

RTI Code Generator

User's Manual

Version 2.5.0



Copyrights

© 2017 Real-Time Innovations, Inc.

All rights reserved.

Printed in U.S.A. First printing.

June 2017.

Trademarks

Real-Time Innovations, RTI, NDDS, RTI Data Distribution Service, DataBus, Connex, Micro DDS, the RTI logo, 1RTI and the phrase, “Your Systems. Working as one,” are registered trademarks, trademarks or service marks of Real-Time Innovations, Inc. All other trademarks belong to their respective owners.

Copy and Use Restrictions

No part of this publication may be reproduced, stored in a retrieval system, or transmitted in any form (including electronic, mechanical, photocopy, and facsimile) without the prior written permission of Real-Time Innovations, Inc. The software described in this document is furnished under and subject to the RTI software license agreement. The software may be used or copied only under the terms of the license agreement.

Technical Support

Real-Time Innovations, Inc.

232 E. Java Drive

Sunnyvale, CA 94089

Phone: (408) 990-7444

Email: support@rti.com

Website: <https://support.rti.com/>

Contents

Chapter 1 Introduction	1
Chapter 2 Paths Mentioned in Documentation	2
Chapter 3 Command-Line Arguments for rtiddsgen	5
Chapter 4 Generated Files	14
Chapter 5 Customizing the Generated Code	18
Chapter 6 Boosting Performance with Server Mode	21

Chapter 1 Introduction

RTI Code Generator creates the code needed to define and register a user data type with **Connex DDS**. Using Code Generator is optional if:

- You are using dynamic types (see Managing Memory for Built-in Types (Section 3.2.7) in the *RTI Connex DDS Core Libraries User's Manual*¹).
- You are using one of the built-in types (see Built-in Data Types (Section 3.2) in the *RTI Connex DDS Core Libraries User's Manual*).

To use Code Generator, you will need to provide a description of your data type(s) in an IDL or XML file. You can define multiple data types in the same type-definition file. For details on these files, see the *RTI Connex DDS Core Libraries User's Manual* (Sections 3.3 and 3.4).

¹This document is provided with Connex DDS. You can also access it from the [RTI Community's Documentation page](#).

Chapter 2 Paths Mentioned in Documentation

The documentation refers to:

- **<NDDSHOME>**

This refers to the installation directory for *Connex DDS*.

The default installation paths are:

- Mac OS X systems:

/Applications/rti_connex_dds-version

- UNIX-based systems, non-*root* user:

/home/your user name/rti_connex_dds-version

- UNIX-based systems, *root* user:

/opt/rti_connex_dds-version

- Windows systems, user without Administrator privileges:

<your home directory>\rti_connex_dds-version

- Windows systems, user with Administrator privileges:

C:\Program Files\rti_connex_dds-version (for 64-bits machines) or

C:\Program Files (x86)\rti_connex_dds-version(for 32-bit machines)

You may also see \$NDDSHOME or %NDDSHOME%, which refers to an environment variable set to the installation path.

Wherever you see <NDDSHOME> used in a path, replace it with your installation path.

Note for Windows Users: When using a command prompt to enter a command that includes the path **C:\Program Files** (or any directory name that has a space), enclose the path in quotation marks. For example:

```
"C:\Program Files\rti_connex_t_dds-version\bin\rtiddsgen"
```

or if you have defined the NDDSHOME environment variable:

```
"%NDDSHOME%\bin\rtiddsgen"
```

- RTI Workspace directory, **rti_workspace**

The RTI Workspace is where all configuration files for the applications and example files are located. All configuration files and examples are copied here the first time you run *RTI Launcher* or any script in **<NDDSHOME>/bin**. The default path to the RTI Workspace directory is:

- Mac OS X systems:

/Users/your user name/rti_workspace

- UNIX-based systems:

/home/your user name/rti_workspace

- Windows systems:

your Windows documents folder\rti_workspace

Note: '*your Windows documents folder*' depends on your version of Windows.

For example, on Windows 7, the folder is **C:\Users\your user name\Documents**; on Windows Server 2003, the folder is **C:\Documents and Settings\your user name\Documents**.

You can specify a different location for the **rti_workspace** directory. See the *RTI Connex_t DDS Core Libraries Getting Started Guide* for instructions.

- **<path to examples>**

Examples are copied into your home directory the first time you run *RTI Launcher* or any script in **<NDDSHOME>/bin**. This document refers to the location of these examples as **<path to examples>**. Wherever you see **<path to examples>**, replace it with the appropriate path.

By default, the examples are copied to **rti_workspace/version/examples**

So the paths are:

- Mac OS X systems:

/Users/your user name/rti_workspace/version/examples

- UNIX-based systems:

/home/your user name/rti_workspace/version/examples

- Windows systems:

***your Windows documents folder*\rti_workspace*version*\examples**

Note: '*your Windows documents folder*' is described above.

You can specify that you do not want the examples copied to the workspace. See the *RTI Connext DDS Core Libraries Getting Started Guide* for instructions.

Chapter 3 Command-Line Arguments for `rtiddsgen`

On Windows systems: Before running `rtiddsgen`, run `VCVARS32.BAT` in the same command prompt that you will use to run `rtiddsgen`. The `VCVARS32.BAT` file is usually located in `<Visual Studio Installation Directory>/VC/bin`. Alternatively, run `rtiddsgen` from the Visual Studio Command Prompt under the Visual Studio Tools folder.

If you are generating code for *Connex DDS*, the options are:

```
rtiddsgen    [-help]
              [-allocateWithMalloc]
              [-alwaysUseStdVector]
              [-autoGenFiles <architecture>]
              [-create <typefiles| examplefiles|makefiles>]
              [-convertToIdl | -convertToXML | -convertToXsd]
              [-D <name>[=<value>]]
              [-d <outdir>]
              [-disableXSDValidation]
              [-dllExportMacroSuffix <suffix>]
              [-enableEscapeChar]
              [-example <architecture>]
              [-express]
              [-I <directory>]
              [[ [-inputIdl] <IDLInputFile.idl> | [-inputXml] <XMLInputFile.xml>
                | [-inputXsd <IDLInputFile.idl>]]]
              [-language <Ada|C|C++|C++03|C++11|C++/CLI|C#|Java>]
              [-namespace]
              [-noCopyable]
              [-notypecode]
              [-obfuscate]
              [-package <packagePrefix>]
              [-platform <architecture>]
              [-ppDisable]
              [-ppPath <path to preprocessor>]
              [-ppOption <option>]
              [-qualifiedEnumerator]
              [-reader]
              [-replace]
```



```

[-sequenceSize <unbounded sequences size>]
[-sharedLib]
[-stl]
[-stringSize <unbounded strings size>]
[-U <name>]
[-unboundedSupport]
[-update <typefiles| examplefiles|makefiles>]
[-use42eAlignment]
[-use52Keyhash]
[-use526Keyhash]
[-use52CKeyhash]
[-use52JavaKeyhash]
[-useStdString]
[-V <name< [=<value>]]
[-verbosity [1-3]]
[-version]
[-writer]

```

If you have *RTI CORBA Compatibility Kit*, you can use the above options, plus these:

```

[-corba [CORBA Client header file]]
[-dataReaderSuffix <suffix> ]
[-dataWriterSuffix <suffix> ]
[-orb <CORBA ORB>]
[-typeSequenceSuffix <suffix> ]

```

If you are generating code for *RTI Connex DDS Micro*, the options are:

```

rtiddsgen    [-help]
              [-create <typefiles| examplefiles|makefiles>]
              [-convertToIdl | -convertToXML]
              [-D <name>[=<value>]]
              [-d <outdir>]
              [-enableEscapeChar]
              [-I <directory>]
              [[ -inputIdl] <IDLInputFile.idl> | [-inputXml] <XMLInputFile.xml>]
              [-language <C|C++>]
              [-micro]
              [-namespace]
              [-ppDisable]
              [-ppPath <path to preprocessor>]
              [-ppOption <option>]
              [-reader]
              [-replace]
              [-sequenceSize <unbounded sequences size>]
              [-stringSize <unbounded strings size>]
              [-U <name>]
              [-update <typefiles| examplefiles|makefiles>]
              [-V <name< [=<value>]]
              [-verbosity [1-3]]
              [-version]
              [-writer]

```

Table 3.1 Options for `rtiddsgen` describes the options.

Table 3.1 Options for rtiddsgen

Option	Description
-allocateWithMalloc	Use this flag to obtain backward-compatibility when allocating optional members with DDS_Heap_malloc in C++.
-alwaysUseStdVector	<p>Only applies if <code>-language <C C++></code> and <code>-stl</code> are also specified.</p> <p>Generates code that maps all sequences to <code>std::vector</code>, even bounded sequences that would otherwise map to <code>rti::core::bounded_sequence</code>.</p> <p>Alternatively, the <code>@use_vector</code> annotation can be applied to each sequence member.</p>
-autoGenFiles <architecture>	<p>Updates the auto-generated files, i.e, the typefiles and makefile/project files.</p> <p>To see the valid options for <architecture> per language, run <code>rtiddsgen</code> with the <code>-help</code> option, or use the string "universal" (<code>-autoGenFiles universal</code>) to generate compatible publisher/subscriber code for all supported platforms. The universal architecture will not generate makefiles/project files.</p> <p>This is a shortcut for:</p> <p style="text-align: center;"><code>-update typefiles -update makefiles -platform <architecture></code></p>
-create <typefiles examplefiles makefiles>	<p>Creates the files indicated (typefiles, examplefiles, or makefiles) if they do not exist.</p> <p>If the files already exist, the files are not modified and a warning is printed.</p> <p>There can be multiple <code>-create</code> options.</p> <p>If both <code>-create</code> and <code>-update</code> are specified for the same file type, only <code>-update</code> will be applied.</p>
-convertToIdl	Converts the input type description file into IDL format. This option creates a new file with the same name as the input file and a <code>.idl</code> extension.
-convertToXML	Converts the input type description file into XML format. This option creates a new file with the same name as the input file and a <code>.xml</code> extension.
-convertToXsd	Converts the input type description file into XSD format. This option creates a new file with the same name as the input file and a <code>.xsd</code> extension.
-corba [CORBA Client header file]	This option is only available when using the <i>RTI CORBA Compatibility Kit for Connex DDS</i> (available for purchase as a separate product and described in the <i>RTI Connex DDS Core Libraries User's Manual</i>).
-D <name>[=<value>]	<p>Defines preprocessor macros.</p> <p>On Windows systems, enclose the argument in quotation marks:</p> <p><code>-D "<name>[=<value>]"</code></p>
-d <outdir>	Generates the output in the specified directory. By default, Code Generator will generate files in the directory where the input type-definition file is found.

Table 3.1 Options for rtiddsgen

Option	Description
<code>-dataReaderSuffix <suffix></code>	<p>Only applies if <code>-corba [CORBA Client header file]</code> is also specified.</p> <p>Assigns a suffix to the name of a <i>DataReader</i> interface.</p> <p>By default, the suffix is DataReader. Therefore, given the type Foo, the name of the <i>DataReader</i> interface will be FooDataReader.</p>
<code>-dataWriterSuffix <suffix></code>	<p>Only applies if <code>-corba [CORBA Client header file]</code> is also specified.</p> <p>Assigns a suffix to the name of a <i>DataWriter</i> interface. By default, the suffix is DataWriter. Therefore, given the type Foo, the name of the <i>DataWriter</i> interface will be FooDataWriter.</p>
<code>-disableXSDValidation</code>	<p>Causes Code Generator not to check that the input XSD file is well-formed.</p> <p>The use of <i>this option</i> is <i>not recommended</i> in general, as Code Generator may receive invalid inputs.</p>
<code>-dllExportMacroSuffix <suffix></code>	<p>Defines the suffix of the macro that is used to export symbols when building Windows DLLs. The default macro is <code>NDDS_USER_DLL_EXPORT</code>. When this option is specified, the name of the macro is <code>NDDS_USER_DLL_EXPORT_<Suffix></code>.</p>
<code>-enableEscapeChar</code>	<p>Enables use of the escape character '_' in IDL identifiers.</p>
<code>-example <architecture></code>	<p>Generates type files, example files, and a makefile.</p> <p>This is a shortcut for:</p> <pre><code>-create typefiles -create examplefiles -create makefiles -platform <architecture></code></pre> <p>To see the valid options for <code><architecture></code> per language, run <i>rtiddsgen</i> with the -help option, or use the string "universal" (-example universal) to generate compatible publisher/subscriber code for all supported platforms. The universal architecture will not generate makefiles/project files.</p>
<code>-express</code>	<p>Generates the C# project files needed to build with Microsoft Visual Studio Express.</p> <p>This option is only compatible with architecture <code>i86Win32VS2010</code>. Newer versions of Microsoft Visual Studio Express Edition do not need this flag.</p>
<code>-I <directory></code>	<p>Adds to the list of directories to be searched for type-definition files (IDL or XML files). Note: A type-definition file in one format cannot include a file in another format.</p>
<code>-inputIdl</code>	<p>Indicates that the input file is an IDL file, regardless of the file extension.</p>
<code>-inputXml</code>	<p>Indicates that the input file is an XML file, regardless of the file extension.</p>
<code>-inputXsd</code>	<p>Indicates that the input file is an XSD file, regardless of the file extension.</p>
IDLInputFile.idl	<p>A file containing IDL descriptions of your data types. If <code>-inputIdl</code> is not used, the file must have a .idl extension.</p>

Table 3.1 Options for rtidsgen

Option	Description
-help	Prints out the command-line options for <i>rtidsgen</i> .
For <i>Connex DDS Core</i> : -language <Ada C C++ C++03 C++11 C++/CLI C# Java> For <i>Connex DDS Micro</i> : -language <C C++>	Specifies the language to use for the generated files. The default language is C++.
-metp	Generates code for the Multi-Encapsulation Type Support (METP) library. The METP library requires a special version of <i>RTI Connex DDS DDS Core</i> ; please contact support@rti.com for more information.
-micro	Generates code and support files for <i>Connex DDS Micro</i> , instead of <i>Connex DDS Professional</i> . Use -micro -help to list the options supported by Code Generator when targeting <i>RTI Connex DDS Micro</i> .
-namespace	Specifies the use of C++ namespaces. (For C++ only. For C++/CLI and C#, it is implied—namespaces are always used.)
-noCopyable	Forces Code Generator to put ‘copy’ logic into the corresponding TypeSupport class, rather than the type itself. This option is only used for Java code generation.
-notypecode	Disables type-code support. If you are using a large data type (more than 64 K) <i>and</i> type-code support, you will see a warning when type-code information is sent. Code Generator has a type-code size limit of 64K. To avoid the warning when working with data types with type codes larger than 64K, turn off type-code support by using -notypecode . Type-code support must be enabled if you are going to use ContentFilteredTopics with the default SQL filter.
-obfuscate	Generates an obfuscated IDL file from the input file. Note that even if the input type is XML, this option generates an obfuscated IDL file.
-orb <CORBA ORB>	Only applies if -corba [CORBA Client header file] is also specified. Specifies the CORBA ORB. The majority of generated code is independent of the ORB. However, for some IDL features, the generated code depends on the ORB. Code Generator generates code compatible with ACE-TAO or JacORB. To select an ACE_TAO version, use the -orb option. The default is ACE_TAO1.6.
-package <packagePrefix>	Specifies the root package into which generated classes will be placed. It applies to Java only. If the type-definition file contains module declarations, those modules will be considered subpackages of the package specified here.

Table 3.1 Options for rtiddsgen

Option	Description
<code>-platform <architecture></code>	<p>Required if <code>-create makefiles</code> or <code>-update makefiles</code> is used.</p> <p>To see the valid options for <code><architecture></code> per language, run <code>rtiddsgen</code> with the <code>-help</code> option, or use the string "universal" (<code>-platform universal</code>) to generate compatible publisher/subscriber code for all supported platforms. The universal architecture will not generate makefiles/project files.</p>
<code>-ppDisable</code>	Disables the preprocessor.
<code>-ppOption <option></code>	Specifies a preprocessor option. This option can be used multiple times to provide the command-line options for the specified preprocessor. See <code>-ppPath <path to preprocessor></code> .
<code>-ppPath <path to preprocessor></code>	<p>Specifies the preprocessor. If you only specify the name of an executable (not a complete path to that executable), the executable must be found in your Path. The default value is <code>cpp</code> for non-Windows architectures and <code>cl.exe</code> for Windows architectures.</p> <p>If you use <code>-ppPath</code> to provide the full path and filename for <code>cl.exe</code> or the <code>cpp</code> preprocessor, you must also use <code>-ppOption <option></code> to set the following preprocessor options:</p> <p>If you use a non-default path for <code>cl.exe</code>, you also need to set:</p> <pre data-bbox="568 945 1242 976">-ppOption /nologo -ppOption /C -ppOption /E -ppOption /X</pre> <p>If you use a non-default path for <code>cpp</code>, you also need to set:</p> <pre data-bbox="568 1060 722 1092">-ppOption -C</pre>
<code>-qualifiedEnumerator</code>	Uses the fully qualified name for enumerator values including the enum value.
<code>-reader</code>	Generates support for a DataReader (only with <code>-micro</code>).
<code>-replace</code>	<p>Deprecated option. Instead, use <code>-update <typefiles examplefiles makefiles></code> for the proper files (typefiles, examplefiles, makefiles).</p> <p>This option is maintained for backwards compatibility. It allows Code Generator to overwrite any existing generated files.</p> <p>If it is not present and existing files are found, Code Generator will print a warning but will not overwrite them.</p>
<code>-sequenceSize</code> <code><unbounded sequences size></code>	Sets the size assigned to unbounded sequences. The default value is 100 elements.
<code>-sharedLib</code>	Generates makefiles that compile with the Connex DDS shared libraries (by default, the makefile will link with the static libraries)

Table 3.1 Options for rtiddsgen

Option	Description
-stl	<p>Only applies if <code>-language C+03</code> or <code>-language C+11</code> is also specified.</p> <p>Generates code with an enhanced mapping:</p> <ul style="list-style-type: none"> • Unbounded sequences map to <code>std::vector</code> (also requires <code>-unboundedSupport</code>) • Bounded sequences map to <code>rti::core::bounded_sequence</code> (or <code>std::vector</code> if <code>-alwaysUseStdVector</code> is specified) • Strings map to <code>std::string</code>, wide strings map to <code>std::wstring</code>, wide characters map to <code>wchar_t</code>. • Members annotated with <code>@external</code> and pointers map to <code>dds::core::external</code>. <p>The default behavior when this option is not specified is to map to non-standard Connex DDS-specific types.</p>
-stringSize <unbounded strings size>	Sets the size assigned to unbounded strings, not counting a terminating NULL character. The default value is 255 bytes.
-typeSequenceSuffix <suffix>	<p>This option can only be used with the <code>-corba [CORBA Client header file]</code> option.</p> <p>Assigns a suffix to the names of the implicit sequences defined for IDL types. By default, the suffix is <code>Seq</code>. Therefore, given the type 'Foo' the name of the implicit sequence will be <code>FooSeq</code>.</p>
-U <name>	Cancels any previous definition of <name>.
-unboundedSupport	<p>Generates code that supports unbounded sequences and strings. This option is not supported in Ada. When the option is used, the command-line options <code>-sequenceSize</code> and <code>-stringSize</code> are ignored.</p> <p>This option also affects the way unbounded sequences are deserialized. When a sequence is being received into a sample from the <i>DataReader's</i> cache, the old memory for the sequence will be deallocated and memory of sufficient size to hold the deserialized data will be allocated. When initially constructed, sequences will not preallocate any elements having a maximum of zero elements.</p> <p>For more information on using the <code>-unboundedSupport</code>, including some required QoS settings, see these sections in the <i>RTI Connex DDS Core Libraries User's Manual</i>:</p> <ul style="list-style-type: none"> • Section 20.1.3, Writer-Side Memory Management when Using Java • Section 20.2.2, Reader-Side Memory Management when Using Java

Table 3.1 Options for rtiddsgen

Option	Description
-update <typefiles examplefiles makefiles>	<p>Creates the files indicated if they do not exist.</p> <p>Is the files already exist, this overwrites the files without printing a warning.</p> <p>There can be multiple -update options.</p> <p>If both -create and -update are specified for the same file type, only the -update will be applied.</p>
-use42eAlignment	<p>Makes the generated code compatible with <i>RTI Data Distribution Service 4.2e</i>. This option should be used when compatibility with 4.2e is required and the topic data types contain double, long long, unsigned long long, or long double members.</p> <p>Using this option also requires setting the following properties to "1" in the <i>DataWriter</i> and <i>DataReader</i> QoS:</p> <ul style="list-style-type: none"> • <i>DataWriter</i> QoS: dds.data_writer.type_support.use_42e_alignment • <i>DataReader</i> QoS: dds.data_reader.type_support.use_42e_alignment
-use52Keyhash	<p>This option should be used when compatibility with 5.2.3 and earlier General Access Releases (GARs) is required when using keyed mutable types (related to RTI Issue IDs CODEGENII-501 and CODEGENII-693).</p>
-use526Keyhash	<p>This option should be used when compatibility with 5.2.6 is required when using keyed mutable types (related to RTI Issue ID CODEGENII-693).</p>
-use52CKeyhash	<p>This option should be used when generating Java and .NET code for keyed mutable types in order to have keyhash generation that is compatible with C/C+/C03/C+11.</p>
-use52JavaKeyhash	<p>This option should be used when compatibility with 5.2 and earlier is required in Java and .NET applications when using keyed mutable types.</p>
-useStdString	<p>Use 'std::string' instead of 'char *' when generating code for IDL strings when the language option is C++.</p> <p>Using this option will automatically enable constructor generation. Therefore you can use this option with or without -constructor and achieve the same result.</p>
-V <name> [=<value>]	<p>Defines a user variable that can be used in the templates as \$userVarList.name or \$userVarList.name.equals(value). The variables defined with this option are case sensitive.</p>
-verbosity [1-3]	<p>Sets the Code Generator verbosity:</p> <ol style="list-style-type: none"> 1: Exceptions 2: Exceptions and warnings 3: Exceptions, warnings and information (Default)
-version	<p>Displays the version of Code Generator being used, such as 2.x.y, as well as the version of the templates being used (xxxx-xxxx-xxxx).</p>

Table 3.1 Options for rtiddsgen

Option	Description
-writer	Generates support for a <i>DataWriter</i> (only with -micro).
XMLInputFile.xml	A file containing XML descriptions of your data types. If -inputXml is not used, the file must have an .xml extension.

Note: Before using a makefile created by Code Generator to compile an application, make sure the `#{NDDSHOME}` environment variable is set as described in the *RTI Connexx DDS Core Libraries Getting Started Guide*.

Chapter 4 Generated Files

The following tables show the files that Code Generator creates for an example IDL file called **Hello.idl**.

- [Table 4.1 C, C++, C++/CLI, C# Files Created for Example “Hello.idl”](#)
- [Table 4.2 Java Files Created for Example “Hello.idl”](#)
- [Table 4.3 Ada Files Created for Example “Hello.idl”](#)

Table 4.1 C, C++, C++/CLI, C# Files Created for Example “Hello.idl”

Generated Files	Description
<p>The following files are required for the user data type. The source files should be compiled and linked with your application. The header files are required to use the data type in source.</p> <p>You should not modify these files unless you intend to customize the generated code supporting your type.</p>	
<p>Hello.[c, cxx, cpp] HelloSupport.[c, cxx, cpp] HelloPlugin.[c, cxx, cpp]</p>	<p>Generated code for the data types. These files contain the implementation for your data types.</p>
<p>Hello.h HelloSupport.h HelloPlugin.h</p>	<p>Header files that contain declarations used in the implementation of your data types.</p>
<p>The following optional files are generated when you use the -example <i><architecture></i> command-line option. You may modify and use these files as a way to create simple applications that publish or subscribe to the user data type.</p>	
<p>Hello_publisher.[c, cxx, cpp, cs]</p>	<p>Example code for an application that publishes the user data type. This example shows the basic steps to create all of the DDS objects needed to send data.</p> <p>You will need to modify the code to set and change the values being sent in the data structure. Otherwise, just compile and run.</p>

Table 4.1 C, C++, C++/CLI, C# Files Created for Example “Hello.idl”

Generated Files	Description
Hello_subscriber.[c, cxx, cpp,cs]	Example code for an application that subscribes to the user data type. This example shows the basic steps to create all of the DDS objects needed to receive data using a “listener” function. No modification of this file is required. It is ready for you to compile and run.
Hello.sln, Hello_publisher.v[c, cs, cx]proj, Hello_subscriber.v[c, cs, cx]proj	Microsoft Visual Studio solution and project files, generated only for Visual Studio-based architectures. To compile the generated source code, open the workspace file and build the two projects.
makefile_Hello_<architecture>	Makefile for non-Visual-Studios-based architectures. An example <architecture> is i86Linux2.6gcc4.4.5.

Table 4.2 Java Files Created for Example “Hello.idl”

Data Type	Generated Files	Description
Since the Java language requires individual files to be created for each class, Code Generator will generate a source file for every IDL construct that translates into a class in Java.		
Constants	Hello.java	Class associated with the constant
Enums	Hello.java	Class associated with enum type
Structures/Unions	Hello.java	Structure/Union class
	HelloSeq.java	Sequence class
	HelloDataReader.java	DDS <i>DataReader</i> and <i>DataWriter</i> classes
	HelloDataWriter.java	
	HelloTypeSupport.java	Support (serialize, deserialize, etc.) class
Typedef of sequences or arrays	Hello.java	Wrapper class
	HelloSeq.java	Sequence class
	HelloTypeSupport.java	Support (serialize, deserialize, etc.) class
The following optional files are generated when you use the -example <architecture> command-line option. You may modify and use these files as a way to create simple applications that publish or subscribe to the user data type.		

Table 4.2 Java Files Created for Example “Hello.idl”

Data Type	Generated Files	Description
Structures/Unions	HelloPublisher.java HelloSubscriber.java	Example code for applications that publish or subscribe to the user data type. You should modify the code in the publisher application to set and change the value of the published data. Otherwise, both files should be ready to compile and run.
	makefile_Hello_ <architecture>	Makefile for non-Windows-based architectures. An example <architecture> is i86Linux2.6gcc4.4.5jdk.
Structures/Unions/ Typedefs/Enums	HelloTypeCode.java (Note: this is <i>not</i> generated if you use -notypecode)	Type code class associated with the IDL type, Hello

Table 4.3 Ada Files Created for Example “Hello.idl”

Generated Files	Description
Hello[.h,.c]	Generated code for the data types, which contain the implementation for the data types, and header files that contain declarations used in the implementation of the data types.
HelloSupport[.h,.c]	
HelloPlugin[.h,.c]	
hello_idl_file[.adb,.ads]	
hello_idl_file-hello_datawriter.ads	DataReader and DataWriter classes and serialize/deserialize methods.
hello_idl_file-hello_datareader.ads	
hello_idl_file-hello_typesupport [.adb,.ads]	
hello_idl_file-hello_publisher [.adb,.ads] (in the samples/ directory)	Example code for an application that publishes the user data type. You will need to modify the code to set and change the values being sent in the data structure. Otherwise, just compile and run. The subscriberlistener file implements the on_data_available() callback.
hello_idl_file-hello_subscriber [.adb,.ads] (in the samples/ directory)	
hello_idl_file-hello_subscriberlistener [.adb,.ads] (in the samples/ directory)	

Table 4.3 Ada Files Created for Example “Hello.idl”

Generated Files	Description
hello.gpr	Project files using Ada-like syntax. These files define the build-related characteristics of the application. These characteristics include the list of sources, the location of those sources, the location of the generated object files, the name of the main program, and the options for the various tools involved in the build process. Each of them is for a different set of files (hello-samples is for the examples, hello_c is for the c files and hello is for rest of the ada files.)
hello_c.gpr	
hello-samples.gpr (in the samples directory)	

Chapter 5 Customizing the Generated Code

Code Generator allows you to customize the generated code for different languages by changing the provided templates. This version does not allow you to create new output files.

You can load new templates using the following command in an existing template, where `<pathToTemplate>` is relative to the `<NDDSHOME>/resource/app/app_support/rtiddsgen/templates` folder:

```
#parse("<pathToTemplate>/template.vm")
```

If that `template.vm` file contains macros, you can use it within the original template. If `template.vm` contains just plain text without macros, that text will be included directly in the original file.

You can customize the behavior of a template by using the predefined set of variables provided with Code Generator. For more information, see the tables in `RTI_rtiddsgen_template_variables.xlsx`.

This file contains two different sheets: Language-Templates and Template variables. The Language-Template sheet shows the correspondence between the Velocity Templates used and the generated files for each language. If, for example, we want to add a method in C in the `Hello.c` file, we would need to modify the template `typeBody.vm` under the `templates/c` directory.

The scope of a template can be:

- **type:** If we generate a file with that template for each type in the IDL file. For example in Java, where we generate a `TypeSupport` file for each type in the IDL.
- **file:** If we generate a file with that template for each IDL file. For example in C, we generate a single plugin file containing all the types `Plugin` information.

- **lastTopLevelType**: If we generate a file with that template for the last top-level type in the IDL file. This is commonly used for the publisher/subscriber examples.
- **module**: If we generate a file with that template for each module in the IDL file. This is used in Ada, where there are files that contain all the types of a module.
- **topLevelType**: if we generate a file with that template for each type in the idl file. This is used in ADA where the publisher/subscriber files are only generated for top level types

The table also shows the `top_level` variables that can be used for that templates. These variables are explained in the sheet Template variables. For example in Java, the main unit of variables are the `constructMap` which is a `HashMap` of variables that represent a type. In C, we will have as the main unit the `constructMapList`, which is a `List` of `constructMap`. In the Template variables sheet, we can see which variables are contained in each `constructMap`, the `constructKind` or type that it is applicable to and the value that it contains depending on the language we use.

One important variable that contains the `constructMap` for a type is the `memberFieldMapList`. This list represent the members contained within the type. Each member is also represented as a `HashMap` whose variables are also described in the Template variables sheet.

Apart from that there are environmental or general variables that are not related with the types that are defined within a `HashMap` called `envMap`.

Let's see how to use these variables with an example. Suppose we want to generate a method in C that prints the members for a structure and, if it is an array or sequence, its corresponding size. For this IDL:

```
module Mymodule{
    struct MyStruct{
        long longMember;
        long arrayMember [2][100];
        sequence<char,2> sequenceMember;
        sequence <long, 5> arrayOfSequenceMember[28];
    };
};
```

We want to generate this:

```
void MyModule_MyStruct_specialPrint(){
    printf(" longMember  \n");
    printf(" arrayMember  is an array  [2, 100]  \n ");
    printf(" sequenceMember  is a sequence <2> \n");
    printf(" arrayOfSequenceMember  is an array  [28]  is a sequence <5> ");
}
```

The code in the template would look like this:

```
## We go through all the list of types
##foreach ($node in $constructMapList)
##We only want the method for structs
##--*##if ($node.constructKind.equals("struct"))
void ${node.nativeFQName}_specialPrint(){
```

```
##We go through all the members and call to the macros that check if they are array or
sequences
#*----*##foreach($member in $node.memberFieldMapList)
print("$member.name #isArray($member) #isASeq($member) \n");
#*----*##end
}
#*--*##end
#end
```

The **isArray** macro checks if the member is an array (i.e, has the variable **dimensionList**) and in that case, prints it:

```
#macro (isArray $member)
#if($member.dimensionList) is an array $member.dimensionList #end
#end
```

The **isASeq** macro checks if the member is a sequence (i.e, has the variable **seqSize**) and in that case, prints it:

```
#macro (isASeq $member)
#if($member.seqSize) is a sequence <$member.seqSize> #end
#end
```

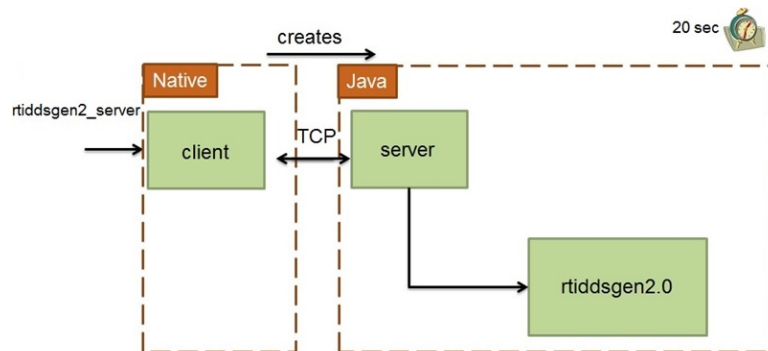
You can add new variables to the templates using the `-V <name> [=<value>]` command-line option when starting Code Generator. This variable will be added to the `userVarList` hashMap. You can refer to it in the template as `$userVarList.name` or `$userVarList.name.equals(value)`.

For more information on velocity templates, see <http://velocity.apache.org/engine/releases/velocity-1.5/user-guide.html>.

Chapter 6 Boosting Performance with Server Mode

If you need to invoke Code Generator multiple times with different parameters and/or type files, there will be a performance penalty derived from loading the JVM and compiling the velocity templates.

To help with the above scenario, you can run Code Generator in server mode. Server mode runs a native executable that opens a TCP connection to a server instance of the code generator that is spawned the first time the executable is run, as depicted below:



When Code Generator is used in server mode, JVM is loaded a single time when the server is started; the velocity templates are also compiled a single time.

To invoke Code Generator in server mode, use the script **rtiddsgen_server(.bat)**, which is in the **scripts** directory.

The Code Generator server will automatically stop if it is not used for a certain amount of time. The default value is 20 seconds; you can change this by editing the **rtiddsgen_server** script and adjusting the value of the parameter, **-n_servertimeout**.