

RTI Monitor

User's Manual

Version 5.3.1



Your systems. Working as one.



© 2010-2018 Real-Time Innovations, Inc.

All rights reserved.

Printed in U.S.A. First printing.

February 2018.

Trademarks

Real-Time Innovations, RTI, NDDS, RTI Data Distribution Service, DataBus, Connex, Micro DDS, the RTI logo, 1RTI and the phrase, “Your Systems. Working as one,” are registered trademarks, trademarks or service marks of Real-Time Innovations, Inc. All other trademarks belong to their respective owners.

Copy and Use Restrictions

No part of this publication may be reproduced, stored in a retrieval system, or transmitted in any form (including electronic, mechanical, photocopy, and facsimile) without the prior written permission of Real-Time Innovations, Inc. The software described in this document is furnished under and subject to the RTI software license agreement. The software may be used or copied only under the terms of the license agreement.

Technical Support

Real-Time Innovations, Inc.

232 E. Java Drive

Sunnyvale, CA 94089

Phone: (408) 990-7444

Email: support@rti.com

Website: <https://support.rti.com/>

Contents

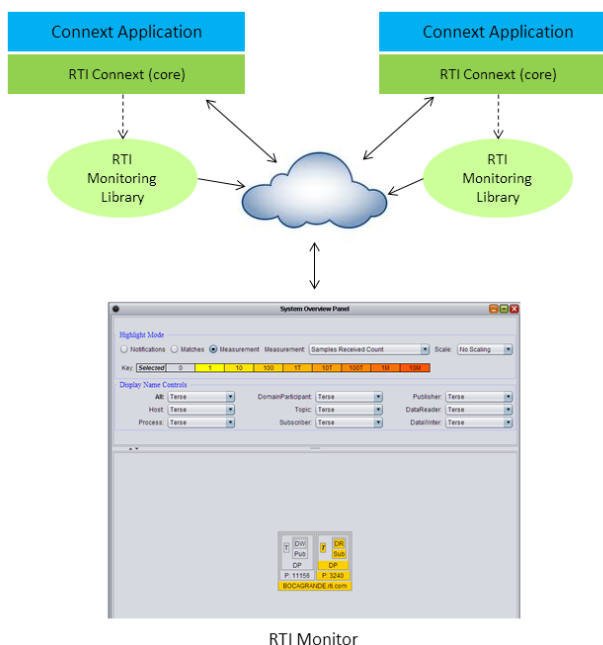
| | | |
|----------|---|------------|
| 1 | Welcome | 1-1 |
| 1.1 | Paths Mentioned in Documentation..... | 1-2 |
| 2 | Starting Monitor | 2-1 |
| 2.1 | Command-line Options..... | 2-1 |
| 3 | Using Monitor | 3-1 |
| 3.1 | Tree Views | 3-1 |
| 3.2 | Working with Monitor's Panels | 3-3 |
| 3.3 | Entity-Specific Panels..... | 3-4 |
| 3.3.1 | Status Panel | 3-5 |
| 3.3.2 | Chart Panel | 3-6 |
| 3.3.3 | Description Panel | 3-6 |
| 3.3.4 | Notifications Panel | 3-9 |
| 3.3.5 | Distributed Logger Panel | 3-11 |
| 3.4 | System-Wide Panels and Tables | 3-14 |
| 3.4.1 | System Overview Panel | 3-14 |
| 3.4.2 | All Notifications Table | 3-17 |
| 3.4.3 | System Types Table | 3-18 |
| 3.4.4 | Processes Table | 3-18 |
| 3.5 | Joining and Leaving Domains | 3-18 |
| 3.6 | Saving and Loading Data | 3-19 |
| 3.7 | Connecting and Disconnecting the Display | 3-19 |
| 3.8 | Changing Transport Settings in the Configuration File | 3-20 |

Chapter 1 Welcome

RTI® Monitor is a graphical tool that displays monitoring data from *RTI Connex® DDS* applications.

Monitor will help you:

- **Understand your system** with an easy-to-use graphical view into your entire *Connex* DDS application.
- **Verify your design** by making sure the entities in your *Connex* DDS applications are communicating as expected.
- **Tune performance** by providing deep statistics on every aspect of the middleware's operation.
- **Optimize integration** with detailed information on every entity in your system.
- **Monitor real-time operation** with a dashboard of tools to see traffic patterns, errors, lost samples, and more.



You can run *Monitor* on the same host as the *Connex* DDS application or on a different host.

To enable a *Connexit DDS* application to provide monitoring data to *Monitor*, the application needs to use the *RTI Monitoring Library* plug-in included with *Connexit DDS*.

Monitoring is enabled in the application by setting values in the DomainParticipant's PropertyQosPolicy (programmatically or through an XML QoS profile). See the *Monitoring Library* section of the *RTI Connext DDS Core Libraries User's Manual*.

Connex DDS notifies *Monitoring Library* every time an entity is created/deleted or a QoS is changed. *Monitoring Library* also periodically queries the status of all entities. *Monitoring Library* sends all the data to *Monitor* once it gets the data from the *Connex* DDS application.

1.1 Paths Mentioned in Documentation

The documentation refers to:

- **<NDDSHOME>**

This refers to the installation directory for *Connexrt DDS*.

The default installation paths are:

- Mac OS X systems:
/Applications/rti_connexrt_dds-version
- UNIX-based systems, non-*root* user:
/home/your user name/rti_connexrt_dds-version
- UNIX-based systems, *root* user:
/opt/rti_connexrt_dds-version
- Windows systems, user without Administrator privileges:
<your home directory>\rti_connexrt_dds-version
- Windows systems, user with Administrator privileges:
C:\Program Files\rti_connexrt_dds-version

You may also see \$NDDSHOME or %NDDSHOME%, which refers to an environment variable set to the installation path.

Wherever you see <NDDSHOME> used in a path, replace it with your installation path.

Note for Windows Users: When using a command prompt to enter a command that includes the path **C:\Program Files** (or any directory name that has a space), enclose the path in quotation marks. For example:

```
"C:\Program Files\rti_connexrt_dds-version\bin\rtiddsgen"
```

or if you have defined the NDDSHOME environment variable:

```
"%NDDSHOME%\bin\rtiddsgen"
```

- **<path to examples>**

Examples are copied into your home directory the first time you run *RTI Launcher* or any script in **<NDDSHOME>/bin**. This document refers to the location of these examples as **<path to examples>**.

Wherever you see <path to examples>, replace it with the appropriate path.

By default, the examples are copied here:

- Mac OS X systems:
/Users/your user name/rti_workspace/version/examples
- UNIX-based systems:
/home/your user name/rti_workspace/version/examples
- Windows systems:
<your home directory>\rti_workspace\version\examples

You can specify a different location for the **rti_workspace** directory. You can also specify that you do not want the examples copied to the workspace. See the *RTI Connex DDS Core Libraries Getting Started Guide*.

Chapter 2 Starting Monitor

There are two ways to start *Monitor*:

- From *RTI Launcher*'s Tools tab, click on the Monitor icon.
- From a command prompt:
 - On UNIX-based systems

```
cd <NDDSHOME>/bin
./rtmonitor
```

- On Windows systems

```
cd <NDDSHOME>\bin
rtmonitor
```

Command-line options are described in [Section 2.1](#).

2.1 Command-line Options

Monitor accepts the command-line options in [Table 2.1](#).

Table 2.1 Command-line Options

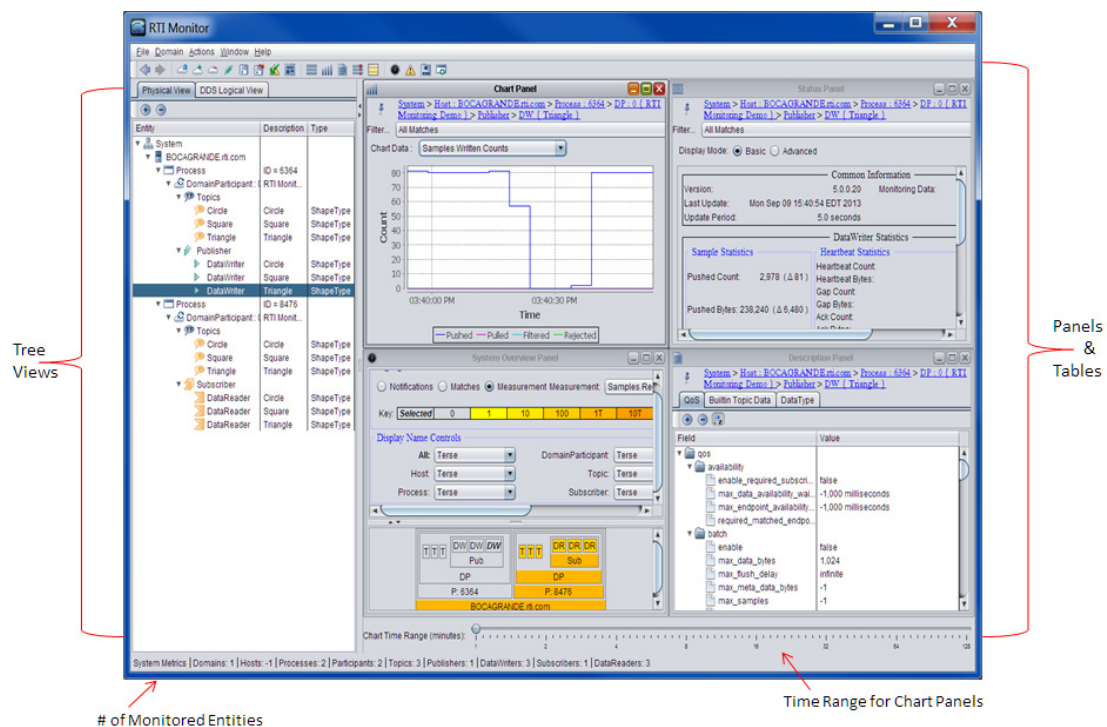
| Option | Description |
|-------------------------------------|--|
| -aggregationPeriodSeconds <seconds> | <i>Monitor</i> periodically goes through all the monitored entities in the system (this information is saved in its own database) to calculate aggregated statistics and states. This value controls that minimum period (specified in seconds). Default: 5 seconds |
| -help | Displays all command-line options. |
| -historyDepth <value> | <i>Monitor</i> saves some statistics' history, so it can be displayed in the charts. This option controls how much historical data (number of samples) is saved per monitoring topic. Default: 12 samples |
| -ignoreTypeConflicts | Instructs <i>Monitor</i> to ignore any type conflicts. In <i>Monitor</i> , type conflicts are based on type-code equality rather than type compatibility. This command-line option can be useful if you have types that have different type-codes but are compatible. Default: Not specified (do not ignore type conflicts) |

Table 2.1 Command-line Options

| Option | Description |
|---|---|
| <code>-initialDomainIds <domain_id_list></code> | Specifies which domains <i>Monitor</i> will join when it starts up. <domain_id_list> is a list of domain IDs, each separated by a comma. To specify multiple domain IDs on a Windows system , enclose the comma-separated IDs in quotation marks. For example: -initialDomainIds "31, 32" . Default: If not specified, you will be prompted to enter a domain ID when <i>Monitor</i> starts. |
| <code>-matchRefreshPeriodSeconds <seconds></code> | Specifies the period at which to refresh the system overview panel's matches. Default: 5 seconds |
| <code>-notificationHistoryDepth <value></code> | Specifies the number of notifications to keep per entity. Default: 12 notifications |
| <code>-pruneDeadObjectsPeriodSeconds <seconds></code> | Sets the period at which <i>Monitor</i> should clean up user-interface objects (such as the Host, and Process nodes in the tree views) that are no longer current (have no more children nodes in the tree view). This value should be increased when dealing with very large systems where the time to complete discovery is longer than the default value of 3 seconds. Default: 3 seconds |
| <code>-spawnReadThreads</code> | Instructs <i>Monitor</i> to use multiple threads (according to the number of cores on the host) to retrieve data from its <i>Connex</i> DDS DataReaders (which contain monitoring data). This is typically only needed for very large systems. Default: Not specified (use a single read thread to retrieve data at a period of 1 second) |
| <code>-verbosity <value></code> | Sets the verbosity for <i>Monitor</i> and <i>Connex</i> DDS. 0: silent (both <i>Connex</i> DDS and <i>Monitor</i>) 1: errors (both <i>Connex</i> DDS and <i>Monitor</i>) 2: warnings (<i>Monitor</i> only) 3: warnings (both <i>Connex</i> DDS and <i>Monitor</i>) 4: information (<i>Monitor</i> only) 5: tracing (<i>Monitor</i> only) 6: tracing (both <i>Connex</i> DDS and <i>Monitor</i>) Default: 1 |

Chapter 3 Using Monitor

Monitor consists primarily of tree views and panels. There is also a toolbar for easy access to the most commonly used commands. This chapter provides more details on *Monitor*'s components.



3.1 Tree Views

There are two tree views on the left:

- The **Physical View** displays all entities, arranged by their physical containment.
- The **DDS Logical View** displays all the entities, arranged by domains and topics.

When you select an entity in one of the panels, it becomes selected in the tree.


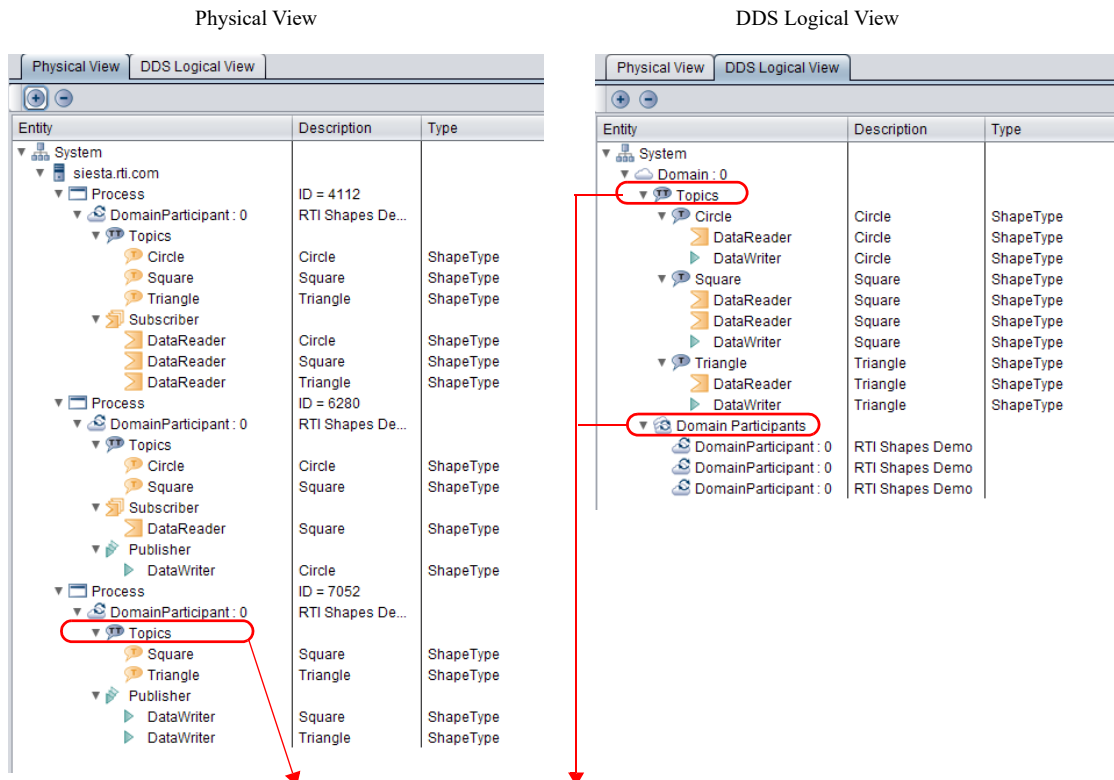

Similarly, when you select an entity in a tree, any entity-specific panels are updated to display information for the newly selected entity. One exception to this is if you use the **pin** button  in the upper-left cor-

Figure 3.1 Physical and DDS Logical Views



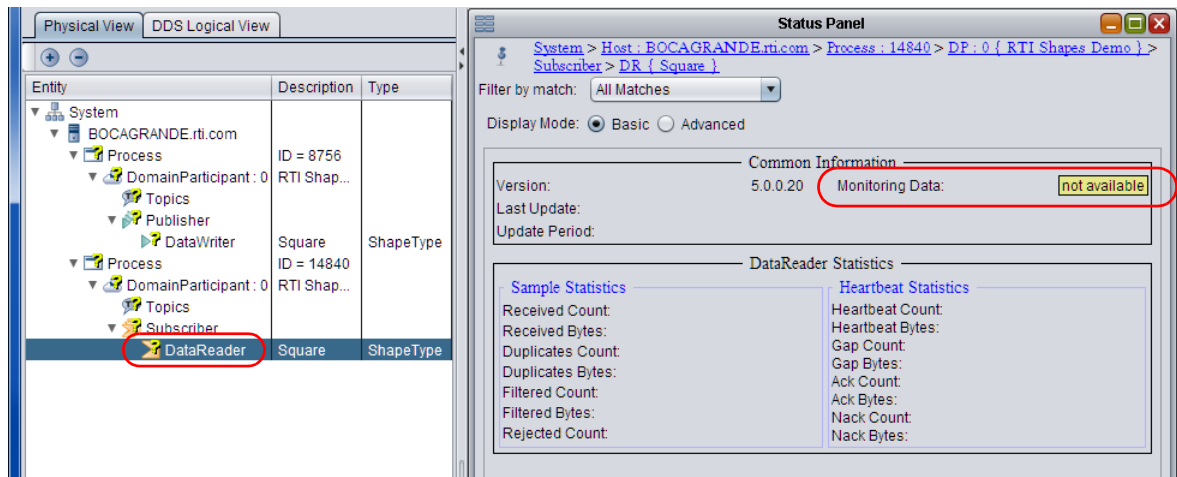
Note: "Topics" and "DomainParticipants" appear strictly to help organize the tree; they are not entities. If you select either of these while viewing an unpinned entity-specific panel, Monitor behaves as if you selected the domain or DomainParticipant above it in the tree.

ner of the panel. When a panel is pinned to an entity, it will periodically receive updated data for the pinned entity—even when another entity is selected in the tree.

Note: You may see a yellow question mark icon  on entities in the tree views:

- The question mark always appears on DomainParticipants and the 'Topics' under them that are created with the *Monitoring Library* option `rti.monitor.config.new_participant_domain_id`. These DomainParticipants are created solely to publish monitoring topic data; they do not publish monitoring data about themselves.

- For other types of entities, the question mark means monitoring data is not available. For information on enabling *Monitoring Library* in a *Connex DDS* application, see the *RTI Connex DDS Core Libraries User's Manual*.



3.2 Working with Monitor's Panels

Monitor has several panels that display monitoring data in graphical and tabular form. Some panels show data for a specific selected entity, while others show system-wide information:

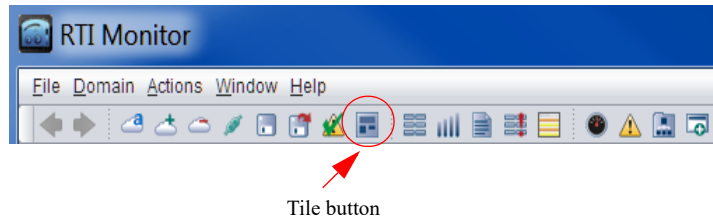
- Entity-Specific Panels
 - Status Panel (Section 3.3.1)
 - Chart Panel (Section 3.3.2)
 - Description Panel (Section 3.3.3)
 - Notifications Panel (Section 3.3.4)
 - Distributed Logger Panel (Section 3.3.5)
- System-wide Panels and Tables
 - System Overview Panel (Section 3.4.1)
 - All Notifications Table (Section 3.4.2)
 - System Types Table (Section 3.4.3)
 - Processes Table (Section 3.4.4)

You can create these panels by:


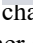
- Using the **Window, Create Panel** option from the menu
- Right-clicking an entity and selecting from the pop-up menu (entity-specific panels only)
- Clicking a button on the toolbar



You may have multiple panels of each type open at the same time.

Panels can be arranged by various options in the **Window** menu. There is also a **Tile** button in the toolbar.



3.3 Entity-Specific Panels

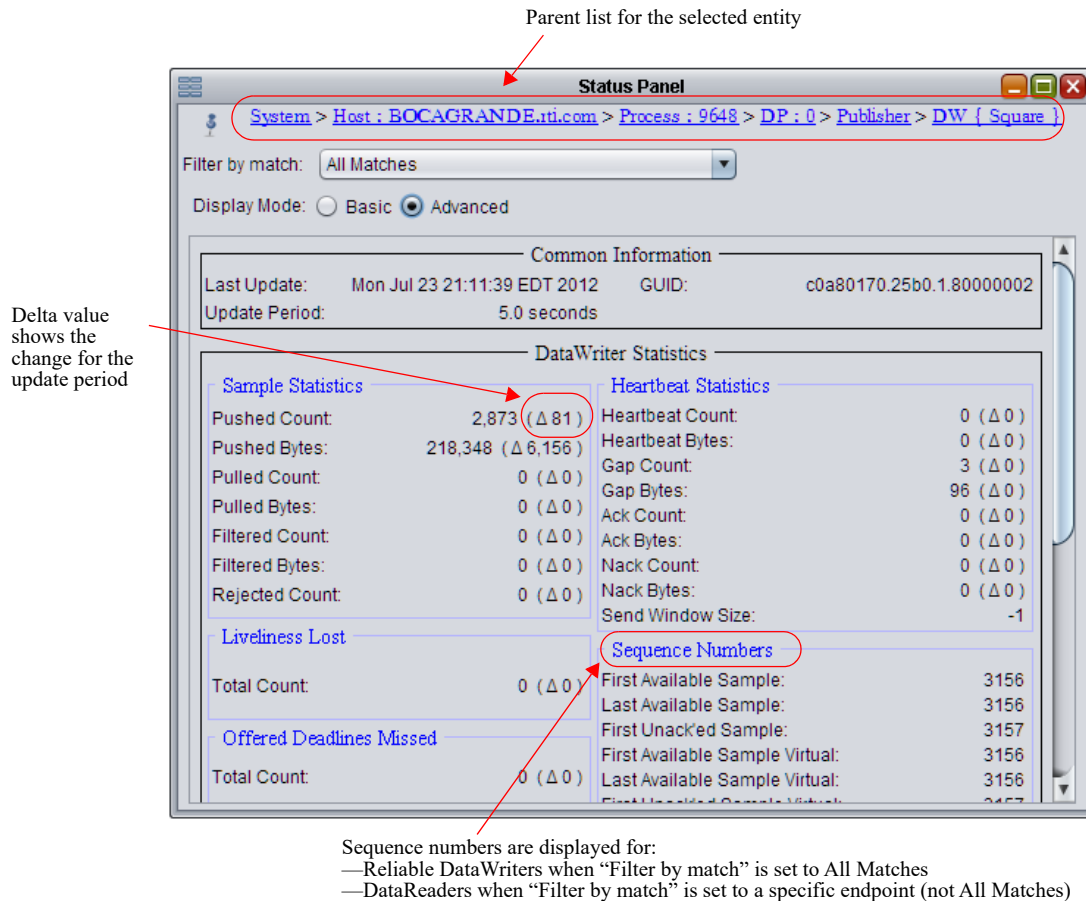
The contents for entity-specific panels change to show whatever entity is currently selected in the tree view. You can, however, 'pin' a panel to an entity to prevent it from switching contents; to do so, use the **pin** button  in the upper-left corner of the panel. When a panel is pinned to an entity (you will see the pin button changed to ) , it will periodically receive updated data for the same pinned entity—even when another entity is selected in the tree. The entity for the entity-specific panel (pinned or unpinned) is indicated by the entity hierarchy list at the top of the panel.

The **backward**  and **forward**  buttons in the toolbar can be used navigate through the entity-selection history.

3.3.1 Status Panel

The Status panel displays real-time statistics for the selected entity.

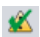
Figure 3.2 Status Panel



It displays statuses of the selected entity, or an aggregation of all the statuses of all the entities that belong to that selected item. For example, if you select a DataWriter, the statuses are just for that entity. If you select a Publisher, the statuses are an aggregation of those for all DataWriters that belong to that Publisher. Aggregation calculation period can be controlled by the command-line parameter **-aggregationPeriod-Seconds** (see Table 2.1, “Command-line Options” for details).

Basic and **Advanced** options are provided. **Basic** data only includes Sample Statistics and Heartbeat Statistics (for reliable readers or writers only). The **Advanced** option shows all the available statuses for the entity (some of the data is only available for reliable readers or writers).

Warnings and Error Statuses

Warnings and errors are checked for some of the statuses; warnings are highlighted in yellow, errors are in red. See Section 3.3.4 for details on which statuses are checked for warnings or errors. To clear the warnings and errors status of ALL entities in the system, select the  button from the toolbar or **Actions, Clear All Notifications** from the menu.

The **Common Information** section shows you general information about the entity—the GUID for the entity for this panel, when the data was last updated, and the current update period. The version of the remote entity is also provided (except for System, Host, and Process) in this panel. If the version of the remote entity is incompatible with *Monitor*, it will be marked as a warning (the background will be yel-

low). In this situation, very little data will be available about the remote entity (generally, just the information discovered about the DomainParticipant).

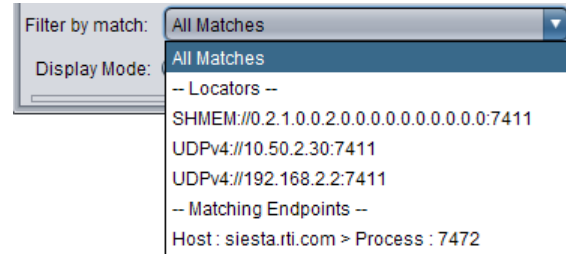
Filter by match only appears for DataWriters and DataReaders. If anything other than **All matches** is selected, the data shown in the Status panel will only include data that belongs to the matching kind that you have selected—a subset of the data for the entire entity.

Filter options for DataWriters

- All matches
- A selected locator
- A selected matching endpoint (DataReader)

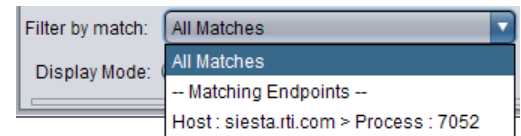
Filter options for DataReaders:

- All matches
- A selected matching endpoint (DataWriter)



Above: Example filter options for a DataWriter. The locators are for the transports. The matching endpoint is a DataReader.

Below: Example filter options for a DataReader. The matching endpoint is a DataWriter.



3.3.2 Chart Panel

The Chart panel graphs the selected statistics (on the Y axis) over time (the X axis) for the selected entity. You can control the time range with the slider at the bottom of the main window, and other chart properties by right-clicking within the chart area.

Filter by match only appears for DataWriters and DataReaders—[Section 3.3.1](#) describes the choices.

The **Chart Data** options depend on the type of the selected entity.

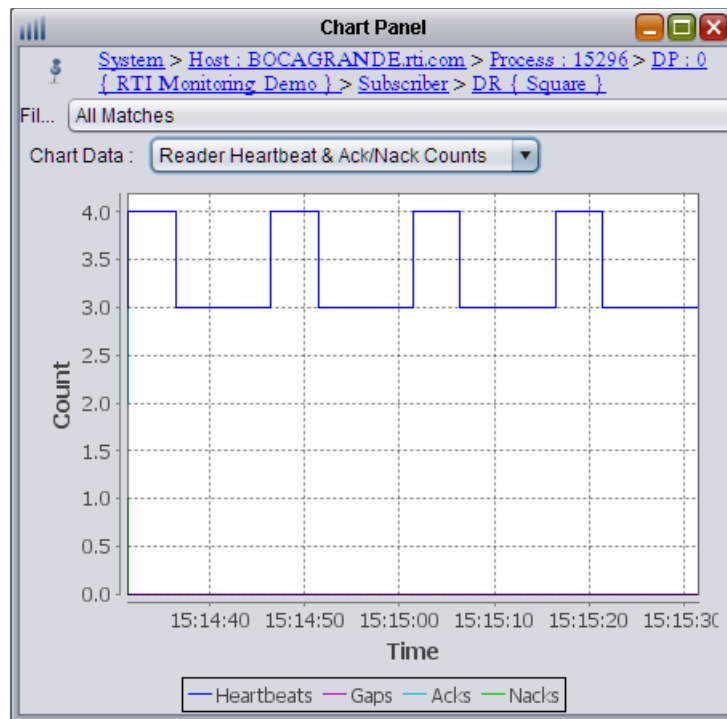
The number of samples that can be displayed in the chart is controlled by the **-historyDepth** command-line option (see [Table 2.1, “Command-line Options”](#) for details).

To plot multiple chart data for the same entity at the same time, create multiple Chart Panels.

3.3.3 Description Panel

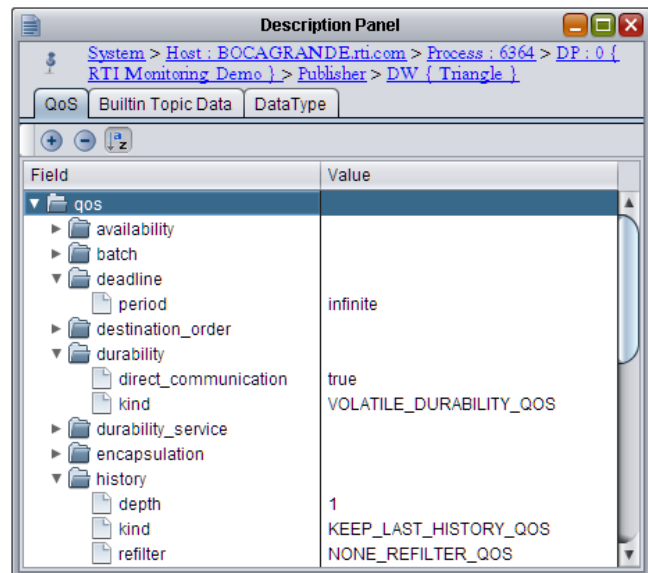
The Description panel’s contents depend on what is selected in the tree view. There are three tabs which may appear:

Figure 3.3 Chart Panel



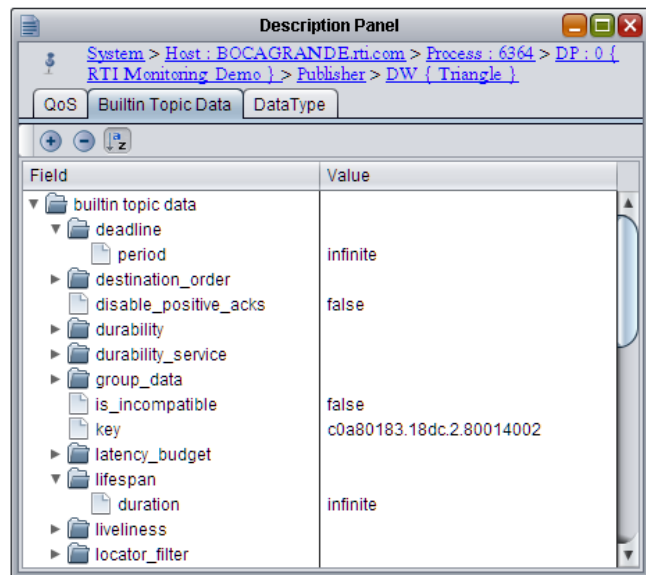
- **QoS**
(for all *Connex* DDS entities)—Shows the QoS settings for the selected entity.

Figure 3.4 Description Panel's QoS Tab



- **Builtin Topic Data**
(for DomainParticipants, DataWriters, and DataReaders)—Shows the propagated QoS in the builtin topic for the selected entity.

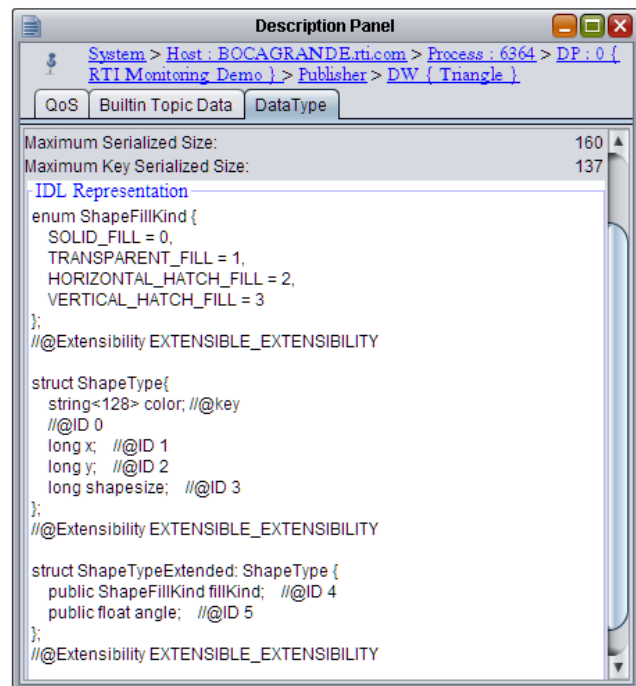
Figure 3.5 Description Panel's Builtin Topic Data Tab



- **Data Type**
(for DataWriters and DataReaders)—Shows the type name and ID; type code serialized size; and IDL representation of the associated data type:

The Description panel is not applicable when a system, host, or process is selected, since they are not DDS entities.

Figure 3.6 Description Panel's Data Type Tab




3.3.4 Notifications Panel



The Notifications panel displays the selected entity's current status (normal, warning or error) and a historical list of all related alarm statuses. Warnings are highlighted in yellow, errors are in red.

Clearing Notifications

To clear the warnings and error status of ALL entities in the system, select the  button from the toolbar or **Actions, Clear All Notifications** from the menu.

Historical statuses will never be cleared. The number of saved historical statuses is controlled by the **-notificationHistoryDepth** command-line option (see Table 2.1, "Command-line Options" for details).

Table 3.1 lists the conditions that are considered warnings or errors.

Figure 3.7 Notifications Panel



Table 3.1 Warning and Error Conditions

| Entity | Conditions | Warning or Error |
|-------------------|---|------------------|
| DataReader | Type Inconsistency (see Section 3.3.4.2) | Error |
| | Incompatible QoS | Error |
| | Samples rejected | Error |
| | Deadlines missed | Warning |
| | Liveliness lost | Warning |
| | Samples lost | Warning |
| DataWriter | Using push_on_write = false with best-effort reliability or an asynchronous publisher | Error |
| | Type conflicts (equality comparison) | Error |
| | Incompatible QoS | Error |
| | Inactivated DataReaders | Warning |
| | Liveliness lost | Warning |
| | Deadlines missed | Warning |
| DomainParticipant | On same host as another DomainParticipant that does not agree on using shared memory | Error |
| Topic | Inconsistent topic status | Error |

Type conflicts might be ignored if the **-ignoreTypeConflicts** command-line option is used (see Table 2.1, "Command-line Options" for details).

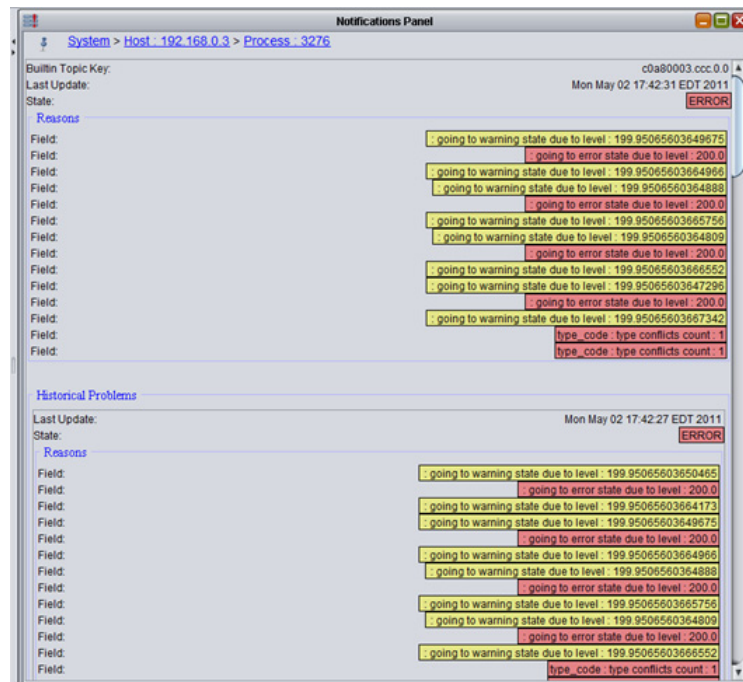
3.3.4.1 Additional Information from RTI Distributed Logger

RTI Distributed Logger is a library that enables applications to publish log messages to *Connex DDS*. It is part of *Connex DDS*.

If a *Connex DDS* application uses *Distributed Logger*, the log messages it sends to *Monitor* are used as an integral part of the entity state kept for the associated Process. You can see this in [Figure 3.8](#), where log messages have changed the Process' state to **Error** because there are error-level log messages. This is a simple but powerful way to monitor the health of a distributed system with minimal integration work. If the application already tracks its state, it can write updates to the state for Warning and Error to the log. Those will be picked up by *Monitor* and reflected in the display.

See also: [Distributed Logger Panel \(Section 3.3.5\)](#).

Figure 3.8 Notifications Panel: Integrating Log Message Level with Entity State



Note: *Monitor* cannot downgrade entity state from Error to Warning to Normal. You can make this change explicitly with the **Clear All Notifications** button on the toolbar.

3.3.4.2 Understanding Type Consistency

Monitor includes partial support for the "Extensible and Dynamic Topic Types for DDS" specification from the Object Management Group (OMG)¹. This section assumes that you are familiar with Extensible Types and you have read the *RTI Connex DDS Core Libraries Getting Started Guide Addendum for Extensible Types*.

Monitor proactively checks for type consistency. This is done as new types are discovered from DataWriters and DataReaders. If there are type inconsistencies, they will be added to the notifications for the DataWriter and DataReader. The type-consistency checking considers *TypeObject* information described in the "Extensible and Dynamic Topic Types for DDS" specification.

1. <http://www.omg.org/spec/DDS-XTypes/>

How Monitor determines type consistency:

1. If the TypeObject information is missing for either the DataWriter or DataReader:
 - a. If the registered type names are different, then they are inconsistent.
 - b. If the registered type names are equal:
 - If the TypeCode information is missing for either the DataWriter or DataReader, or if the TypeCodes are equal, they are consistent.
 - Otherwise, they are inconsistent.
2. If the TypeObject information is present for both the DataWriter and DataReader:
 - a. If the DataReader's TypeConsistencyEnforcementQosPolicy's **kind** is set to DISALLOW_ -TYPE_COERCION:
 - If the types are not structurally identical, then they are inconsistent.
 - Otherwise, they are consistent.
 - b. If the DataReader's TypeConsistencyEnforcementQosPolicy's **kind** is set to ALLOW_ -TYPE_COERCION:
 - If the DataReader type is not assignable to the DataWriter type, then they are inconsistent.
 - Otherwise, they are consistent.

3.3.5 Distributed Logger Panel

Monitor's Distributed Logger panel allows you to see messages from *Distributed Logger*, a separate library that can be included with *Connexst DDS* applications. You can also use this panel to control *Distributed Logger*.

Distributed Logger is integrated into *Monitor's* entity state (normal, warning, and error) tracking feature. Therefore error and warning messages logged to an application's logging system and sent to *Monitor* through *Distributed Logger* will change a process' status to Error and Warning, respectively.

The Distributed Logger panel is associated with Process entities. Therefore it only displays information when a Process is selected from the Physical View and that Process is running an instance of *Distributed Logger*.

As seen in [Figure 3.9](#), the Distributed Logger panel has three tabs:

- [Messages Tab \(Section 3.3.5.1\)](#)
- [State and Controls Tab \(Section 3.3.5.2\)](#)
- [File Logger Tab \(Section 3.3.5.3\)](#)

When a Process containing an instance of *Distributed Logger* is selected, the cached log messages populate the table in the **Messages** tab, and the **State and Controls** and **File Logger** tabs are updated to reflect the state of the *Distributed Logger* instance.

3.3.5.1 Messages Tab

The Messages Tab, shown in [Figure 3.9](#) and [Figure 3.10](#), displays a table containing the log messages from the currently selected Process. The messages can include those logged using the application's logging library, RTI Logger, as well as the standard out and standard error of the application, depending on how the application configured *Distributed Logger*.

By default, the messages are presented sorted based on the order in which they were written. By clicking on the column headers, you can re-sort the table to meet your needs. The panel also has a "Find" button to do simple string searches, a control to limit the number of rows which are displayed, and a view filter

Figure 3.9 Distributed Logger Panel

The screenshot shows the Distributed Logger Panel with the following components:

- Tree View (Left):** Displays the system hierarchy. The 'Process' entry under 'DomainParticipant-0' is selected, indicated by a red arrow and the label 'Selected Process'.
- Message Table (Right):** Displays a list of messages with columns: Seq #, Time, Level, Category, and Message. The messages are filtered by the selected process.
- Message Details (Bottom Right):** Provides a detailed view of the selected message, including the Publication Sequence Number, Time, Level, Category, and Message text.

| Seq # | Time | Level | Category | Message |
|-------|----------------------------|---------|--------------------|---|
| 1 | 05/02/2011 05:38:48 899 PM | Debug | app.SampleCount... | strategy: RAMP: baseline: 1: new value: 0 |
| 2 | 05/02/2011 05:38:58 898 PM | Debug | app.SampleCount... | strategy: RAMP: baseline: 1: new value: 1 |
| 3 | 05/02/2011 05:38:59 639 PM | Warning | app.LaunchSyste... | going to warning state due to level: 199.9506560... |
| 4 | 05/02/2011 05:38:59 639 PM | Error | app.LaunchSyste... | going to error state due to level: 200.0 |
| 5 | 05/02/2011 05:38:59 639 PM | Warning | app.LaunchSyste... | going to warning state due to level: 199.9506560... |
| 6 | 05/02/2011 05:38:59 889 PM | Info | app.LaunchSyste... | going to normal state due to level: 199.80267284... |
| 7 | 05/02/2011 05:39:08 898 PM | Debug | app.SampleCount... | strategy: RAMP: baseline: 1: new value: 0 |
| 8 | 05/02/2011 05:39:09 396 PM | Warning | app.LaunchSyste... | going to warning state due to level: 199.9506560... |
| 9 | 05/02/2011 05:39:09 397 PM | Error | app.LaunchSyste... | going to error state due to level: 200.0 |
| 10 | 05/02/2011 05:39:09 398 PM | Info | app.LaunchSyste... | going to normal state due to level: 199.80267284... |
| 11 | 05/02/2011 05:39:09 398 PM | Info | app.LaunchSyste... | going to normal state due to level: 199.80267284... |
| 12 | 05/02/2011 05:39:13 651 PM | Warning | app.LaunchSyste... | going to warning state due to level: 199.9506560... |
| 13 | 05/02/2011 05:39:13 651 PM | Error | app.LaunchSyste... | going to error state due to level: 200.0 |
| 14 | 05/02/2011 05:39:13 652 PM | Warning | app.LaunchSyste... | going to warning state due to level: 199.9506560... |
| 15 | 05/02/2011 05:39:13 653 PM | Info | app.LaunchSyste... | going to normal state due to level: 199.80267284... |
| 16 | 05/02/2011 05:39:16 403 PM | Warning | app.LaunchSyste... | going to warning state due to level: 199.9506560... |
| 17 | 05/02/2011 05:39:16 404 PM | Error | app.LaunchSyste... | going to error state due to level: 200.0 |
| 18 | 05/02/2011 05:39:16 405 PM | Warning | app.LaunchSyste... | going to warning state due to level: 199.9506560... |
| 19 | 05/02/2011 05:39:16 406 PM | Info | app.LaunchSyste... | going to normal state due to level: 199.80267284... |
| 20 | 05/02/2011 05:39:18 656 PM | Warning | app.LaunchSyste... | going to warning state due to level: 199.9506560... |
| 21 | 05/02/2011 05:39:18 657 PM | Error | app.LaunchSyste... | going to error state due to level: 200.0 |
| 22 | 05/02/2011 05:39:18 657 PM | Warning | app.LaunchSyste... | going to warning state due to level: 199.9506560... |
| 23 | 05/02/2011 05:39:18 658 PM | Info | app.LaunchSyste... | going to normal state due to level: 199.80267284... |
| 24 | 05/02/2011 05:39:18 898 PM | Debug | app.SampleCount... | strategy: RAMP: baseline: 1: new value: 1 |

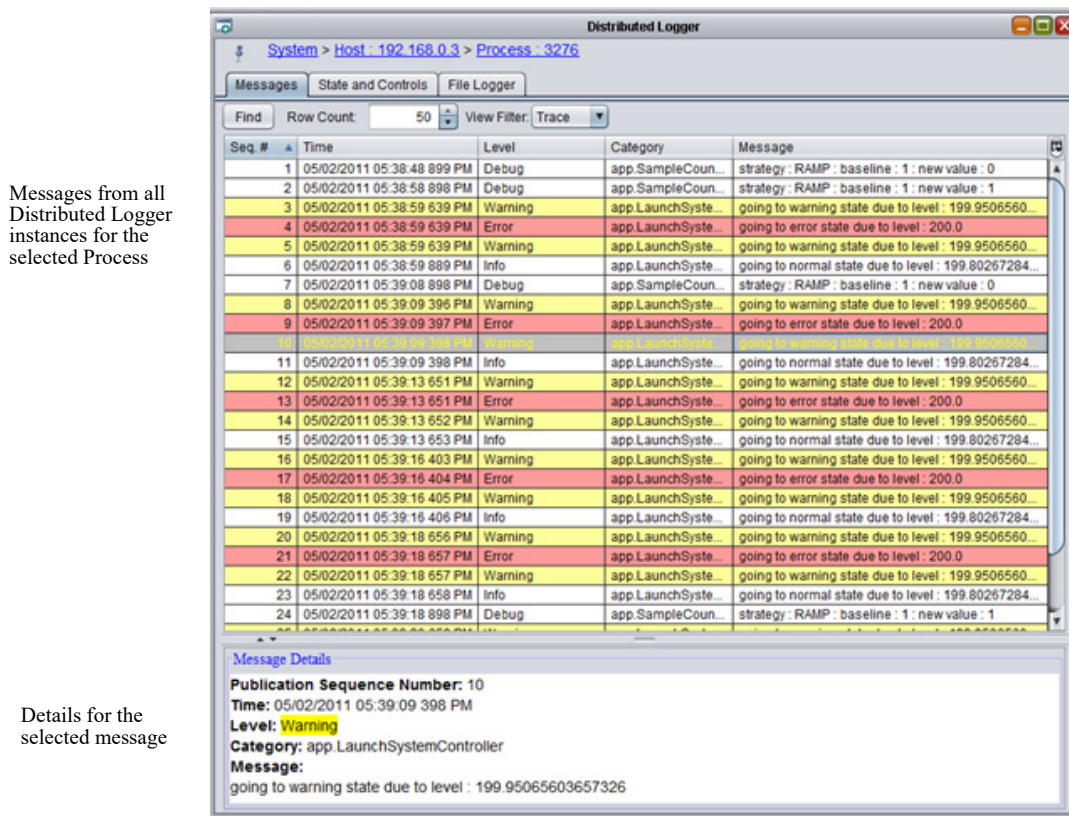
Message Details:

- Publication Sequence Number: 10
- Time: 05/02/2011 05:39:09 396 PM
- Level: **Warning**
- Category: app.LaunchSystemController
- Message: going to warning state due to level: 199.95065603657326

System Metrics | Domains: 1 | Hosts: 1 | Processes: 2 | Participants: 2 | Topics: 11 | Publishers: 4 | DataWriters: 13 | Subscribers: 2 | DataReaders: 9

which shows filters messages that are less severe than the selected level. At the bottom of the panel is a detailed display for the selected messages from the table. This is primarily useful when the log message contains multiple lines (only a single line is displayed in the table).

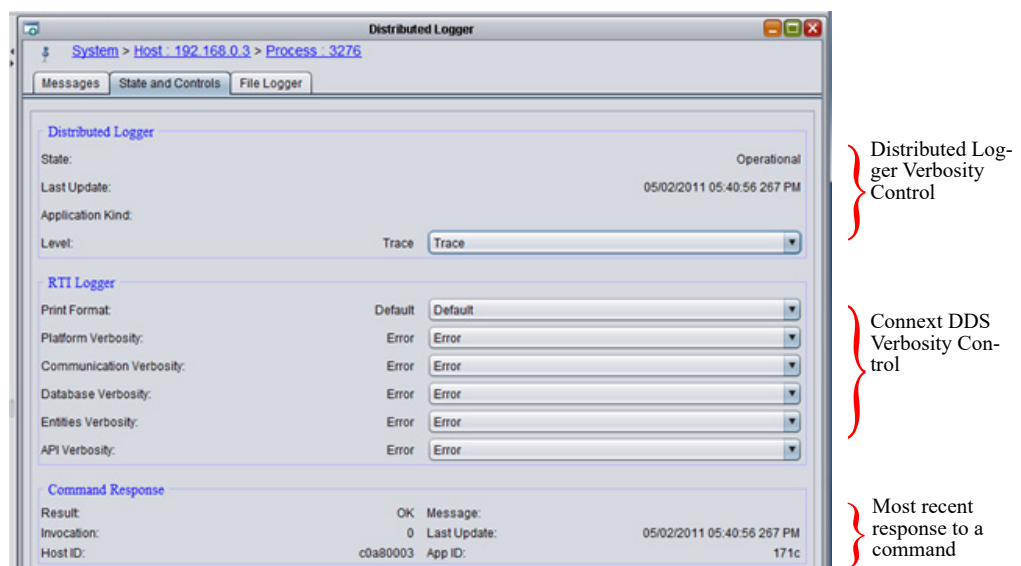
Figure 3.10 Distributed Logger Panel's "Messages" Tab



3.3.5.2 State and Controls Tab

The State and Controls tab, shown in Figure 3.11, provides the ability to control the verbosity of the Distributed Logger instance directly from *Monitor*. It also provides control over the RTI Logger verbosity and shows the most recent (if any) response to commands it has processed.

Figure 3.11 Distributed Logger Panel's "State and Controls" Tab



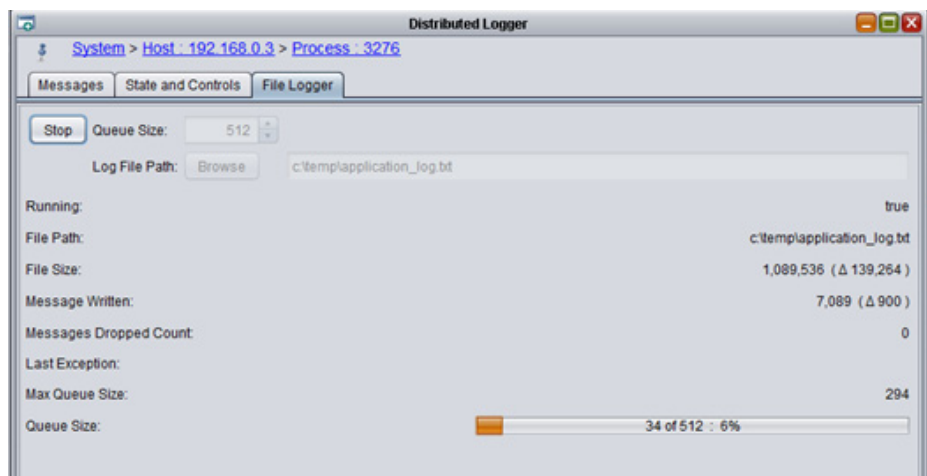
3.3.5.3 File Logger Tab

The File Logger tab, shown in [Figure 3.12](#), provides a way to save log messages for a single Process to a file. This is especially useful when issues are noticed for a Process and you want to capture the output to share with others for analysis. Another more general-purpose way to save log messages to a file is provided as an example with *Distributed Logger*, see the *RTI Connext DDS Core Libraries User's Manual*.

The File Logger tab provides inputs for the file path and the queue size. There are displays that show how many messages have been written as well as dropped (due to queue size). The current and maximum queue sizes are also displayed.

Note: The **File Size** may not update as quickly as the **Messages Written** count. In fact, the **File Size** is usually zero until several messages have been written. This is because buffering is used to increase the throughput performance while writing to the file.

Figure 3.12 Distributed Logger Panel's "File Logger" Tab



3.4 System-Wide Panels and Tables

System-wide panels and tables show a summary of the states of the whole system.

3.4.1 System Overview Panel



The System Overview panel displays a map of the entities in the system.

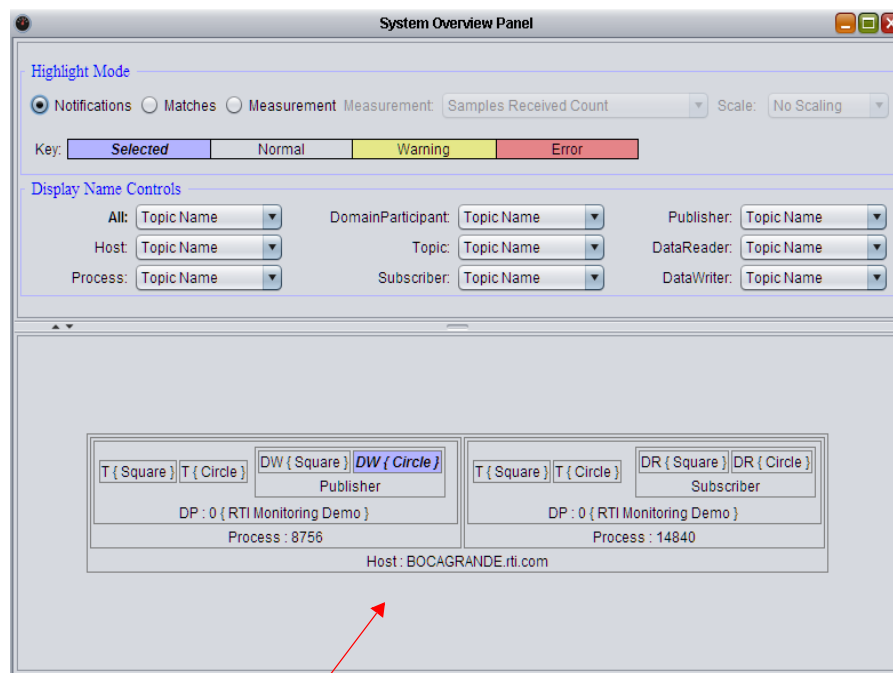
You can change the criteria for how items in the map are highlighted by selecting the **Notifications**, **Matches**, or **Measurement** option. A **Key** is provided to indicate the meaning of the different highlights in the map.

If the **Notifications** option is selected, the map will show all the entities in the system and their colors will show if they are in normal, warning or error mode.

If the **Matches** option is selected, the map will show all the entities that are currently matched and all the entities that are currently unmatched due to potential errors.

For an 'ideal match,' opposing endpoints (DataWriters and DataReaders) must have the same domain ID, same topic name, and belong to compatible partitions (if any are specified). This list of ideal matches is compared to the list of actual matches received from *Monitoring Library* to determine which entities are marked as matches or mismatches in the map. There are various reasons for a mismatch, such as incom-

Figure 3.13 System Overview Panel (Notifications Option)



A visual map of the system.

The outer-most box represents the host.

T = Topic
 DR = DataReader
 DW = DataWriter
 Sub = Subscriber
 Pub = Publisher
 DP = DomainParticipant
 P:# =process ID

patible QoS or data types, misconfigured discovery peers, or use of the *Connex* DDS `ignore_*`() APIs, among other reasons.

The matches are shown at the peer-level only. That is, if you select a Publisher, you will not see matches for the DataWriters that belong to it. Table 3.2 provides more information on what matches are shown for selected entities.

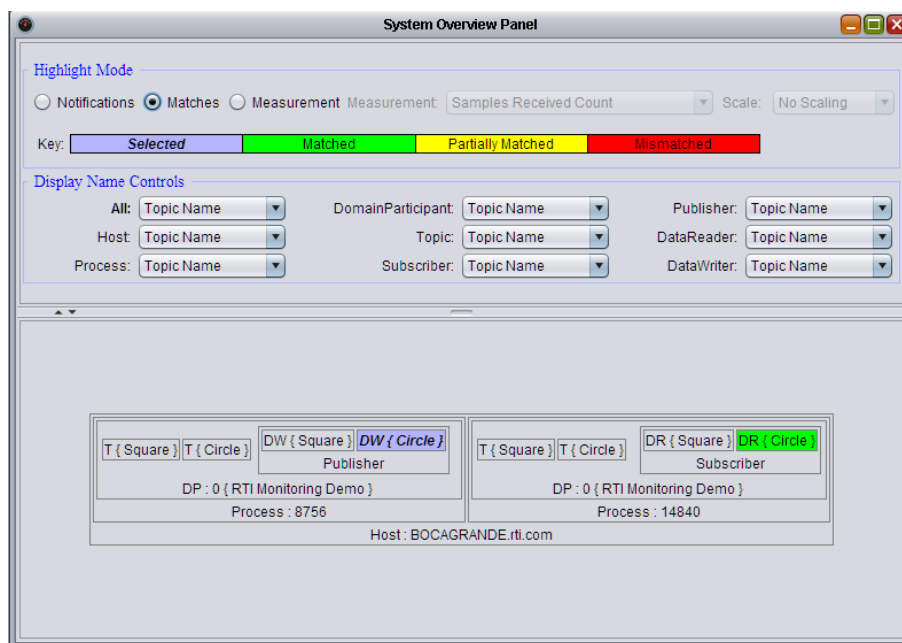
Table 3.2 Peer-Level Objects

| If you select this type of object ... | You will see matching information for ... |
|---------------------------------------|---|
| Host | Hosts |
| DomainParticipant | DomainParticipants |
| Publisher | Subscribers |
| Subscriber | Publishers |
| DataWriter | DataReaders |
| DataReader | DataWriters |
| Topic | Topics |

If an entity is highlighted as ‘Partially Matched,’ *some* (not all) of its child entities are not matched (such as a Publisher that has one matched DataWriter and one or more unmatched DataWriters.)

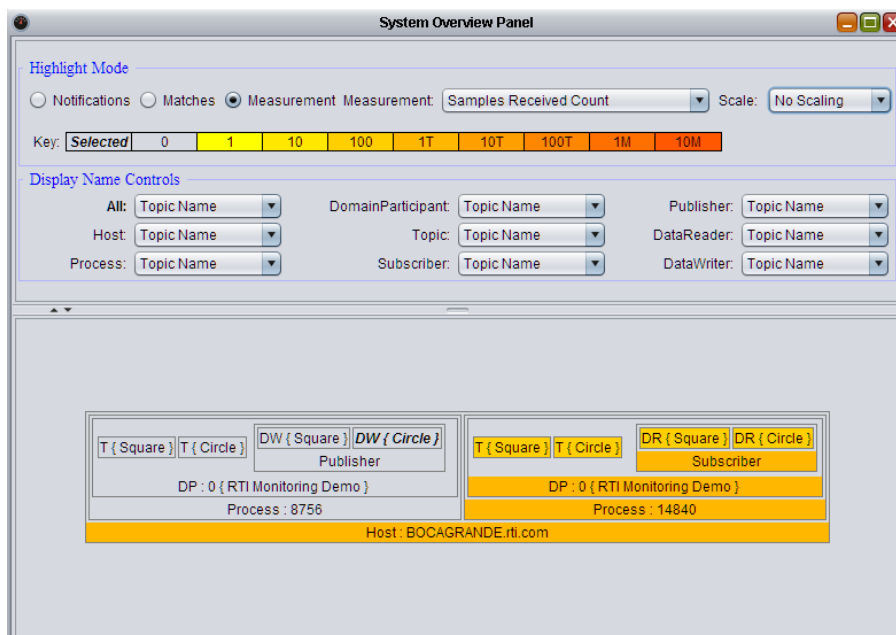
The **-matchRefreshPeriodSeconds** command-line option controls how often the matching information is refreshed (see [Table 2.1, “Command-line Options”](#) for details).

Figure 3.14 System Overview Panel (Matches Option)



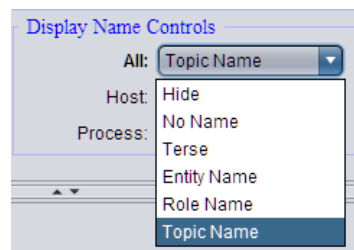
If the **Measurement** option is selected, the **Measurement** and **Scale** drop-down menus are enabled. **Measurement** allows you to select which data value to display in the map. **Scale** allows you to control the scaling factor of the data value.

Figure 3.15 System Overview Panel (Measurement Option)



Move the mouse over an entity in the map will show you the details of that entity for the selected highlight mode.

The **Display Name Controls** simply control how the items in the map are labeled (or whether they are hidden). Each entity types can be hidden from the map, appear with no name label, be labeled tersely (with just an abbreviation for the entity type, such as T for a Topic), or include more information, such as Entity Name, Role Name, or Topic Name.

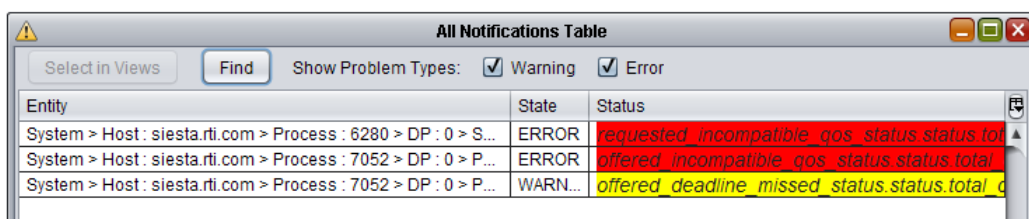


3.4.2 All Notifications Table



The All Notifications Table shows you all the current errors and warnings for the entire system (not just the currently selected entity).

Figure 3.16 All Notifications Table




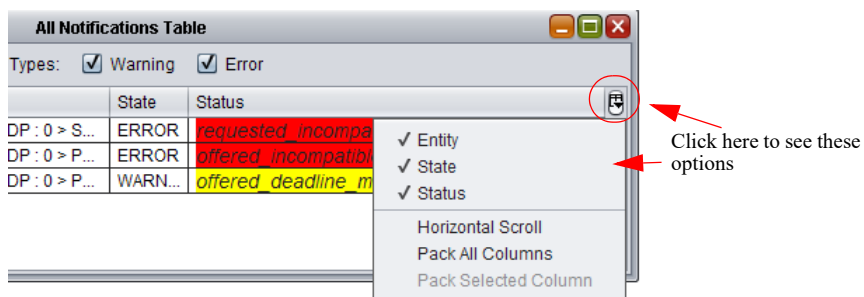
This panel has filters to include or exclude warnings/errors. Errors are shown in red. Warnings are shown in yellow.

If a row is selected in the table, the **Select in Views** button selects the entity in tree views on the left.

The **Find** button is useful for searching through a large table. (This is a simple string search, so you must use the exact same form as displayed in the table.)


Clicking on a column heading will sort the table by the values in that column. Clicking it again will sort in the opposite order.

The  button just above the vertical scrollbar allows you to choose which columns appear in the table. It also has options to pack (resizes) columns and enable a horizontal scrollbar. (Note: to enable the 'Pack Selected Column' option, select a cell in the top row.)



You can change the order of the columns by simply dragging them to a new place in the table.

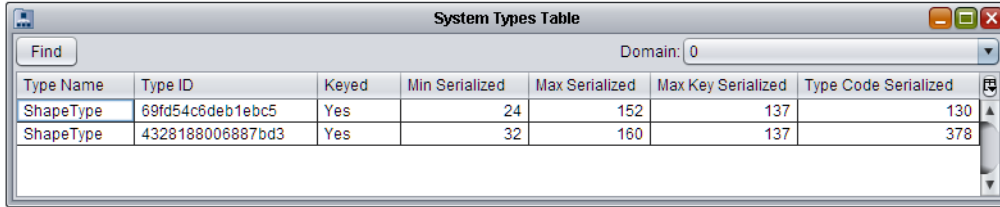
Clearing Notifications

To clear the notifications, select the  button from the toolbar or **Actions, Clear All Notifications** from the menu.

3.4.3 System Types Table


The System Types table displays all the known data types in the selected domain.

Figure 3.17 System Types Table



| Type Name | Type ID | Keyed | Min Serialized | Max Serialized | Max Key Serialized | Type Code Serialized |
|-----------|------------------|-------|----------------|----------------|--------------------|----------------------|
| ShapeType | 69fd54c6deb1ebc5 | Yes | 24 | 152 | 137 | 130 |
| ShapeType | 4328188006887bd3 | Yes | 32 | 160 | 137 | 378 |

The **Domain** drop-down menu includes a list of all the joined domain IDs for you to select.

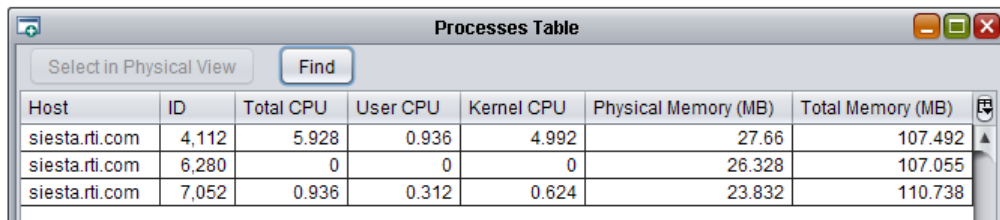
Like the [All Notifications Table \(Section 3.4.2\)](#), this table also has a  button (above the vertical scrollbar) to control the columns that appear in the table. You can also sort the table based on any of the columns by clicking the column heading.

The **Find** button is useful for searching through a large table. (This is a simple string search, so you must use the exact same form as displayed in the table.)

3.4.4 Processes Table

The Processes table displays memory and CPU information for all the processes in the system.


Figure 3.18 Processes Table



| Host | ID | Total CPU | User CPU | Kernel CPU | Physical Memory (MB) | Total Memory (MB) |
|----------------|-------|-----------|----------|------------|----------------------|-------------------|
| siesta.rti.com | 4,112 | 5.928 | 0.936 | 4.992 | 27.66 | 107.492 |
| siesta.rti.com | 6,280 | 0 | 0 | 0 | 26.328 | 107.055 |
| siesta.rti.com | 7,052 | 0.936 | 0.312 | 0.624 | 23.832 | 110.738 |

These values are valid only if the host is a Linux or Windows system.

For multi-core machines, CPU usage can be greater than 1.


Like the [All Notifications Table \(Section 3.4.2\)](#), this table also has a  button (above the vertical scrollbar) to control the columns that appear in the table. You can also sort the table based on any of the columns by clicking the column heading.

For example, you can quickly sort by Total CPU to see which process is using the most. When the process row is selected in the table, you can use the **Select in Physical View** button to see where this process is within the physical tree.

The **Find** button is useful for searching through a large table. (This is a simple string search, so you must use the exact same form as displayed in the table.)



3.5 Joining and Leaving Domains

By default, *Monitor* will automatically discover and join all active DDS domains.

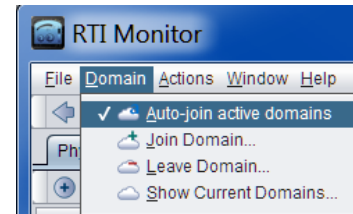
To enable/disable this feature, use the  button or select **Domain, Auto-join active domains** from the menu. The enabled/disabled status for this feature is preserved between launches of *Monitor*.

If the Auto-join feature is enabled: First, *Monitor* will join domain 0. Then all other active domains will be discovered through their announcements in domain 0. Each discovered domain will be joined if it has not already been joined.


To see the currently joined domains, select **Domain, Show Current Domains...** from the menu.


You can manually join and leave specific domains by using the  and  buttons on the toolbar or the commands in the **Domain** menu. Note: When auto-join is enabled, *Monitor* cannot leave domain 0.

If you leave a domain, it will not be rejoined automatically unless you disable and then re-enable the Auto-join feature.

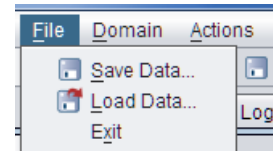
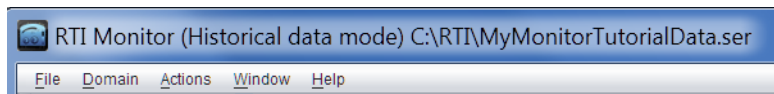


3.6 Saving and Loading Data

Monitor can work with live data or data that's been saved to a file. To save monitoring data, use the  button on the toolbar or select **File, Save Data...** from the menu. The file will be saved in a Serialized Java Objects format (.ser).

To load a data file, use the  button on the toolbar or select **File, Load Data...** from the menu.

When *Monitor* is working with saved data, you will see **(Historical data mode)** in the title bar, followed by the filename. For example:





Monitor will save notifications, descriptions, and statistics (for DomainParticipants, DataReaders, and DataWriters), up to the history depth or notification history depth for every object being monitored.

Notes:

- While viewing saved data, you will not see built-in topic data or the IDL representation of the data type in the Description panel. This information is not saved in the data file.
- You cannot save data while using a loaded data file.
- After viewing saved data, to return to live data you must reconnect to the domain(s) that you want to monitor by joining the domain (see [Section 3.3.5](#)).

3.7 Connecting and Disconnecting the Display

To stop *Monitor* from updating the display (while still receiving data), select the  button on the toolbar or **Actions, Disconnect Display** from the menu.

To resume display updates, select the  button on the toolbar or **Actions, Connect Display** from the menu.

Note: Data samples may be lost at the *Connexx DDS* level while *Monitor's* display is disconnected because the History QoS is configured to only keep the last few samples.

3.8 Changing Transport Settings in the Configuration File

The QoS profile used by *Monitor* is in `<NDDSHOME>/resource/xml/RTI_MONITOR_QOS_PROFILES.xml`. You can edit this file to adjust the QoS to fit your system's needs. The typical use case is to adjust the transport settings so that they align with the other applications in the system, as these are critical for communication. However, changing any other settings in this file may result in unpredictable behavior and is not supported.

Generally, the configuration file is editable on the system. There are certain circumstances where it cannot be updated, such as on Windows 7 when *Monitor* is installed in the "Program Files" directory. If this is the case, open your text editor with 'administrative' permissions before opening the QoS file.