

# **RTI Administration Console**

**Release Notes**

**Version 6.0.0**



© 2019 Real-Time Innovations, Inc.  
All rights reserved.  
Printed in U.S.A. First printing.  
February 2019.

## **Trademarks**

Real-Time Innovations, RTI, NDDS, RTI Data Distribution Service, Connex, Micro DDS, the RTI logo, IRTI and the phrase, “Your Systems. Working as one,” are registered trademarks, trademarks or service marks of Real-Time Innovations, Inc. All other trademarks belong to their respective owners.

## **Copy and Use Restrictions**

No part of this publication may be reproduced, stored in a retrieval system, or transmitted in any form (including electronic, mechanical, photocopy, and facsimile) without the prior written permission of Real-Time Innovations, Inc. The software described in this document is furnished under and subject to the RTI software license agreement. The software may be used or copied only under the terms of the license agreement.

This is an independent publication and is neither affiliated with, nor authorized, sponsored, or approved by, Microsoft Corporation.

The security features of this product include software developed by the OpenSSL Project for use in the OpenSSL Toolkit (<http://www.openssl.org/>).

## **Technical Support**

Real-Time Innovations, Inc.

232 E. Java Drive

Sunnyvale, CA 94089

Phone: (408) 990-7444

Email: [support@rti.com](mailto:support@rti.com)

Website: <https://support.rti.com/>

# Contents

---

<b>Chapter 1 Supported Platforms</b> .....	<b>1</b>
<b>Chapter 2 Compatibility</b> .....	<b>2</b>
<b>Chapter 3 What's New in 6.0.0</b>	
3.1 New platforms .....	3
3.2 Choice of whether or not to enable auto-join on first start .....	3
3.3 New view for Routing Service .....	3
3.4 New tabs for Recording Service .....	4
3.5 New DDS logical view filter .....	5
<b>Chapter 4 What's Fixed in 6.0.0</b>	
4.1 Custom QoS settings not restored upon restart .....	6
4.2 Multiple RTI Connexx DDS Micro applications displayed as one .....	6
4.3 Admin Console showed invalid data for optional members .....	6
4.4 Error subscribing to Topics with aliased enums .....	6
4.5 Visualizing issues with unbounded sequences .....	7
4.6 Ambiguity as to whether the local or remote Admin Console subscribed to a Topic .....	7
4.7 User interface sometimes unresponsive .....	7
4.8 Slow responsiveness and large memory growth when subscribing to Topic with large array .....	7
4.9 IDL unavailable if type inherited through alias .....	7
4.10 IDL 'wchar' fields caused errors .....	7
4.11 Admin Console failed to use local API Reference HTML documentation when path to installation directory contained spaces .....	8
4.12 Ownership issues not always shown .....	8
<b>Chapter 5 Known Issues</b>	
5.1 Preferences Dialog Shows Error Message .....	9
5.2 Limited to Single Instance of Admin Console on Mac OS X Platforms .....	9
5.3 Limited Support for Keyed, Unbounded Sequences .....	9

---

---

5.4 Additional Library Needed on Fedora 12 64-bit Systems .....	10
5.5 Interaction between Admin Console and RTI Recording Console .....	10
5.6 Admin Console Incompatible with RTI Routing Service Configurations that use DomainParticipant Name QoS .....	10
5.7 Admin Console Views Restored when Admin Console is Restarted .....	10
<b>Chapter 6 Third-Party Licenses</b>	
6.1 Apache License .....	12

# Chapter 1 Supported Platforms

This release of *RTI® Administration Console* is supported on the platforms in [Table 1.1 Supported Platforms](#).

No custom target platforms are supported.

**Table 1.1 Supported Platforms**

Operating System	Version
Linux®	All Linux platforms on x86/x64 CPUs listed in the <i>RTI Connex® DDS Core Libraries Release Notes</i> for the same version number, except not supported on SUSE Linux Enterprise Server 11, not supported on Wind River® Linux 7. Not supported on ARM® CPUs.
OS X®	All OS X platforms listed in the <i>RTI Connex DDS Core Libraries Release Notes</i> for the same version number.
Windows®	All Windows platforms listed in the <i>RTI Connex DDS Core Libraries Release Notes</i> for the same version number.

**Note:** When running on a VMWare Virtual Machine, *Admin Console's* user interface for *Routing Service* may not display correctly. This is because *Admin Console* uses JavaFX, which is not officially supported on VMWare virtualization systems. For more information on supported JavaFX 2 Certified System Configurations, please see:

<https://www.oracle.com/technetwork/java/javafx/downloads/supportedconfigurations-1506746.html>.

# Chapter 2 Compatibility

*Admin Console* is compatible with these components:

- *RTI Database Integration Service*
- *RTI Distributed Logger*
- *RTI Persistence Service*
- *RTI Queuing Service*
- *RTI Recording Service* (including its *Replay* and *Record* tools)
- *RTI Routing Service*

For backward compatibility information between 6.0.0 and previous releases for these components, see the *Migration Guide* on the RTI Community Portal (<https://community.rti.com/documentation>).

*Admin Console* has been tested with Oracle JRE version 8, which is included in the installation package. No other versions of Java are supported.

To run *Admin Console* on a Linux platform, *Admin Console* requires at least GTK+ 2 version 2.24.0 and its dependencies. *Admin Console* also needs to have at least Cairo version 1.9.4 and its dependencies. As a result of these dependencies, *Admin Console* might not be able to run on some operating systems, such as SUSE Linux Enterprise Server 11 SP2 (which has an older version of GTK+ 2).

# Chapter 3 What's New in 6.0.0

## 3.1 New platforms

This release adds support for these platforms:

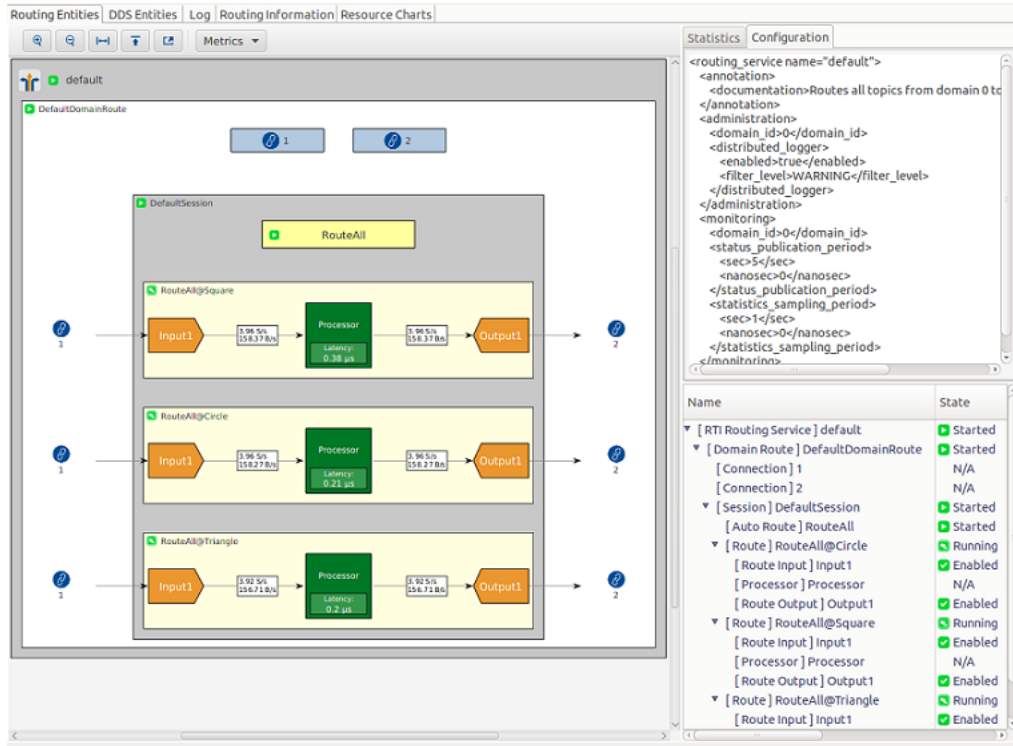
- SUSE Linux Enterprise Server 12 (x64Linux2.6gcc4.3.4)
- Ubuntu 18.04 LTS (x64Linux4gcc7.3.0)

## 3.2 Choice of whether or not to enable auto-join on first start

*Admin Console* will now open a dialog to ask whether or not auto-join should be enabled the first time that it is started. If "Automatically discover and join domains (recommended)" is selected, *Admin Console* will start normally. If "Manually join and leave domains" is selected, a preferences page will open in order to set up the initial configuration.

## 3.3 New view for Routing Service

This version of *Admin Console* contains a new view for *Routing Service* 6.0.0. The new view is quite different from the previous *Routing Service* view; it is much more graphical. This feature complements the many updates added to the 6.0.0 version of *Routing Service*. Take a look through the *Admin Console* online help for more information.

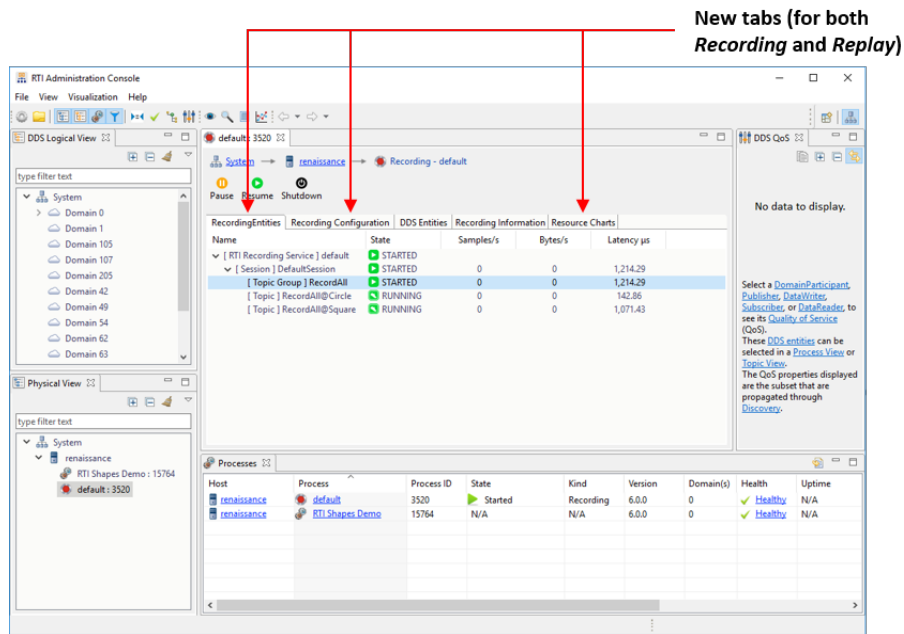


### 3.4 New tabs for Recording Service

The user interface for viewing *Recording Service* (both *Recorder* and *Replay*) has been updated when working with *Recording Service* 6.0.0. Three new tabs have been added that show the following information for the service:

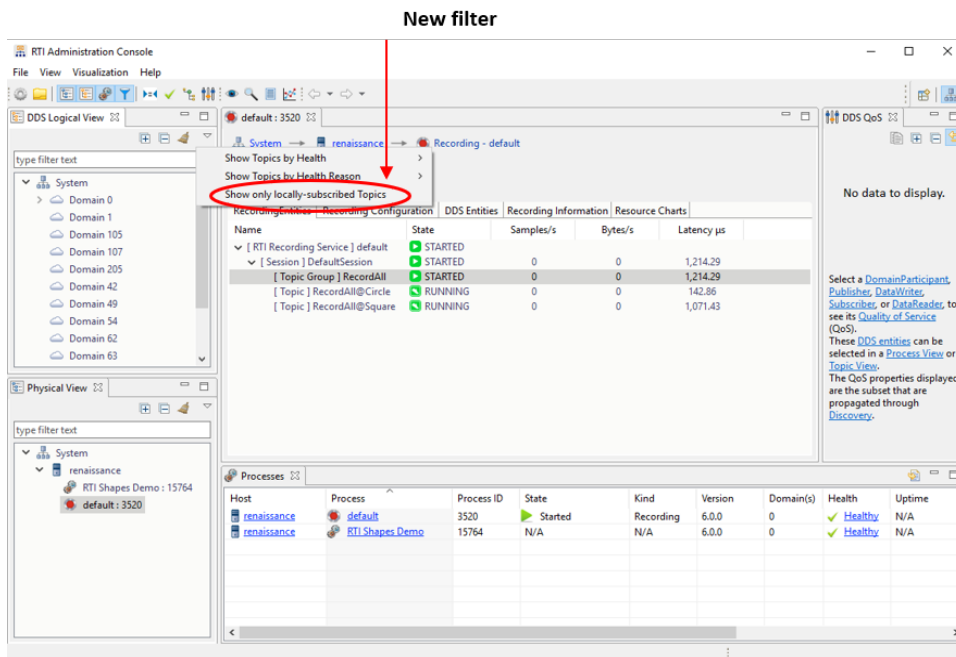
- Recording/Replay Entities: internal entities, including their state and statistics (throughput and latency)
- Recording/Replay Configuration: configuration options
- Resource Charts: resource utilization, including CPU and memory





### 3.5 New DDS logical view filter

There is a new filter for the DDS Logical View. This filter only shows locally subscribed-to Topics in the view, making it easier to manage local subscriptions.



# Chapter 4 What's Fixed in 6.0.0

This section describes bugs fixed in 6.0.0. These fixes have been made since 5.3.1 was released.

## 4.1 Custom QoS settings not restored upon restart

When custom QoS settings were chosen through the Preferences dialog, they were not restored upon restart of the application. This problem did not get fixed in release 5.2.3 when it was first addressed; now it has been fully resolved.

[RTI Issue ID ADMINCONSOLE-457]

## 4.2 Multiple RTI Connex DDS Micro applications displayed as one

Multiple *RTI Connex DDS Micro* applications were previously displayed as a single application. This problem was partially resolved in previous releases and is fully resolved now.

[RTI Issue ID ADMINCONSOLE-556]

## 4.3 Admin Console showed invalid data for optional members

*Admin Console* showed invalid data for optional members within a sample. This occurred when receiving a new sample that did not contain any data for these optional members. This problem has been resolved.

[RTI Issue ID ADMINCONSOLE-575]

## 4.4 Error subscribing to Topics with aliased enums

Subscription failed when *Admin Console* attempted to subscribe to a *Topic* in which enums were aliased. This problem has been resolved.

[RTI Issue ID ADMINCONSOLE-589]

## 4.5 Visualizing issues with unbounded sequences

When visualizing a *Topic* containing unbounded sequences, *Admin Console* sometimes became unresponsive. Also, the equivalent IDL representation shown for an unbounded sequence was formatted as a bound sequence with a limit of 2,147,483,647. Both of these problems have been resolved.

[RTI Issue ID ADMINCONSOLE-616]

## 4.6 Ambiguity as to whether the local or remote Admin Console subscribed to a Topic

*Admin Console* removed identifying information from the DomainParticipantQos, making it difficult to determine whether the local or remote *Admin Console* instance was subscribing to a *Topic*. This information (stored in the PropertyQos) is now preserved.

[RTI Issue ID ADMINCONSOLE-621]

## 4.7 User interface sometimes unresponsive

The *Admin Console* user interface would sometimes become unresponsive if there was a large volume of data flow through the rti/distlog Distributed Logger Topic. This issue has been resolved.

[RTI Issue ID ADMINCONSOLE-622]

## 4.8 Slow responsiveness and large memory growth when subscribing to Topic with large array

*Admin Console* may have experienced slowdowns and large memory growth when visualizing *Topic* data that contained a large array. The large array would have to appear within the first few fields of the type in order for this issue to occur. This problem has been resolved.

[RTI Issue ID ADMINCONSOLE-663]

## 4.9 IDL unavailable if type inherited through alias

If a type used inheritance through an alias (typedef), the equivalent IDL was not shown and an exception was logged. This problem has been resolved.

[RTI Issue ID ADMINCONSOLE-675]

## 4.10 IDL 'wchar' fields caused errors

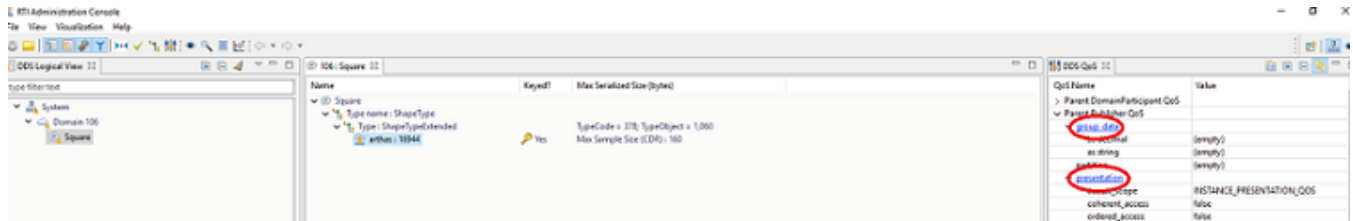
Attempting to visualize *Topic* data that contained a 'wchar' caused errors. This problem has been resolved; however, arrays and sequences of 'wchar' are still not supported (due to lack of support for this in the underlying DynamicData Java implementation).

## 4.11 Admin Console failed to use local API Reference HTML documentation when path to installation

[RTI Issue ID ADMINCONSOLE-682]

### 4.11 Admin Console failed to use local API Reference HTML documentation when path to installation directory contained spaces

*Admin Console* failed to use links to the local API Reference HTML documentation (from the DDS QoS panel) when the path to the installation directory contained spaces.



This issue has been resolved. Now *Admin Console* uses the local API Reference HTML documentation instead of the community portal API Reference, even when the path to the installation directory contains spaces.

[RTI Issue ID ADMINCONSOLE-688]

### 4.12 Ownership issues not always shown

Mismatches in the Ownership QoS policy were not shown in the DDS Logical, Physical, Domain Topic, Processes, and Health views when there was at least one *DataWriter* and *DataReader* with EXCLUSIVE ownership and one *DataWriter* and *DataReader* with SHARED ownership. This problem has been resolved.

[RTI Issue ID ADMINCONSOLE-695]

# Chapter 5 Known Issues

## 5.1 Preferences Dialog Shows Error Message

The Preferences dialog will show an error message when viewing the preference for XML -> XML Files -> Editor:

```
"org.eclipse.wst.sse.ui.preferences.editor not found."
```

This error message has no affect on functionality and will be removed in a future release.

[RTI Issue ID ADMINCONSOLE-199]

## 5.2 Limited to Single Instance of Admin Console on Mac OS X Platforms

On Mac OS X platforms, only one instance of *Admin Console* can be run at a time. This limitation is not present on other platforms.

[RTI Issue ID ADMINCONSOLE-403]

## 5.3 Limited Support for Keyed, Unbounded Sequences

There is limited support when using a data type that contains a field that is an unbounded sequence and that field participates in the key. The limitation is that only a subset of the total possible (2,147,483,647) sequence elements can be used. This limitation protects against high memory and CPU consumption by the application.

The limited number of fields chosen to represent the key can be seen in the Topic Data tab and when selecting data instances for the Time Chart.

[RTI Issue ID ADMINCONSOLE-399]

## 5.4 Additional Library Needed on Fedora 12 64-bit Systems

On Fedora 12 64-bit systems, before starting *Admin Console*, follow these steps:

1. Login as super user
2. Enter this command:

```
yum install libsoup
```

## 5.5 Interaction between Admin Console and RTI Recording Console

This issue only applies if you are using any version of *Admin Console* and *Recording Console* (which only exists before 6.0.0) at the same time, and you have configured *Admin Console* to join domain ID 99. In this scenario, do not use *Admin Console* to pause or disable any *Recording Console* services (their names begin with "RTI-Recorder-" or "RTI-Replay-"). Doing so may cause an error in *Recording Console*.

[RTI Issue ID RECORD-253]

## 5.6 Admin Console Incompatible with RTI Routing Service Configurations that use DomainParticipant Name QoS

This issue only occurs when using *Admin Console* with *RTI Routing Service* 5.2 or older.

*Admin Console* will not correctly display or administer instances of *RTI Routing Service* that have overridden the default DomainParticipant QoS participant\_name. These names are used to identify the process as *RTI Routing Service*. You may see error messages in *Admin Console's* log such as:

```
expecting process model : RoutingService : corresponding to instance handle : {X} : to be a
Routing Service instance when it is not
cannot add monitoring capabilities for the RoutingService since the model was not found for
instance handle : {X}
unable to find a DomainRoute named : {Domain Route name} : associated with RoutingService :
{Routing Service name}
unable to find a Session named : {Session name} : associated with RoutingService : {Routing
Service name} : and DomainRoute : {Domain Route name}
unable to find an AutoRoute named : {Auto Route name} : associated with RoutingService :
{Routing Service name} : and DomainRoute : {Domain Route name} : and Session : {Session name}
unable to find a Route named : {Route name} : associated with RoutingService : {Routing Service
name} : and DomainRoute : {Domain Route name} : and Session : {Session name}
```

[RTI Issue ID ADMINCONSOLE-270]

## 5.7 Admin Console Views Restored when Admin Console is Restarted

*Admin Console* will restore views (such as the Health view) each time the application is restarted. For example, if you closed the DDS Data Type view during the previous session, then it will be re-opened the next time you open *Admin Console*. (Previously, it would remain closed.) This behavior is a workaround

for an issue *Admin Console* is experiencing: without restoring the views, some of them would be hidden behind each other.

# Chapter 6 Third-Party Licenses

Portions of *RTI Administration Console* were developed using:

- Visualization Widget from Eclipse's Nebula project (<http://www.eclipse.org/nebula/widgets/visualization/visualization.php>), licensed under the Eclipse Public License.
- Apache Commons Lang from the Apache Software Foundation (<http://commons.apache.org/lang/>)
- Apache Commons Logging from the Apache Software Foundation (<http://commons.apache.org/logging/>)
- Apache Log4j from the Apache Software Foundation (<http://logging.apache.org/log4j/1.2/index.html>) Brief description: Logging API
- GlazedLists from (<http://www.glazedlists.com/>), licensed under the terms of GNU Lesser General Public License (LGPL)
- SWFObject from (<http://code.google.com/p/swfobject/>), licensed under the MIT License (MIT)
- Apache Software License: <http://www.apache.org/licenses/>

Additional information about Third-Party Content contained in the RTI product suite can be found in **RTI\_ConnextDDS\_3rdPartySoftware\_Tools\_Services.pdf**.

## 6.1 Apache License

Apache License

Version 2.0, January 2004

<http://www.apache.org/licenses/>

TERMS AND CONDITIONS FOR USE, REPRODUCTION, AND DISTRIBUTION



## 1. Definitions.

"License" shall mean the terms and conditions for use, reproduction, and distribution as defined by Sections 1 through 9 of this document. "Licensor" shall mean the copyright owner or entity authorized by the copyright owner that is granting the License.

"Legal Entity" shall mean the union of the acting entity and all other entities that control, are controlled by, or are under common control with that entity. For the purposes of this definition, "control" means (i) the power, direct or indirect, to cause the direction or management of such entity, whether by contract or otherwise, or (ii) ownership of fifty percent (50%) or more of the outstanding shares, or (iii) beneficial ownership of such entity.

"You" (or "Your") shall mean an individual or Legal Entity exercising permissions granted by this License.

"Source" form shall mean the preferred form for making modifications, including but not limited to software source code, documentation source, and configuration files.

"Object" form shall mean any form resulting from mechanical transformation or translation of a Source form, including but not limited to compiled object code, generated documentation, and conversions to other media types.

"Work" shall mean the work of authorship, whether in Source or Object form, made available under the License, as indicated by a copyright notice that is included in or attached to the work (an example is provided in the Appendix below).

"Derivative Works" shall mean any work, whether in Source or Object form, that is based on (or derived from) the Work and for which the editorial revisions, annotations, elaborations, or other modifications represent, as a whole, an original work of authorship. For the purposes of this License, Derivative Works shall not include works that remain separable from, or merely link (or bind by name) to the interfaces of, the Work and Derivative Works thereof.

"Contribution" shall mean any work of authorship, including the original version of the Work and any modifications or additions to that Work or Derivative Works thereof, that is intentionally submitted to Licensor for inclusion in the Work by the copyright owner or by an individual or Legal Entity authorized to submit on behalf of the copyright owner. For the purposes of this definition, "submitted" means any form of electronic, verbal, or written communication sent to the Licensor or its representatives, including but not limited to communication on electronic mailing lists, source code control systems, and issue tracking systems that are managed by, or on behalf of, the Licensor for the purpose of discussing and improving the Work, but excluding communication that is conspicuously marked or otherwise designated in writing by the copyright owner as "Not a Contribution."

"Contributor" shall mean Licensor and any individual or Legal Entity on behalf of whom a Contribution has been received by Licensor and subsequently incorporated within the Work.

2. Grant of Copyright License. Subject to the terms and conditions of this License, each Contributor hereby grants to You a perpetual, worldwide, non-exclusive, no-charge, royalty-free, irrevocable copyright license to reproduce, prepare Derivative Works of, publicly display, publicly perform, sublicense, and distribute the Work and such Derivative Works in Source or Object form.
3. Grant of Patent License. Subject to the terms and conditions of this License, each Contributor hereby grants to You a perpetual, worldwide, non-exclusive, no-charge, royalty-free, irrevocable (except as stated in this section) patent license to make, have made, use, offer to sell, sell, import, and otherwise transfer the Work, where such license applies only to those patent claims licensable by such Contributor that are necessarily infringed by their Contribution(s) alone or by combination of their Contribution(s) with the Work to which such Contribution(s) was submitted. If You institute patent litigation against any entity (including a cross-claim or counterclaim in a lawsuit) alleging that the Work or a Contribution incorporated within the Work constitutes direct or contributory patent infringement, then any patent licenses granted to You under this License for that Work shall terminate as of the date such litigation is filed.
4. Redistribution. You may reproduce and distribute copies of the Work or Derivative Works thereof in any medium, with or without modifications, and in Source or Object form, provided that You meet the following conditions:
  - (a) You must give any other recipients of the Work or Derivative Works a copy of this License; and
  - (b) You must cause any modified files to carry prominent notices stating that You changed the files; and
  - (c) You must retain, in the Source form of any Derivative Works that You distribute, all copyright, patent, trademark, and attribution notices from the Source form of the Work, excluding those notices that do not pertain to any part of the Derivative Works; and
  - (d) If the Work includes a "NOTICE" text file as part of its distribution, then any Derivative Works that You distribute must include a readable copy of the attribution notices contained within such NOTICE file, excluding those notices that do not pertain to any part of the Derivative Works, in at least one of the following places: within a NOTICE text file distributed as part of the Derivative Works; within the Source form or documentation, if provided along with the Derivative Works; or, within a display generated by the Derivative Works, if and wherever such third-party notices normally appear. The contents of the NOTICE file are for informational purposes only and do not modify the License. You may add Your own attribution notices within Derivative Works that You distribute, alongside or as an addendum to the NOTICE text from the Work, provided that such additional attribution notices cannot be construed as modifying the License.

You may add Your own copyright statement to Your modifications and may provide additional or different license terms and conditions for use, reproduction, or distribution of Your modifications, or for any such Derivative Works as a whole, provided Your use, reproduction, and distribution of the Work otherwise complies with the conditions stated in this License.

5. Submission of Contributions. Unless You explicitly state otherwise, any Contribution intentionally submitted for inclusion in the Work by You to the Licensor shall be under the terms and conditions of this License, without any additional terms or conditions. Notwithstanding the above, nothing herein shall supersede or modify the terms of any separate license agreement you may have executed with Licensor regarding such Contributions.
6. Trademarks. This License does not grant permission to use the trade names, trademarks, service marks, or product names of the Licensor, except as required for reasonable and customary use in describing the origin of the Work and reproducing the content of the NOTICE file.
7. Disclaimer of Warranty. Unless required by applicable law or agreed to in writing, Licensor provides the Work (and each Contributor provides its Contributions) on an "AS IS" BASIS, WITHOUT WARRANTIES OR CONDITIONS OF ANY KIND, either express or implied, including, without limitation, any warranties or conditions of TITLE, NON-INFRINGEMENT, MERCHANTABILITY, or FITNESS FOR A PARTICULAR PURPOSE. You are solely responsible for determining the appropriateness of using or redistributing the Work and assume any risks associated with Your exercise of permissions under this License.
8. Limitation of Liability. In no event and under no legal theory, whether in tort (including negligence), contract, or otherwise, unless required by applicable law (such as deliberate and grossly negligent acts) or agreed to in writing, shall any Contributor be liable to You for damages, including any direct, indirect, special, incidental, or consequential damages of any character arising as a result of this License or out of the use or inability to use the Work (including but not limited to damages for loss of goodwill, work stoppage, computer failure or malfunction, or any and all other commercial damages or losses), even if such Contributor has been advised of the possibility of such damages.
9. Accepting Warranty or Additional Liability. While redistributing the Work or Derivative Works thereof, You may choose to offer, and charge a fee for, acceptance of support, warranty, indemnity, or other liability obligations and/or rights consistent with this License. However, in accepting such obligations, You may act only on Your own behalf and on Your sole responsibility, not on behalf of any other Contributor, and only if You agree to indemnify, defend, and hold each Contributor harmless for any liability incurred by, or claims asserted against, such Contributor by reason of your accepting any such warranty or additional liability.

END OF TERMS AND CONDITIONS