

# **RTI Launcher**

**User's Manual**

**Version 6.0.1**



© 2020 Real-Time Innovations, Inc.

All rights reserved.

Printed in U.S.A. First printing.

March 2020.

## **Trademarks**

RTI, Real-Time Innovations, Connex, NDDS, the RTI logo, lRTI and the phrase, “Your Systems. Working as one,” are registered trademarks, trademarks or service marks of Real-Time Innovations, Inc. All other trademarks belong to their respective owners.

## **Copy and Use Restrictions**

No part of this publication may be reproduced, stored in a retrieval system, or transmitted in any form (including electronic, mechanical, photocopy, and facsimile) without the prior written permission of Real-Time Innovations, Inc. The software described in this document is furnished under and subject to the RTI software license agreement. The software may be used or copied only under the terms of the license agreement.

This is an independent publication and is neither affiliated with, nor authorized, sponsored, or approved by, Microsoft Corporation.

The security features of this product include software developed by the OpenSSL Project for use in the OpenSSL Toolkit (<http://www.openssl.org/>).

## **Technical Support**

Real-Time Innovations, Inc.

232 E. Java Drive

Sunnyvale, CA 94089

Phone: (408) 990-7444

Email: [support@rti.com](mailto:support@rti.com)

Website: <https://support.rti.com/>

# Contents

---

## **Chapter 1 Introduction**

1.1 Paths Mentioned in Documentation .....	1
--	---

## **Chapter 2 Using RTI Launcher**

2.1 Starting Launcher .....	3
2.2 License Management .....	4
2.2.1 Setting the License File .....	4
2.3 Launcher's Tabs .....	6
2.3.1 Learn Tab .....	9
2.3.2 Tools Tab .....	9
2.3.3 Services Tab .....	10
2.3.4 Utilities Tab .....	13
2.3.5 Configuration Tab .....	16
2.3.5.1 Preferences Dialog .....	17
2.3.6 What's New Tab .....	18
2.3.7 Labs Tab .....	19
2.3.8 Ecosystem Tab .....	19
2.3.9 User Tab .....	20
2.4 Help .....	20
2.5 Installing Target Libraries and RTI Components .....	21
2.6 Troubleshooting with Launcher .....	22

## **Chapter 3 Configuring Launcher**

3.1 Launcher Tabs and Their Associated XML Files .....	24
3.1.1 Configuration file .....	25
3.2 How Launcher Finds Images .....	26
3.3 Example: Adding a Button to Launcher's User Panel .....	26
3.4 Example: Adding a Tab to Launcher .....	29

# Chapter 1 Introduction

*RTI® Launcher* is a graphical application that allows you to install, configure, and run *RTI Connex® DDS* components. It automatically detects which RTI components are installed and enables their launch buttons, providing a convenient graphical interface to the configuration and run-time parameters.

You can use *Launcher* to install new components or target platforms into the current *RTI Connex* installation, see what is already installed, navigate to the documentation and web-based resources, create new source-code projects (via its integration with *rtiddsgen*), and run all the *RTI Connex* tools and command-line utilities.

*Launcher* is intended to be your “window” and “management console” for all your *RTI Connex* products. Keep it handy and use it as the “launch” interface whenever you need to start any RTI tool or service.

In addition, you can customize *Launcher* to run any program installed in your system, such as third-party tools that work with *RTI Core Libraries*, or commonly used editors. This can be easily done by changing the XML configuration file in the **resource/app/app\_support/launcher/panels** subdirectory of your *Connex DDS* installation directory.

## 1.1 Paths Mentioned in Documentation

The documentation refers to:

- **<NDDSHOME>**

This refers to the installation directory for *RTI® Connex® DDS*. The default installation paths are:

- macOS® systems:  
**/Applications/rti\_connex\_dds-6.0.1**
- Linux systems, non-*root* user:  
**/home/<your user name>/rti\_connex\_dds-6.0.1**

- Linux systems, *root* user:  
**/opt/rti\_connexdds-6.0.1**
- Windows® systems, user without Administrator privileges:  
**<your home directory>\rti\_connexdds-6.0.1**
- Windows systems, user with Administrator privileges:  
**C:\Program Files\rti\_connexdds-6.0.1**

You may also see **\$NDDSHOME** or **%NDDSHOME%**, which refers to an environment variable set to the installation path.

Wherever you see **<NDDSHOME>** used in a path, replace it with your installation path.

**Note for Windows Users:** When using a command prompt to enter a command that includes the path **C:\Program Files** (or any directory name that has a space), enclose the path in quotation marks. For example:

```
"C:\Program Files\rti_connexdds-6.0.1\bin\rtiddsgen"
```

Or if you have defined the **NDDSHOME** environment variable:

```
"%NDDSHOME%\bin\rtiddsgen"
```

- **<path to examples>**

By default, examples are copied into your home directory the first time you run *RTI Launcher* or any script in **<NDDSHOME>/bin**. This document refers to the location of the copied examples as **<path to examples>**.

Wherever you see **<path to examples>**, replace it with the appropriate path.

Default path to the examples:

- macOS systems: **/Users/<your user name>/rti\_workspace/6.0.1/examples**
- Linux systems: **/home/<your user name>/rti\_workspace/6.0.1/examples**
- Windows systems: **<your Windows documents folder>\rti\_workspace\6.0.1\examples**

Where 'your Windows documents folder' depends on your version of Windows. For example, on Windows 10, the folder is **C:\Users\<your user name>\Documents**.

Note: You can specify a different location for **rti\_workspace**. You can also specify that you do not want the examples copied to the workspace. For details, see *Controlling Location for RTI Workspace and Copying of Examples* in the *RTI ConnexDDS Installation Guide*.

# Chapter 2 Using RTI Launcher

## 2.1 Starting Launcher

To start *Launcher*:

- **On a macOS system:**

If you installed *Connex DDS* in the **/Applications** directory, the LaunchPad utility should show *RTI Launcher* in the *Connex DDS* folder (**rti\_connex\_dds-version**). Click on it to open *Launcher*.

- **On a UNIX-based system:**

You must have a graphical environment (such as X11, GNOME or KDE) running.

- Open a command prompt and navigate to the *Connex DDS* installation directory. Run the script **bin/rtilauncher**.
- Alternatively, use your browser to navigate to your *Connex DDS* installation directory's **bin** directory and double-click **rtilauncher**.

- **On a Windows system:**

There are three ways to run *RTI Launcher* on a Windows system:

- In the Start menu under **All Programs**, find the entry called *RTI Connex DDS <version>*. Underneath there you will see **RTI Launcher <version>**. Select it to start *Launcher*.
- Use Windows Explorer to navigate to your *Connex DDS* installation directory's **bin** directory. For example, **C:\Program Files\rti\_connex\_dds-version\bin**. Double-click **rtilauncher.bat**.
- From a command prompt, navigate to **<NDDSHOME>/bin** and run **rtilauncher.bat**.

## 2.2 License Management

*Launcher* itself does not require a license file. However, some of the *Connex DDS* components may require a license file. *Launcher* will aid you in making sure a license file can be found by these applications when started from *Launcher*. *Launcher* will look for the license file named **rti\_license.dat** in three locations in the order specified below:

- The path indicated by the **RTI\_LICENSE\_FILE** environment variable. The file does *not* need to be called **rti\_license.dat** to use this method.
- The **RTI user home**. This is the **rti\_workspace/version** directory in the user's home folder. The specific location depends on the operating system.
- The Connex DDS **installation directory**. This is top-level directory where you installed the *Connex DDS* bundle.

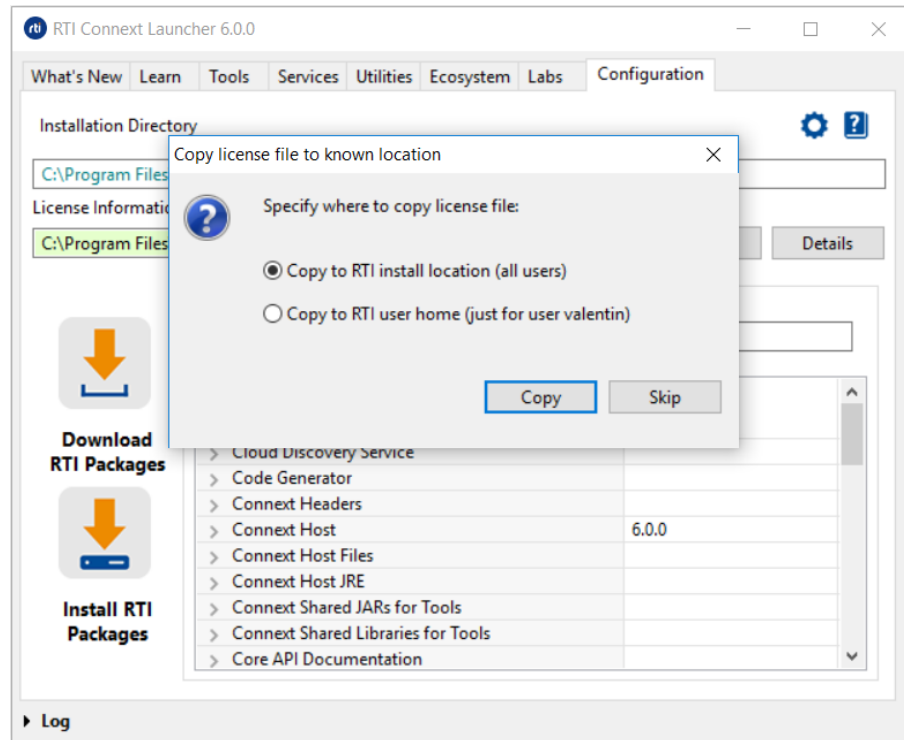
For example, if a license-managed version of *RTI Connex DDS Professional* is installed in **C:\Program Files\rti\_connex\_dds-version** on a Windows system and there is no **RTI\_LICENSE\_FILE** environment variable set, *Launcher* will first look for **C:\Users\your user name\Documents\rti\_workspace\version\rti\_license.dat** (RTI user home). Then, if not found, it will look for **C:\Program Files\rti\_connex\_dds-version\rti\_license.dat**.

### 2.2.1 Setting the License File

Some of *Launcher*'s tools may be license-managed. In this case, if *Launcher* has no knowledge of a valid license file, those tools will be grayed out and won't work until a valid license is provided. A warning message will be shown to indicate that the license file can not be found.

When you have a valid license, there are a few ways to tell *Launcher* about the license file:

- Use the *Launcher* Configuration tab's **Choose** button. This will open a file chooser dialog that will let you navigate to the license file. After choosing the file, *Launcher* will prompt you with the following dialog:



You have three choices:

- **Copy to RTI install location (all users):** The chosen license file will be copied to the *Connex DDS* installation directory, with the name **rti\_license.dat**. *Launcher* will use this license file not only for the current execution and the current user, but for subsequent executions by any user in the system with access to the *RTI Core Libraries* installation. Note that if you have installed into a system directory, selecting this option may require system privileges.
- **Copy to RTI user home (just for user <user>):** The chosen license file will be copied to the current user's **rti\_workspace/<version>** directory. The license file will thus only be visible for the current user in subsequent executions of *Launcher*.
- **Skip:** The chosen license file will be applied by *Launcher* only for the current execution of the tool. It will not be automatically detected by the tool in subsequent executions.
- Copy the file manually to one of the aforementioned locations where *Launcher* will search by default, and name the file **rti\_license.dat**. As mentioned before, if the RTI license file is copied to the RTI user home, it will only be visible for this user in subsequent executions of the tool. When the file is copied to the RTI install location directly, it will be visible for all users with access to that directory.

The file may be copied both when *Launcher* has already been started or when it is offline. If the license file is copied while *Launcher* is executing, *Launcher* will detect the change automatically and apply the license to the UI.



- Set the **RTI\_LICENSE\_FILE** environment variable with the path to the license file. When setting this variable, not only *Launcher* but all the RTI applications will use the license file environment variable when executing.

Notice that when copied to one of the known locations, all RTI applications will also detect the license file.

After successfully setting a license file with *Launcher*, all the tools that were disabled because of the license will become available and usable.

## 2.3 Launcher's Tabs

*Launcher* has a Graphical User Interface with tabs for different application categories. The contents of the tabs are XML-defined. If a tab contains no entries (buttons), or none of the applications in a tab are supported on your platform, that tab will not appear in *Launcher*.

There are five tabs that are always visible to the user:

- [2.3.1 Learn Tab on page 9](#)
- [2.3.2 Tools Tab on page 9](#)
- [2.3.3 Services Tab on page 10](#)
- [2.3.4 Utilities Tab on page 13](#)
- [2.3.5 Configuration Tab on page 16](#)

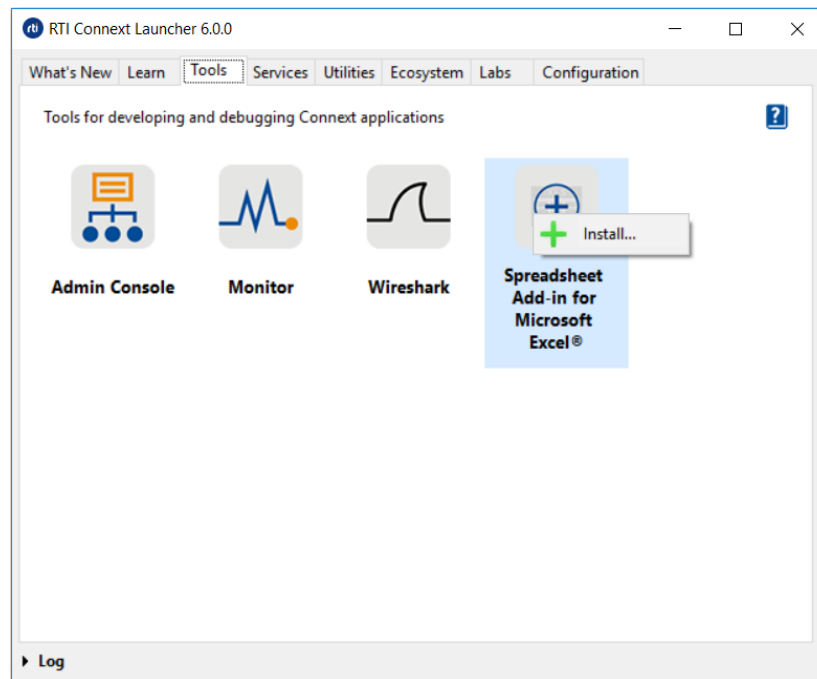
*Launcher* also includes other tabs, which may or may not be visible.

- [2.3.6 What's New Tab on page 18](#)
- [2.3.7 Labs Tab on page 19](#)
- [2.3.8 Ecosystem Tab on page 19](#)
- [2.3.9 User Tab on page 20](#)

**Note:** All the tabs may or may not be visible if *Launcher* cannot find the resources needed to create the tab. For instance, if the **tools** folder is missing—or if there is a **tools** folder but no buttons configured inside it—there will be no Tools tab. See [3.1 Launcher Tabs and Their Associated XML Files on page 24](#) for details. You can also add new tabs to *Launcher*. See [3.4 Example: Adding a Tab to Launcher on page 29](#).

To start one of the applications in a tab, click on the application's button. Some applications will launch directly, such as *RTI Admin Console*. Other applications, like the ones in the Services or Utilities tab, will pop-up an application-specific dialog. This dialog allows you to configure the settings to run the application and then execute it.

Right-clicking (or Command-Click on macOS systems) a button will open a context menu with additional information and options:

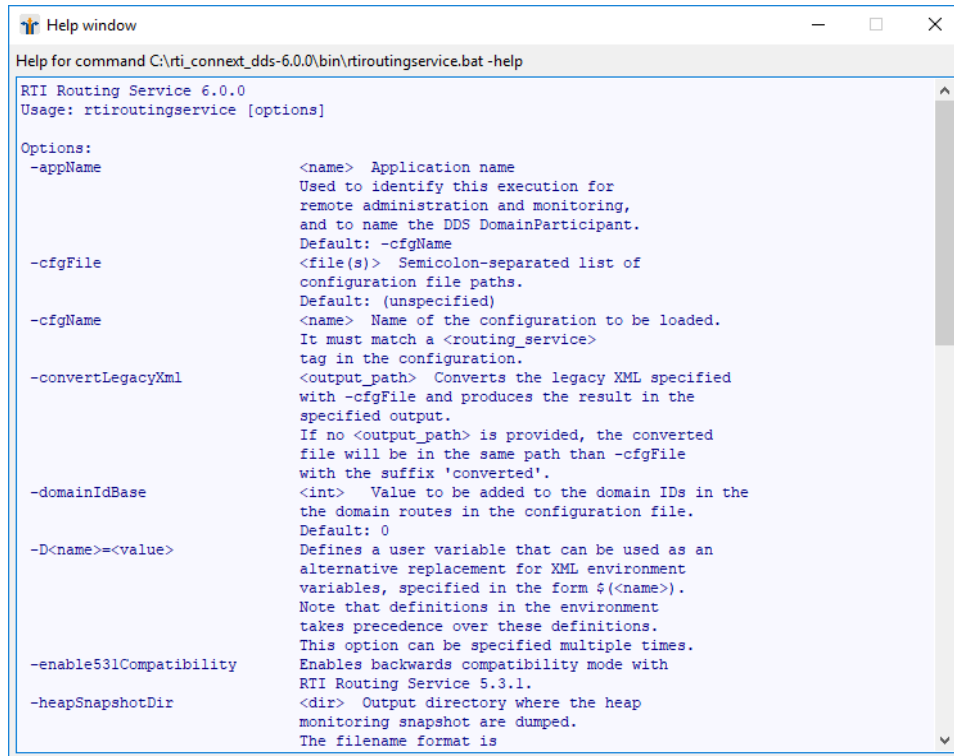


The context menu may vary for every tool, but in general, the options are:

- **Install/Uninstall:** This option installs the tool if it is not yet installed, or uninstalls it if it is already installed.
- **View command history:** *Launcher* keeps track of all the successful command executions in the current *Launcher* session. When you click this menu item, it will open up the application's Command History dialog, which shows the command that was executed, when it was launched, and the working directory from where it was launched:

Timestamp	Command	Working Directory
Dec 4, 2018 5:39:38 PM	C:\rti_connex_ddc-6.0.0\bin\rtiadmincons...	default

- **Command help:** Some applications provide usage notes regarding calling parameters (services, utilities, etc.). For those applications, this menu will show the available options. For example:



- **Documentation:** These options link to official RTI documentation for the tool, with the format: Document Name (Format (PDF or HTML), Location (local or on-line)).

If a tool is not installed or cannot be used (due to an expired license, for instance), a different icon will appear and the button will not work.

*Launcher* automatically detects the presence of the applications in various ways. In the majority of cases, *Launcher* looks for installed applications in `<NDDSHOME>/bin`. For other applications, it looks in the Windows Registry. On Linux systems, Wireshark is found by using the UNIX *which* command.

Not all tools are available on all platforms. For example, *RTI Spreadsheet Add-in for Microsoft Excel* is only available on Windows systems. On non-Windows systems, its button still appears but will not work.

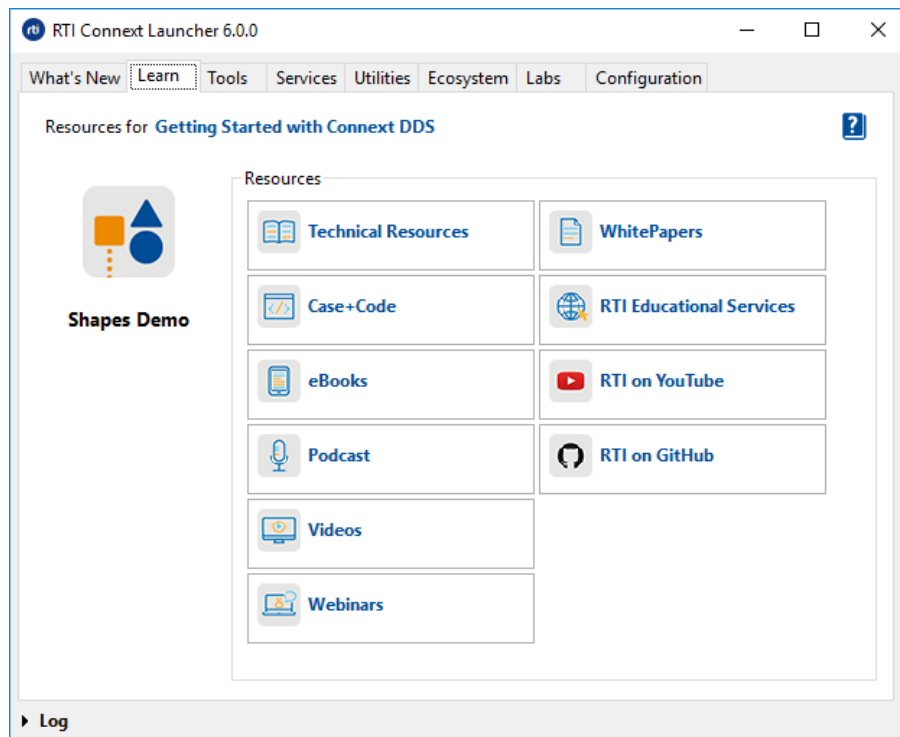
**Note:** Some applications in *Launcher* open a command prompt terminal. Whenever *Launcher* opens a command prompt terminal, it removes the content of the following environmental variables in order to successfully open some services:

- LD\_LIBRARY\_PATH on Linux systems
- DYLD\_LIBRARY\_PATH on macOS systems

## 2.3.1 Learn Tab

The Learn tab contains a broad range of technical resources to learn about the *RTI Connex DDS* product line and its underlying Object Management Group (OMG) Data Distribution Service (DDS) technology. The Learn tab includes the following:

- **Shapes Demo** demonstrates *Connex DDS* capabilities by publishing and subscribing to colored moving shapes.
- **Resources** contains some useful resources to links to learn about DDS technology.

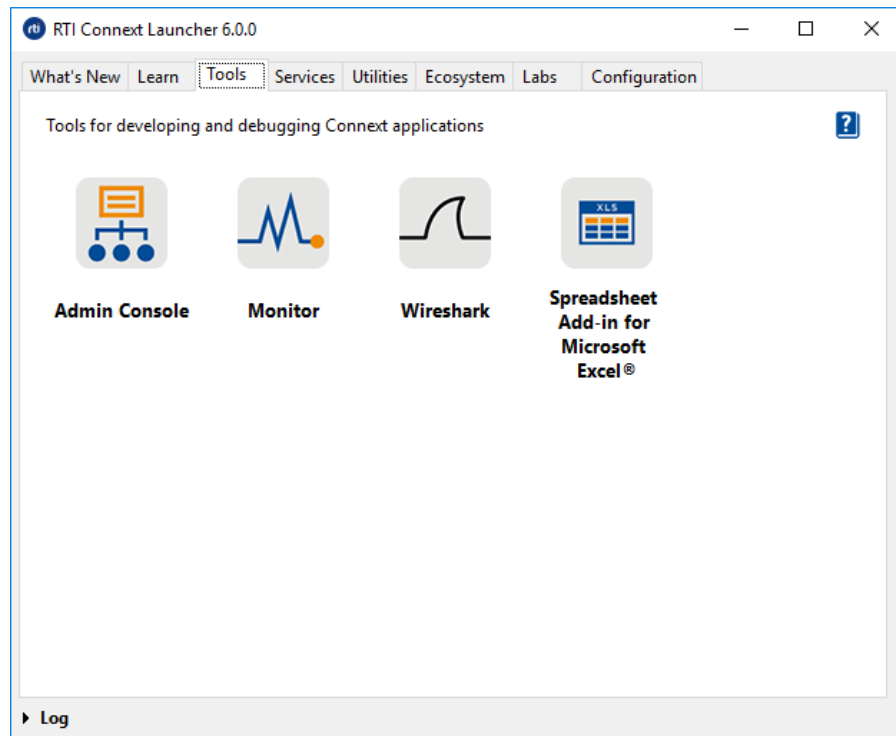


## 2.3.2 Tools Tab

The Tools tab contains applications that can be run directly, without requiring any additional application-specific setup. The Tools tab includes the following applications:

- **Admin Console** is a centralized tool for administering, supervising, and visualizing your distributed system. It provides control over RTI services such as *RTI Routing Service* and *RTI Recording Service*, offers a centralized way to receive and view log messages, detects configuration errors including type and QoS mismatches, and visualizes data. You can subscribe to the topics in the system to see the data being published in real time.
- **Monitor** provides a graphical view to the internal configuration and operation of *Connex DDS* applications, including QoS and detailed statistics on connections, traffic, errors, and resource usage.

- **Wireshark** is a network packet analyzer. It can view and capture data packets in an RTI network, dissect them, and graph the output for easy analysis.
- **Spreadsheet Add-in for Microsoft Excel®** can read and write data from Microsoft Excel spreadsheets. It updates the Excel data in real-time and can perform computations or create graphics with the data.



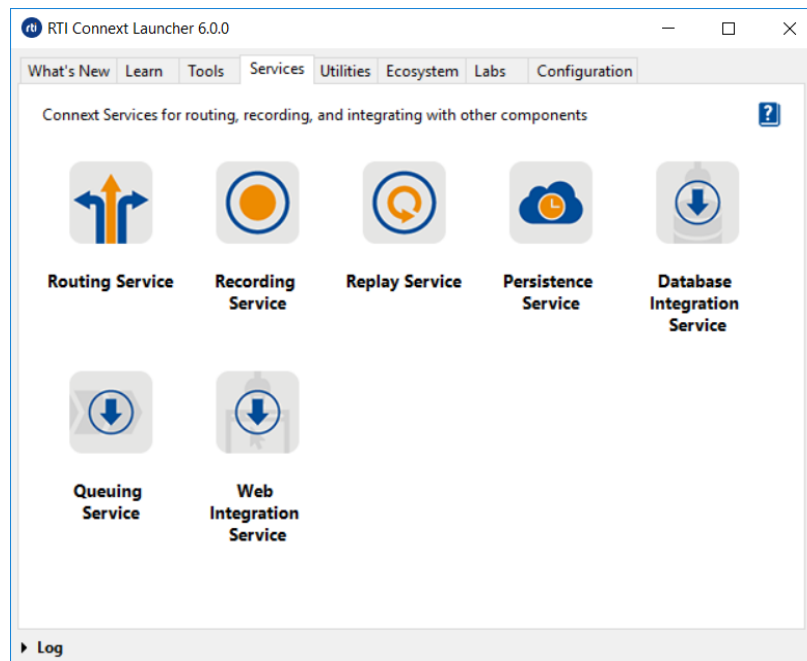
### 2.3.3 Services Tab

The Services tab provides buttons and dialogs to run RTI infrastructure services that require application-specific setup. The Services tab includes the following applications:

- **Routing Service** integrates disparate and geographically dispersed systems. It scales *Connex DDS* applications across domains, LANs and WANs, including firewall and NAT traversal. It also supports *Connex DDS*-to-*Connex DDS* bridging by allowing you to make transformations in the data along the way.
- **Recording Service** records real-time data without having prior knowledge of the data-types or topics in the system. (This service is also available by using Recording Console in the Tools tab.)
- **Replay Service** replays recorded data by injecting it back into DDS. You can change data rates and QoS settings. (This service is also available by using Recording Console in the Tools tab.)
- **Persistence Service** saves data from *Connex DDS* publishing applications to memory or permanent storage, so it can be delivered to subscribing applications that join the system at a later time—even if

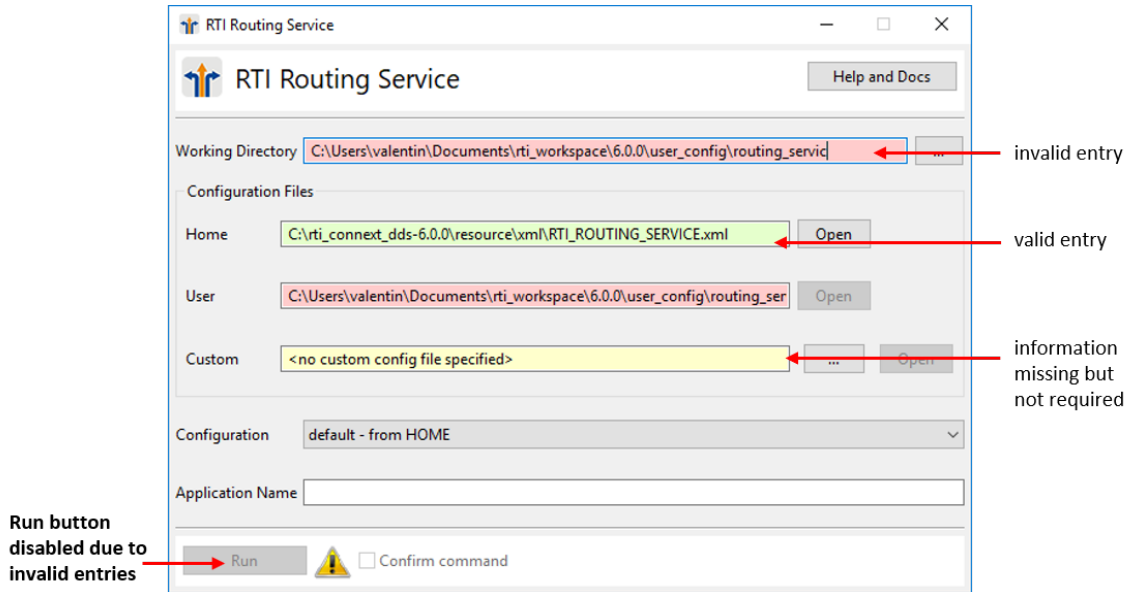
the publishing application has already terminated. Data can be persisted to files or an external database.

- **Database Integration Service** provides bidirectional integration between *Connex DDS* and a database (Microsoft SQL Server, PostgreSQL, or MySQL).
- **Queuing Service** provides a queue (exactly-once) communication pattern in which each sample will be delivered to exactly one QueueConsumer. If there are no QueueConsumers available when the sample is sent, the sample will be stored until a QueueConsumer is available to process the sample. This pattern is very useful in load-balancing applications.
- **Web Integration Service** provides a simple, generic, standards-based interface that provides a transparent bridge between web-based services (HTTP/HTTPS) and unmodified *Connex DDS* applications.



Dialogs in the Services and Utilities tabs also include validation for wrong parameters or paths. Text fields are highlighted with different colors depending on their validation status:

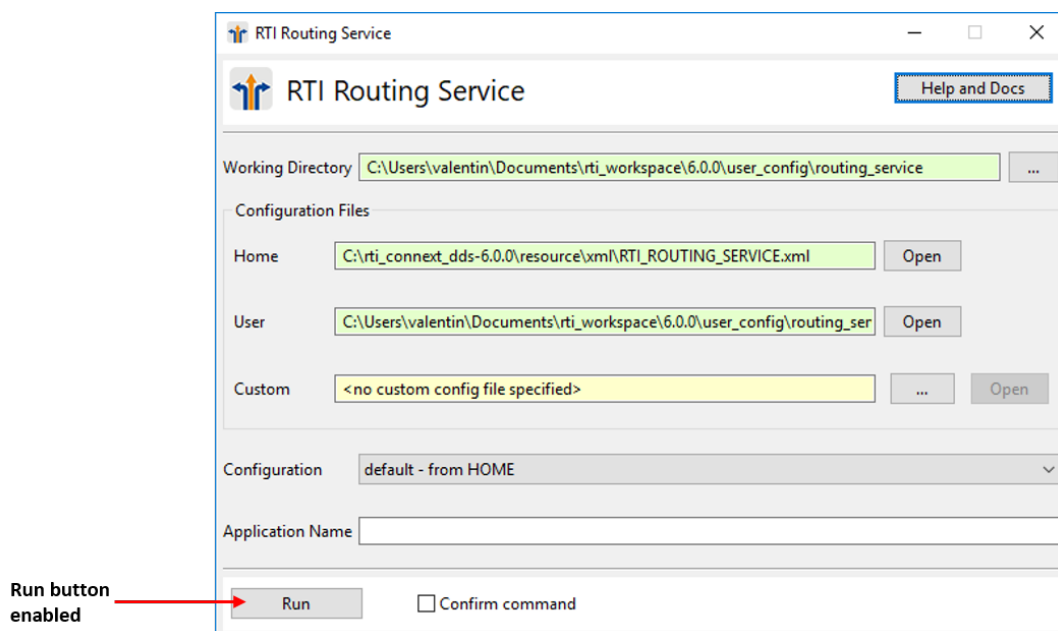
- Green indicates that the field has a valid entry.
- Yellow indicates that the information is missing, but not required.
- Red means the field contains invalid values (for example, a missing file).



When you are done configuring the service, click on the **Run** button to run the service. If the dialog has some invalid entries, the **Run** button will be disabled and a warning icon will appear next to it.

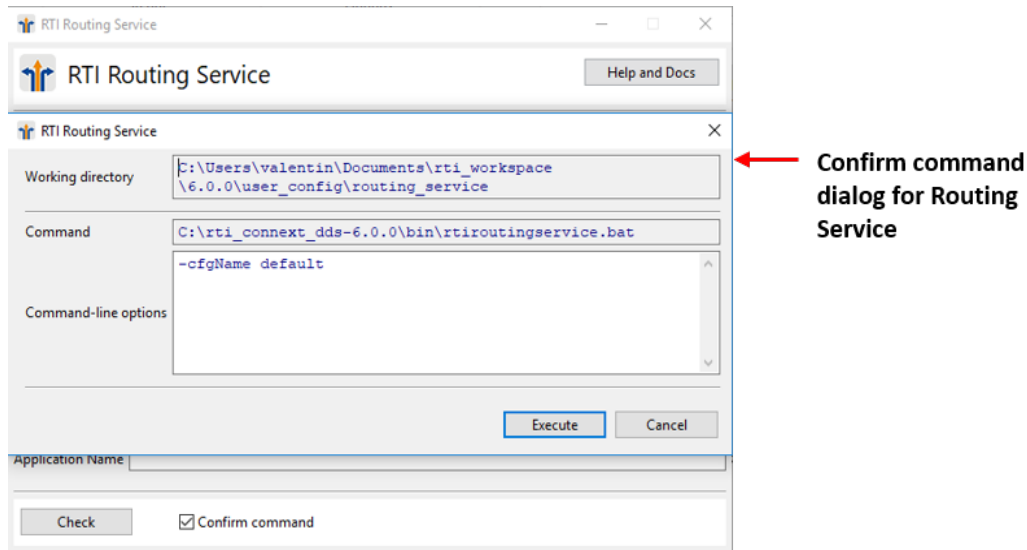
**Note:** The **Run** button will be available if at least one configuration file is valid. *Launcher* validates all the inputs again when you click on the **Run** button.

The warning icon's pop-up will show you why the dialog is invalid.



If you want to preview the command that will be used for execution, check the **Confirm command** checkbox. If the checkbox is checked, the name of the **Run** button will change to **Check**. If you click on **Check**, a pop-up dialog will show the command and command-line options that will be used and the

working directory from which the command will be run. The command-line options map to the fields you entered in the previous dialog (for example, the RTI Routing Service dialog above). You can add new command-line options or remove existing ones. See the service's documentation for more information about its full set of command-line options.



If the execution is successful, this command will be stored in the Command History of the service. See [2.3 Launcher's Tabs on page 6](#) for more about viewing command history.

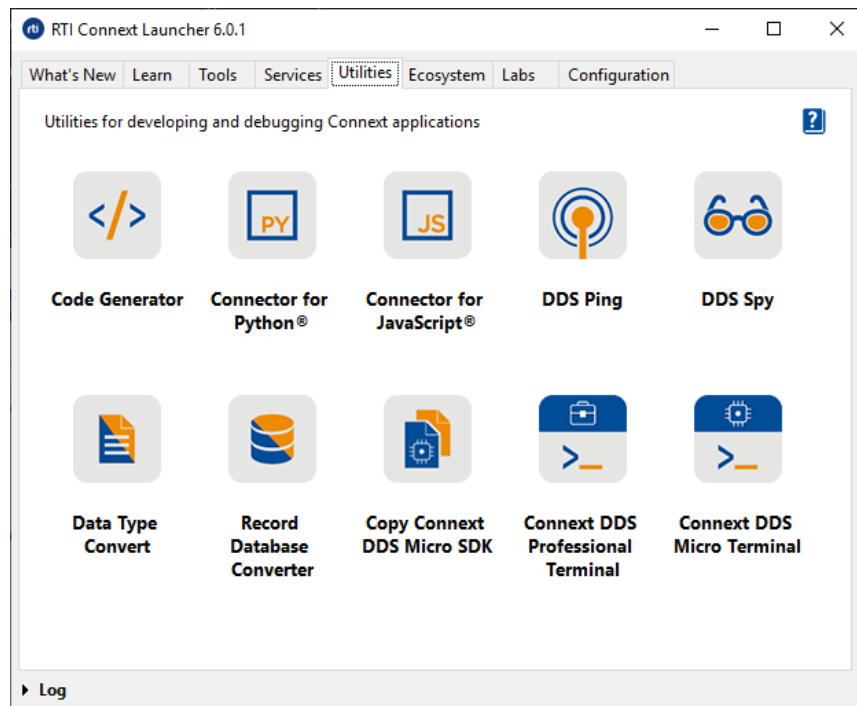
## 2.3.4 Utilities Tab

The Utilities tab contains helper applications provided with *Connext DDS* to assist you when testing, designing, or inspecting your DDS system.

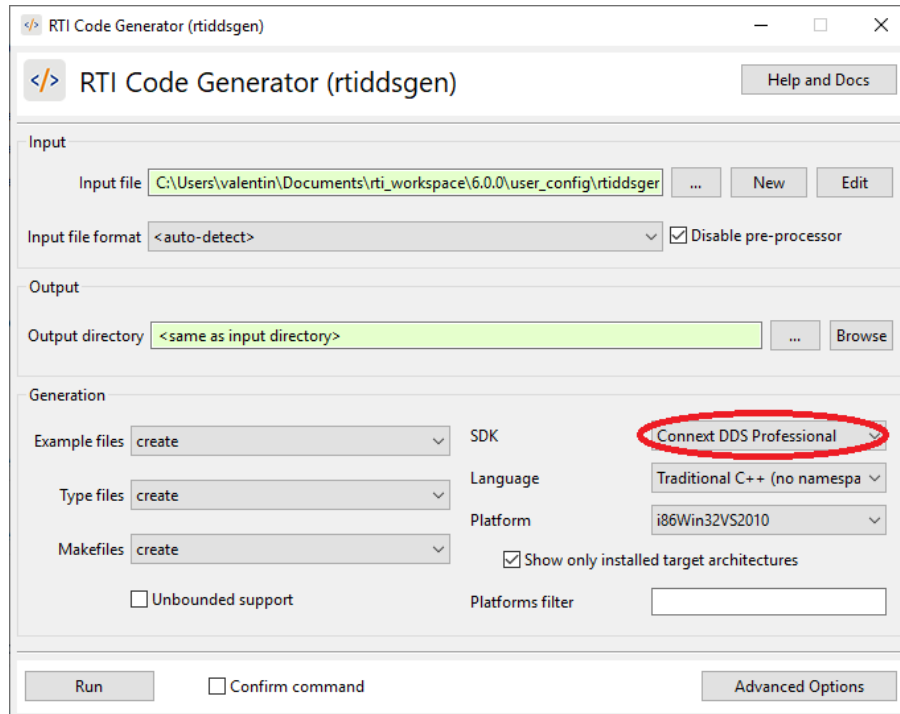
- **Code Generator**, also known as *rtiddsgen*, generates the code to serialize and deserialize application data on the wire from an IDL (or XML) description of the data-type. It also generates example code and makefiles/project files so you can quickly build a working application.
- **Connector for Python®** provides an easy way to write applications that publish and subscribe to the *Connext DDS* databus in Python and other languages.
- **Connector for JavaScript®** provides an easy way to write applications that publish and subscribe to the *Connext DDS* databus in JavaScript and other languages.
- **DDS Ping**, also known as *rtiddsping*, publishes (and subscribes to) DDS ping messages to test system connectivity.
- **DDS Spy**, also known as *rtiddsspy*, can subscribe to any DDS Topic and print out all the data being published.
- **Data Type Convert** converts data-type formats between IDL and XML.



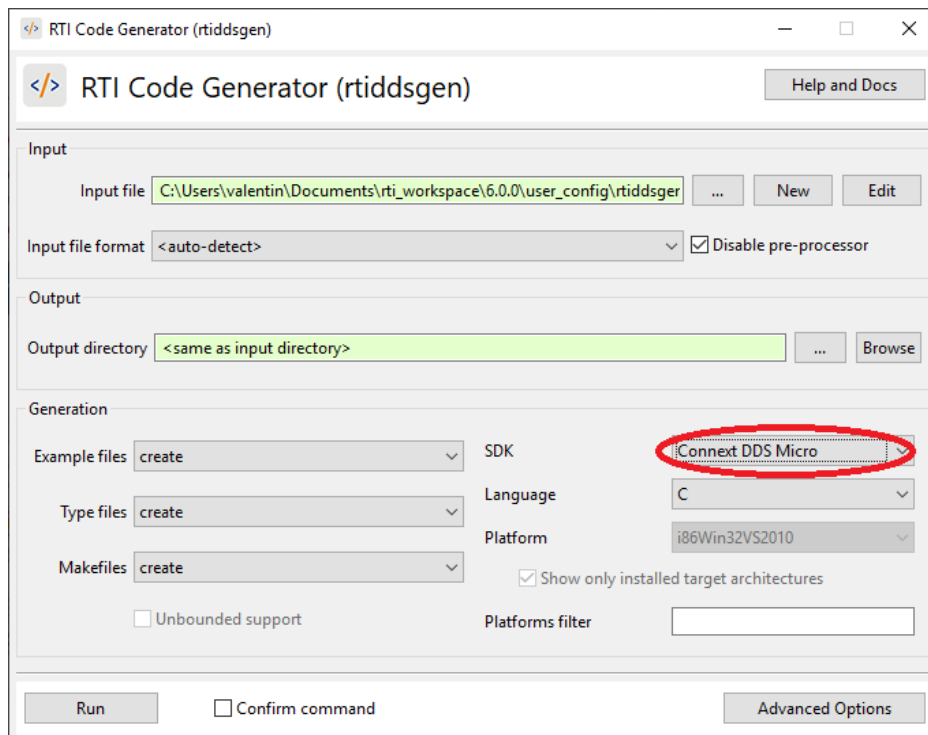
- **Record Database Converter** converts database files recorded by *Recorder* into readable, commonly accepted formats such as CSV, XML, and HTML.
- **Copy Connex DDS Micro SDK** copies the *Connex DDS Micro* SDK (source code + code generator) to a specified directory. The context menu also allows you to copy the latest version of *Connex DDS Micro* that has been installed, or to copy the source path of the latest version of *Connex DDS Micro* (the path where the SDK was copied, or the original folder if the SDK has never been copied).
- **Connex DDS Professional Terminal** opens a terminal window configured with the environment variables necessary for building *Connex DDS Professional* and *Connex DDS Secure* applications.
- **Connex DDS Micro Terminal** opens a terminal window configured with the environment variables necessary for building *Connex DDS Micro* and *Connex DDS Micro Secure* applications.

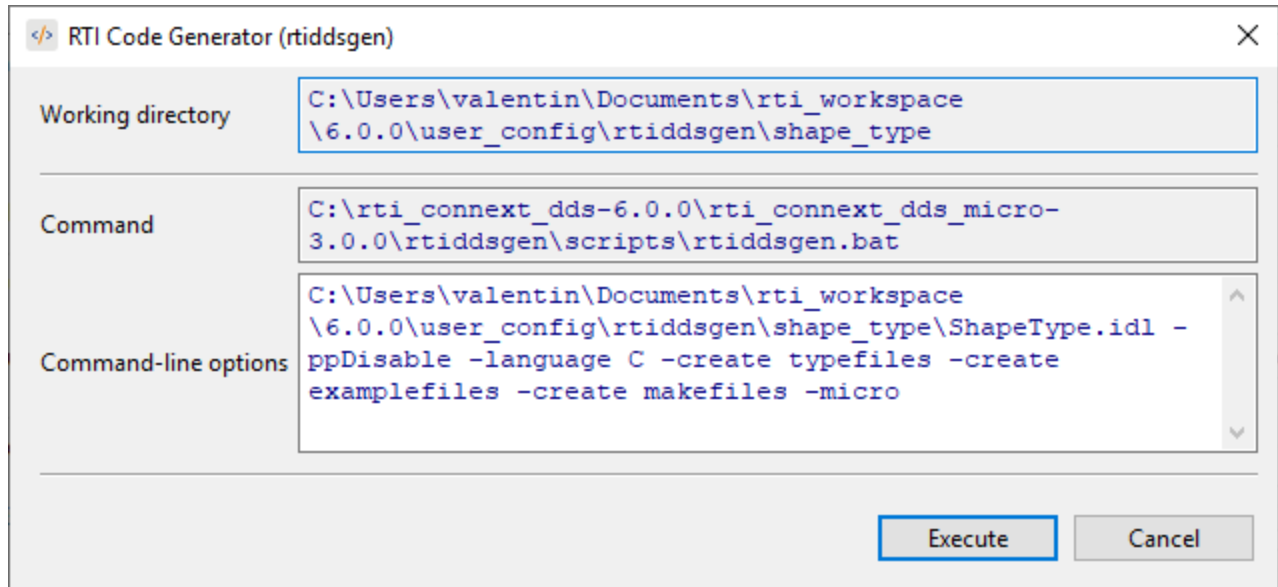


When you click on a utility button, a configuration dialog will pop up. Every utility has a different dialog, customized for its own needs. For example, the Code Generator dialog looks like this:



The Code Generator dialog can generate code for *Connex DDS Professional* or *Connex DDS Micro*. Any options that are not supported when generating code for *Micro* will be disabled when the dialog is configured for *Micro* (that is, when **Connex DDS Micro** is selected in the drop-down menu). In this case, *Launcher* will automatically add **-micro** to the list of command-line options.

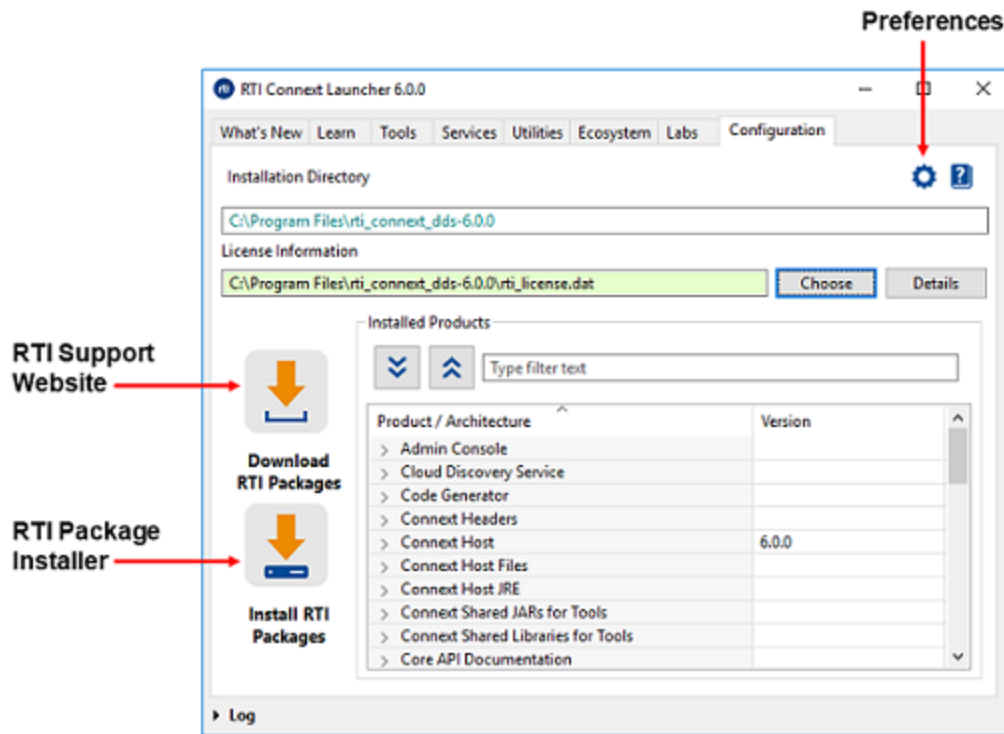




## 2.3.5 Configuration Tab

The Configuration tab provides general information regarding the current *RTI Connex*t installation. This tab:

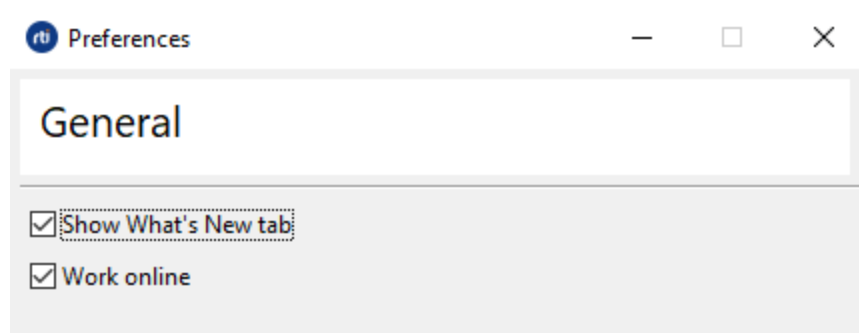
- Displays the current installation directory for *RTI Connex*t.
- Displays and allows changes to the license file. A license may not be necessary depending on the bundle installed. *Launcher* detects the need for a license file on a per-product basis.
- Displays a table with the installed products and libraries, and their installed versions. This table can be filtered by using a 'Filter' text field. The table can also be fully expanded/collapsed by using the two buttons next to the Filter field.
- Provides access to the RTI Package Installer through the **Install RTI Packages** button, to install additional components and libraries into an existing *Connex*t DDS installation.
- Provides access to the RTI Support website via **Download RTI Packages**.
- Provides access to the **Preferences** dialog.



### 2.3.5.1 Preferences Dialog

This dialog is used to configure general settings in *Launcher*:

- Hide or show the What's New tab.
- "Work online" means that *Launcher* will get the latest blog posts or news from the RTI Website when displaying the What's New tab. Disabling this option means *Launcher* will use local content that was stored when you last accessed the internet (when you downloaded the current release, or the last time the buttons were clicked and the content was stored from the internet). The local content is stored in `rti_workspace/version/user_config/launcher/rss`.



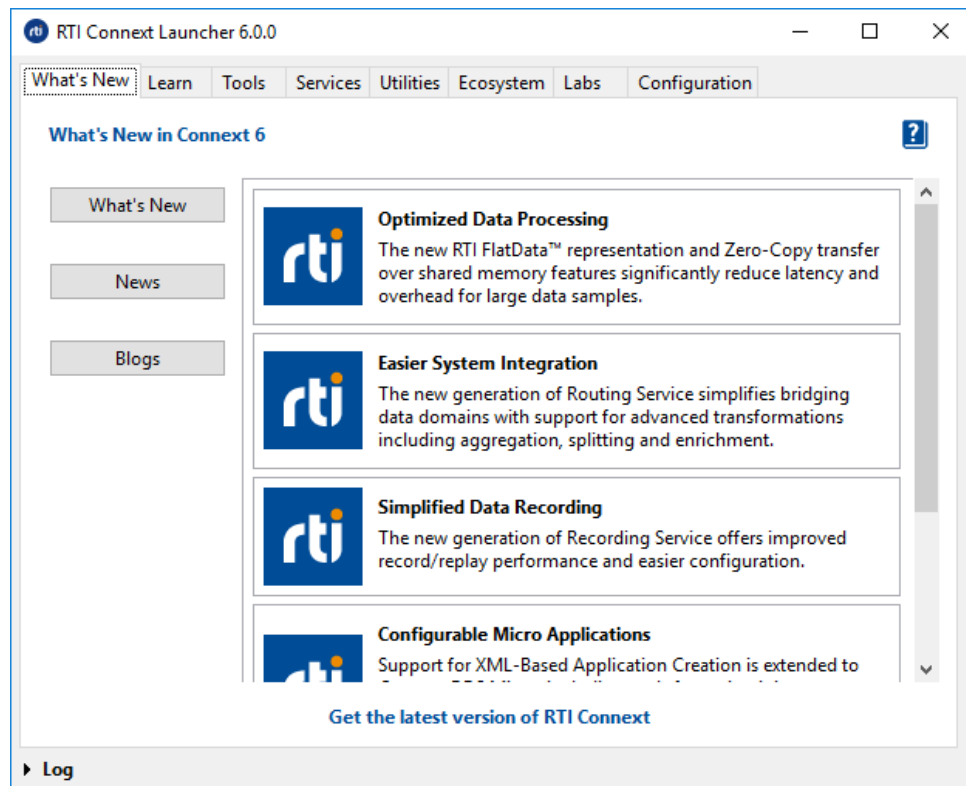
The **Preferences** settings are stored inside the file **launcher.properties**, in `rti_workspace/version/user_config/launcher`.

## 2.3.6 What's New Tab

The What's New tab includes three different buttons used to configure the content of this tab:

- **What's New** shows a brief summary of the new features in the current version of *RTI Connex DDS Professional*.
- **News** shows the latest news from <https://www.rti.com/news>.
- **Blogs** shows the latest blog posts from <https://www.rti.com/blog>.

This tab requires an internet connection to show the latest news and blog posts from the RTI website. *Launcher* updates this content each time the buttons are clicked, as long as "Work online" is checked in the **Preferences** dialog. See [2.3.5.1 Preferences Dialog on the previous page](#) for more information.



**Note:** You can hide this tab by unchecking the option "Show What's New tab" in the Preferences dialog. You can also configure Launcher to not require an internet connection by unchecking the option "Work online." See [2.3.5.1 Preferences Dialog on the previous page](#) for more information on these options.

## 2.3.7 Labs Tab

This tab is reserved for RTI applications that are experimental. It may be empty in some releases and therefore not shown at all.

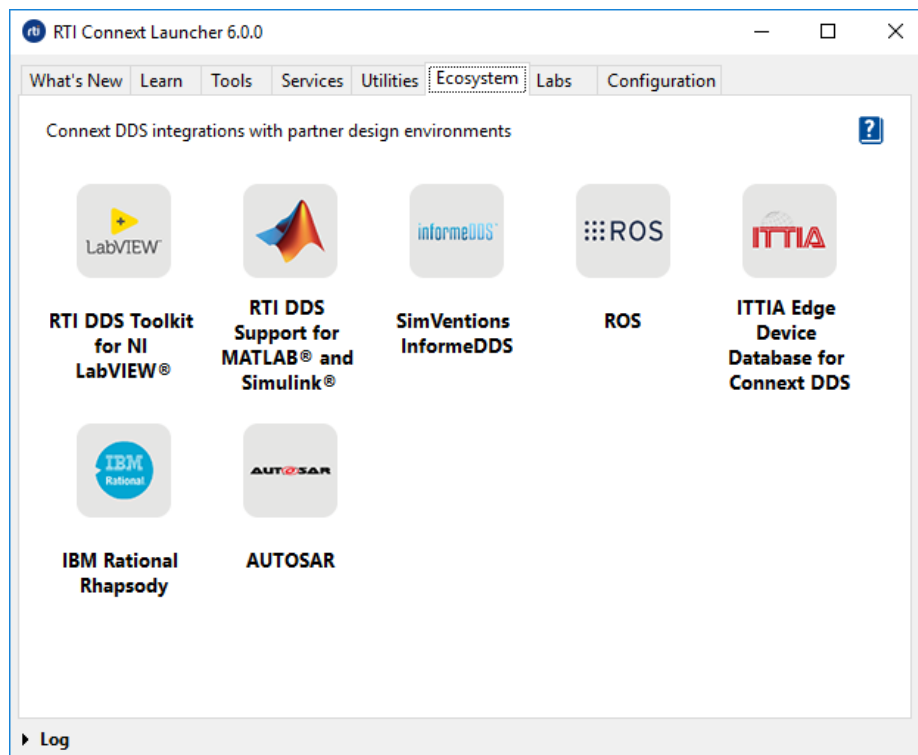
The XML files that define this tab are in the RTI workspace in the user's home folder: **rti\_workspace/<version>/user\_config/launcher/panels/labs/**.

You can find experimental applications on our Community Portal (<https://community.rti.com>). Visit it and download the new applications. Most of them will also provide XML snippets to be added to the *Launcher* configuration file that will allow you to run the new applications from *Launcher* just as you can run the other *Connex* DDS applications.

## 2.3.8 Ecosystem Tab

This tab is reserved for applications from RTI's partners. For information about RTI's strategic partners, see the RTI Partners website: <https://www.rti.com/partners>. This tab may be empty in some releases and therefore not shown at all.

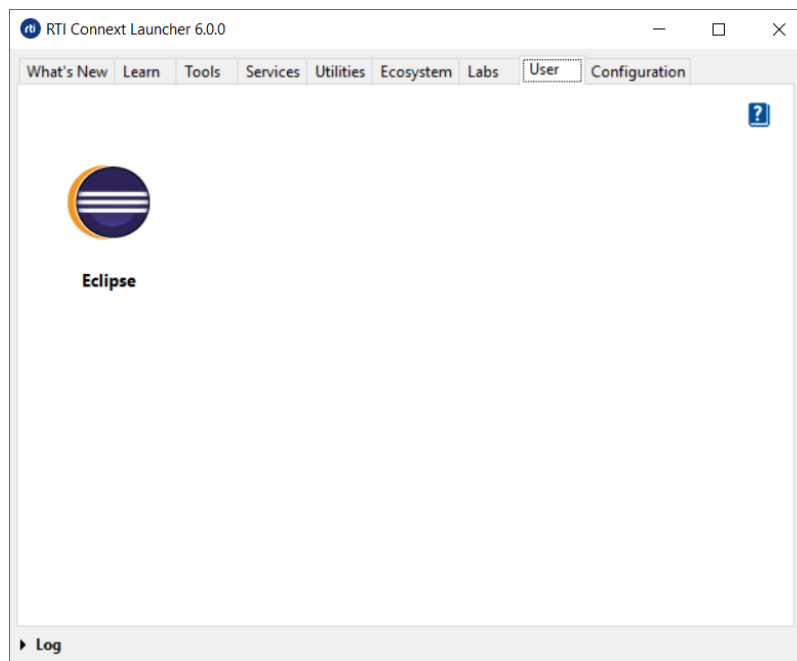
Products downloaded by using the Ecosystem tab in *RTI Launcher* are not part of RTI and you should contact the third-party provider for more information about them.



## 2.3.9 User Tab

The User tab is reserved for customizing *Launcher*. Its purpose is to allow users to integrate their preferred applications in *Launcher*. The User tab is not visible the first time *Launcher* is run, because it's empty by default, and *Launcher* doesn't show tabs that are empty. The folder that defines this tab is in the RTI workspace in your home folder: `rti_workspace/version/user_config/launcher/panels/user`. Inside this folder, you will find two files:

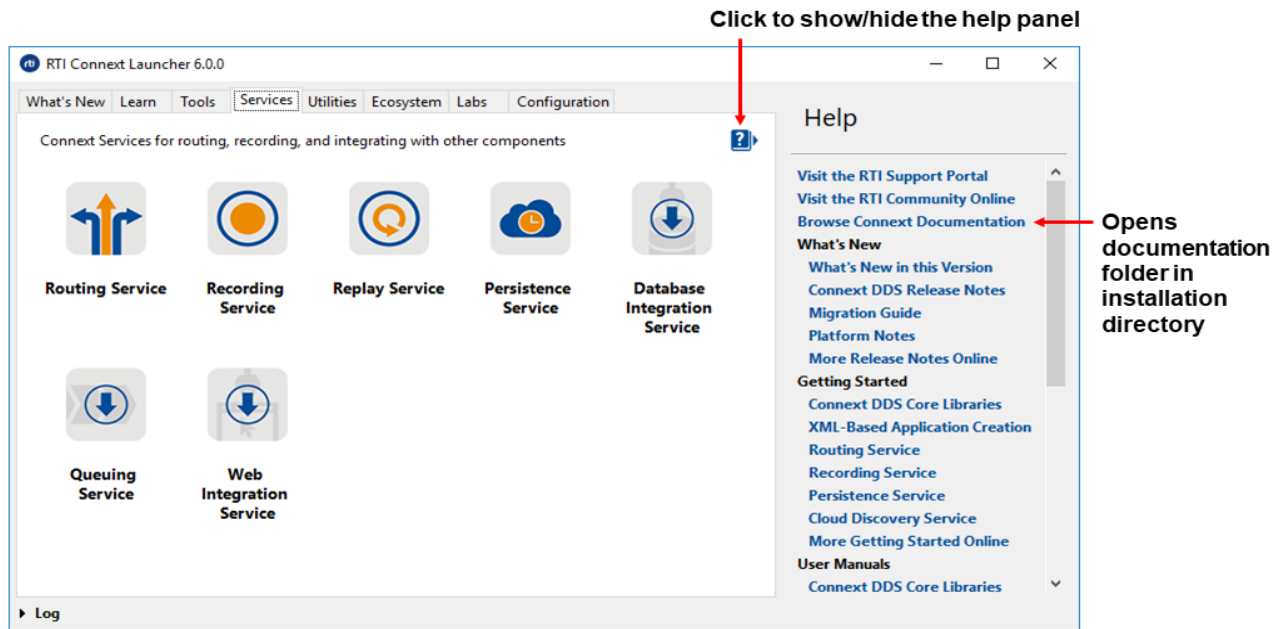
- **configuration.xml**: used to configure the name of the tab, add a description to the tab, and alter the order of the buttons.
- **example.xml**: used to add a shortcut button to any application in the system.



You can modify the **user** folder to add shortcuts for any application in the system. See [Chapter 3 Configuring Launcher on page 24](#) for more details on how to do this.

## 2.4 Help

By default, the help content, which includes links to documentation and other information such as the RTI Support Portal and RTI Community website, is shown. Each tab has a button in the upper right hand corner which is used to show or hide the help content.



The **Browse Connex Documentation** link opens the root of the documentation folder in the *Connex DDS* installation directory. Links to specific guides and API references also open those documents in the installation directory.

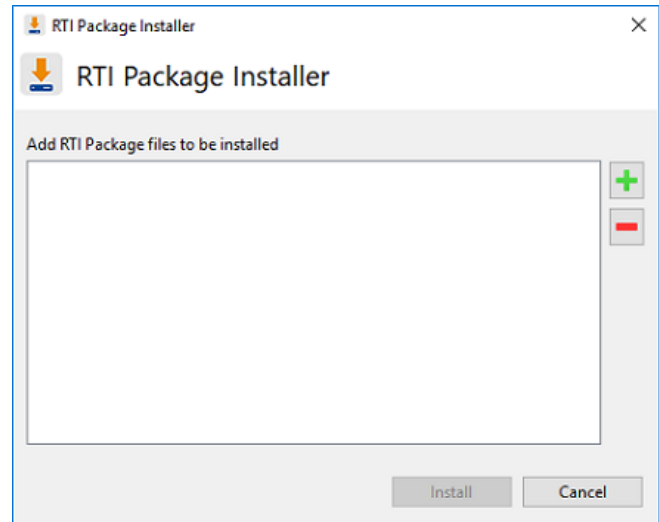
## 2.5 Installing Target Libraries and RTI Components

*Launcher* uses the RTI Package Installer to install new libraries and components. The Package Installer accepts files in RTIPKG format (\*.rtipkg). RTI's target libraries and add-on components are available in this RTIPKG format when downloaded from the RTI download portal.

The RTI Package Installer executable is in the *Connex DDS* installation directory, in the **bin** directory. It can also be executed from the command-line prompt.



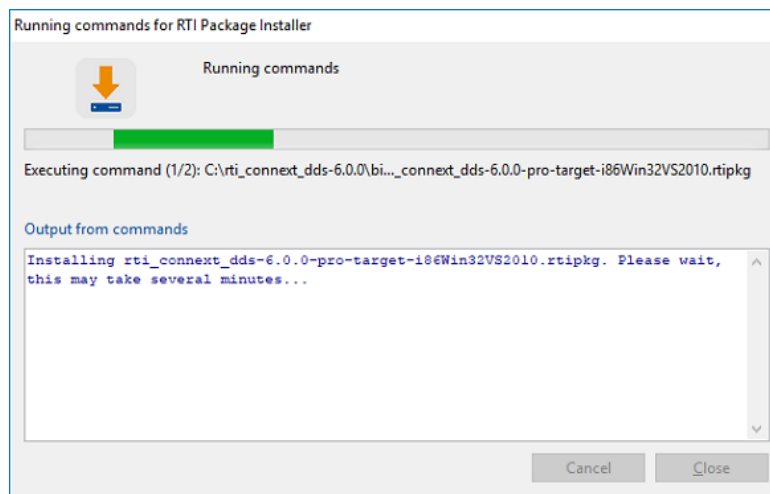
In *Launcher*, the RTI Package Installer can be found in the Configuration tab. When you click it, a dialog will pop up, like this:



At this point, select the RTIPKG files to be installed.

If you click on the '+' button, a file chooser dialog will appear, allowing you to navigate to the file(s) you want to install. You can also drag and drop RTIPKG files into this window.

Once the files are selected, click the **Install** button. The install commands are launched sequentially. A progress dialog will appear:



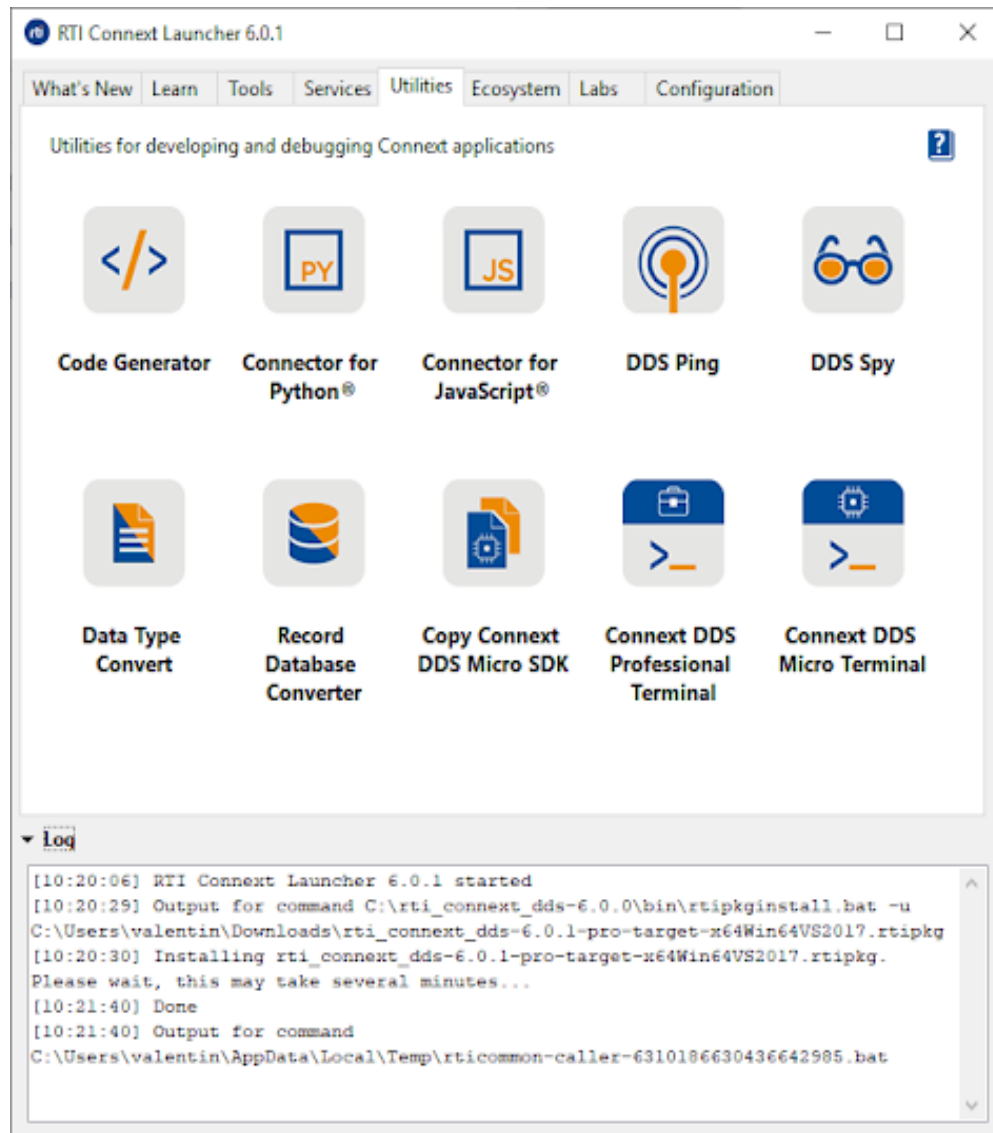
**Note:** The drag and drop feature won't work if you opened *Launcher* as an administrator on a Windows system.

## 2.6 Troubleshooting with Launcher

*Launcher* provides two debugging or troubleshooting mechanisms:

- **Log view:** *Launcher* produces log messages when it performs an action, an error occurs, etc. You can access these log messages from any of the tabs by clicking on the expandable 'Log' view.

When clicked, the view will expand and show all the messages produced up to that point:



- **Log files:** *Launcher* logs output and errors to files in a special directory. This directory can be found in the user home's RTI workspace directory: **rti\_workspace/<version>/user\_config/launcher/logs**. *Launcher*'s execution log files are named with the following pattern: **launcher-log-<timestamp>.txt**. Every execution of *Launcher* creates a different log file.

For applications not launched in command-prompt windows—like the applications in the Tools tab—*Launcher* also logs their output into text files for application troubleshooting. These files are stored in the same place as the *Launcher* logs (**rti\_workspace/version/user\_config/launcher/logs**). They are named following this pattern: **log-<executable name>-<timestamp>.out**.

# Chapter 3 Configuring Launcher

## 3.1 Launcher Tabs and Their Associated XML Files

*Launcher's* tabs are defined using XML inside a folder. There is a folder for each tab. Each folder contains an XML file for each button and an optional configuration file that is used to configure the name of the tab, the description of the tab, and the order of the buttons. These are predefined XML files.

You should not modify the predefined XML files except the configuration file (configuration.xml), which is used to configure the order of the buttons in a tab. The predefined XML files are in the *RTI Connext DDS* installation directory, in `<NDDSHOME>/resource/app/app_support/launcher/panels`. They configure the following tabs:

- Learn
- Tools
- Services
- Utilities
- Ecosystem

There are other *Launcher* configuration files that are intended to be customized by users. You will find these files in your RTI workspace<sup>1</sup>: `rti_workspace/<version>/user_config/launcher/panels` directory. You can use these files to configure the following tabs:

- Labs
- User (see [3.3 Example: Adding a Button to Launcher's User Panel on page 26](#))

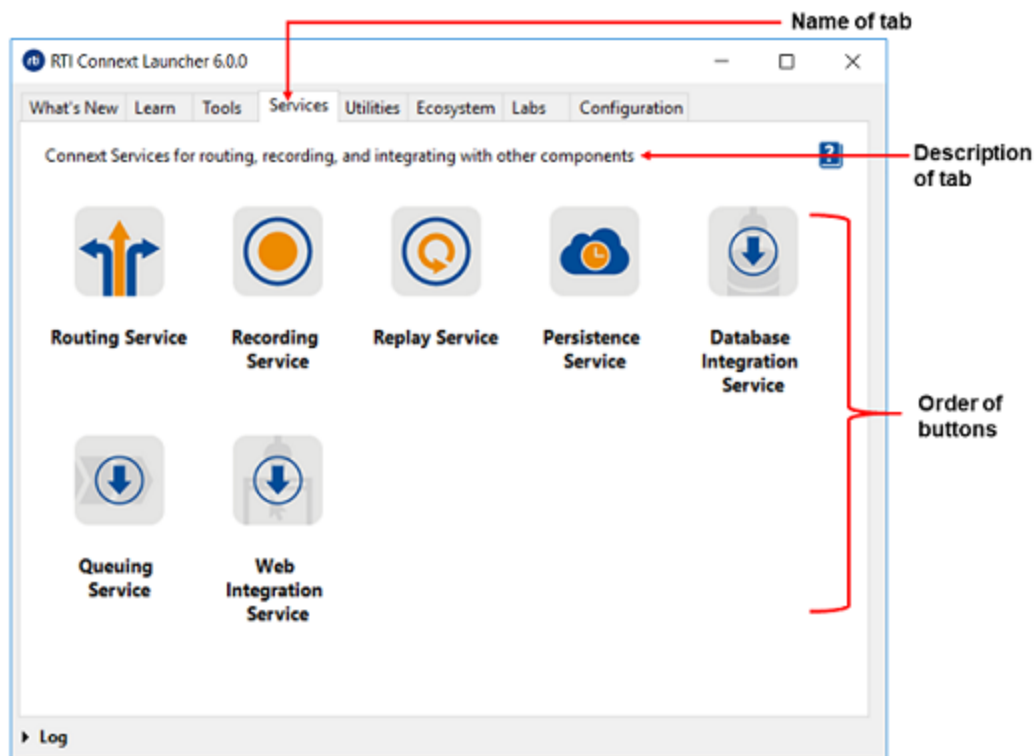
---

<sup>1</sup>See [1.1 Paths Mentioned in Documentation on page 1](#).

**Note:** You can add more tabs to Launcher. See [3.4 Example: Adding a Tab to Launcher on page 29](#) for more information.

### 3.1.1 Configuration file

The configuration file is an optional file used to configure the following content in each tab:



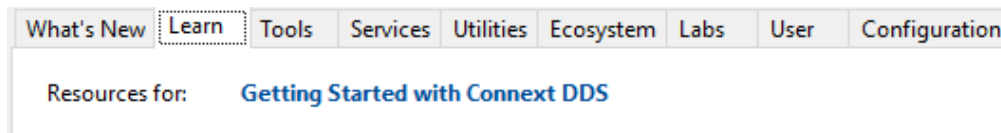
- **Name of the tab:** If not specified, Launcher will use the name of the folder.

```
<name>Services</name>
```

- **Description of the tab:** Displayed at the beginning of each tab. The description can be plain text or a link to any resource, such as a PDF or website. The following shows how the Learn tab has been configured to show its description:

```
<description>
  <element>
    <message>Resources for: </message>
  </element>
  <element>
    <message>Getting Started with Connex DDS</message>
    <link>manuals/connex_dds/RTI_ConnexDDS_CoreLibraries_GettingStarted.pdf</link>
  </element>
</description>
```

The following description has two parts, both plain text; however, the second one is also a link to the *RTI Connex DDS Core Libraries Getting Started Guide*:



- **Organization of buttons in the tab:** If not specified, the buttons will be organized alphabetically by name. To organize the buttons, specify the name of the file and not the name of the button itself. You can modify the configuration file of all the tabs in *Launcher* to reorganize the buttons.

```
<order>
  <name>RoutingService.xml</name>
  <name>RecordingService.xml</name>
  <name>ReplayService.xml</name>
  <name>PersistenceService.xml</name>
  <name>DataBaseIntegration.xml</name>
  <name>QueuingService.xml</name>
  <name>WebIntegrationService.xml</name>
</order>
```

For example: consider two buttons in the user tab, Eclipse.xml and Notepad.xml. Launcher adds first the Eclipse button and then the Notepad button, alphabetically by name. If you rename the file Eclipse.xml to Z.xml, however, the first button will now be the Notepad button (Eclipse will be the second button). Alternatively, use the `<order>` tag to explicitly choose the order of the buttons.

## 3.2 How Launcher Finds Images

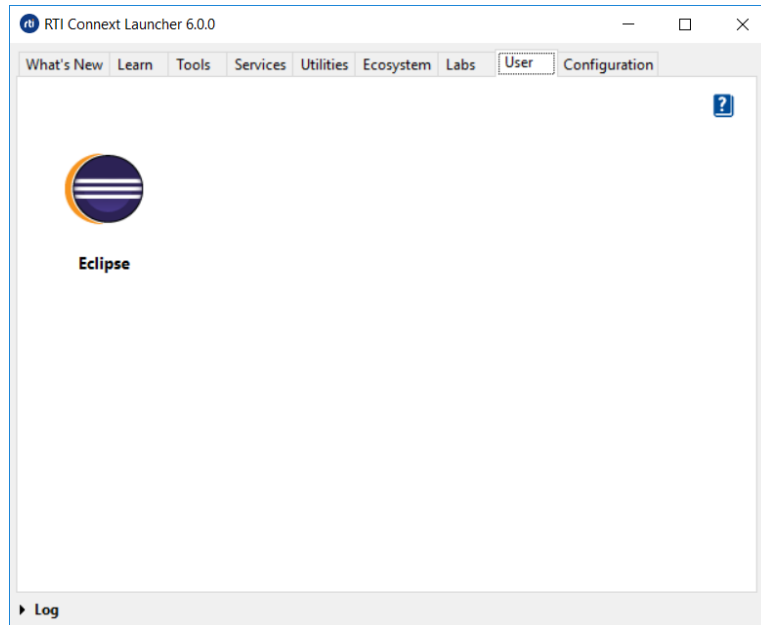
*Launcher* looks for the image files to be shown for the applications in the following places:

- In the *Connex DDS* installation directory, in `<NDDSHOME>/resource/app/app_support/launcher/icons`. This folder is used for RTI-related applications and applications by RTI's partners (shown in the Ecosystem tab).
- In your RTI workspace directory, under `rti_workspace/version/user_config/launcher/icons`. This folder may not exist after installing and first running the tool. To add user-related images, you have to create this folder and add your icon image files there.
- Absolute paths. *Launcher* can detect files described as an absolute path to the image.

## 3.3 Example: Adding a Button to Launcher's User Panel

The User tab is not visible the first time *Launcher* is run, because it's empty by default, and *Launcher* doesn't show tabs that are empty. This tab is intended to be configured by the user.

This section shows how to add a button to the User tab's XML file so that appears in *Launcher*. We'll use the Eclipse development environment as an example:



The User tab is defined in the **user** folder found in the *Launcher* configuration folder in the user home's RTI workspace. Inside this folder are two files, **configuration.xml** and **example.xml**. When the **example.xml** file is opened for the first time, it contains the following:

```
<?xml version="1.0" encoding="UTF-8"?>
<launcher xmlns:xsi="http://www.w3.org/2001/XMLSchema-instance"
  xsi:noNamespaceSchemaLocation="launcher_panel.xsd">
  <!-- Add a custom menu item here -->
</launcher>
```

You can change the name of the file "**example.xml**"; however, take into account that by default *Launcher* uses the name of the files to organize the buttons in the Tab alphabetically (each file represents a button). You can also reorganize the buttons using the configuration file as explained in [3.1 Launcher Tabs and Their Associated XML Files](#) on page 24.

All the tab/panel configuration files start with the XML tag `<launcher>`. Let's add a button entry for running Eclipse to the user panel definition. Buttons are defined in a tag called `<button>`:

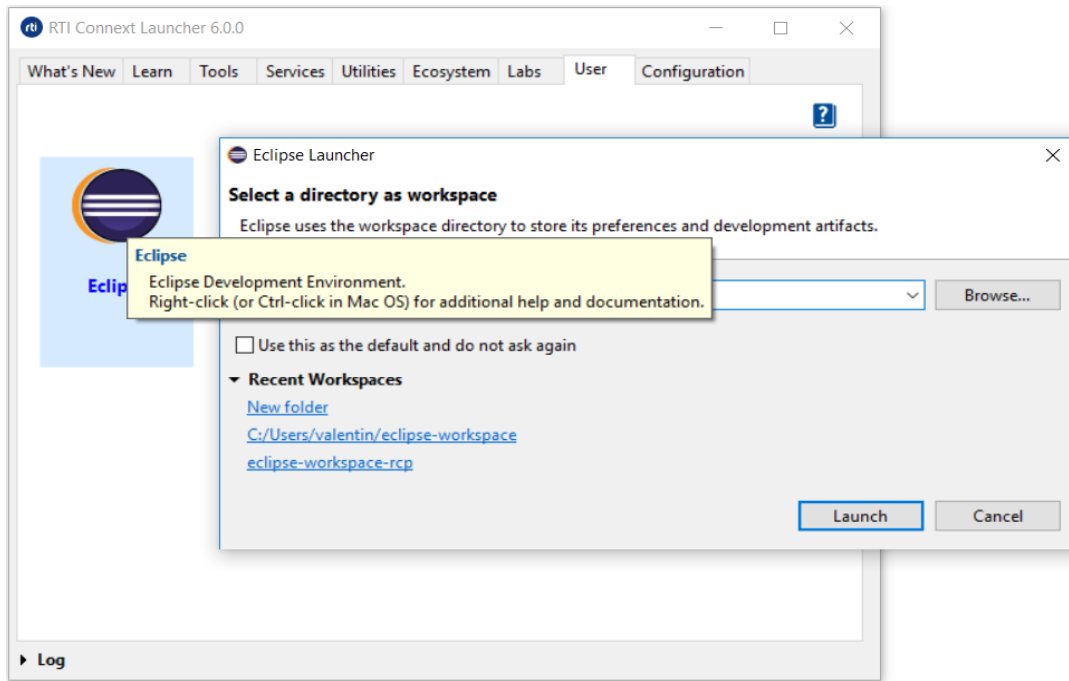
```
<?xml version="1.0" encoding="UTF-8"?>
<launcher xmlns:xsi="http://www.w3.org/2001/XMLSchema-instance"
  xsi:noNamespaceSchemaLocation="launcher_panel.xsd">
  <!-- Add a custom menu item here -->
  <button name="eclipse">
    <icon>eclipse256.png</icon>
    <tooltip>Eclipse:
      Eclipse Development Environment.
    </tooltip>
    <legend>Eclipse</legend>
    <toolexec>C:\Eclipse\eclipse.exe</toolexec>
    <popupmenu>
    </popupmenu>
  </button>
</launcher>
```

```
</button>  
</launcher>
```

This is how the different tags are interpreted by *Launcher*:

- **'name' attribute:** Internal name of the button. No specific rule for it.
- **icon:** Path or name of the icon file that will be used to show the application in the panel. Preferred image file formats for *Launcher* are PNG and GIF (*Launcher* may not be able to correctly render the file if another format is provided, e.g., vectorial). It can contain an absolute path to the file, or it can refer to the name of the file, in which case the image file will be looked for in one of the image locations discussed in [3.2 How Launcher Finds Images on page 26](#). In our case, we copied the eclipse 256 logo file (eclipse256.png) into **rti\_workspace/<version>/user\_config/launcher/icons**. If the icons sub-directory doesn't exist, it can just be created normally.
- **tool-tip:** Required field. It is used to define a title for the application and a brief description. This information will be shown to the user as a balloon tool-tip when hovering over the icon. The format of this field must be: **{Title}:{Description}** (the ':' is necessary; *Launcher* may fail to create the panel if not found).
- **legend:** Title for the tool that will be shown right below the icon.
- **toolexec:** Path to the executable to run when the user clicks on the application icon.
- **popupmenu:** Required field, needs to be present, but it may be empty, like in our example. This tag is used to describe entries in the context menu that will be shown when the user right-clicks on the icon.

Once the **example.xml** file has been modified and saved, restart or start *Launcher* for the changes to take effect. You should be able to see the User tab now, and in it there will be a launch button for the Eclipse Development Environment.



*Launcher*'s XML format for panels is described in the XSD file **launcher\_panel.xsd**. This file is located in the same directory as the **user** folder and **labs** folder (**rti\_workspace/version/user\_config/launcher/panels**). This file provides complete reference for defining buttons for *Launcher* in XML.

### 3.4 Example: Adding a Tab to Launcher

The User tab is not the only customizable tab in *Launcher*. To add a new tab to *Launcher*, create a folder in the following directory: **rti\_workspace/version/user\_config/launcher/panels**. Name the folder with the name you want to give the tab.

*Launcher* won't display the tab until you add at least one button, because *Launcher* doesn't show tabs that are empty. See [3.3 Example: Adding a Button to Launcher's User Panel on page 26](#).