

# **RTI Spreadsheet Add-in**

**for Microsoft® Excel®**

**User's Manual**

**Version 6.1.1**



© 2022 Real-Time Innovations, Inc.  
All rights reserved.  
Printed in U.S.A. First printing.  
March 2022.

## **Trademarks**

RTI, Real-Time Innovations, Connex, NDDS, the RTI logo, 1RTI and the phrase, “Your Systems. Working as one,” are registered trademarks, trademarks or service marks of Real-Time Innovations, Inc. All other trademarks belong to their respective owners.

## **Copy and Use Restrictions**

No part of this publication may be reproduced, stored in a retrieval system, or transmitted in any form (including electronic, mechanical, photocopy, and facsimile) without the prior written permission of Real-Time Innovations, Inc. The software described in this document is furnished under and subject to the RTI software license agreement. The software may be used or copied only under the terms of the license agreement.

This is an independent publication and is neither affiliated with, nor authorized, sponsored, or approved by, Microsoft Corporation.

The security features of this product include software developed by the OpenSSL Project for use in the OpenSSL Toolkit (<http://www.openssl.org/>). This product includes cryptographic software written by Eric Young (eay@cryptsoft.com). This product includes software written by Tim Hudson (tjh@cryptsoft.com).

## **Notice**

Any deprecations noted in this document serve as notice under the Real-Time Innovations, Inc. Maintenance Policy #4220.

## **Technical Support**

Real-Time Innovations, Inc.

232 E. Java Drive

Sunnyvale, CA 94089

Phone: (408) 990-7444

Email: [support@rti.com](mailto:support@rti.com)

Website: <https://support.rti.com/>

# Contents

---

## **Chapter 1 Welcome to Spreadsheet Add-in for Microsoft Excel**

|   |   |
|---|---|
| 1.1 Installation Notes .....                  | 2 |
| 1.2 Uninstalling the Spreadsheet Add-in ..... | 3 |
| 1.3 Available Documentation .....             | 3 |
| 1.4 Paths Mentioned in Documentation .....    | 3 |

## **Chapter 2 Learning the Basics**

|  |    |
|--|----|
| 2.1 The Spreadsheet Add-in Toolbar .....                               | 5  |
| 2.2 Starting the Add-in .....  | 7  |
| 2.3 Monitoring Topics .....  | 8  |
| 2.3.1 Filter Expression Details .....                                  | 12 |
| 2.4 Subscribing to Data .....  | 14 |
| 2.5 Publishing Data .....  | 17 |
| 2.5.1 Creating a Publication Table .....                               | 17 |
| 2.5.2 Filling in the Data to be Published .....                        | 19 |
| 2.5.3 Publishing the Data .....  | 20 |
| 2.6 Monitoring Built-in Topics .....                                   | 21 |
| 2.7 Integration with Extensible Types .....                            | 24 |
| 2.8 Providing Type Definitions in XML .....                            | 27 |
| 2.8.1 Storing the Type Definitions where the Add-in Expects Them ..... | 28 |
| 2.8.2 Creating a Topic Monitor using XML Types .....                   | 28 |
| 2.8.3 Creating a Publication via XML .....                             | 29 |

## **Chapter 3 Configuring the Spreadsheet Add-in**

|   |    |
|---|----|
| 3.1 Configuration Parameters .....  | 31 |
| 3.2 Changing Data Refresh Frequency (Throttle Interval) and Auto-Publish Rate ..... | 38 |
| 3.2.1 Update Frequency for Subscribing Cells .....                                  | 38 |
| 3.2.2 Auto Publish Frequency .....  | 38 |

---

|   |           |
|---|-----------|
| 3.3 Using Different Domains at the Same Time .....  | 39        |
| <b>Chapter 4 Visual Basic for Applications (VBA) Functions for the Spreadsheet Add-in</b> |           |
| 4.1 Enabling Visual Basic Support .....   | 40        |
| 4.2 Supported VBA Functions .....   | 41        |
| 4.3 Using VBA Functions .....   | 41        |
| <b>Appendix A Troubleshooting</b>   |           |
| A.1 License Management .....  | 42        |
| A.2 Changing the Excel Throttle Interval, RTDThrottleInterval .....                       | 43        |
| A.3 Spreadsheet Add-in does not Appear in Excel ADD-INS Tab .....                         | 44        |
| A.3.1 Enabling Spreadsheet Add-In After Recovering from a Loading Error .....             | 44        |
| A.4 Spreadsheet Add-in Appears Unresponsive in Excel 2013 .....                           | 45        |
| <b>Appendix B Subscribing to Data with Real-Time Data (RTD) Function</b> .....            | <b>46</b> |
| <b>Appendix C Entity Creation and Destruction</b> .....                                   | <b>49</b> |
| <b>Appendix D Controlling File Locations with Registry Settings</b> .....                 | <b>51</b> |

# Chapter 1 Welcome to Spreadsheet Add-in for Microsoft Excel

Welcome to *RTI® Spreadsheet Add-in for Microsoft® Excel®*. This revolutionary component of the *RTI Connex® DDS* product family allows you to rapidly analyze, visualize, and respond to your real-time data, transforming information into intelligent action and ultimately business value. This powerful tool leverages Microsoft Excel technology to radically increase the productivity of both analysts and decision makers by decreasing the amount of time and effort that stand between the arrival of information and the actions taken in response to that information.

Traditionally, data analysis involves recording the data, post-processing it (perhaps with hand-coded programs), and creating static summaries and reports by hand. Only then can the data be visualized, understood, and acted upon. Not only is this process slow and expensive, the information may be obsolete by the time the report is ready. To get real-time data visualization and analysis, you have to invest in expensive custom tooling—often an impractical option at the user or the operator level.

*Spreadsheet Add-in for Microsoft Excel* is different. Your queries, formulas, and charts aren't part of a static report: they operate on live data that is continually updated in real time. You can even republish the results of your analysis as it changes, making it instantly available to team members and other applications. There are no custom applications to deploy, administer, or be trained on: all of this happens within the Microsoft Excel application that you know and use already.

With *Spreadsheet Add-in for Microsoft Excel*, application developers can truly enable *data-centric* design and focus on putting the data on the network, leaving the visualization aspect to the data consumers. Dashboards can be created at deployment time and customized according to the needs of the data consumer.

By leveraging a well-known and widely used technology such as Excel, you can build alerts, correlate multiple streams of real-time data, process and analyze high-volume event streams to uncover opportunities and threats as they happen, not after the fact.

You can easily validate, cleanse, and enrich real-time data, and inject data back into the network, since *Spreadsheet Add-in for Microsoft Excel* can work both as a subscriber and a publisher.

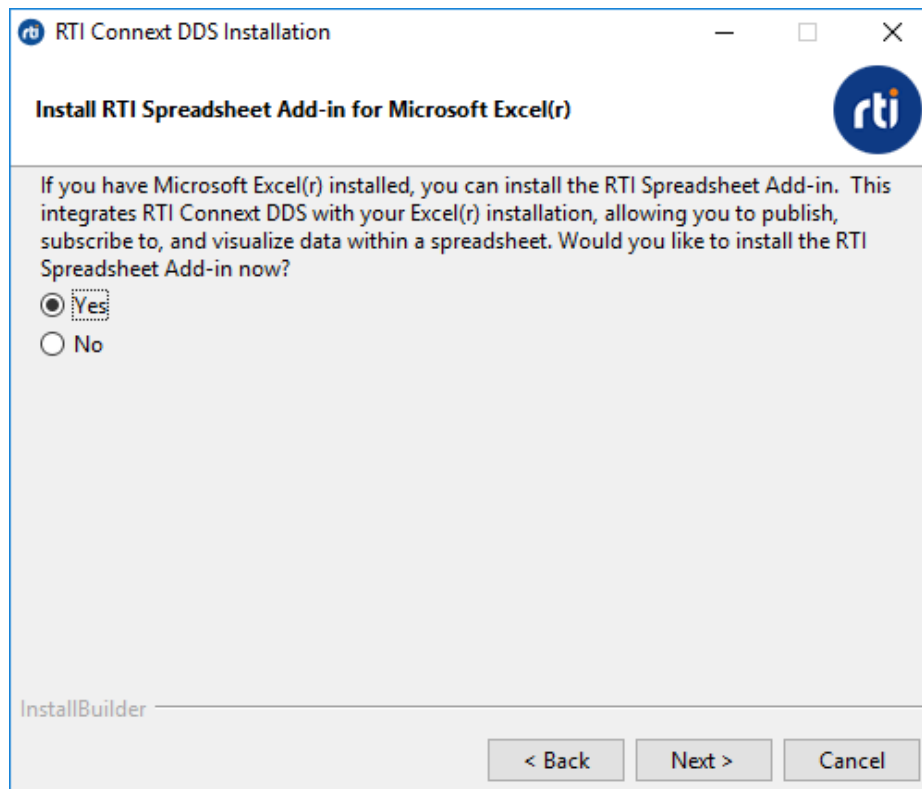
Wizards make it simple to create publications and subscriptions using a point-and-click interface.

### Key Benefits of *Spreadsheet Add-in for Microsoft Excel*:

- Allows spreadsheets to participate seamlessly as peers on a distributed network databus along with applications written in C, C++, Java, .Net and Ada; Complex Event Processing (CEP) engines; databases; and mobile and embedded devices.
- Supports data injection (write back)
- Provides low-latency, real-time analytics and data visualization
- Allows introspection, status and health monitoring of *Connex DDS* applications
- Self-contained within an Excel Add-in, requires no separate service or gateway or custom integration code

## 1.1 Installation Notes

*Spreadsheet Add-in for Microsoft Excel* can be installed with the *Connex DDS* bundles. When running the installer, make sure you check the 'Yes' button when prompted:



If you want to install at a later time or you forgot to check the 'Yes' option in the installation dialog, you can use the Spreadsheet Add-in standalone installer at any time. This installer is in <NDDSHOME>\resource\installers\spreadsheet\_addin\rti\_spreadsheet\_addin-<version>.exe. (See [1.4 Paths Mentioned in Documentation below](#).) You can also install Spreadsheet Add-in via *Launcher*. See the *Launcher User's Manual*.

## 1.2 Uninstalling the Spreadsheet Add-in

To uninstall *Spreadsheet Add-in for Microsoft Excel*, use the uninstall application, <NDDSHOME>\uninstall\uninstall\_spreadsheet\_addin.exe. (See [1.4 Paths Mentioned in Documentation below](#).)

The application will perform the necessary cleanup tasks to properly remove the add-in from Excel and the Global Assembly Cache (GAC).

## 1.3 Available Documentation

*Spreadsheet Add-in for Microsoft Excel* documentation includes:

- **Getting Started Guide** (RTI\_Spreadsheet\_Addin\_GettingStarted.pdf)—Highlights the benefits of *Spreadsheet Add-in for Microsoft Excel*. It also walks you through a short demonstration and a tutorial, so you can quickly see the benefits of using *Spreadsheet Add-in for Microsoft Excel*.
- **Release Notes** (RTI\_Spreadsheet\_Addin\_ReleaseNotes.pdf)—Describes system requirements, as well as any version-specific changes and known issues. (For migration and compatibility information for all products, see the *Migration Guide* on the RTI Community Portal (<https://community.rti.com/documentation>).
- **User's Manual** (RTI\_Spreadsheet\_Addin\_UsersManual.pdf)—Describes how to configure *Spreadsheet Add-in for Microsoft Excel* and provides details on each feature.

## 1.4 Paths Mentioned in Documentation

The documentation refers to:

- <NDDSHOME>

This refers to the installation directory for *RTI® Connex® DDS*. The default installation paths are:

- macOS® systems:  
/Applications/rti\_connex\_dds-6.1.1
- Linux systems, non-*root* user:  
/home/<your user name>/rti\_connex\_dds-6.1.1
- Linux systems, *root* user:  
/opt/rti\_connex\_dds-6.1.1

- Windows® systems, user without Administrator privileges:  
`<your home directory>\rti_connex_dds-6.1.1`
- Windows systems, user with Administrator privileges:  
`C:\Program Files\rti_connex_dds-6.1.1`

You may also see `$NDDSHOME` or `%NDDSHOME%`, which refers to an environment variable set to the installation path.

Wherever you see `<NDDSHOME>` used in a path, replace it with your installation path.

**Note for Windows Users:** When using a command prompt to enter a command that includes the path `C:\Program Files` (or any directory name that has a space), enclose the path in quotation marks. For example:

```
"C:\Program Files\rti_connex_dds-6.1.1\bin\rtiddsgen"
```

Or if you have defined the `NDDSHOME` environment variable:

```
"%NDDSHOME%\bin\rtiddsgen"
```

- *<path to examples>*

By default, examples are copied into your home directory the first time you run *RTI Launcher* or any script in `<NDDSHOME>/bin`. This document refers to the location of the copied examples as *<path to examples>*.

Wherever you see *<path to examples>*, replace it with the appropriate path.

Default path to the examples:

- macOS systems: `/Users/<your user name>/rti_workspace/6.1.1/examples`
- Linux systems: `/home/<your user name>/rti_workspace/6.1.1/examples`
- Windows systems: `<your Windows documents folder>\rti_workspace\6.1.1\examples`

Where 'your Windows documents folder' depends on your version of Windows. For example, on Windows 10, the folder is `C:\Users\<your user name>\Documents`.

Note: You can specify a different location for `rti_workspace`. You can also specify that you do not want the examples copied to the workspace. For details, see *Controlling Location for RTI Workspace and Copying of Examples* in the *RTI Connex DDS Installation Guide*.

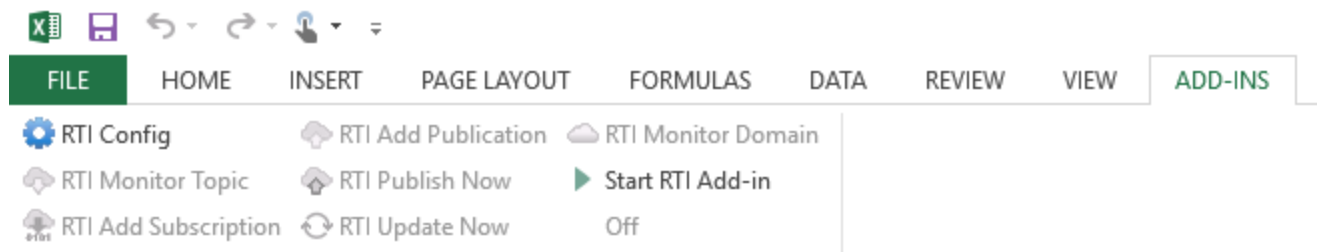


# Chapter 2 Learning the Basics

If *Spreadsheet Add-in for Microsoft Excel* has been set up correctly for the current user, it will load automatically when Excel starts up and you will see a brief message about the add-in being initialized in the status bar at the bottom of the Excel window. If you do not see that message or there is an error, see [Appendix A Troubleshooting on page 42](#).

## 2.1 The Spreadsheet Add-in Toolbar

The Spreadsheet Add-in toolbar is your starting point for all of the add-in's functionality. To see the Spreadsheet Add-In toolbar, select the **Add-Ins** tab on the Ribbon.



The commands in the toolbar are summarized below:

- RTI Config

Opens a dialog for setting configuration parameters. See [Chapter 3 Configuring the Spreadsheet Add-in on page 31](#) for details.

- RTI Monitor Topic

Opens a dialog for creating a subscription table to monitor all instances or a subset of the instances of a specific topic. See [2.3 Monitoring Topics on page 8](#) for details.

This command is only enabled after you have selected **Start Add-in**.

- RTI Add Subscription

Opens a dialog for creating a subscription row to monitor one single instance of a specific topic. See [2.4 Subscribing to Data on page 14](#) for details.

This command is only enabled after you have selected **Start Add-in**.

- RTI Add Publication

Opens a dialog for creating a publication table to publish samples of a specific topic. See [2.5 Publishing Data on page 17](#) for details.

This command is only enabled after you have selected **Start Add-in**.

- RTI Publish Now

Publishes samples in all publication tables now if necessary.

By default, only changed samples will be published. However, you can configure the add-in so that all samples are published regardless of whether they have been changed or not. See [2.5 Publishing Data on page 17](#) for details.

This command is only enabled after you have selected **Start Add-in**.

- RTI Update Now

Checks subscriptions to see if they need to be refreshed with new data.

By default, all subscriptions will be refreshed periodically and automatically if new data is available. However, you can use this button to force immediate refresh of new data.

It is also possible to create special subscriptions that will not be automatically updated and can only be updated manually. This button can be used to refresh all special subscriptions that require manual update. See [2.3 Monitoring Topics on page 8](#) for details.

By default, this button refreshes all subscriptions in all worksheets in the current Excel instance. However, you can also configure the add-in so that this button will only update all the regular automatic-update subscriptions in all worksheets, plus the manual-update subscriptions in the current worksheet only. See [3.1 Configuration Parameters on page 31](#) for details.

This command is only enabled after you have selected **Start Add-in**.

- RTI Monitor Domain

Opens a dialog for creating a table to monitor one kind of discovered entities. See [2.6 Monitoring Built-in Topics on page 21](#) for details.

This command is only enabled after you have selected **Start Add-in**.

- Start/Stop RTI Add-in


Starts/stops the add-in. Other than , no other commands in the toolbar are enabled until the add-in has been started. See [2.2 Starting the Add-in below](#) for details.

## 2.2 Starting the Add-in

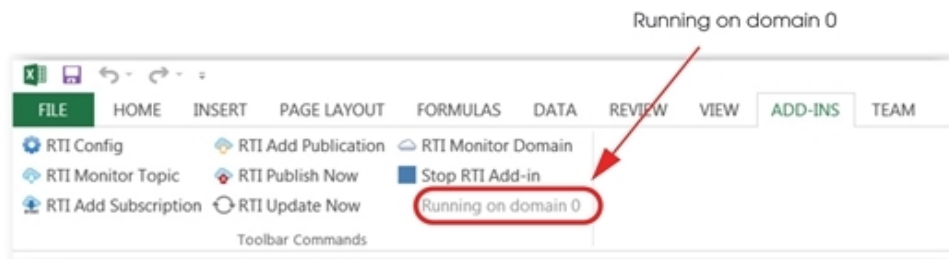
The add-in is not functional until you start it.

Start Microsoft Excel and open a workbook. To use the add-in, you must have an open workbook.

Before starting the add-in, make sure you know the domain ID of the application you want to communicate with. The add-in must use the same domain ID as the application; it uses domain ID 0 by default. If you need to use a domain ID other than 0, select and change the domain ID in that dialog. (For a complete description of the RTI Config dialog, see [Chapter 3 Configuring the Spreadsheet Add-in on page 31.](#))

Once the add-in is set up to use the correct domain ID, simply click from the Spreadsheet Add-in toolbar (or  in the RTI Config dialog) to start discovering other *Connex DDS* applications in the same domain.

If the add-in is started correctly, the domain ID will appear in the lower right corner of the Spreadsheet Add-in toolbar. The other toolbar commands also become enabled.



When you start the add-in, it looks for the license file. You may see a window appear with information about the license file—you can close this window. If you get a license error instead, the add-in will not be functional. (For more information on the license file, see [A.1 License Management on page 42.](#))

The add-in will look for `<your home directory>\rti_workspace\<version>\user_config\spreadsheet_addin`. If this folder doesn't exist, it will create it and copy necessary files into it.

**Note:** When the add-in starts, it will create DDS entities and generate network traffic. For information on when these entities are created and destroyed, see [Appendix C Entity Creation and Destruction on page 49.](#)


Once the add-in is started, you're ready to publish or subscribe to data. See these sections for details:

- [2.3 Monitoring Topics on the next page](#)
- [2.4 Subscribing to Data on page 14](#)

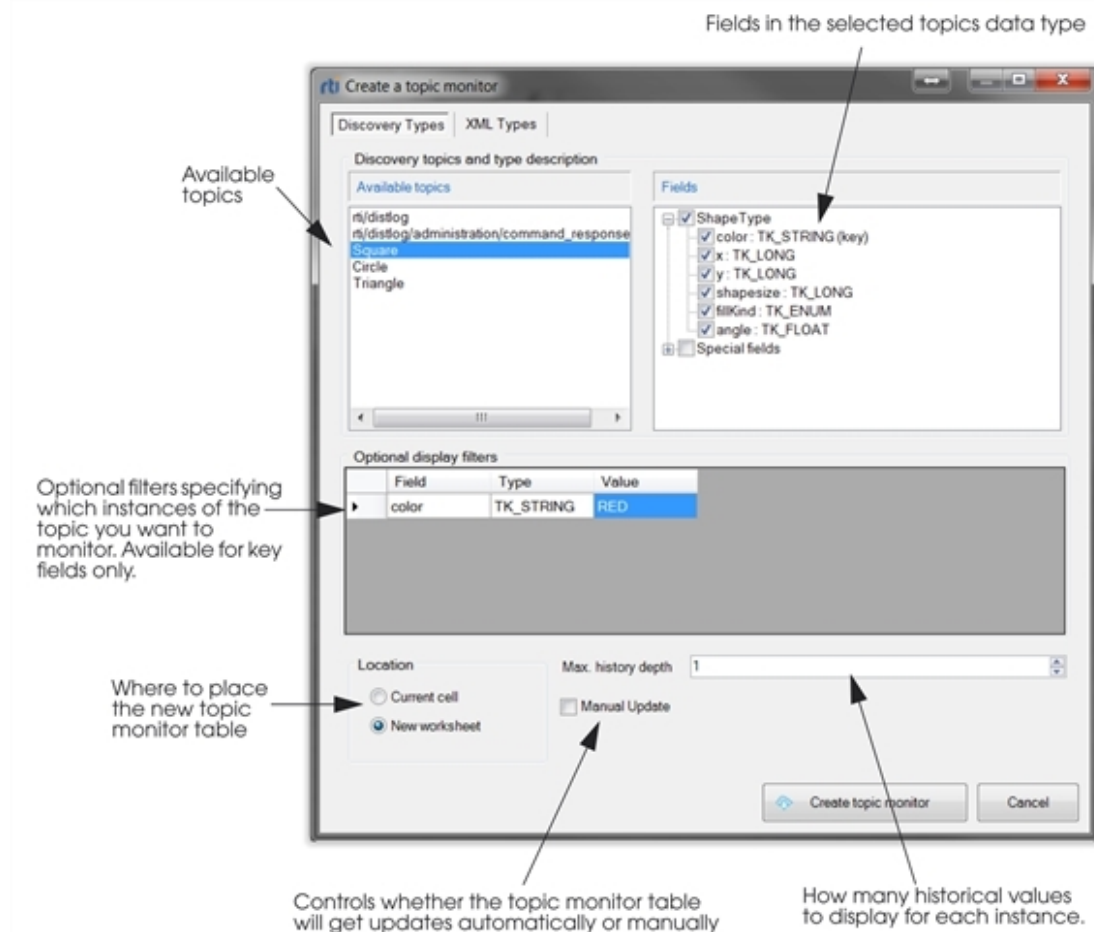
- [2.5 Publishing Data on page 17](#)
- [2.6 Monitoring Built-in Topics on page 21](#)
- [2.7 Integration with Extensible Types on page 24](#)

## 2.3 Monitoring Topics

The **RTI Topic Monitor** feature subscribes to a specific topic. You can subscribe to all instances of a topic, or a subset of instances, by filtering based on key fields. Instances are displayed in separate rows in a worksheet. When new instances are discovered, new rows are automatically added to the worksheet.

From the Spreadsheet Add-in toolbar, select  **RTI Monitor Topic**, then select one of the **Available Topics**.

For example:



## Available Topics

- These are the topics that have been discovered in the domain you selected in the RTI Config dialog.

## Fields

- Use the checkboxes under **Fields** to select which fields in the topic's data type you want to monitor. By default, all the fields in the data type are selected.

The **Special fields** correspond to fields in the Sample Info data structure, which provides meta information about data that is received. The **#source\_timestamp** is the time the sample was sent; the **#reception\_timestamp** is when it was received. You can use these fields to see when a sample was sent or received. The **#reception\_sequence\_number** is the counter of messages received in the topic. (Note: the count of "messages" could be individual samples or batches.) By default, none of the special fields are selected.

Each selected field will appear in a column in the worksheet. If your data type has more than 16,385 fields, you will not be able to select all of them. This limit is imposed by Excel, which has a maximum table size of 65,536 rows by 16,385 columns. The starting location of the table may also limit how many fields you can select (see the **Location** section below).

You may see more than one type with the same name. In this case, one type is the base type and others are extended versions of the base type—see [2.7 Integration with Extensible Types on page 24](#). You can only select one type at a time.

## Optional Display Filters

- This is only a *display* filter—all the samples for the topic are still received, but only the filtered instances are displayed. If you want to receive fewer samples per topic based on a filter, you will need to use the content-filtered topic instead. (See [Chapter 3 Configuring the Spreadsheet Add-in on page 31](#) for details on content filtered topics.)

Filter expressions are defined by Microsoft .Net Framework regular expressions and can be specified for each key field of the Topic's data type. See [2.3.1 Filter Expression Details on page 12](#).

To match all values for a key field, leave the filter blank (default behavior) or specify "=.\*" (this is the regular expression string for wildcard matching).

You can also modify the filter after the table has been created by selecting the cell in the table header that contains the filter expression (such as cell A2 in the example in the [Manual Update](#) section below).

For filtering to occur properly, the filtered key field must be selected for display. (See the [Fields](#) section above for how to select a field for display.)

## Location

- Choose where the instances will be populated—in the currently selected cell or a new worksheet. By default, the new worksheet option is selected.

Keep in mind that each time a new instance is received, a new row (or rows) will be added at the bottom of the topic monitor table. Therefore, the height of the table may grow over time.

Like all tables created by the add-in, no new rows or columns are inserted into the worksheet. Instead, the content of the existing cells are overwritten, with the top left corner of the table be at the current cell if the “**Current cell**” option is selected.

Excel’s maximum table size (noted in the [Fields](#) section above) may restrict where you can start the topic monitor table. For instance, you cannot select a cell in the 255th column and put a table wider than 1 column there.

## Max. History Depth

- The indicates the number of historical values to be displayed for each instance. It cannot be larger than the depth field in the DataReader’s History QoS, as specified in the current QoS profile (see [Chapter 3 Configuring the Spreadsheet Add-in on page 31](#) for how to select a QoS profile). Default value of Max. history depth is 1.

Two QoS profiles are provided with *Spreadsheet Add-in for Microsoft Excel*: **DefaultProfile** (with **depth** = 4) and **NoHistoryProfile** (with **depth** = 1). By default, **DefaultProfile** is used and therefore **Max. history depth** is limited to 4.

Setting a high value for the **Max. history depth** can cause Excel to slow down quite a bit, especially if you are displaying a lot of fields from the data type and instances are published at a high rate.

If you set **Max. history depth** greater than 1, some rows in the Topic Monitor table may show values of “#DATA N/A”. That means not enough samples have been received yet to fill up all the historical values for that instance.

## Manual Update

- By default, this checkbox is not checked and the subscription table is refreshed automatically on a periodic basis if new data or new instances are available. (See [3.2 Changing Data Refresh Frequency \(Throttle Interval\) and Auto-Publish Rate on page 38.](#))

Check the **Manual update** checkbox if you want to manually update the subscription table on a controlled manner instead. A manually updated subscription table will only be updated when you click the **RTI Update Now** button. A manually updated subscription table will be marked as **(M)** in the

table header (cell A1 in the following screenshot), and the cell's RTD function will contain the “**MANUAL:<sheetname>**” parameter. (See [Appendix B Subscribing to Data with Real-Time Data \(RTD\) Function on page 46.](#))

By default, clicking the **RTI Update Now** button will update all subscriptions in all spreadsheets of the current Excel instance. However, you can modify the behavior through an add-in configuration parameter, so that clicking on the **RTI Update Now** button will update all automatic-update subscriptions in all worksheets, plus the manual-update subscriptions in the current worksheet only. See [Chapter 3 Configuring the Spreadsheet Add-in on page 31](#) for details.

When you click **Create topic monitor**, the add-in creates a topic monitor table—either in the currently selected cell or in a new worksheet (depending on your Location option). For example:

Cell A2 is a Filter

(M) indicates a manual-update subscription

Three rows of table header.

Number of rows in table = number of instances received \* max. history depth. Samples for the same instance will be grouped together, with the latest sample for that instance shown first. The number of rows may increase over time as new instances are received.

| SUBSCRIPTION Topic: Square   Type: ShapeType |     |     |          |          |       |  |
|--|-----|-----|----------|----------|-------|--|
| color_x,y,shapsize,fillKind,angle            |     |     |          |          |       |  |
| color  | x   | y   | shapsize | fillKind | angle |  |
| MAGENTA                                      | 156 | 217 | 30       | 2        | 0     |  |
| RANGE  | 165 | 188 | 30       | 3        | 276   |  |

Each selected field in the data type appears in its own column. Darker colored column headers indicate key fields.

Deleted instances appear in red.

### When is the table refreshed?

- If the topic monitor table is created *without* the **Manual update** option, data in the topic monitor table is refreshed periodically if new samples are received, and the periodic check interval is limited by the throttle interval settings. See [Chapter 3 Configuring the Spreadsheet Add-in on page 31](#) for details.
- If the topic monitor is created *with* the **Manual update** option, data in the topic monitor table is only refreshed if you click the **RTI Update Now** button in the Spreadsheet Add-in toolbar (if you have configured the **RTI Update Now** button to only update manual-update subscriptions in current worksheet, then the topic monitor table will be refreshed only if it is in the current worksheet when the button is pressed). (See the [Manual Update](#) section above.)

**To remove a topic monitor table:** Delete the worksheet or the whole topic monitor table. If you want to keep the existing cells to keep getting updates for existing instances but not receive any new instances, delete the header cell (such as cell A1 in the above screenshot).

**If you see a red row:** This means the instance has been deleted by the publisher, or the instance has not been updated according to the contract, and therefore is considered ‘not alive’ (refer to the *RTI Connex DDS Core Libraries User's Manual* regarding ‘not alive’ instances).

If you want to know when the actual reader that subscribes to the topic is created/deleted behind the scenes, see [Appendix C Entity Creation and Destruction on page 49](#).

## 2.3.1 Filter Expression Details

A filter expression *must begin* with one of the operators in [Table 2.1 Filter Comparator Operators](#).

The = and != comparators are followed by an expression supported within the full .NET regular expression syntax. The other comparators can only be followed by an actual string or numerical value. (See the examples in [Table 2.3 Example Filter Expressions](#).)

You can combine filters for the same key field using the logical operators in [Table 2.2 Filter Logical Operators](#).

**Table 2.1 Filter Comparator Operators**

| Operator | Behavior                 |
|----------|--------------------------|
| =        | Equals                   |
| !=       | Not equal                |
| <        | Less than                |
| >        | Greater than             |
| <=       | Less than or equal to    |
| >=       | Greater than or equal to |

**Table 2.2 Filter Logical Operators**

| Operator | Behavior                                       |
|----------|--|
| AND      | True if and only if both expressions are true  |
| OR       | True if one or both expressions are true       |
| XOR      | True if exactly one of the expressions is true |



Table 2.3 Example Filter Expressions

| Filter Expression                      | Explanation   |
|--|---|
| =.*                                    | Matches all.  |
| =IB.*                                  | <p>Example matches:</p> <p>IBM</p> <p>IB</p> <p>IBB</p> <p>IBBBBBM</p> <p>IBMCALL20090310</p> <p>The above list is not the entire universe of matches for the filter expression, simply an example subset.</p>                  |
| !=IB.*                                 | Matches any value that does not match the previous expression (above examples)  |
| < 20090101                             | Based on the field type, matches values if the compare is less than 20090101. If the field is a numeric field (e.g., long, double), the comparison is numeric; if the field is a string field, the comparison is alphabetic.    |
| > 20080101                             | Based on the field type, matches values if the compare is greater than 20080101. If the field is a numeric field (e.g., long, double), the comparison is numeric; if the field is a string field, the comparison is alphabetic. |
| > 20080101 AND < 20090101              | Matches any values where both conditions are true   |
| > 20080101 AND < 20090101 OR =20100315 | Matches any values where the first and second expressions both evaluate to true or the third expression evaluates to true. Note the grouping of expressions.  |

Without a filter expression for any key field, the topic monitor table subscribes to all data for the Topic. This is equivalent to a wildcard expression that matches everything (=.\*)

Spaces and commas are not allowed in the regular expression after the comparators. If you want to include a space in your regular expression after the = or != comparators, use \W to match any single non-word character. For example, the following matches any value that has “good match” in the field, requiring a space between the words “good” and “match”:

```
=good\wmatch
```

Whitespace is required around the logical operators (**AND**, **OR**, **XOR**). Any whitespace around the comparators or logical operators will not be treated as part of the expression. The expression ends when whitespace is encountered (see the examples in [Table 2.3 Example Filter Expressions](#)).

Filters are always evaluated from left to right. Parentheses are not supported.

Documentation for the Regular expression class can be found at the following Microsoft web site: <http://msdn.microsoft.com/en-us/library/hs600312.aspx>

For additional information about regular expressions, the following web site may be useful: <http://www.regular-expressions.info/dotnet.html>

If you provide a filter expression for a key field, that key field *must be selected* for display. If the filtered field is not displayed, the filter for the key field will not be applied. (See the [Fields](#) section in [2.3 Monitoring Topics on page 8](#) for how to select a field for display.)

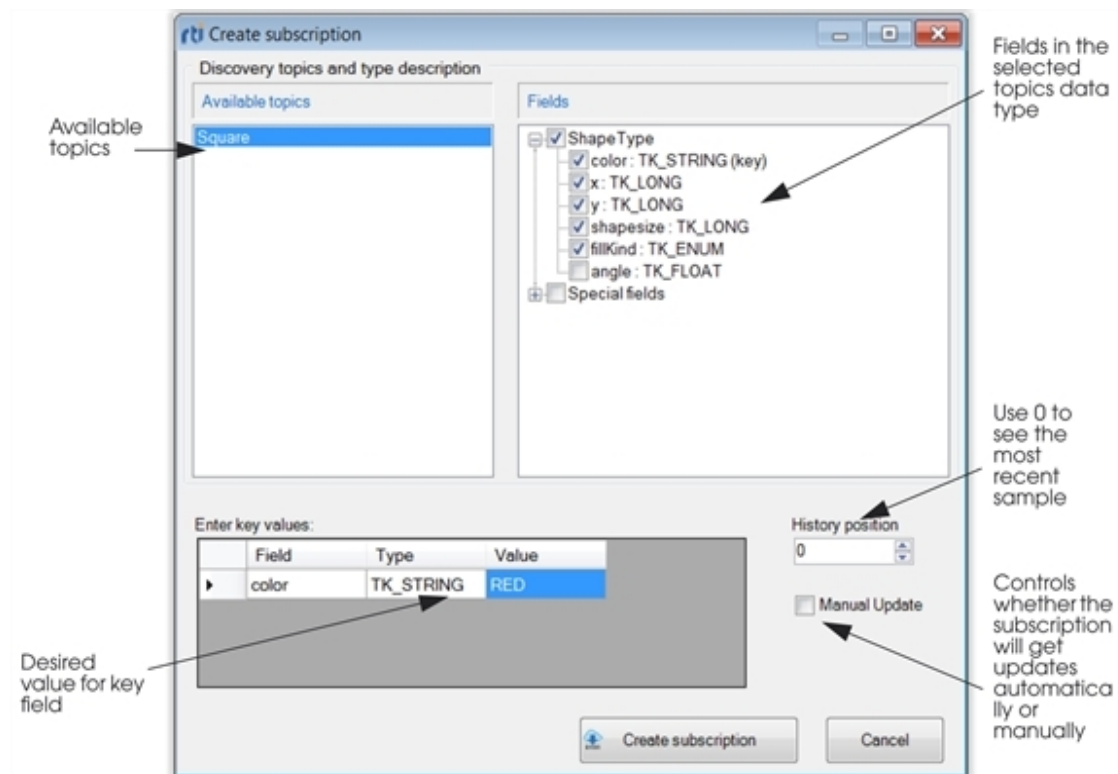
## 2.4 Subscribing to Data

[2.3 Monitoring Topics on page 8](#) showed you how to subscribe to data for *multiple* instances of a topic. If you only want to subscribe to *one specific instance* of a topic, use the **RTI Add Subscription** feature. The main difference in these two features is that a topic monitor table may grow over time as new instances are discovered. A subscription is always a single row and does not grow because it is only subscribing to one specific instance.

First, **select a cell in the worksheet where you want the subscription to begin.**

Then from the Spreadsheet Add-in toolbar, select  RTI Add Subscription .

Click one of the **Available Topics**, then select the fields you want to display.



### Available Topics

- These are the topics that have been discovered in the domain you selected in the RTI Config dialog.

## Fields

- You may see more than one type with the same name. In this case, one type is the base type and others are extended versions of the base type—see [2.7 Integration with Extensible Types on page 24](#). You can only select one type at a time.
- Use the checkboxes under **Fields** to select which fields in the topic's data type you want to monitor. By default, no fields in the data type are selected.
- The **Special fields** correspond to fields in the Sample Info data structure, which provides meta information about data that is received. The **#source\_timestamp** is the time the sample was sent; the **#reception\_timestamp** is when it was received. You can use these fields to see when a sample was sent or received. The **#reception\_sequence\_number** is the counter of messages received in the topic. (Note: the count of "messages" could be individual samples or batches.) By default, none of the special fields are selected.
- Each selected field will appear in a column in the worksheet. If your data type has more than 16,385 fields, you will not be able to select all of them. This limit is imposed by Excel, which has a maximum table size of 65,536 rows by 16,385 columns.
- Excel's maximum table size (noted above) may restrict where you can start the subscription. For instance, you cannot select a cell in the 255th column and put a subscription wider than 1 column there.

## Key values

- If the topic's data type has a key, you *must* specify value(s) for the key—this is how you specify which instance of the topic you want to subscribe to.
- Exact values must be entered. Strings are case sensitive. Wildcards and regular expressions are not permitted.

## History position

- The history position of a subscription is the "age" of the sample you want to get from the reader queue. History position 0 will give you the most recent sample, 1 will give you the next most recent one, up to  $N$  (history depth - 1) for the oldest one. The default value for history position is 0.
- The history position value is limited by the **depth** field in the DataReader's History QoS, as specified in the current QoS profile (see [Chapter 3 Configuring the Spreadsheet Add-in on page 31](#) on how to select a QoS profile).


Two QoS profiles are provided with *Spreadsheet Add-in for Microsoft Excel*: **DefaultProfile** (with **depth** = 4) and **NoHistoryProfile** (with **depth** = 1). By default, **DefaultProfile** is used and therefore **History position** is limited to a value of 3.

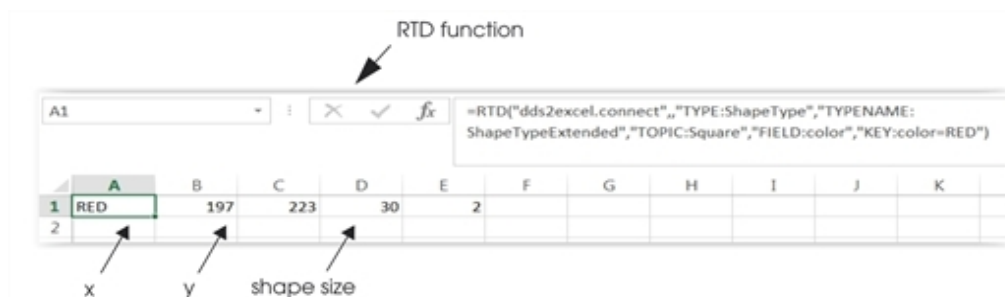
## Manual Update

- By default, this checkbox is not checked, and the subscription is automatically refreshed on a periodic basis if new data is available. (See [Chapter 3 Configuring the Spreadsheet Add-in on page 31](#) for how to control the periodic refresh rate.)

Check the **Manual update** checkbox if you want to manually update the subscription in a controlled manner instead. A manual-update subscription is only updated when you click the **RTI Update Now** button in the Spreadsheet Add-in toolbar. The cells in a manual-update subscription will contain an RTD function with the “**MANUAL:<sheetname>**” parameter. (See [Appendix B Subscribing to Data with Real-Time Data \(RTD\) Function on page 46](#).)

By default, clicking the **RTI Update Now** button will update all subscriptions in all spreadsheets of the current Excel instance. However, you can modify the behavior through the add-in configuration parameter, so that clicking on the **RTI Update Now** button will update all automatic-update subscriptions in all worksheets, plus the manual-update subscriptions in the current worksheet only. See [Chapter 3 Configuring the Spreadsheet Add-in on page 31](#) for details.

When you click , the add-in creates a subscription in the worksheet, starting in the currently selected cell:



There is a cell for each field selected in the Create Subscription dialog and an RTD function for each cell (see [Appendix B Subscribing to Data with Real-Time Data \(RTD\) Function on page 46](#)). No table header is created and there is always just a single row.

Notice that the subscription is created by overwriting existing cells in the worksheet—no new row is inserted into the worksheet.

If the cells in the subscription row are showing “#DATA N/A”, that means no data has been received for the instance that you have subscribed to.

When is a subscription refreshed?

- If the subscription is created *without* the **Manual Update** option selected, data in the subscription is periodically checked for update if a new sample is received for the instance, and the periodic check

interval is limited by the throttle interval settings. See [Chapter 3 Configuring the Spreadsheet Add-in on page 31](#) for details.

- If the subscription is created *with* the **Manual Update** option selected, data in the subscription is only refreshed when you click the **RTI Update Now** button in the Spreadsheet Add-in toolbar (if you have configured the **RTI Update Now** button to only update manual-update subscriptions in current worksheet, then the subscription will be refreshed only if it is in the current worksheet when the button is pressed). (See the [Manual Update](#) section above).

**To delete a subscription:** Each cell of the subscription can be deleted individually.

If you want to know when the actual reader that subscribes to the instance of the topic is created/deleted behind the scenes, see [Appendix C Entity Creation and Destruction on page 49](#).


## 2.5 Publishing Data

The previous two sections describe how to *subscribe* to data; this section describes how to *publish* data from an Excel worksheet.

There are three steps:

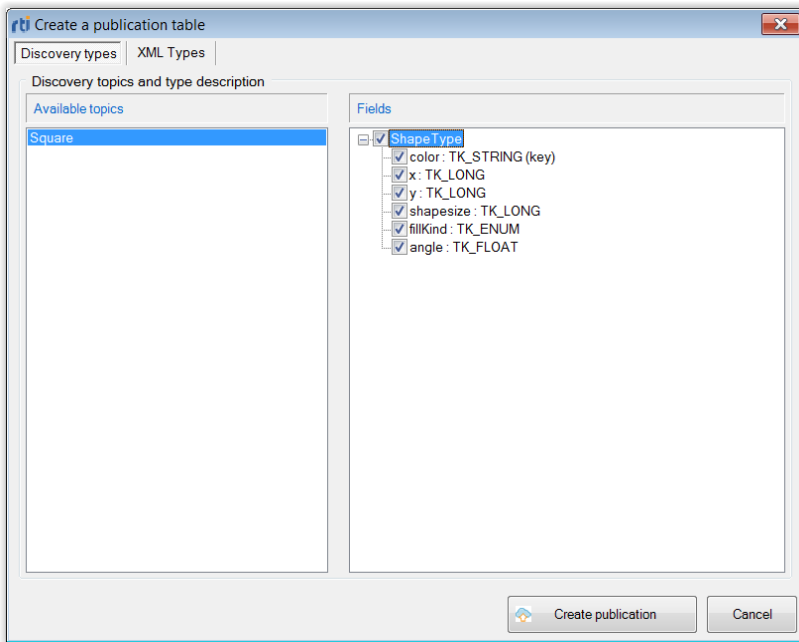
1. [2.5.1 Creating a Publication Table below](#)
2. [2.5.2 Filling in the Data to be Published on page 19](#)
3. [2.5.3 Publishing the Data on page 20](#)


### 2.5.1 Creating a Publication Table

To begin, select a cell (or a range of cells) in the worksheet where you want the publication to be. Then, from the Spreadsheet Add-in toolbar, select  **RTI Add Publication** .

Click a topic from the list on the left, then select the fields that you want to fill in. Unselected fields will still be published, but will be set to their default values (numerical fields will be set to 0, strings will be empty). By default, all fields in the data type are selected.

You may see more than one type with the same name. In this case, one type is the base type and others are extended versions of the base type—see [2.7 Integration with Extensible Types on page 24](#). You can only select one type at a time.



When you click  **Create publication**, the add-in creates a publication table at the selected cell(s) in the worksheet. For example:

The table contains three rows of table header.

Each row holds the data for one sample.

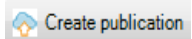
| 1 | PUBLICATION Topic: Square   Type: ShapeType |   |   |          |          |       |
|---|---|---|---|----------|----------|-------|
| 2 | color*,x,y,shapsize,fillKind,angle          |   |   |          |          |       |
| 3 | color                                       | x | y | shapsize | fillKind | angle |
| 4 |   |   |   |          |          |       |
| 5 |   |   |   |          |          |       |
| 6 |   |   |   |          |          |       |
| 7 |   |   |   |          |          |       |
| 8 |   |   |   |          |          |       |

Each selected field in the data type appears in its own

The publication table is a range of cells that represent a topic—each row will be a sample, with a column for each field that you want to fill in.

**To Control the Publication Table Size:**

The number of rows in the table depends on what is selected on the worksheet when you first click



- If only one cell is selected (the default case), a table with a height of seven is created, allowing you to enter four samples.

- If two or three rows are selected, a table with a height of four will be created, allowing you to enter one sample.
- If four or more rows are selected, the table height will match the rows that you have selected.

The number of columns in the table depends on the number of fields you select for the topic. If your data type has more than 16,385 fields, you will not be able to select all of them. This limit is imposed by Excel, which has a maximum table size of 65,536 rows by 16,385 columns. This limit may restrict where you can start the publication. For instance, you cannot select a cell in the 16,384th column and put a publication wider than 1 column there.

The table size is fixed once the publication is created, and it will not change over time.

Like all tables created by the add-in, no new rows or columns are inserted into the worksheet. Instead, the content of the existing cells are overwritten, with the top left corner of the table at the current cell.

**To remove a publication table:** Delete the worksheet or the whole table.

If you want to know when the actual writer that publishes the topic is created/deleted behind the scenes, see [Appendix C Entity Creation and Destruction on page 49](#).

## 2.5.2 Filling in the Data to be Published

Once you have the table, you can fill in the cells as desired either by explicitly entering values in the cells, or by entering valid Excel formulas. You can even use references to subscriber cells elsewhere in the Excel workbook.

If you leave a sample row unfilled, that sample will not be published.

### 2.5.2.1 Working with Unions

Unions require that a field is selected among the possible ones; this is done by setting a value in the discriminator cell, **<field name>\_d**. You can set this cell to different values. For example:

```
enum EnumType {
    ENUM_1,
    ENUM_2,
    ENUM_3
};
union EnumTypeUnion switch (EnumType) {
case ENUM_1:
    long enum1Field;
case ENUM_2:
    double enum2Field;
default:
    short enum3Field;
};
union CharacterUnion switch(char) {
case 'a':
    short aShort;
```

```

default:
    char defaultChar;
};
union LongUnion switch(long) {
case 42:
    float float42;
default:
    double defaultDouble;
};



```

There are several ways to specify the selected field:

- Set the name of the field directly in the discriminator cell. For example, to select **enum3Field** this name can be set directly as the discriminator value.
- To select the default field of a union (e.g. **enum3Field** in EnumTypeUnion, **defaultChar** in CharacterUnion, or **defaultDouble** in LongUnion), leave the value of the discriminator cell empty, or set it to the string "**default**".
- If the union is based on an enumeration type, like the type EnumTypeUnion above, you can specify the desired enumerator directly, as text. For instance, setting the discriminator cell to **ENUM\_1** will cause the field **enum1Field** to be published.
- If the union is based on a character, setting the discriminator cell to a simple character will select the associated field. In the CharacterUnion example above, setting the cell to "a" will select the field **aShort**.
- If the union is based on a numeric type, such as a long, you can set the discriminator to a numeric value. For example, in type LongUnion, setting the field to 42 will result in selecting field **float42**.
- If the union is based on the boolean type, you can use the values **true** and **false**. The case won't matter, although Excel automatically converts the strings **true** or **false** to upper case.

## 2.5.3 Publishing the Data

There are two ways to publish data from the table:

- To manually publish the data *once*, select  RTI Publish Now from the Spreadsheet Add-in toolbar).
- To automatically publish the data at a constant rate, set a timer:
  1. From the Spreadsheet Add-in toolbar, select  RTI Config .
  2. Set the **Auto publish timer** (in milliseconds) as desired.

**Note:** The interval must be greater than or equal to the **RTDThrottleInterval** value set in the registry (see [A.2 Changing the Excel Throttle Interval, RTDThrottleInterval on page 43](#)). Otherwise, the add-in will automatically set the auto publish timer equal to **RTDThrottleIn-**



**terval.**

3. Press **Start** and **Close**.

By default, a sample is published only if any cell in the row for that sample has changed since the last time it was published. However, you can change this behavior by changing the add-in configuration parameter, so that filled-in samples are published regardless of whether the sample has changed since the last time it was published. See [Chapter 3 Configuring the Spreadsheet Add-in on page 31](#) for details.


**Tip:** To verify that the data was published, you can use a topic monitor (see [2.3 Monitoring Topics on page 8](#)).

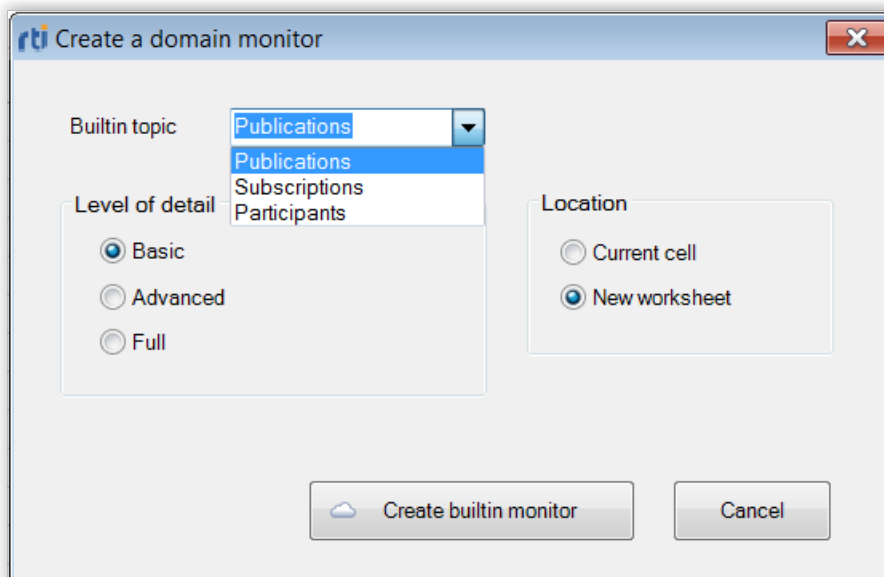
## 2.6 Monitoring Built-in Topics

The add-in must discover and keep track of remote entities, such as new participants, publications or subscriptions in the domain. This information may also be important to the application itself, which may want to react to this discovery information, or else access it on demand. To support these needs, the add-in provides built-in Topics that you can use to access this discovery information.

You can use a ‘built-in topic monitor’ to display built-in topics for discovered publications, subscriptions, and participants.

**Note:** Only *remote* entities appear in builtin topics. Entities created by the *same* participant (in this case, the *Spreadsheet Add-in for Microsoft Excel* application) will not appear in the builtin topic.

From the Spreadsheet Add-in toolbar, select  **RTI Monitor Domain**, then select one of the builtin topics (publications, subscriptions, or participants) from the drop-down list box.



**Builtin topic**

- There are three types of builtin topics that provide discovery information about three different entity kinds: Publications, Subscriptions and Participants.

**Level of detail**

- The level of detail (basic, advanced, or full) controls how much data (how many columns) will be shown in the builtin topic monitor table.

See the *Connex DDS API Reference HTML* documentation on builtin topic data for details of the meaning of these fields.

**Basic:**

- Publications/Subscriptions builtin topic:

Host IP, Creation timestamp, Deletion timestamp, Entity kind, Topic, Type

- Participants builtin topic:

Host IP, Creation timestamp, Deletion timestamp, Participant name, Product version, RTPS version

**Advanced:** includes all basic information, plus:

- Publications builtin topic:

Reliability, durability, partition, ownership, ownership strength, liveliness, liveliness lease duration, deadline

- Subscriptions builtin topic:

Reliability, durability, partition, ownership, liveliness, liveliness lease duration, deadline, contentfilter

- Participants builtin topic:

RTPS vendor ID, User data, Property QoS, DDS Builtin endpoints, Default unicast locators

**Full:** includes all advanced information, plus:

- Publications builtin topic:

Durability\_service, latency\_budget, lifespan, destination\_order, presentation, user\_data, topic\_data, group\_data, property\_qos, unicast\_locators, product\_version, rtps\_protocol\_version, rtps\_vendor\_id, disable\_positive\_acks


- Subscriptions builtin topic:

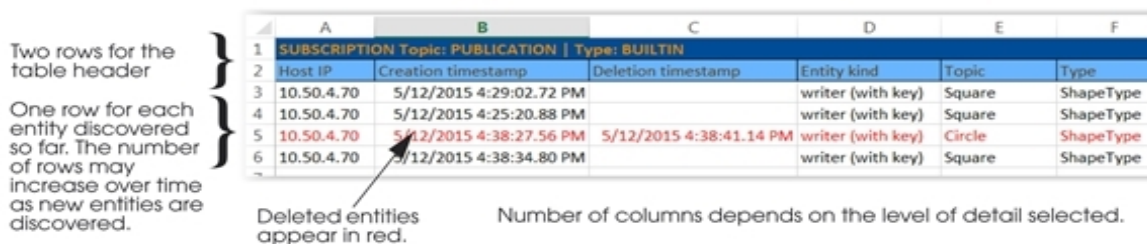
Time\_based\_filter, latency\_budget, destination\_order, presentation, user\_data, topic\_data, group\_data, property\_qos, unicast\_locators, multicast\_locators, product\_version, rtps\_protocol\_version, rtps\_vendor\_id, disable\_positive\_acks

- Participants builtin topic: Same information as advanced level.

## Location

- Choose where the instances will be populated—in the currently selected cell or a new worksheet. By default, the new worksheet option is selected.
- Keep in mind that each time a new entity is discovered, a new row will be added at the bottom of the builtin topic monitor table. Therefore, the height of the table may grow over time.
- Like all tables created by the add-in, no new rows or columns are inserted into the worksheet. Instead, the content of the existing cells are overwritten, with the top left corner of the table at the current cell if the “**Current cell**” option is selected.
- Excel limits the table size to 65,536 rows by 16,385 columns. This limit may restrict where you can start the builtin topic monitor table. For instance, you cannot select a cell in the 16,384th column and put a builtin topic monitor table there to show Full details.

When you click , the add-in creates a builtin topic monitor table—either in the currently selected cell or in a new worksheet (depending on your Location option). For example:



Two rows for the table header

One row for each entity discovered so far. The number of rows may increase over time as new entities are discovered.

Deleted entities appear in red.

Number of columns depends on the level of detail selected.

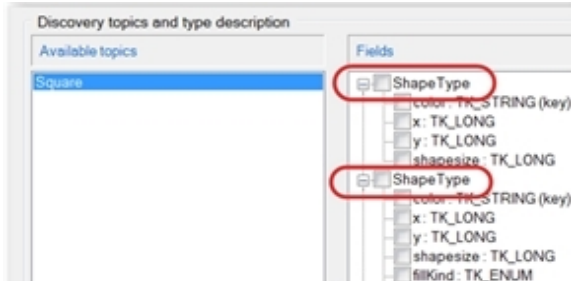
| 1 | SUBSCRIPTION Topic: PUBLICATION   Type: BUILTIN |                         |                         |                   |        |           |
|---|---|-------------------------|-------------------------|-------------------|--------|-----------|
| 2 | Host IP   | Creation timestamp      | Deletion timestamp      | Entity kind       | Topic  | Type      |
| 3 | 10.50.4.70                                      | 5/12/2015 4:29:02.72 PM |                         | writer (with key) | Square | ShapeType |
| 4 | 10.50.4.70                                      | 5/12/2015 4:25:20.88 PM |                         | writer (with key) | Square | ShapeType |
| 5 | 10.50.4.70                                      | 5/12/2015 4:38:27.56 PM | 5/12/2015 4:38:41.14 PM | writer (with key) | Circle | ShapeType |
| 6 | 10.50.4.70                                      | 5/12/2015 4:38:34.80 PM |                         | writer (with key) | Square | ShapeType |

**To remove a builtin topic monitor table:** Delete the worksheet or the whole builtin topic monitor table. If you want to keep the existing cells for information on entities that are already discovered, but not receive any new entities’ discovery information, delete the header cell—this will stop the table from being updated.

**If you see a red row:** This means we have detected that the entity has been deleted by the remote application, or the discovery information for that entity has not be updated according to the contract, and therefore the entity is no longer consider to be alive.

## 2.7 Integration with Extensible Types

Some of the add-in's dialogs<sup>1</sup> display a list of available topics. When you select a topic, you will see its data type and the fields within that data type.



In the Fields section, you may see more than one type with the same name. This indicates that the applications you are communicating with are using the Extensible Types feature in *Connex DDS*. With this feature, there may be more than one ‘version’ of a data type: a base type and one or more extended types.

### What are Extensible Types?

*Connex DDS* includes partial support for the "Extensible and Dynamic Topic Types for DDS" specification from the Object Management Group (OMG). With Extensible Types, more than one version of the same type can be found in the DDS cloud. This support allows systems to define data types in a more flexible way, and to evolve data types over time without giving up portability, interoperability, or the expressiveness of the DDS type system.

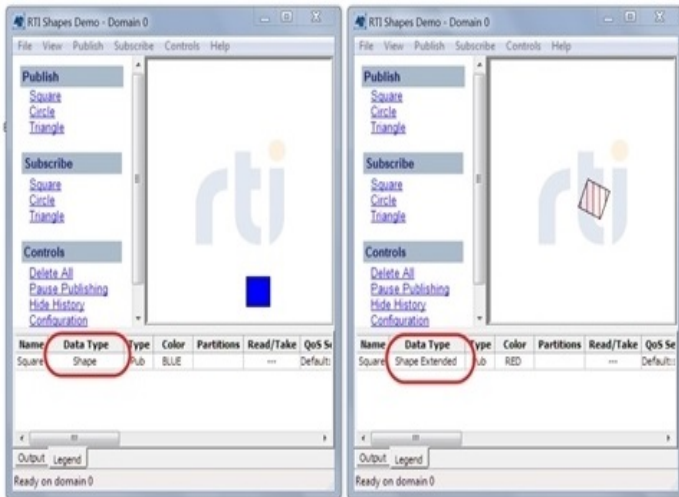
You can learn more in the [RTI Connex DDS Core Libraries Extensible Types Guide](#). The OMG specification is available here: [OMG 'Extensible and Dynamic Topic Types for DDS' specification, version 1.3](#).

Let's consider an example using *RTI Shapes Demo*<sup>2</sup> (which is also used in the tutorial in the *Getting Started Guide*). *Shapes Demo* can publish/subscribe to either a simple (base) Shape type or an extended Shape type. Both types have the same type name: ShapeType. The extended version includes the same data as the base type, plus two more fields: **fillKind** and **angle**.

Suppose you are running one instance of *Shapes Demo* that is set up to publish blue squares with the base Shape type and a second instance of *Shapes Demo* that is set up to publish red squares with the extended Shape type. The *Shapes Demo* windows might look like these:

<sup>1</sup>The dialogs for Add Subscription, Add Publication, and Monitor Topic list the available topics.

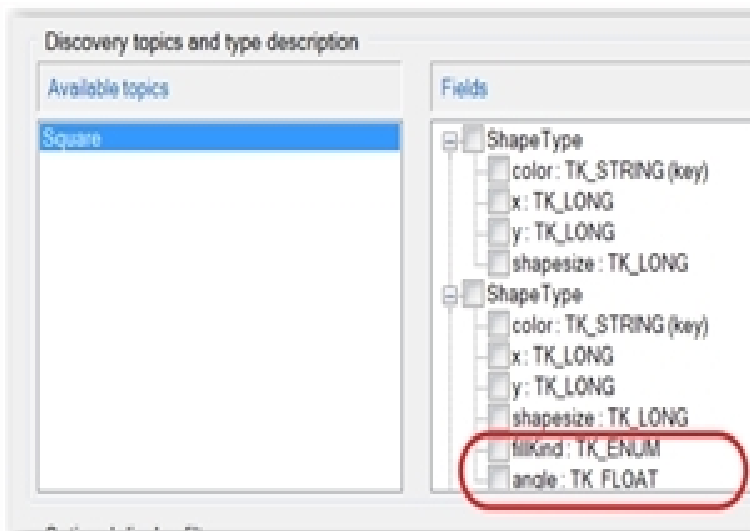
<sup>2</sup>Extensible types are only supported in *Shapes Demo* version 5.0 and higher.



As indicated in the Data Type column, *Shapes Demo* on the left is publishing the base Shape type, while the one on the right is publishing an extended version. Note, however, that each instance of *Shapes Demo* is publishing a data type named **ShapeType**. The Data Type column helps you know which version is being used.

In the Add Subscription dialog, if you select Square on the left (under Topics), you will see “ShapeType” twice on the right (under Fields).

If you expand both ShapeTypes, you will see that one of them has two more fields than the other (fillKind and angle): this is the extended version of ShapeType.



You can only select one of the displayed versions at a time.

When using one of the available versions of a type, if you want to select a different version of the type, you must first stop the Add-in and delete the tables/cells that are using the currently selected type. (To stop the Add-in, click the "Stop RTI Add-in" or use the "RTI Config" dialog.)

If you choose the extended version and select "Create subscription", the results will look like this:

| SUBSCRIPTION Topic: Square   Type: ShapeType |     |     |          |          |       |  |
|--|-----|-----|----------|----------|-------|--|
| color,x,y,shapsize,fillKind,angle            |     |     |          |          |       |  |
| color  | x   | y   | shapsize | fillKind | angle |  |
| RED  | 51  | 201 | 30       | 2        | 70    |  |
| BLUE   | 171 | 216 | 30       | 0        | 0     |  |

Notice that the **fillKind** and **angle** for the blue square are set to default values. That's because the blue square wasn't published with these fields, since it was published with the base version of ShapeType.

However, if you were to create a subscription using the base version of ShapeType, the extra fields for the red square (**fillKind** and **angle**) are ignored, as seen below.

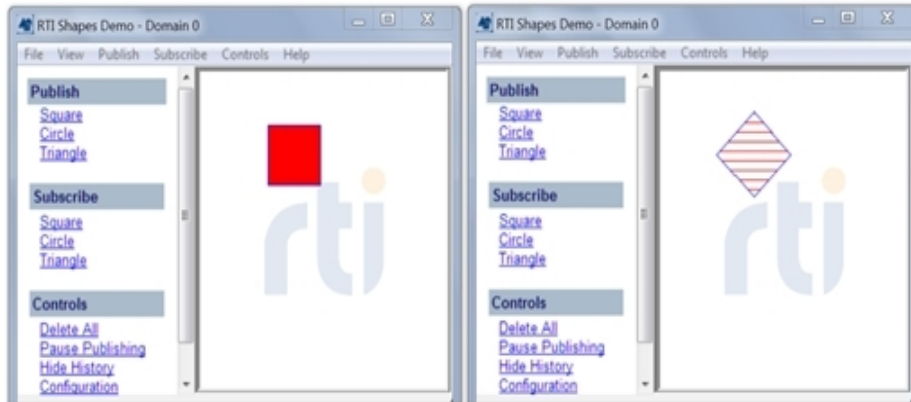
| SUBSCRIPTION Topic: Square   Type: ShapeT |     |     |          |  |
|---|-----|-----|----------|--|
| color,x,y,shapsize                        |     |     |          |  |
| color                                     | x   | y   | shapsize |  |
| RED                                       | 35  | 55  | 30       |  |
| BLUE                                      | 148 | 130 | 30       |  |

In the following example we use *Spreadsheet Add-in* to publish a red square using the extended version of ShapeType. One instance of *Shapes Demo* is subscribing to squares and is configured to use the base version of ShapeType; we'll call this the Base Subscriber. The other instance of *Shapes Demo* is subscribing to squares and is configured to use the extended version; we'll call this the Extended Subscriber. The following image shows that the Extended Subscriber gets all the information (including **fillKind** and **angle**), while the Base Subscriber ignores the extra fields.

|   |   |    |    |          |          |       |
|---|---|----|----|----------|----------|-------|
| 1 | PUBLICATION Topic: Square   Type: ShapeType |    |    |          |          |       |
| 2 | color*,x,y,shapsize,fillKind,angle          |    |    |          |          |       |
| 3 | color                                       | x  | y  | shapsize | fillKind | angle |
| 4 | RED   | 90 | 70 | 50       | 2        | 45    |

Base Subscriber

Extended Subscriber

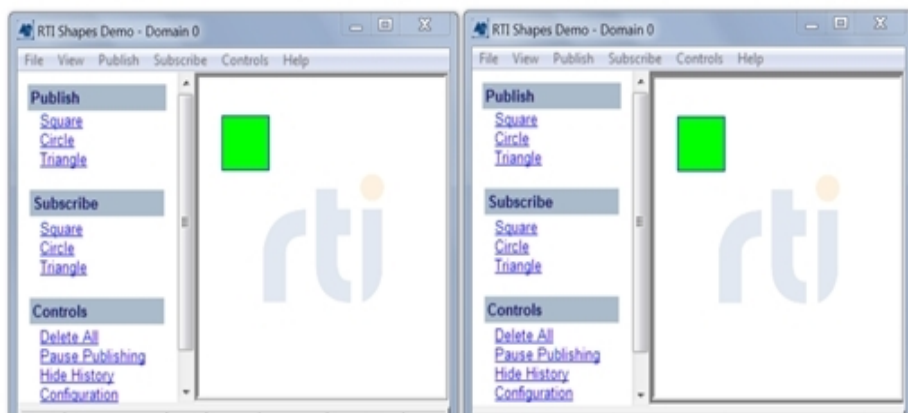


Similarly, when publishing the simple Shape type, the ExtendedSubscriber will set default values for the missing fields, resulting in both *Shapes Demo* instances drawing the same square (the default FillKind is solid and the default rotation is no rotation).

|   |   |    |    |          |
|---|---|----|----|----------|
| 1 | PUBLICATION Topic: Square   Type: Shape |    |    |          |
| 2 | color*,x,y,shapsize                     |    |    |          |
| 3 | color                                   | x  | y  | shapsize |
| 4 | GREEN                                   | 45 | 55 | 45       |

Base Subscriber

Extended Subscriber



## 2.8 Providing Type Definitions in XML

You can select the type to be published or subscribed to via an XML type definition. This can be useful when you want to be perfectly sure about which version of an extensible type the add-in will use. It is also


handy to be able to publish or subscribe without having to wait for discovery to happen.

### 2.8.1 Storing the Type Definitions where the Add-in Expects Them

Once you have a valid XML type definition, you have to copy it to a special location where *Spreadsheet Add-in* will read and parse them during start up. This location is: `<your home directory>\rti_workspace\user_config\spreadsheet_addin\type_library` (for details on `rti_workspace`, see [1.4 Paths Mentioned in Documentation on page 3](#)). At first, this directory may not exist and you'll have to create it manually. Copy all type definitions you want to use to this location and start Excel.

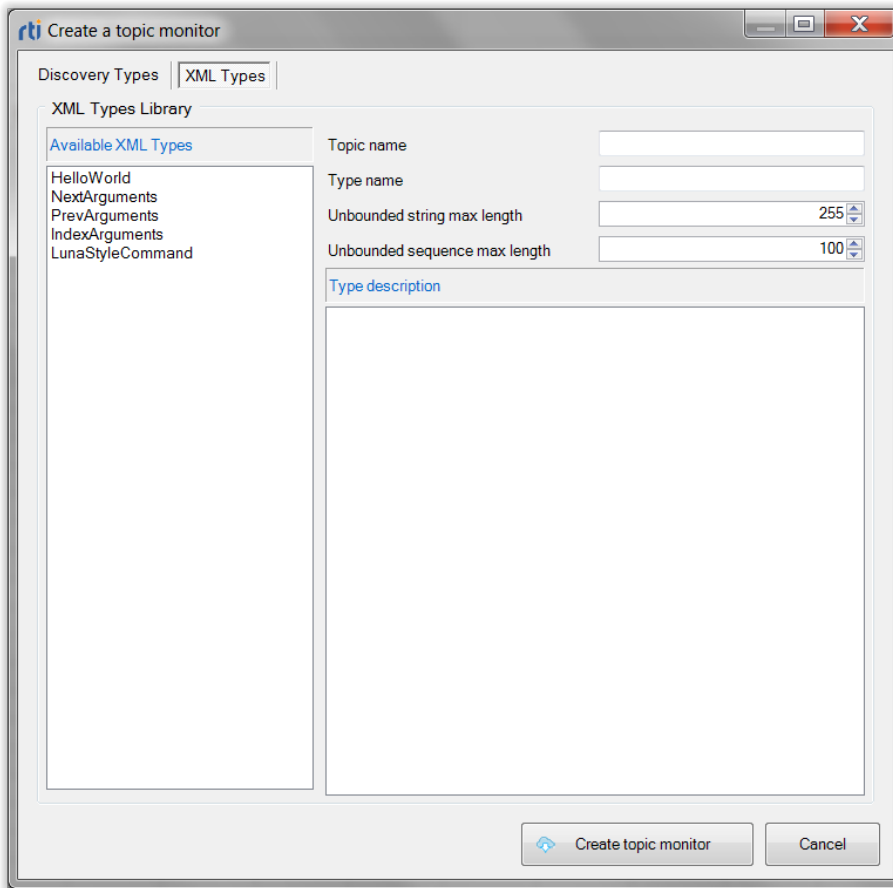
**Note:** *Spreadsheet Add-in* doesn't recheck for new files once it has been started. If you want to add new type definitions after starting Excel, stop the add-in, exit Excel, copy the new type definitions or change the existing ones, and restart Excel. The new or updated type definitions will appear in the type-selection dialogs.


### 2.8.2 Creating a Topic Monitor using XML Types

To create a Topic Monitor using XML types, click on the **RTI Monitor Topic** button  **RTI Monitor Topic**. In the dialog that appears, switch to the **XML Types** tab on top.




You'll see the following dialog:



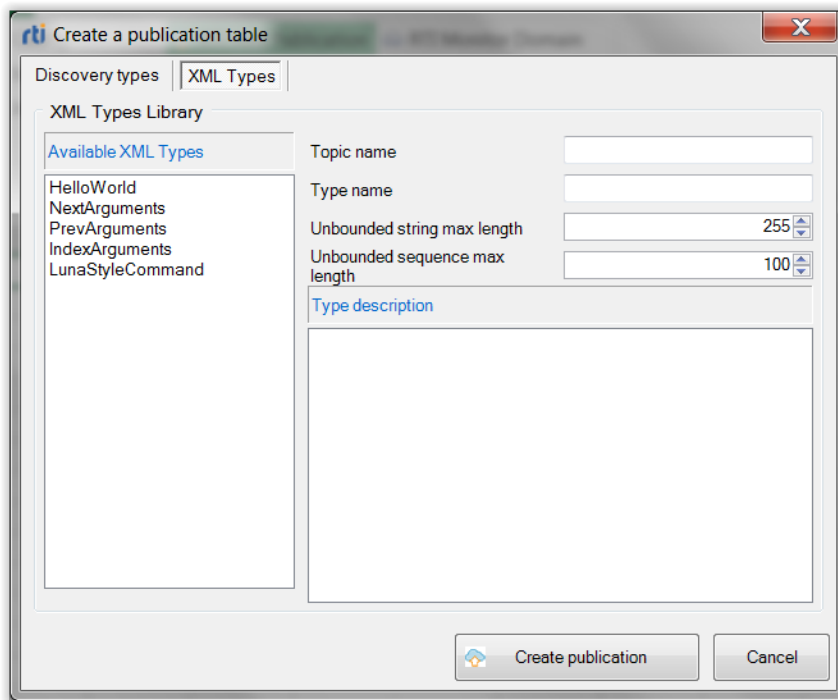
Select the type definition you want to use to create the Topic. A description of the type definition's attributes will appear on the right. Write down the topic name. Optionally, write down the type name, too. If no explicit type name is provided, the default type name taken from the type definition will be used. You can also select the length of the sequences and strings defined with no bounds. When done, click on the **Create Topic Monitor** button .


**Note:** *Spreadsheet Add-in* does not integrate with unbounded sequences and strings. Therefore you need to select a default length for them. Also note that the XML Type selector does not support optional display filters like in the discovery type selector.

## 2.8.3 Creating a Publication via XML

To create a Topic Publication table using XML types, click on the **RTI Add Publication** button  **RTI Add Publication**.

In the dialog that appears, switch to the XML Types tab on top. You'll see the following dialog:



Select the type definition you want to use to create the Topic. A description of the type definition's attributes will appear on the right in the Type description section. Write down the topic name. Optionally, write down the type name too. If no explicit type name is provided, the default type name taken from the type definition will be used. You can also select the length of the sequences and strings defined with no bounds. When done, click on the **Create publication** button  Create publication .

**Note:** *Spreadsheet Add-in* doesn't integrate with unbounded sequences and strings. Therefore, you need to select a default length for them.

# Chapter 3 Configuring the Spreadsheet Add-in

This chapter describes:

- [3.1 Configuration Parameters below](#)
- [3.2 Changing Data Refresh Frequency \(Throttle Interval\) and Auto-Publish Rate on page 38](#)
- [3.3 Using Different Domains at the Same Time on page 39](#)

## 3.1 Configuration Parameters

*Spreadsheet Add-in for Microsoft Excel* has several configuration parameters, as described in [Table 3.1 Configuration Parameters](#). They apply to all open workbooks that use the add-in.

**Table 3.1 Configuration Parameters**

| Parameter  | Description  |
|------------|--|
| Domain ID  | Identifies the domain to which the instance of <i>Spreadsheet Add-in for Microsoft Excel</i> belongs. Each domain represents a separate data 'communication plane' isolated from other domains.<br><br>This value must match the domain ID of the application that you want to communicate with. This is an integer value, 0 or higher. The default is 0. Each Excel instance can only belong to one domain. If you want to use multiple domains, refer to <a href="#">3.3 Using Different Domains at the Same Time on page 39</a> . |
| Peer Hosts | Peer descriptors of potential participants that you want the add-in to try to communicate with. For example:<br>"shmem;udpv4://239.255.0.1;udpv4://127.0.0.1;5@udpv4://foo"<br><br>See the <i>RTI Connex DDS Core Libraries User's Manual</i> or API Reference HTML documentation for details on formatting peer descriptors.  |



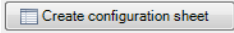

Table 3.1 Configuration Parameters

| Parameter                                   | Description  |
|---|--|
| QoS library and profile                     | <p>Sets the Quality of Service (QoS) policies for all the entities created by the add-in.</p> <p>A QoS library and profile are written in XML format. QoS can be specified per entity kind, or even based on topic name. The XML file containing the QoS library and profile must exist either in <code>&lt;path to user_config&gt;\EXCEL_QOS_PROFILES.xml</code>, or in the file that is specified in the <code>NDDS_QOS_PROFILES</code> environment variable (unless a non-default location is specified in the registry setting; see <a href="#">Appendix D Controlling File Locations with Registry Settings on page 51</a> for details).</p> <p>To open the QoS file under My Documents, select the <b>RTI Config</b> button in the RTI Spreadsheet Add-in toolbar, and then click <b>Open QoS File</b>. The XML file is read-only when Excel starts. If you have made changes to the file after Excel has started, you will need to close and restart Excel for the changes to take effect.</p> <p>See the <i>RTI Connex DDS Core Libraries User's Manual</i> for details regarding QoS library and profile formats.</p> |
| Throttle interval                           | <p>How long to wait before refreshing the received real-time data for all automatic-update subscriptions. This is both (a) the minimum time between cell updates and (b) the maximum time after data is first received before the cell is updated.</p> <p>This value must be greater than or equals to the <code>RTDThrottleInterval</code> value as set in the registry. See <a href="#">A.2 Changing the Excel Throttle Interval, RTDThrottleInterval on page 43</a> for details.</p>  |
| Auto publish timer                          | <p>How often to automatically publish data from a publication. This value must be greater than or equals to the <code>RTDThrottleInterval</code> value as set in the registry. See <a href="#">A.2 Changing the Excel Throttle Interval, RTDThrottleInterval on page 43</a> for details.</p> <p>The auto publish timer is stopped automatically every time the RTI service is stopped. If you restart <i>Connex DDS</i>, you may need to restart the auto publish timer.</p>   |
| RTI Service startup policy                  | <p>Behavior at start up—whether or not the RTI service should be started (if it is not already running) when a workbook with a configuration worksheet is loaded.</p> <p>Starting the RTI service creates a DomainParticipant, starts discovery of types and topics, and starts any defined subscriptions or publications. This will generate network traffic. For information on when these entities are created and destroyed, see <a href="#">Appendix C Entity Creation and Destruction on page 49</a>.</p>  |
| Forced garbage collect rate                 | <p>This is an advanced feature.</p> <p>Typically, memory that is no longer in use will be freed up automatically by the add-in when there is a need. In some special cases, if data is updated at very high rate, or if there is still available memory in your system, the add-in may not free unused memory as fast as you may want it to. This parameter allows you to control how fast the unused memory should be freed up.</p>   |
| Manual update applies to current sheet only | <p>Controls if the <b>RTI Update Now</b> button will update (a) all manual-update subscriptions, or (b) only the manual-update subscriptions in the current worksheet. (All automatic-update subscriptions will be updated regardless).</p>  |
| Publish changed data only                   | <p>Controls if both the <b>Auto publish timer</b> and the <b>RTI Publish Now</b> button will publish samples only if they have been changed since the last time they were published, or will publish regardless of whether the sample has changed or not.</p>  |
| Verbosity                                   | <p>Level of logging. See <a href="#">Table 3.3 Configuration Parameters</a>.</p>   |
| Overwrite log file                          | <p>Specifies if the log file should be overwritten every time Excel starts.</p>  |
| Log file                                    | <p>Full path for the location of the file for logging information for the add-in.</p>  |

**Table 3.1 Configuration Parameters**

| Parameter       | Description  |
|-----------------|--|
| Content filters | <p>Defines filters for given topics, based on the content of the sample of the given data type.</p> <p>These filters, if any, apply to any subscription of the specified topic name. For example: "Type1=ShapeType Topic1=Square Filter1=x&gt;100"</p> <p>See the <i>RTI Connex DDS Core Libraries User's Manual</i> regarding content filter expression syntax.</p> |

There are up to three ways to set these parameters:

- From a configuration file.** The configuration file follows the usual Microsoft Windows **.ini** file syntax. The file is read when Excel starts. This file is located in **<path to user\_config>\RTIExcelAddin.ini**, unless a non-default location is specified in the registry setting (see [Appendix D Controlling File Locations with Registry Settings on page 51](#) for details). To open this file, select  **RTI Config** in the RTI Spreadsheet Add-in toolbar, then click **Open Configuration File**.
- From special cells in a saved workbook.** Configuration parameters can be specified in an Excel worksheet. You can automatically create a worksheet with all the configuration cells based on the current configuration. To do so, select  **RTI Config** in the RTI Spreadsheet Add-in toolbar and select .
- From the configuration dialog.** To open this dialog, select  **RTI Config** in the RTI Spreadsheet Add-in toolbar. **Note:** Not all parameters can be changed in the dialog.

Each of the configuration methods is intended to be used in a different way, as described in [Table 3.2 Configuration Methods](#).

[Table 3.3 Configuration Parameters](#) summarizes how to define each parameter using the three methods.

[Figure 3.2 on page 37](#) shows an auto-generated configuration sheet.

**Table 3.2 Configuration Methods**

| Method             | Typical Use   |
|--------------------|---|
| Configuration file | <p>Default configuration. Applies every time Excel is started, unless you open a workbook with configuration cells. In that case, the parameters present on the sheet will override those in the configuration file. Use the configuration file method for blank workbooks, for testing, or for saved workbooks that do not require a specific configuration. See the sample file in <a href="#">Figure 3.1: Sample Configuration File on page 37</a>. Once Excel is started, changes in the configuration file have no effect. If you want the changes in the configuration file to take effect, close Excel and restart it.</p> |

Table 3.2 Configuration Methods

| Method                             | Typical Use   |
|------------------------------------|---|
| Cells in a configuration worksheet | <p>Configuration for a saved workbook. This method allows you to deploy a workbook as if it was an application and to save the configuration you need for the application to work properly. To create a configuration worksheet based on the current configuration, select the <b>“Create Configuration Sheet”</b> button in the <b>RTI Config</b> dialog.</p> <p>See <a href="#">Figure 3.2: Generated Configuration Worksheet on page 37</a>.</p> <p>If a <i>Connex DDS</i> application has not been started, values specified in the configuration worksheet are loaded when the configuration worksheet is opened. The loaded values will be used for all workbooks in this Excel instance.</p> <p>If a <i>Connex DDS</i> application is already started, opening the configuration worksheet has no effect.</p> <p>Once the configuration worksheet is opened, changes in the configuration worksheet have no effect. If you want the changes in the configuration worksheet to take effect, stop <i>Connex DDS</i>, close the configuration worksheet, and open the configuration worksheet again to reload the values.</p> |
| Configuration dialog               | <p>Use this dialog to change the configuration at run time. This configuration is not persistent and not all values can be changed at run time.</p> <p>The <b>RTI Config</b> dialog can be used to change some parameters at run time. Some parameter changes require that the RTI service is not running, while others can be changed any time and will take effect right away.</p> <p>Only fields that you are allowed to change (depending on whether or not the RTI service is running) will be enabled in the dialog. If a parameter is not available in the RTI Config dialog, it means it cannot be changed at run time.</p> <p>See <a href="#">Figure 3.3: Configuration Dialog on page 39</a>.</p>   |

Table 3.3 Configuration Parameters

| Parameter                                   | Configuration Method                          |   |   | Default <sup>a</sup>   |
|---|---|---|---|--|
|   | File <sup>b</sup>                             | Cells in a Configuration Worksheet <sup>c</sup> | Dialog                                  |  |
| Forced garbage collect rate                 | [Config]<br>ForcedGCRate=<n>                  | RTIDDS_CONFIG_FORCED_GC_RATE                    | N/A                                     | 1000 (force garbage collection after every 1000 refresh of data) |
| Manual update applies to current sheet only | [Config]<br>ManualUpdateCurrentSheet=<yes no> | RTIDDS_CONFIG_MANUAL_UPDATE_CURRENT_SHEET       | Stop <i>Connex DDS</i> before changing. | No (manual update applies to all sheets)                         |

<sup>a</sup>The ‘Default’ column shows the default value that is used if it is not specified by any of the three configuration methods.

<sup>b</sup>To make changes in the configuration file, use this format: [Category] Parameter=value.

<sup>c</sup>These cell names appear in the worksheet automatically when you click “Create Configuration Sheet” from the RTI Config dialog.

**Table 3.3 Configuration Parameters**

| Parameter                 | Configuration Method                             |   |   | Default <sup>a</sup>                     |
|---------------------------|--|---|---|--|
|                           | File <sup>b</sup>                                | Cells in a Configuration Worksheet <sup>c</sup> | Dialog  |  |
| Publish changed data only | [Config]<br>AlwaysPublish=<yes no>               | RTDDS_CONFIG_ALWAYS PUBLISH                     | Stop <i>Connex</i> DDS before changing.   | No (publish changed data only)           |
| Domain ID                 | [DDSSConfig]<br>DomainId = <n>                   | RTIDDS_CONFIG_DOMAINID                          | Stop <i>Connex</i> DDS before changing.   | 0  |
| Peer hosts                | [DDSSConfig]<br>PeerHost = <peer1>[,<peer2> ...] | RTIDDS_CONFIG_PEERHOSTS                         | Stop <i>Connex</i> DDS before changing.   | None (uses default DDS QoS)              |
| QoS Library               | [DDSSConfig]<br>QoSLibrary = <name>              | RTIDDS_CONFIG_QOSLIBRARY                        | Stop <i>Connex</i> DDS before changing.   | None (uses default DDS QoS) <sup>d</sup> |
| QoS Profile               | [DDSSConfig]<br>QoSProfile = <name>              | RTIDDS_CONFIG_QOSPROFILE                        | Stop <i>Connex</i> DDS before changing.   | None (uses default DDS QoS) <sup>e</sup> |
| Throttle interval         | [DDSSConfig]<br>ThrottleInterval = <ms>          | RTIDDS_CONFIG_THROTTLEINTERVAL                  | Can be changed anytime. See <a href="#">3.2 Changing Data Refresh Frequency (Throttle Interval) and Auto-Publish Rate on page 38.</a>                                   | 200 ms                                   |
| Auto publish timer        | [DDSSConfig]<br>AutoPublishTimer=<ms>            | RTIDDS_CONFIG_AUTOPUBLISHTIMER                  | Can be changed before the auto publish timer has started. See <a href="#">3.2 Changing Data Refresh Frequency (Throttle Interval) and Auto-Publish Rate on page 38.</a> | 0 (Off)                                  |

<sup>a</sup>The ‘Default’ column shows the default value that is used if it is not specified by any of the three configuration methods.

<sup>b</sup>To make changes in the configuration file, use this format: [Category] Parameter=value.

<sup>c</sup>These cell names appear in the worksheet automatically when you click “Create Configuration Sheet” from the RTI Config dialog.

<sup>d</sup>The default value of the QoS library in the shipped configuration file is “DefaultLibrary”.

<sup>e</sup>The default value of the QoS profile in the shipped configuration file is “DefaultProfile”.

**Table 3.3 Configuration Parameters**

| Parameter          | Configuration Method  |   |        | Default <sup>a</sup>  |
|--------------------|---|---|--------|---|
|                    | File <sup>b</sup>   | Cells in a Configuration Worksheet <sup>c</sup>   | Dialog |   |
| DDS startup        | [DDSConfig]<br>AutoStartDDS=<yes no>  | RTIDDS_CONFIG_AUTOSTARTDDS  | N/A    | No  |
| String Encoding    | [DDSConfig]<br>StringEncoding = <UTF-8 ISO-8859-1>  | RTIDDS_CONFIG_STRINGENCODING  | N/A    | UTF-8   |
| Verbosity          | [Logging]<br>Verbosity=<n> (n=0..4)   | RTIDDS_CONFIG_VERBOSITY   | N/A    | 3   |
|                    | 0—No messages 3—Like 2, plus information about Entities<br>1—Errors 4—Debugging messages<br>2—Errors and warnings |   |        |   |
| Overwrite log file | [Logging]<br>OverwriteLogFile=<yes no>  | RTIDDS_CONFIG_LOGFILE   | N/A    | yes   |
| Log file           | [Logging]<br>LogFile=<full path of log file>  | RTIDDS_CONFIG_OVERWRITELOG  | N/A    | <My Documents>\RTI Spreadsheet Add-in for Microsoft Excel<br><version>\RTIExcelAddin.log<br>(unless specified in a registry setting. See <a href="#">Appendix D Controlling File Locations with Registry Settings on page 51</a> for details) |
| Content filters    | [ContentFilteredTopics]<br>Type<i> = <type name><br>Topic<i> = <topic name><br>Filter<i> = <filter expression>    | RTIDDS_CONTENTFILTER_TYPE<i>,<br>RTIDDS_CONTENTFILTER_TOPIC<i>,<br>RTIDDS_CONTENTFILTER_FILTER<i> | N/A    | None  |
|                    | <i> starts at 1 and goes up incrementally   |   |        |   |

<sup>a</sup>The ‘Default’ column shows the default value that is used if it is not specified by any of the three configuration methods.

<sup>b</sup>To make changes in the configuration file, use this format: [Category] Parameter=value.

<sup>c</sup>These cell names appear in the worksheet automatically when you click “Create Configuration Sheet” from the RTI Config dialog.



Figure 3.1: Sample Configuration File

```

[Config]
ForcedGCRate=1000
ManualUpdateCurrentSheet=no
AlwaysPublish=no
[DDSConfig]
DomainId=54
PeerHost=shmem;udp4://239.255.0.1;udp4://127.0.0.1;5@udp4://foo
QoSLibrary=MyQoSLib
QoSProfile=MyQoSProfile
ThrottleInterval=100
AutoPublishTimer=0
AutoStartDDS=no
[Logging]
Verbosity=3
OverwriteLogfile=yes
LogFile=c:\RTIExcelAddin.log
[ContentFilteredTopics]
Type1=ShapeType
Topic1=Square
Filter1= x > 100
Type2=ShapeType
Topic2=Circle
Filter2= y < 100

```

Figure 3.2: Generated Configuration Worksheet

| RTI Spreadsheet Add-in for Microsoft Excel 5.3.0 CONFIGURATION |                |       |                   |
|--|----------------|-------|-------------------|
| Domain Id  | 0              |       |                   |
| QoS Library  | ExcelQoSLib    |       |                   |
| QoS Profile  | DefaultProfile |       |                   |
| List of comma-separated discovery peers                        |                |       |                   |
| Throttle interval (ms)   | 100            |       |                   |
| Auto publish timer (ms, 0=off)                                 | 0              |       |                   |
| Auto start DDS (yes/no)  | no             |       |                   |
| Forced GC Rate   | 1000           |       |                   |
| Verbosity (0,1,2,3,4)  | 3              |       |                   |
| Manual Update Current Sheet Only (yes/no)                      | no             |       |                   |
| Publish all, even if no changes (yes/no)                       | no             |       |                   |
| Log file   |                |       |                   |
| Overwrite log file (yes/no)                                    | yes            |       |                   |
| DynamicData max size serialized                                | 4294967295     |       |                   |
| String Encoding  | UTF-8          |       |                   |
|  | Type           | Topic | Filter expression |
| Content filter #1  |                |       |                   |
| Content filter #2  |                |       |                   |
| Content filter #3  |                |       |                   |
| Content filter #4  |                |       |                   |

## 3.2 Changing Data Refresh Frequency (Throttle Interval) and Auto-Publish Rate

### 3.2.1 Update Frequency for Subscribing Cells

In general, a subscription that is created behind the scenes will continuously receive all samples. However, the refresh frequency of the subscribing cell in the spreadsheet is limited by the throttle interval. If the data is received at a higher (faster) rate than is defined by this interval, some of the received samples may not be displayed, or may be displayed at a later time.

The throttle interval value must be greater than or equals to the **RTDThrottleInterval** value set in the registry (see [A.2 Changing the Excel Throttle Interval, RTDThrottleInterval on page 43](#)). Otherwise, the add-in will automatically set the Throttle Interval equal to **RTDThrottleInterval**.

The amount of time between updating *subscribing* cell values is:

$\max(\text{Excel's RTDThrottleInterval}, \text{RTI Spreadsheet Add-in's throttle interval}, \text{time since data was last received})$

**Tip:** If you have a high rate of incoming data and a large number of subscription cells, you may need a higher interval (a lower refresh rate) to prevent Excel from slowing down excessively.

To dynamically change the **Throttle Interval**, select  RTI Config from the RTI Spreadsheet Add-in toolbar.

### 3.2.2 Auto Publish Frequency

If the auto-publisher timer is on, the auto-publish timer interval controls how often data is automatically published. If you are changing the value of the data faster than the auto-publish timer, only some of the samples will be published, and samples may be published at a later time than when you changed it.

The auto-publish interval must be greater than or equal to the **RTDThrottleInterval** value set in the registry (see [A.2 Changing the Excel Throttle Interval, RTDThrottleInterval on page 43](#)). Otherwise, the add-in will automatically set the auto-publish timer equal to **RTDThrottleInterval**.

The amount of time between *publishing* cell values is:

$\max(\text{Excel's RTDThrottleInterval}, \text{RTI Spreadsheet Add-in's auto-publish timer interval}, \text{time since the cell was last changed or published, depending on the "Publish changed data only" setting})$


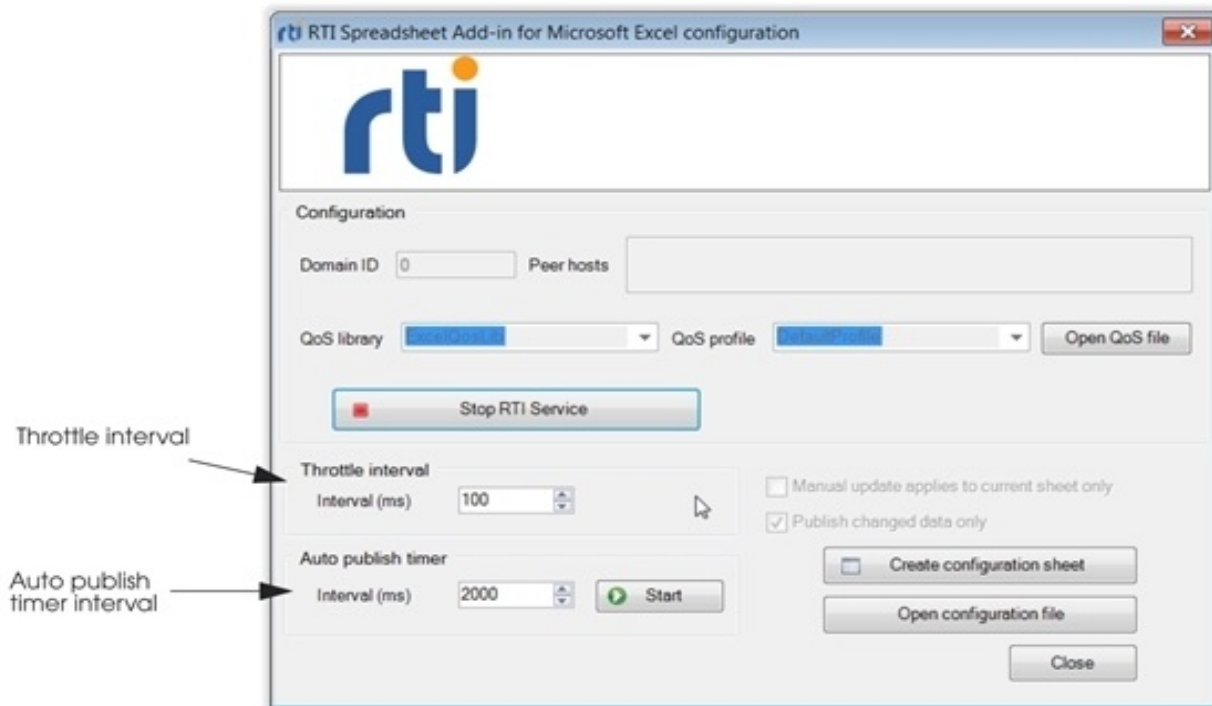
You can dynamically change the auto-publish timer by selecting  RTI Config from the RTI Spreadsheet Add-in toolbar. See [Figure 3.3 on the next page](#) below.

Figure 3.3: Configuration Dialog



### 3.3 Using Different Domains at the Same Time

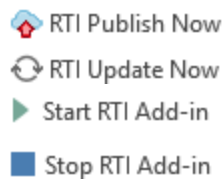
You can work with different configurations (and therefore, different domain IDs) at the same time, by using different Excel instances. Each Excel instance is a separate process that can manage one or more workbooks. Every workbook in the same Excel instance will have the same configuration.

If you open a workbook from Windows Explorer and there is an Excel instance already running, the workbook will be attached to that Excel instance. This may look as if the Excel instance is unresponsive (see [A.4 Spreadsheet Add-in Appears Unresponsive in Excel 2013 on page 45](#)). Therefore, if you want a workbook to use a different configuration, open a new Excel instance (run **Excel.exe** again) and then open the workbook in the new Excel instance.

# Chapter 4 Visual Basic for Applications (VBA) Functions for the Spreadsheet Add-in

Some of the buttons in the Spreadsheet Add-in toolbar perform one-time actions. These buttons do not open an associated dialog box.

This chapter describes how to use macro functions written in Visual Basic for Applications (VBA) to perform the same actions as these buttons:



## 4.1 Enabling Visual Basic Support

A sample Visual Basic script is provided in this file: `<NDDSHOME>\resource\app\lib\<architecture>\DDS2ExcelModule.bas`.

**To use the provided VBA functions in Excel:**

1. Open Visual Basic Editor:

In Excel, under the **Developer** tab, click **Visual Basic**. (If you don't see the Developer tab: right-click in the ribbon, select **Customize the Ribbon...**, select the **Developer** tab, and click **OK**.)

2. Select **Tools, References...** in the Visual Basic menu to open the VBA Project References dialog. Select the checkbox for **DDS2Excel**. Click **OK**.

3. In the Project window in Visual Basic on the top left, right-click **VBAProject** and select **Import File...** from the pop-up menu to import the sample Visual Basic script from `<NDDSHOME>\resource\app\lib\<architecture>\DDS2ExcelModule.bas`.
4. The **DDS2ExcelModule** should now be added to the VBAProject. You can close the Visual Basic Editor.

The VBA functions in the module imported from *Spreadsheet Add-in for Microsoft Excel* are now ready to be used.

## 4.2 Supported VBA Functions

[Table 4.1 Supported Visual Basic Functions in the shipped DDS2ExcelModule](#) summarizes the supported VBA functions in the **DDS2ExcelModule**.

**Table 4.1 Supported Visual Basic Functions in the shipped DDS2ExcelModule**

| Function                               | Typical Use   |
|--|---|
| StartDDS()                             | Starts the add-in, just like the behavior of the <b>Start RTI Add-in</b> button in the RTI Spreadsheet Add-in toolbar. See <a href="#">2.1 The Spreadsheet Add-in Toolbar on page 5</a> for details.  |
| StopDDS()                              | Stops the add-in, just like the behavior of the <b>Stop RTI Add-in</b> button in the RTI Spreadsheet Add-in toolbar. See <a href="#">2.1 The Spreadsheet Add-in Toolbar on page 5</a> for details.  |
| UpdateNowDDS()                         | Checks all DDS automatic-update subscriptions to see if they need to be refreshed with new data. The behavior of this function on manual-update subscriptions depends on whether the add-in is configured to update all manual-update subscriptions, or configured to update only the manual subscriptions in the current worksheet. See <a href="#">Chapter 3 Configuring the Spreadsheet Add-in on page 31</a> for details.<br><br>The behavior of this function is the same as the <b>RTI Update Now</b> button in the RTI Spreadsheet Add-in toolbar. |
| PublishNowDDS()                        | Checks all publications to see if data needs to be published. The behavior of this function depends on whether the add-in is configured to publish a sample only if it has changed since the last time it was published, or configured to publish the sample regardless of whether it has changed or not. See <a href="#">Chapter 3 Configuring the Spreadsheet Add-in on page 31</a> for details.<br><br>The behavior of this function is the same as the <b>RTI Publish Now</b> button in the RTI Spreadsheet Add-in toolbar.                           |
| UpdateCurrentSheetNowDDS()<br>( )      | Checks all DDS automatic-update subscriptions for updates. For manual-update subscriptions, only those in the current worksheet will be checked.  |
| GroupUpdateNowDDS(<br>group As String) | Checks all DDS automatic-update subscriptions for updates. For manual-update subscriptions, only those whose worksheet name matches the one specified by the parameter of this function will be checked. If an empty string is specified (""), this function will update all subscriptions in all worksheets.   |

## 4.3 Using VBA Functions

The add-in VBA functions are like any other VBA functions. You can call the functions directly in any Excel cell by entering the formula `=DDS2ExcelModule.<function_name()>` in any cell. The function is called when the formula is executed. You can also call these functions from any other Excel VBA script, or create GUI buttons and call the VBA function in the button click event.

# Appendix A Troubleshooting

## A.1 License Management

*Spreadsheet Add-in for Microsoft Excel* requires a license file, which you will receive via email from RTI.

If you want to use *RTI Launcher*<sup>1</sup> to start *Spreadsheet Add-in for Microsoft Excel*<sup>2</sup>:

- By default, *Launcher* looks for the license file **rti\_license.dat** in the top-level directory where you installed *Connex DDS*. If you choose to save the license file elsewhere, you can configure *Launcher* to look in a different location by using its **Configuration** tab.

Otherwise:

- Save the license file in any location of your choice. When *Spreadsheet Add-in for Microsoft Excel* starts, it will look in these locations until it finds a valid license:
  1. The file **rti\_license.dat** in the directory *<your home directory>\rti\_workspace\version*.
  2. The file specified in the environment variable `RTI_LICENSE_FILE`, which you may set to point to the full path of the license file, including the filename (for example, `C:\RTI\my_rti_license.dat`).

---

<sup>1</sup>*Launcher* is a convenient GUI-based tool that can start and configure all of your *Connex DDS* components, including *Spreadsheet Add-in for Microsoft Excel*.

<sup>2</sup>Even if your distribution of *Connex DDS Professional* is not license-managed, you always need a license file to run *Spreadsheet Add-in for Microsoft Excel*.

3. The file **rti\_license.dat** in the current working directory.
4. The file **rti\_license.dat** in the directory specified by the environment variable NDDSHOME.

As *Spreadsheet Add-in for Microsoft Excel* attempts to locate and read your license file, you may (depending on the terms of the license) see a window with messages with details about your license—you may close the window.

If the license file cannot be found or the license has expired, *Spreadsheet Add-in for Microsoft Excel*, will not initialize and you will not be able to use the add-in.

If you have any questions about license installation, please contact [support@rti.com](mailto:support@rti.com).

## A.2 Changing the Excel Throttle Interval, RTDThrottleInterval

This section describes changes that *Spreadsheet Add-in for Microsoft Excel* makes to **RTDThrottleInterval** in the registry, a parameter that determines how fast Excel updates real-time data streams.

By default, Excel uses a value of 2 seconds for **RTDThrottleInterval**. The installer for *Spreadsheet Add-in for Microsoft Excel* changes **RTDThrottleInterval** in the registry to 100 milliseconds. This value affects all real-time data feeds that you may be using in Excel.

If you need a different value for **RTDThrottleInterval**, you can change it as follows:<sup>1</sup>

### Microsoft Excel 2010:

1. Open the Windows registry editor.
  - On a Windows 7 or later system, select **Start** and type “**regedit**”.
2. Go to the following key: **HKEY\_CURRENT\_USER, Software, Microsoft, Office, <your version of Microsoft Office>, Excel, Options**.
3. Look up the entry **RTDThrottleInterval** and change its value as needed (in milliseconds).
4. Close the registry editor.

### Microsoft Excel 2013 and later versions:

1. Open Excel.
2. Open the **Visual Basic Editor**, by clicking Visual Basic Editor from the **Developer Tab**
3. Open the Immediate window in **View, Immediate Window**.
4. Type the following and press ENTER:

---

<sup>1</sup>We recommend creating a backup before doing any modification on Windows' registry.

```
Application.RTD.ThrottleInterval = 100
```

5. Verify that it is set correctly, by typing this line in the Immediate window:

```
? Application.RTD.ThrottleInterval
```

**RTDThrottleInterval** is the upper limit for the rate at which **all** data will be updated in Excel (that is, it is the smallest update interval). This value cannot be changed dynamically and applies to all data.

If you want to adjust the throttle interval for updating **DDS** data only, it can be changed after *Spreadsheet Add-in for Microsoft Excel* has been installed. To lower the update rate for DDS data in all worksheets, set the DDS-specific data throttle interval to a value larger than **RTDThrottleInterval**.

The maximum rate (minimum interval) at which DDS data can be automatically published is also limited by **RTDThrottleInterval**. This auto-publish rate can also be adjusted after *Spreadsheet Add-in for Microsoft Excel* has been installed.

See the *Spreadsheet Add-in for Microsoft Excel User's Manual* for details on adjusting the DDS data send and receive rate.

## A.3 Spreadsheet Add-in does not Appear in Excel ADD-INS Tab

After installing *Spreadsheet Add-in for Microsoft Excel*, you should see it in the Excel **ADD-INS** tab. If you do not, here are some possible reasons why and how to fix them:

- Missing language package: Because of Microsoft issue KB320369 (<http://support.microsoft.com/kb/320369>), *Spreadsheet Add-in for Microsoft Excel* will not work at all in computers with a locale other than English (United States). To fix this issue, you need to install a Microsoft Office Language Pack for the corresponding locale in the client machine. See the *Spreadsheet Add-in for Microsoft Excel Release Notes* for more details.
- Date set to Non-US format: If your system's Region and Language format is not set to **English (United States)**, the add-in will not show up. To verify and/or change the format: From the **Start** menu, select **Control Panel; Clock, Language, and Region; Change the date, time, or number format**. If the format is not **English (United States)**, use the Format list to select this setting.
- Missing license: Follow the instructions in [A.1 License Management on page 42](#) to install the license in a correct location.

### A.3.1 Enabling Spreadsheet Add-In After Recovering from a Loading Error

When a COM Add-in is disabled once by Excel, it will remain disabled until manually re-enabled. This could likely happen because of an error when loading any COM Add-in.



**To re-enable *Spreadsheet Add-in for Microsoft Excel*:**

1. Open the **FILE** menu in Excel and select **Options**.
2. In the window that will pop-up, go to **Add-Ins**.
3. In the drop-down menu labeled as **Manage**, select **COM Add-Ins** and click **Go...**
4. A new window will show up with a list of the COM Add-ins installed, and with a check box indicating whether the Add-in is enabled or not.

If *RTI Spreadsheet Add-in for Microsoft Excel* is unchecked, check it and click **OK**.

## **A.4 Spreadsheet Add-in Appears Unresponsive in Excel 2013**

When using *Spreadsheet Add-in* with Excel 2013, you may find that the Add-in bar looks unresponsive. This may be caused by have several workbooks open at the same time. If you look at the workbook that was opened first, you will see *Spreadsheet Add-in* responding as expected. This is due to a change in Microsoft Excel policy regarding process and thread management.

To open several workbooks and have *Spreadsheet Add-in* be responsive in all of them, you will need to manually force each workbook to be run in individual instances of Excel 2013. There are two ways to open individual instances of Excel: from the taskbar or desktop icon, or from a command prompt.

**To open individual instances of Excel using the taskbar or desktop icon:**

1. Right-click the Excel 2013 icon on your desktop or taskbar, keeping the ALT key pressed.
2. Without releasing the ALT key, click on the “Microsoft Excel 2013” option from the context menu.
3. You will see a prompt asking if you want to open Excel as a new instance. Choose YES.
4. Once the new Excel instance is up and running, open an existing workbook or create a new one.
5. Repeat these steps for each workbook you need.

**To open individual instances of Excel from a command prompt:**

1. From the command prompt, run **EXCEL /X &**. (The /X option forces the creation of a new instance.)
2. Once the new Excel instance is up and running, open an existing workbook or create a new one.
3. Repeat these steps for each workbook you need.

## Appendix B Subscribing to Data with Real-Time Data (RTD) Function

The most basic and flexible way to subscribe to data for a cell is to use the RTD function in Excel

```
=RTD(<ProgID>, <server>, <param1>, [<param2>],...)
```

The RTD function is the building block for most of the features in *Spreadsheet Add-in for Microsoft Excel*. It is used as follows:

```
=RTD("dds2excel.connect", ,  
    "TYPE:<type_name>", "TOPIC:<topic_name>",  
    "TYPENAME:<type_version_name>",  
    "FIELD:<field_name1>"  
    [, "KEY:<field_name2>=<value2>" [,  
    "KEY:<field_name3>=<value3>" ...]]  
    [, "MANUAL:<sheet_name>"])
```

- The first parameter is the program ID of *Spreadsheet Add-in for Microsoft Excel*, “**dds2excel.connect**”.
- The second parameter is blank. RTD uses this as the name of the server where the add-in should be run. Since we want to run locally, we leave it blank.
- The remaining parameters combine to define a piece of real-time data. There may be up to 38 of these parameters.

Notice that there is a `TYPE` parameter and a `TYPENAME` parameter. The `TYPENAME` refers to the name for a specific type-definition of a data type, as defined using any of the type-definition languages provided with *Connex DDS* (such as IDL or XML).

For example, suppose you have this type defined in IDL:

```
struct TypeName1 {  
    long aField;  
}
```

Along with a second, extended type:

```
struct TypeName2 : TypeName1 {
    double extendedField;
}
```

To subscribe to the first type, use “TYPE:TypeName1” and “TYPENAME:TypeName1”. To subscribe to the second type, use “TYPE:TypeName1” and “TYPENAME:TypeName2”. For more information, see [2.7 Integration with Extensible Types on page 24](#).

As another example, consider the *RTI Shapes Demo* application, which can publish/subscribe to either ShapeType and ShapeTypeExtended. In both cases, the type registered with *Connex DDS* is “ShapeType”, but they are defined in IDL with different names, like this.

```
enum ShapeFillKind {
    SOLID_FILL,
    TRANSPARENT_FILL,
    HORIZONTAL_HATCH_FILL,
    VERTICAL_HATCH_FILL
};
struct ShapeType
{
    string<128> color; //@key
    long x;
    long y;
    long shapesize;
};
struct ShapeTypeExtended : ShapeType {
    ShapeFillKind fillKind;
    float angle;
};
```

The following function will subscribe to instances of the topic Square, of type ShapeType, whose key field, **color**, is PURPLE. This cell will show the value of the field **x**.

```
=RTD("dds2excel.connect", ,
"TYPE:ShapeType", "TOPIC:Square", "TYPENAME:ShapeTypeExtended",
"FIELD:x", "KEY:color=PURPLE")
```

The RTD function is case-sensitive (for example, color=PURPLE is different than color=Purple). Do not use quotation marks within the expression.

The optional “**MANUAL**” parameter in the RTD function can be used to indicate that the cell will be updated manually only when the **RTI Update Now** button is pressed, instead of periodically being refreshed with new data. The <sheet\_name> followed by the optional **MANUAL** parameter in the RTD function is filled in automatically with the name of the worksheet in which the cell resides, either when *Connex DDS* is first started or when the RTD function is created by the subscription. The sheet name information is used if the **RTI Update Now** button is configured to refresh manual-update subscriptions in the current sheet only. (If you copy a manual-update cell from one sheet to another, the RTD function will contain the wrong sheet-name unless you manually modify the RTD function, or you restart *Connex*

*DDS*.) See [Chapter 3 Configuring the Spreadsheet Add-in on page 31](#) for information on manual-update subscriptions.

You can use references to a cell containing the RTD function just like any other cell—for charts, other formulas, etc.

## Appendix C Entity Creation and Destruction

The following table explains when *Spreadsheet Add-in for Microsoft Excel* creates and destroys the entities it uses.

All entities are created with the QoS values as specified in the `RTIDDS_CONFIG_QOSLIBRARY` and `RTIDDS_CONFIG_QOSPROFILE` configuration parameters. (The QoS library and profile are either in `<path to user config>EXCEL_QOS_PROFILES.xml` or in a file that is specified in the `NDDS_QOS_PROFILES` environment variable, unless the location of the XML file is hard-coded in the registry setting. See [Appendix D Controlling File Locations with Registry Settings on page 51](#) for details).

| This Entity ...   | Is Created ...   | Is Destroyed ...   |
|-------------------|--|--|
| DomainParticipant | <p>When the <i>Connex DDS</i> application starts. This can happen two ways:</p> <ul style="list-style-type: none"> <li>• When Excel is started and a workbook is opened—if the “auto-start DDS” option is enabled.</li> <li>• When you start <i>Connex DDS</i>.</li> </ul> | <p>When the <i>Connex DDS</i> application stops. This can happen two ways:</p> <ul style="list-style-type: none"> <li>• When Excel is closed.</li> <li>• When you stop <i>Connex DDS</i>.</li> </ul> |
| Subscriber        | <p>When the DomainParticipant is created.</p> <p>There is only one Subscriber per DomainParticipant.</p>   | <p>When the DomainParticipant is deleted.</p>  |
| Publisher         | <p>Just before the first sample is published.</p> <p>There is only one Publisher per DomainParticipant.</p>  |  |

| This Entity ...               | Is Created ...  | Is Destroyed ...  |
|-------------------------------|---|---|
| <p>DataReader for Topic T</p> | <p>When any of these occur:</p> <ul style="list-style-type: none"> <li>• A topic monitor for Topic T is created.</li> <li>• An RTD function for Topic T is entered.</li> <li>• <i>Connex DDS</i> starts and there are one or more topic monitors, subscriptions, or RTD functions for Topic T.</li> </ul> <p>There is at most one DataReader per Topic.</p> | <ul style="list-style-type: none"> <li>• If there is no active topic monitor for Topic T: when the last RTD function for Topic T is deleted.</li> <li>• If there is no RTD function for Topic T: when the last topic monitor for Topic T is deleted.</li> <li>• When the DomainParticipant is deleted (which can happen either when <i>Connex DDS</i> is stopped or when Excel is closed).</li> </ul> <p>Note: Each cell created by a topic monitor or subscription is an RTD function.</p> |
| <p>DataWriter for Topic T</p> | <p>Just before a sample of Topic T is first published.</p> <p>There is at most one DataWriter per Topic.</p>  | <p>When the Publisher and DomainParticipant are deleted.</p>  |

# Appendix D Controlling File Locations with Registry Settings

When *Spreadsheet Add-in for Microsoft Excel* is first loaded as Excel starts up, there are three files that the add-in will be accessing:

- The add-in configuration file
- The file(s) containing QoS libraries and profiles
- The log file for recording add-in specific information

By default, the add-in will access these files in the user's profile under **<path to user\_config>**.

However, it is possible to change the default location of these files by changing the registry settings. This can be useful if you want to make sure everyone uses the same configuration.

[Table D.1 Default Filenames and Registry Settings](#) summarizes the default filename in the user's profile and the corresponding registry setting that can be used to change the default location.

**Table D.1 Default Filenames and Registry Settings**

| File               | Default filename under<br>My Documents\RTI Spreadsheet Add-in for<br>Microsoft Excel <version> | String value under Registry key<br>Software\RTI\ExcelPlugin<br>to overwrite default file location <sup>a</sup> |
|--------------------|--|--|
| Configuration file | RTIExcelAddin.ini  | IniFile  |

---

<sup>a</sup>The registry key contains string values that contain the full path of each file, including file name. The registry keys can be specified either in HKEY\_LOCAL\_MACHINE or HKEY\_CURRENT\_USER (the former has higher precedence).

**Table D.1 Default Filenames and Registry Settings**

| File                              | Default filename under<br>My Documents\RTI Spreadsheet Add-in for<br>Microsoft Excel <version> | String value under Registry key<br>Software\RTI\ExcelPlugin<br>to overwrite default file location <sup>a</sup> |
|-----------------------------------|--|--|
| QoS Profiles<br>file <sup>b</sup> | EXCEL_QOS_PROFILES.xml   | QosProfiles  |
| Log file                          | RTIExcelAddin.log  | LogFile  |

To modify/add the registry, go to the Windows Start menu and select **Accessories, Run**. Type **regedit**. This will open the registry editor, where you can add/modify a registry key and the string value within a registry key.

When Excel starts up and *Spreadsheet Add-in for Microsoft Excel* is loaded, the add-in first looks for the registry keys under **HKEY\_LOCAL\_MACHINE**. If the registry key for the file is not found, it will then look under **HKEY\_CURRENT\_USER**. If the registry key for the file is still not found, the default location under the user's profile is assumed. The three files can be specified independently in the registry.

By default, the installer for *Spreadsheet Add-in for Microsoft Excel* does not write any of these values in the registry. Therefore, the files are loaded from the user's profile by default.

---

<sup>a</sup>The registry key contains string values that contain the full path of each file, including file name. The registry keys can be specified either in **HKEY\_LOCAL\_MACHINE** or **HKEY\_CURRENT\_USER** (the former has higher precedence).

<sup>b</sup>If the registry key for the QoS Profile file is not specified, other than just reading the QoS profiles and libraries in the file under the user's profile default location, we also look for the file specified in the **NDDS\_QOS\_PROFILES** environment variable. If the registry key for the QoS profile is specified, only the file specified in the registry key will be read—the **NDDS\_QOS\_PROFILES** environment variable will have no effect.