

# **RTI Launcher**

**Release Notes**

**Version 6.1.2**



© 2022 Real-Time Innovations, Inc.  
All rights reserved.  
Printed in U.S.A. First printing.  
December 2022.

## Trademarks

RTI, Real-Time Innovations, Connex, NDDS, the RTI logo, 1RTI and the phrase, “Your Systems. Working as one.” are registered trademarks, trademarks or service marks of Real-Time Innovations, Inc. All other trademarks belong to their respective owners.

## Copy and Use Restrictions

No part of this publication may be reproduced, stored in a retrieval system, or transmitted in any form (including electronic, mechanical, photocopy, and facsimile) without the prior written permission of Real-Time Innovations, Inc. The software described in this document is furnished solely under and subject to RTI's standard terms and conditions available at <https://www.rti.com/terms> and in accordance with your License Acknowledgement Certificate (LAC) and Maintenance and Support Certificate (MSC), except to the extent otherwise accepted in writing by a corporate officer of RTI.

This is an independent publication and is neither affiliated with, nor authorized, sponsored, or approved by, Microsoft Corporation.

The security features of this product include software developed by the OpenSSL Project for use in the OpenSSL Toolkit (<http://www.openssl.org/>). This product includes cryptographic software written by Eric Young (eay@cryptsoft.com). This product includes software written by Tim Hudson (tjh@cryptsoft.com).

## Notice

Any deprecations or removals noted in this document serve as notice under the Real-Time Innovations, Inc. Maintenance Policy #4220 and/or any other agreements by and between RTI and customer regarding maintenance and support of RTI's software.

*Deprecated* means that the item is still supported in the release, but will be removed in a future release. *Removed* means that the item is discontinued or no longer supported. By specifying that an item is deprecated in a release, RTI hereby provides customer notice that RTI reserves the right after one year from the date of such release and, with or without further notice, to immediately terminate maintenance (including without limitation, providing updates and upgrades) for the item, and no longer support the item, in a future release.

## Technical Support

Real-Time Innovations, Inc.  
232 E. Java Drive, Sunnyvale, CA 94089  
Phone: (408) 990-7444  
Email: [support@rti.com](mailto:support@rti.com)  
Website: <https://support.rti.com/>

# Contents

---

<b>1 Supported Platforms</b> .....	<b>1</b>
<b>2 Compatibility</b> .....	<b>2</b>
<b>3 What's New in 6.1.2</b>	
3.1 Validated Windows Platforms added to Code Generator Dialog's Platform Menu .....	3
3.2 Queuing Service Moved to Labs Tab .....	3
3.3 New Platforms .....	3
3.4 Enhancements for Connex Drive .....	3
3.4.1 Launcher will automatically update to reflect changes from installed RTI Packages .....	3
3.4.2 New configuration options for Launcher Tabs .....	4
<b>4 What's Fixed in 6.1.2</b>	
4.1 Licensed RTI Services Failed to Run from Launcher in LM Version .....	5
4.2 Launcher Crashed when Running Code Generator for Micro or Cert if No Language Selected .....	5
4.3 Dialog for Code Generator for Micro Showed Wrong List of Example Templates for C++ Namespaces .....	5
4.4 Migration Guide in Help Menu Pointed to Invalid URL .....	6
4.5 Possible Crash in Launcher when using Unsupported Image Format .....	6
4.6 Unable to Start Some Tools on Windows Systems in Certain Cases .....	6
4.7 Launcher Crashed when Reopening Code Generator Dialog after Closing It .....	6
<b>5 Previous Releases</b>	
5.1 What's New in 6.1.1 .....	7
5.1.1 Improved Dialogs for Services and Utilities .....	7
5.1.2 Third-Party Software Upgrades .....	8
5.2 What's Fixed in 6.1.1 .....	9
5.2.1 Cursor Continued to Spin after Installing any RTI Package .....	9
5.2.2 Invalid Arguments after Removing Custom Configuration File from a Services Dialog .....	9
5.2.3 Possible Crash in Launcher when Running on macOS Systems .....	9

---

5.2.4	Advanced Options Dialogs Stayed Open after Main Dialog Closed	9
5.2.5	Fields in Advanced Options Dialogs for Services Allowed '-l'	10
5.2.6	Issues in Cloud Discovery Service Dialog	10
5.2.7	Issues in Code Generator Dialog	10
5.2.8	Data Type Convert Dialog Allowed Input and Output Files to have Same Format	10
5.2.9	Data Type Convert Dialog was Missing Advanced Options	11
5.2.10	SQL Server not Removed from Database Integration Service Dialog	11
5.2.11	Validation did not work in Database Integration Service Dialog	11
5.2.12	Launcher Crashed if QoS File in DDS Spy Dialog was Removed	11
5.2.13	Issues in DDS Ping Dialog	12
5.2.14	Issues in DDS Prototyper Dialog	12
5.2.15	Issues in Web Integration Service Dialog	12
5.2.16	Invalid Name for 'What's New' Tab if it was Previously Hidden	13
5.2.17	Running Launcher from Launchpad did not Open Latest Connex DDS Release if Multiple Versions Installed	13
5.2.18	Broken Links Between Micro and Core Documentation after Copying Connex DDS Micro SDK	13
5.2.19	Some Tabs Were Not Visible on macOS	13
5.3	What's New in 6.1.0	14
5.3.1	New Platforms	14
5.3.2	Removed Platforms	14
5.3.3	Improved Database Integration Service dialog	14
5.3.4	Improved Services Dialogs with New Advanced Options	14
5.3.5	Installed Products Table now Shows Version for Each Installed Product	15
5.3.6	Removed -language C++03 and -legacyPlugin Options from Code Generator Dialog	15
5.3.7	New "universal" Option in Code Generator Dialog to Generate Code for All Supported Platforms	15
5.3.8	Code Generator Dialog now includes -useStdString Option	15
5.3.9	New Option in Code Generator Dialog to Generate Code with a Custom Publisher and Subscriber Template	15
5.3.10	Ability to Specify OpenSSL Location when Opening a Terminal	16
5.3.11	Ability to Select which Target Binary to Run	16
5.3.12	New Button for Perfest	16
5.3.13	New Button for Python API	16
5.3.14	New Option in Web Integration Service Dialog to Enable WebSockets	17
5.3.15	Cloud Discovery Service Moved to Services Tab	17
5.4	What's Fixed in 6.1.0	17
5.4.1	User-Defined Button to Open Terminal and Run Executable did not Work Properly	17
5.4.2	OpenSSL Target not Shown in Installed Products	17

---

---

5.4.3 Error when Starting Launcher on Windows systems without Visual C++ Redistributable for Visual Studio 2010 .....	17
5.4.4 Launcher did not Detect that Connex DDS Micro was Installed on Linux and macOS Systems .....	18
5.4.5 Launcher Crashed if rti_version.xml was not Found .....	18
5.4.6 Launcher Propagated Some Environmental Variables on macOS Systems .....	18

## **6 Known Issues**

6.1 Error when Updating GTK2 Libraries on Linux Platforms .....	19
6.2 Command History Window cannot be Resized on Red Hat Enterprise Linux 7.0 Platforms .....	19
6.3 Launcher Fails to Copy License from Network Location into an Administrator Owner Directory .....	19
6.4 GLib Warnings when Opening Dialogs .....	20
6.5 Launcher not Scaled Properly for Intermediate Factors on High-DPI Displays on Windows Platforms .....	20
6.6 Appearance Issues on macOS 10.15 Platforms (Catalina) .....	21

# 1 Supported Platforms

*RTI® Launcher* is supported on the platforms listed in [Table 1.1 Supported Platforms](#). For more information, see the *RTI Connex DDS Core Libraries Platform Notes*.

**Note:** POSIX®-compliant architectures that end with "FACE\_GP" are not supported. Custom target platforms are not supported.

**Table 1.1 Supported Platforms**

Platforms	Description
Linux®	All Linux platforms on Intel x64 CPUs listed in the <i>RTI Connex DDS Core Libraries Release Notes</i> for the same version number.
macOS®	All macOS platforms on Intel x64 CPUs listed in the <i>RTI Connex DDS Core Libraries Release Notes</i> for the same version number.
Windows®	All Windows platforms listed in the <i>RTI Connex DDS Core Libraries Release Notes</i> for the same version number.

## 2 Compatibility

For backward compatibility information between 6.1.2 and previous releases, see the *Migration Guide* on the RTI Community Portal (<https://community.rti.com/documentation>).

*Launcher* has been tested with OpenJDK JDK 11, which is included in the installation package.

To run *Launcher* on a Linux platform: *Launcher* requires at least GTK™ 3 version 3.20.0 and its dependencies.

## 3 What's New in 6.1.2

### 3.1 Validated Windows Platforms added to Code Generator Dialog's Platform Menu

In the Code Generator dialog, the choices in the **Platform** drop-down menu now include validated Windows platforms such as x64Win64VS2019 and x64Win64VS2022.

### 3.2 Queuing Service Moved to Labs Tab

*RTI Queuing Service* is now considered an experimental product. The button to start it has been moved from the Services tab to the Labs tab.

### 3.3 New Platforms

This release adds support for the following platforms:

OS	CPU	RTI Architecture Abbreviation
Ubuntu 22.04	x64	x64Linux4gcc7.3.0
macOS 12	x64	x64Darwin17clang9.0
Windows 11	x64	x64Win64VS2017

### 3.4 Enhancements for Connex Drive

#### 3.4.1 Launcher will automatically update to reflect changes from installed RTI Packages

Previously, if an "RTI Package" (\*.rtipkg) introduced or removed a Button or Tab in Launcher, Launcher needed to be restarted in order to visualize the change. Starting from this release, Launcher will automatically update its content if a change is detected at runtime.



## 3.4.2 New configuration options for Launcher Tabs

The configuration file has been updated to allow you to:

- Specify the position of a Tab in Launcher;
- Specify which Tab is selected by default by Launcher (if the License File has been set);
- Split a tab into two sub-panels.

For more information about these new configurations, see Section 3.1.1 Configuration file of the [RTI Launcher User's Manual](#).

## 4 What's Fixed in 6.1.2

### 4.1 Licensed RTI Services Failed to Run from Launcher in LM Version

Licensed RTI Services, such as *Routing Service*, failed to run from *Launcher* in the License-Managed (LM) version if you skipped copying the license file to a known location. This issue has been resolved.

[RTI Issue ID LAUNCHER-653]

### 4.2 Launcher Crashed when Running Code Generator for Micro or Cert if No Language Selected

When using Launcher's dialogs for **Code Generator for Micro** and **Cert**, *Launcher* may have crashed if you clicked **Run** before selecting a Language from the drop-down menu. This problem has been resolved.

[RTI Issue ID LAUNCHER-649]

### 4.3 Dialog for Code Generator for Micro Showed Wrong List of Example Templates for C++ Namespaces

The dialog for **Code Generator for Micro** has a drop-down list of example templates, which should change based on the selected language. However, when C++ Namespaces was selected, the dialog showed the same example templates as for C++. This problem has been resolved. Now *Launcher* will display the correct example templates, based on the selected language.

[RTI Issue ID LAUNCHER-644]

## 4.4 Migration Guide in Help Menu Pointed to Invalid URL

In release 6.1.1.1, the Migration Guide in *Launcher's* Help menu pointed to an invalid URL. This problem has been resolved.

[RTI Issue ID LAUNCHER-620]

## 4.5 Possible Crash in Launcher when using Unsupported Image Format

*Launcher* may have crashed when using an unsupported image format such as .webp. This issue has been resolved. Now, *Launcher* will report an error when trying to use an image whose format is not one of the following: **.wimp**, **.gif**, **.ico**, **.jpeg**, **.png**, **.tiff**, or **.bmp**.

[RTI Issue ID LAUNCHER-605]

## 4.6 Unable to Start Some Tools on Windows Systems in Certain Cases

On Windows systems, *Admin Console*, *Launcher*, and *Monitor* failed to start when the installation path contained whitespaces and the user did not have admin privileges. This issue has been fixed.

[RTI Issue ID LAUNCHER-602]

## 4.7 Launcher Crashed when Reopening Code Generator Dialog after Closing It

*Launcher* crashed when reopening the Code Generator dialog after closing it. This problem has been resolved.

[RTI Issue ID LAUNCHER-599]

# 5 Previous Releases

## 5.1 What's New in 6.1.1

### 5.1.1 Improved Dialogs for Services and Utilities

The following Advanced Options dialogs have been updated to add several options that were missing:

- *Cloud Discovery Service*
  - Application name (-appName)
  - Log format (-logFormat)
  - Remote Administration Domain ID (-remoteAdministrationDomainID)
  - Remote Monitoring Domain ID (-remoteMonitoringDomainId)
- *Code Generator*
  - Constructor (-constructor)
  - Strict XType specification compliant checks (-strict)
  - Virtual destructor (-virtualDestructor)
- *Persistence Service*
  - Identify execution appending the host name and process ID to the application name (-identifyExecution)
  - Restore its state from the persistence storage (-restore)
  - Disable the service at startup (-noAutoStart)
  - The info directory of the running persistence service (-infoDir)
  - Service thread stack size (-serviceThreadStackSize)

- Enable database locking (-enableDatabaseLocking)
- Refresh database lock period (-databaseLockRefreshPeriod)
- *Queuing Service*
  - The directory for persistence storage (-persistenceStoragePath)
  - The file prefix for persistent storage (-persistenceFilePrefix)
  - Define a user variable (-D)
- *Recording Service*
  - Define a user variable (-D)
- *Record Database Converter*
  - Verbosity (-verbosity)
- *Replay Service*
  - Define a user variable (-D)
  - Enable debug mode (-debugMode)
- *Routing Service*
  - Define a user variable (-D)
  - Identify execution appending the host name and process ID to the application name (-identifyExecution)
  - Redirect logging to a specific file (-logFile)
  - Disable the service at startup (-noAutoEnable)
  - Specify a directory where plugin libraries are located (-pluginSearchPath)
- *Web Integration Service*
  - Verbosity (-verbosity)

## 5.1.2 Third-Party Software Upgrades

The following third-party software used by *Launcher* has been upgraded:

Third-Party Software	Previous Version	Current Version
AdoptOpenJDK®JRE	11.0.7	11.0.13

Third-Party Software	Previous Version	Current Version
Apache® Commons IO™	2.4	2.11

For information on third-party software used by *Connex DDS* products, see the "3rdPartySoftware" documents in your installation: <NDDSHOME>/doc/manuals/connex\_dds\_professional/release\_notes\_3rdparty.

## 5.2 What's Fixed in 6.1.1

### 5.2.1 Cursor Continued to Spin after Installing any RTI Package

The cursor continued to spin after installing any RTI package (**.rtipkg** file). This problem has been resolved, now the cursor stops spinning after installing an RTI package.

[RTI Issue ID LAUNCHER-506]

### 5.2.2 Invalid Arguments after Removing Custom Configuration File from a Services Dialog

In any of the Service dialogs, if you selected a Custom configuration file and later removed it from that text field, this caused *Launcher* to create an invalid argument in the command to start the Service.

*Launcher* didn't update the Configuration drop-down menu when the Custom configuration file was removed. So it was possible to select configurations from the removed Custom configuration file. Then the Service failed because the startup command created by *Launcher* was not correct. For example:

```
-cfgName custom_bridge_domain_0_and_domain_1 -cfgFile "<no custom config file specified>"
```

This problem has been resolved.

[RTI Issue ID LAUNCHER-521]

### 5.2.3 Possible Crash in Launcher when Running on macOS Systems

Due to a missing dependency, *Launcher* may have crashed when running on a macOS system. This issue has been resolved.

[RTI Issue ID LAUNCHER-551]

### 5.2.4 Advanced Options Dialogs Stayed Open after Main Dialog Closed

The Advanced Options dialog remained open after closing the main dialog on Linux and macOS systems. This problem has been resolved.

[RTI Issue ID LAUNCHER-537]

## 5.2.5 Fields in Advanced Options Dialogs for Services Allowed '-1'

Several fields in the Advanced Options dialog for Services mistakenly allowed -1 as a valid value, such as:

- Number of Threads, in Routing Service, Recording Service, and Replay Service
- Keep Alive, in Web Integration Service
- Stop after, in Cloud Discovery Service

This problem has been resolved. The value -1 is no longer allowed in these fields.

[RTI Issue ID LAUNCHER-542]

## 5.2.6 Issues in Cloud Discovery Service Dialog

The following issues have been fixed in the Cloud Discovery Service dialog:

- Typing **<default>** in the Transport field disabled the Run and Check buttons.
- The Allow domain(s) and Deny domain(s) fields in the Advanced Options menu didn't check whether or not the value exceeded the maximum domain ID range.

[RTI Issue ID LAUNCHER-523]

## 5.2.7 Issues in Code Generator Dialog

The following issues have been fixed in the Code Generator dialog's Advanced Options:

- The **Run** and **Check** buttons were disabled if any of the Unbounded size fields were set to an invalid value, even if **Unbounded support** was enabled.
- The **Include directories** field was not checked to make sure the entry was a valid directory.
- Typing **<system default>** in the **Pre-processor executable** field enabled the **Pre-processor options** fields, which should only be enabled when *not* using **<system\_default>**.

[RTI Issue ID LAUNCHER-532]

## 5.2.8 Data Type Convert Dialog Allowed Input and Output Files to have Same Format

The Data Type Convert dialog did not make sure you entered different formats for the input and output files. Converting to the same format is not supported. This problem has been resolved. Now *Launcher* will disable the **Run** and **Check** buttons if the two formats are the same.

[RTI Issue ID LAUNCHER-529]

### 5.2.9 Data Type Convert Dialog was Missing Advanced Options

The Data Type Convert dialog was missing the ability to select Advanced Options. This issue has been resolved. Now you can set the following advanced options:

- Include directories to the list of directories to be searched for header files (-I)
- Define directives (-D)
- Undefine directives (-U)
- Path to the preprocessor (-ppPath)
- Preprocessor options (-ppOption)

[RTI Issue ID LAUNCHER-251]

### 5.2.10 SQL Server not Removed from Database Integration Service Dialog

The SQL Server database should have been removed from the Database Integration Service dialog, since it's no longer supported, starting with release 6.1.0. *Launcher* reported the following warning on Windows systems because SQL Server was still in the Database Integration Service dialog:

```
The XML configuration file 'DatabaseIntegration.xml' has been modified, using the backup
```

This problem has been resolved.

[RTI Issue ID LAUNCHER-533]

### 5.2.11 Validation did not work in Database Integration Service Dialog

Validation didn't work in the Database Integration Service dialog. This problem has been resolved. Now setting an invalid value to any of the fields in the Database Integration Service dialog will disable the **Run** and **Check** buttons.

[RTI Issue ID LAUNCHER-526]

### 5.2.12 Launcher Crashed if QoS File in DDS Spy Dialog was Removed

*Launcher* crashed if the QoS file specified in the DDS Spy dialog was removed. This problem has been resolved.

[RTI Issue ID LAUNCHER-530]



## 5.2.13 Issues in DDS Ping Dialog

The following issues have been fixed in the DDS Ping dialog:

- *Launcher* crashed if the QoS file specified in the DDS Ping dialog was removed.
- The **subscribe** radio button only enabled the subscriber-only fields in the Advanced Options dialog if that dialog was already open.
- If the **Multicast address** field in the Advanced Options dialog was left empty, *Launcher* treated this as an invalid value.
- Setting invalid values for the **Send period** and **Max. samples to send** fields disabled the **Run** and **Check** buttons when the **subscribe** radio button was selected. These two fields should only disable the **Run** and **Check** buttons when the **publish** radio button is selected.
- The **Send period** is passed to the utility when the **subscribe** radio button is selected. It should only be passed when the **publish** radio button is selected.
- In DDS Ping's Advanced Options dialog, the Durability QoS could only be set to the default value (VOLATILE). This problem has been resolved. Now you can configure Durability to be either VOLATILE or TRANSIENT\_LOCAL.

[RTI Issue IDs LAUNCHER-531, LAUNCHER-511]

## 5.2.14 Issues in DDS Prototyper Dialog

The following issues have been fixed in the DDS Prototyper dialog:

- In the Advanced Options, the **Data Fill** check box should be labeled Disable and be unchecked. That is, the default is that Data Fill is enabled. Check the box to disable it.
- The **Lua Script** field did not make sure the selected file was a **.lua** script.

[RTI Issue ID LAUNCHER-522]

## 5.2.15 Issues in Web Integration Service Dialog

The following issues have been fixed in the Web Integration Service Advanced Options dialog:

- The **Keep Alive** field allowed negative numbers other than -1.
- Typing in the **Access Control List** field did not enable the API Keys table.

[RTI Issue ID LAUNCHER-524]

## 5.2.16 Invalid Name for 'What's New' Tab if it was Previously Hidden

On a macOS system, if the **What's New** tab was hidden and then unhidden, the tab showed an invalid name. This problem has been resolved.

[RTI Issue ID LAUNCHER-504]

## 5.2.17 Running Launcher from Launchpad did not Open Latest Connex DDS Release if Multiple Versions Installed

Running *Launcher* from Apple® Launchpad® didn't open the latest release if multiple versions of *Connex DDS* were installed, instead it opened the oldest version. This problem has been resolved. Now running *Launcher* from Launchpad will open the latest release.

[RTI Issue ID LAUNCHER-528]

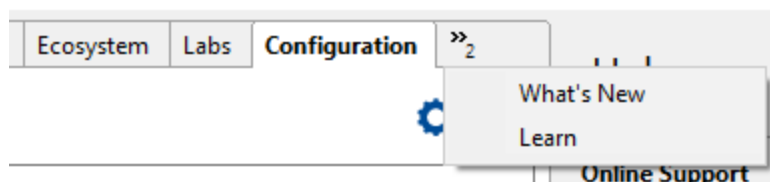
## 5.2.18 Broken Links Between Micro and Core Documentation after Copying Connex DDS Micro SDK

The **Copy Connex DDS Micro SDK** button copied the entire *Connex DDS Micro* installation directory. This could result in broken links between *Connex DDS Micro* and *Connex DDS* documentation. This issue has been resolved; the **Copy Connex DDS Micro SDK** button will now only copy the *Connex DDS Micro* source code and the examples, excluding the documentation, *Code Generator*, and *Micro Application Generator*. Documentation must be accessed via the *RTI Launcher* or from the *Connex DDS Micro* installation directory.

[RTI Issue ID LAUNCHER-410]

## 5.2.19 Some Tabs Were Not Visible on macOS

In previous releases, some tabs might not have been visible on macOS if there was not enough space in the *Launcher* window. This issue has been resolved. Now, if there are more tabs than space in *Launcher*, a dropdown menu will appear to allow you to navigate to the hidden tabs, as shown in the figure below.



[RTI Issue ID LAUNCHER-623]

## 5.3 What's New in 6.1.0

### 5.3.1 New Platforms

This release adds support for these platforms:

- macOS 10.15
- Red Hat Enterprise Linux 7.6
- Ubuntu 20.04 LTS (x64)

### 5.3.2 Removed Platforms

These platforms are no longer supported:

- 32-bit (x86) Linux and Windows platforms
- CentOS 6.x
- macOS 10.12
- Red Hat Enterprise Linux 6.x
- RedHawk™ Linux 6.5 (x86) (custom-supported target platform)
- SUSE Linux Enterprise Server 11
- Ubuntu 12.04 LTS

### 5.3.3 Improved Database Integration Service dialog

The Database Integration Service dialog has been updated to add several missing options. It has a new Advanced Options dialog, where you can set options specific to the selected Database Type, such as:

- where to store the log
- verbosity
- support for heap monitoring
- domain ID
- transport used by the data base (UDPv4 or shared memory)

### 5.3.4 Improved Services Dialogs with New Advanced Options

Routing Service and Persistence Service now have an Advanced Options dialog. In addition, the Advanced Options dialog for other Services has been improved by adding several more options, such as:

- Heap Snapshot
- Domain ID
- Remote Administration Domain ID
- Verbosity

### 5.3.5 Installed Products Table now Shows Version for Each Installed Product

The Installed Products table in the Configuration tab has been updated to show version information for each installed product. If more than one version of a product is installed, the table will show each version, separated by a comma, e.g., "6.1.0, 6.1.1".

### 5.3.6 Removed `-language C++03` and `-legacyPlugin` Options from Code Generator Dialog

The "Modern C++ (C++03)" language option has been removed from the Code Generator dialog. The "Use legacy C++03/11 plugin" check box, in the advanced options of the Code Generator dialog, has also been removed.

These changes been made because the `-language C++03` option has been deprecated and the `-legacyPlugin` option has been removed from *Code Generator*. See *What's New*, in the [RTI Code Generator Release Notes](#) for more information.

### 5.3.7 New "universal" Option in Code Generator Dialog to Generate Code for All Supported Platforms

This release adds a "universal" option to the drop-down list of platforms in the Code Generator dialog. This option will generate compatible publisher/subscriber code for all supported platforms.

### 5.3.8 Code Generator Dialog now includes `-useStdString` Option

The Code Generator dialog has a new advanced option, `-useStdString`, which will use 'std::string' instead of 'char \*' when generating code for IDL strings when the language option is C++.

### 5.3.9 New Option in Code Generator Dialog to Generate Code with a Custom Publisher and Subscriber Template

A new drop-down list in the Code Generator dialog lists the available example templates in the *Connex DDS* installation. Selecting one of the example templates will add the `-exampleTemplate` option when running Code Generator. This option generates code using a custom publisher and subscriber template saved under `NDDSHOME/resource/app/app_support/rtiddsgen/templates/example/<language>/<templateName>/.`

## 5.3.10 Ability to Specify OpenSSL Location when Opening a Terminal

When you use the button that opens a new terminal for *Connex DDS Professional* or *Connex DDS Micro*, now you can specify where OpenSSL is located on your system.

## 5.3.11 Ability to Select which Target Binary to Run

There is a new drop-down field that is used to select which target binary should be run. This new field has been added to the dialogs for:

- *RTI Routing Service*
- *RTI Recording Service*
- *RTI Persistence Service*
- *RTI DDS Ping*
- *RTI DDS Spy*

If no targets have been installed, the default is:

- x64Linux2.6gcc4.4.5 for Linux systems
- x64Darwin17clang9.0 for macOS systems
- x64Win64VS2012 for Windows systems

To change the default target, either:

- Edit the file `$NDDSHOME/resource/scripts/rticommon_config` to add your selected platform to `connexdds_architecture` (on Linux and macOS systems) or `connexddsArchitecture` (on Windows systems).
- Or set the `CONNEXTDDS_ARCH` environmental variable to your selected target architecture.

## 5.3.12 New Button for Perfest

The Utilities tab has a new button for Perfest. This button redirects to the RTI github repository for Perfest.

## 5.3.13 New Button for Python API

The Labs tab has a new button for the Python® API. This button redirects to the RTI github repository, where you can find more information about this experimental API.

## 5.3.14 New Option in Web Integration Service Dialog to Enable WebSockets

There is a new option in the Advanced Options dialog for Web Integration Service to enable WebSockets.

## 5.3.15 Cloud Discovery Service Moved to Services Tab

Cloud Discovery Service has been moved to the Services Tab and new options have been added to its dialog.

## 5.4 What's Fixed in 6.1.0

### 5.4.1 User-Defined Button to Open Terminal and Run Executable did not Work Properly

*Launcher* allows you to configure a button that will open a terminal and run an executable from that terminal. For example:

```
<toolexec terminal="true">/path/to/your/executable</toolexec>
```

In the previous release, the button opened the terminal, but it failed to run the executable. This problem has been resolved. Now the button works as expected.

[RTI Issue ID LAUNCHER-432]

### 5.4.2 OpenSSL Target not Shown in Installed Products

The OpenSSL target wasn't shown as one of the Installed Products in the Installation tab. The following error was displayed in the log:

```
Product(s) not found for XML tag: openssl_target.
```

This problem has been resolved.

[RTI Issue ID LAUNCHER-440]

### 5.4.3 Error when Starting Launcher on Windows systems without Visual C++ Redistributable for Visual Studio 2010

Trying to run *Launcher* on a Windows system without Visual C++ Redistributable for Visual Studio 2010 caused the following error:

```
The code execution cannot proceed because MSVCR100.dll was not found. Reinstalling the program may fix this problem.
```

This problem has been resolved. The dependency on Visual C++ Redistributable for Visual Studio 2010 has been removed.

[RTI Issue ID LAUNCHER-460]

#### 5.4.4 Launcher did not Detect that Connex DDS Micro was Installed on Linux and macOS Systems

On Linux and macOS systems, *Launcher* failed to detect that *Connex DDS Micro* was installed. This caused *Launcher* to disable the button for “Copy Connex DDS Micro SDK” in the Utilities tab, and the Code Generator dialog did not show *Connex DDS Micro* in the SDK choices. This problem has been resolved.

[RTI Issue ID LAUNCHER-462]

#### 5.4.5 Launcher Crashed if rti\_version.xml was not Found

*Launcher* crashed if the **rti\_version.xml** file was not found during startup. This problem has been resolved. Now *Launcher* will start even if **rti\_version.xml** is not found.

[RTI Issue ID LAUNCHER-466]

#### 5.4.6 Launcher Propagated Some Environmental Variables on macOS Systems

*Launcher* propagated some environmental variables, e.g. JREHOME, NDDSHOME, etc, to newly created Terminals window on macOS systems. This problem has been resolved. Now no variables should be leaked by *Launcher*.

[RTI Issue ID LAUNCHER-512]

## 6 Known Issues

### 6.1 Error when Updating GTK2 Libraries on Linux Platforms

If you update the GTK2 libraries on a Linux system and click on the textbox, *Launcher* will crash and show this error:

```
java: cairo-misc.c:380: _cairo_operator_bounded_by_source: Assertion `NOT_REACHED' failed.
./rti_connex_dds-5.2.0/bin/rtilauncher: line 48: 17317 Aborted (core dumped)
"$JREHOME/bin/java" -jar "$rti_launcher.jar"
```

To resolve this problem, modify the *Launcher* script (<NDDSHOME>/bin/rtilauncher). Add the following to the java call in the **rtilauncher** script:

```
-Dorg.eclipse.swt.internal.gtk.cairoGraphics=false
```

When you are done, it should look like this:

```
"$JREHOME/bin/java" -Dorg.eclipse.swt.internal.gtk.cairoGraphics=false -jar "$rti_launcher.jar"
```

[RTI Issue ID LAUNCHER-151]

### 6.2 Command History Window cannot be Resized on Red Hat Enterprise Linux 7.0 Platforms

The command history window cannot be resized on Red Hat Enterprise Linux 7.0 platforms.

[RTI Issue ID LAUNCHER-162]

### 6.3 Launcher Fails to Copy License from Network Location into an Administrator Owner Directory

*Launcher* fails to copy the license from a network location into an administrator owner directory. This is because *Launcher* tries to copy the license using a command prompt with administration privileges, which cannot access the shared folder because it is running in a different user context.



[RTI Issue ID LAUNCHER-181]

## 6.4 GLib Warnings when Opening Dialogs

On certain Linux platforms, you may see the following warning when opening a dialog:

```
(RTI Launcher:2680): GLib-CRITICAL **: .... Source ID 1968 was not found when attempting to  
remove it
```

This warning is harmless. It happens because `g_source_remove()` is called to disconnect a source that was already disconnected. (*Launcher* doesn't call that function, but does call some of its dependent libraries.)

[RTI Issue ID LAUNCHER-382]

## 6.5 Launcher not Scaled Properly for Intermediate Factors on High-DPI Displays on Windows Platforms

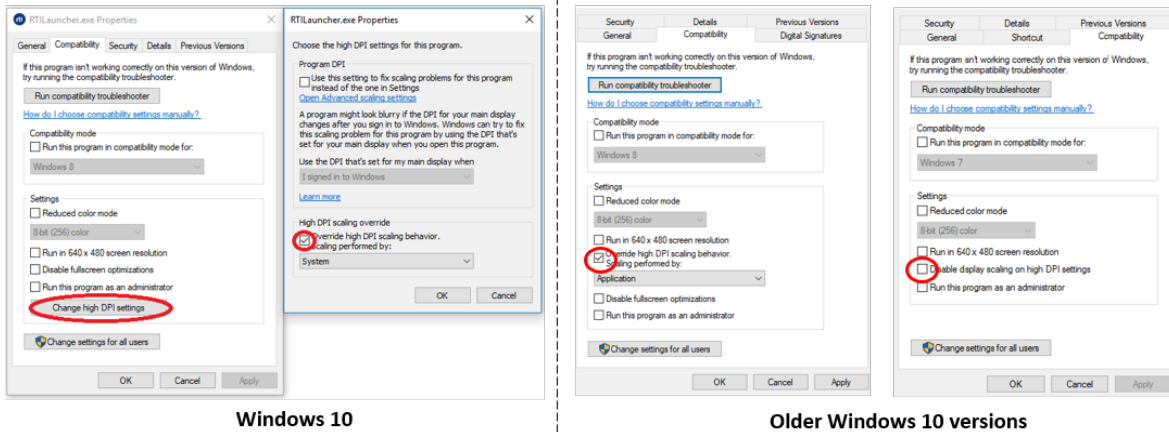
SWT (the library used to build *Launcher*) automatically scales images on high-DPI monitors based on the resolution of the monitor; however, this scaling works only with integer scaling factors (100%, 200%, etc.) by default. Therefore, *Launcher* is not scaled properly when using intermediate scaling factors (125%, 150%, etc.) on high-DPI displays on Windows platforms.

The workaround is to change the scaling behavior from **Application** to **System**. For example, on Windows 10 platforms:

1. Right click the **RTILauncher.exe** executable and select Properties.
2. Navigate to the Compatibility tab and choose the "Change high DPI settings" button.
3. Select the "Override high DPI scaling behavior" check box and change **Application** to **System** in the drop-down menu.

**Note:** The "Override high DPI scaling behavior" is located in different places on older Windows 10 versions:

- The "Override high DPI scaling behavior" check box may be located in the Compatibility tab.
- The check box may be called "Disable display scaling on high DPI settings" located in the Compatibility tab.

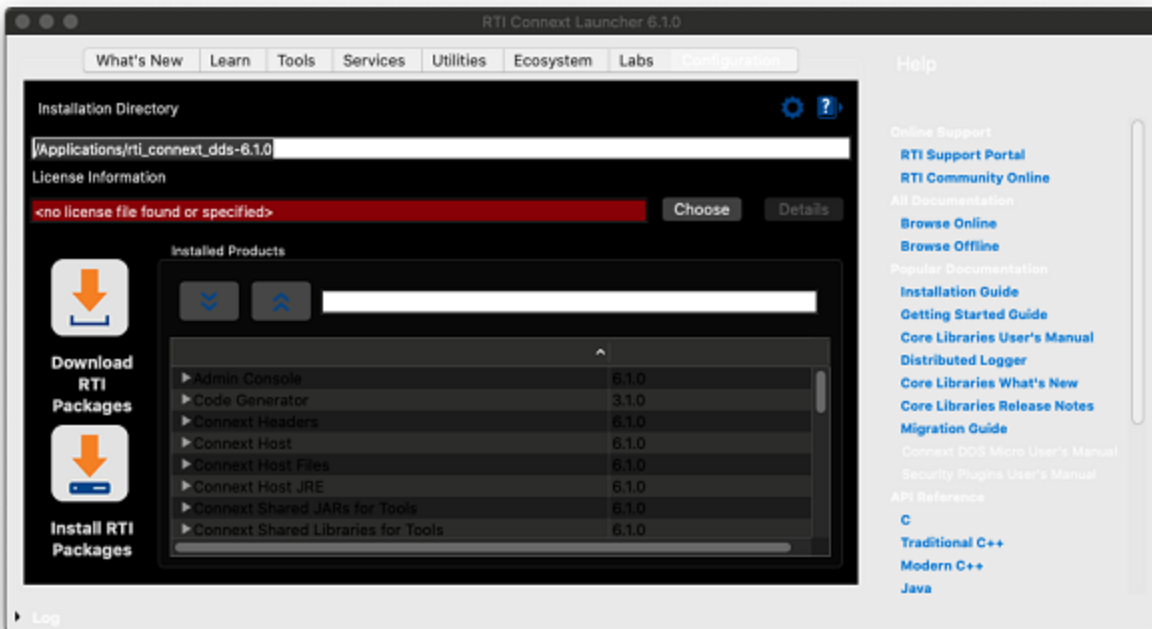


[RTI Issue ID LAUNCHER-387]

## 6.6 Appearance Issues on macOS 10.15 Platforms (Catalina)

*Launcher* shows some appearance issues on macOS 10.15 platforms (Catalina):

- If the appearance mode is set to *Auto*, *Launcher* will mix the Light and Dark appearances.
- Changing the appearance mode from Light to Dark, or vice versa, will also mix the Light and Dark appearances of *Launcher*.



In both cases, changing the appearance mode to Light or Dark and reopening *Launcher* will fix the appearance issue.

[RTI Issue ID LAUNCHER-510]