

RTI Launcher

Release Notes

Version 7.1.0



Trademarks

RTI, Real-Time Innovations, Connex, NDDS, the RTI logo, IRTI and the phrase, “Your Systems. Working as one.” are registered trademarks, trademarks or service marks of Real-Time Innovations, Inc. All other trademarks belong to their respective owners.

Copy and Use Restrictions

No part of this publication may be reproduced, stored in a retrieval system, or transmitted in any form (including electronic, mechanical, photocopy, and facsimile) without the prior written permission of Real-Time Innovations, Inc. The software described in this document is furnished solely under and subject to RTI's standard terms and conditions available at <https://www.rti.com/terms> and in accordance with your License Acknowledgement Certificate (LAC) and Maintenance and Support Certificate (MSC), except to the extent otherwise accepted in writing by a corporate officer of RTI.

This is an independent publication and is neither affiliated with, nor authorized, sponsored, or approved by, Microsoft Corporation.

The security features of this product include software developed by the OpenSSL Project for use in the OpenSSL Toolkit (<http://www.openssl.org/>). This product includes cryptographic software written by Eric Young (eay@cryptsoft.com). This product includes software written by Tim Hudson (tjh@cryptsoft.com).

Notices

Early Access Software

“Real-Time Innovations, Inc. (“RTI”) licenses this Early Access release software (“Software”) to you subject to your agreement to all of the following conditions:

- (1) you may reproduce and execute the Software only for your internal business purposes, solely with other RTI software licensed to you by RTI under applicable agreements by and between you and RTI, and solely in a non-production environment;
- (2) you acknowledge that the Software has not gone through all of RTI’s standard commercial testing, and is not maintained by RTI’s support team;
- (3) the Software is provided to you on an “AS IS” basis, and RTI disclaims, to the maximum extent permitted by applicable law, all express and implied representations, warranties and guarantees, including without limitation, the implied warranties of merchantability, fitness for a particular purpose, satisfactory quality, and non-infringement of third party rights;

(4) any such suggestions or ideas you provide regarding the Software (collectively , “Feedback”), may be used and exploited in any and every way by RTI (including without limitation, by granting sub-licenses), on a non-exclusive, perpetual, irrevocable, transferable, and worldwide basis, without any compensation, without any obligation to report on such use, and without any other restriction or obligation to you; and

(5) TO THE MAXIMUM EXTENT PERMITTED BY APPLICABLE LAW, IN NO EVENT WILL RTI BE LIABLE TO YOU FOR ANY DIRECT, INDIRECT, SPECIAL, INCIDENTAL, EXEMPLARY OR PUNITIVE OR CONSEQUENTIAL DAMAGES OF ANY KIND, OR FOR LOST PROFITS, LOST DATA, LOST REPUTATION, OR COST OF COVER, REGARDLESS OF THE FORM OF ACTION WHETHER IN CONTRACT, TORT (INCLUDING WITHOUT LIMITATION, NEGLIGENCE), STRICT PRODUCT LIABILITY OR OTHERWISE, WHETHER ARISING OUT OF OR RELATING TO THE USE OR INABILITY TO USE THE SOFTWARE, EVEN IF RTI HAS BEEN ADVISED OF THE POSSIBILITY OF SUCH DAMAGES.”

Deprecations and Removals

Any deprecations or removals noted in this document serve as notice under the Real-Time Innovations, Inc. Maintenance Policy #4220 and/or any other agreements by and between RTI and customer regarding maintenance and support of RTI’s software.

Deprecated means that the item is still supported in the release, but will be removed in a future release. *Removed* means that the item is discontinued or no longer supported. By specifying that an item is deprecated in a release, RTI hereby provides customer notice that RTI reserves the right after one year from the date of such release and, with or without further notice, to immediately terminate maintenance (including without limitation, providing updates and upgrades) for the item, and no longer support the item, in a future release.

Technical Support

Real-Time Innovations, Inc.

232 E. Java Drive

Sunnyvale, CA 94089

Phone: (408) 990-7444

Email: support@rti.com

Website: <https://support.rti.com/>

Contents

1 Supported Platforms	1
2 Compatibility	2
3 What's New in 7.1.0	
3.1 Option in Web Integration Service dialog to enable builtin topics	3
3.2 Launcher displays correct mode (Drive or Professional) when both products are installed	3
3.3 Code Generator dialog now accepts directories as input and to search for files recursively	3
4 What's Fixed in 7.1.0	
4.1 Local link to Ping documentation pointed to Spy documentation	4
5 Previous Release	
5.1 What's New in 7.0.0	5
5.1.1 'Copy Connex Micro SDK' Button no longer Copies Connex Micro Documentation	5
5.1.2 User Entry of OpenSSL Path no longer Required	5
5.1.3 C++/CLI and Legacy .NET Options Removed from Code Generator Dialog	5
5.1.4 Code Generator Dialog's Language Choices now Include Python	6
5.1.5 Persistence Service Advanced Options Dialog now Allows Setting the Restore State to Persistent Storage	6
5.1.6 Launcher Automatically Updates to Reflect Changes from Installed RTI Packages	6
5.1.7 New Location for Configuration Files for Labs Panel	6
5.1.8 Validated Windows Platforms added to Code Generator Dialog's Platforms Menu	6
5.1.9 New Configuration Options for Launcher Tabs	6
5.1.10 Updates to DDS Spy Dialog	6
5.2 What's Fixed in 7.0.0	7
5.2.1 Launcher Crashed when Reopening Code Generator Dialog after Closing it	7
5.2.2 Unable to Start Some Tools on Windows Systems in Certain Cases	7
5.2.3 Possible Crash when Using Unsupported Image Format	7
5.2.4 Migration Guide in Help Menu Pointed to an Invalid URL	7

5.2.5 Licensed RTI Services Failed to Run from Launcher in LM Version	8
6 Known Issues	
6.1 Error when Updating GTK2 Libraries on Linux Platforms	9
6.2 Command History Window cannot be Resized on Red Hat Enterprise Linux 7.0 Platforms	9
6.3 Launcher Fails to Copy License from Network Location into an Administrator Owner Directory	10
6.4 GLib Warnings when Opening Dialogs	10
6.5 Launcher not Scaled Properly for Intermediate Factors on High-DPI Displays on Windows Platforms	10
6.6 Appearance Issues on macOS 10.15 Platforms (Catalina)	11
6.7 Drag-and-drop does not work when running Launcher as Administrator on Windows systems	12
6.8 Connex DDS Professional Terminal does not configure OpenSSL in PATH	12

1 Supported Platforms

See the column for *Launcher* in the table of [Supported Platforms for Connex Applications, in the RTI Connex Core Libraries Release Notes](#).

2 Compatibility

For backward-compatibility information between this and previous releases, see the *Migration Guide* on the RTI Community Portal (<https://community.rti.com/documentation>).

Launcher has been tested with OpenJDK JDK 11, which is included in the installation package.

To run *Launcher* on a Linux platform: *Launcher* requires at least GTK™ 3 version 3.20.0 and its dependencies.

3 What's New in 7.1.0

3.1 Option in Web Integration Service dialog to enable builtin topics

There is a new option in the Advanced Options dialog for Web Integration Service to enable support for builtin topics.

3.2 Launcher displays correct mode (Drive or Professional) when both products are installed

Previously, if both *Connex Drive* and *Connex Professional* were installed on the same machine, you had to remove the workspace each time you wanted to run the second installation because the workspace was shared between the two products. This has been changed so now *Launcher* will detect the mode at startup.

3.3 Code Generator dialog now accepts directories as input and to search for files recursively

The Code Generator dialog now accepts directories as input. When using a directory as an input, *Launcher* will automatically add the **-inputIDL** or **-inputXML** option. There is also a new checkbox to search for files recursively.

4 What's Fixed in 7.1.0

4.1 Local link to Ping documentation pointed to Spy documentation

The local link to the Ping documentation pointed to the Spy documentation. This issue has been resolved.

[RTI Issue ID LAUNCHER-668]

5 Previous Release

5.1 What's New in 7.0.0

5.1.1 'Copy Connex Micro SDK' Button no longer Copies Connex Micro Documentation

In previous releases, the **Copy Connex Micro SDK** button copied the entire *Connex Micro* installation directory. This caused broken links between *Connex Micro* and *Connex Core Libraries* documentation. This issue has been resolved; the **Copy Connex Micro SDK** button will now only copy the *Connex Micro* source code and the examples; it will not copy the *Connex Micro* documentation, *Code Generator*, or *Micro Application Generator*. Documentation must be accessed via *Launcher* or the *Connex Micro* installation directory.

5.1.2 User Entry of OpenSSL Path no longer Required

You no longer need to specify the path to OpenSSL, because OpenSSL is always installed under `$NDDSHOME/third_party/openssl-<version>`.

The OpenSSL fields have been removed from the dialogs for opening *Connex Professional* and *Connex Micro* terminals.

5.1.3 C++/CLI and Legacy .NET Options Removed from Code Generator Dialog

The C# (Legacy) and C++/CLI (Legacy .NET only) language options have been removed from the *Code Generator* dialog.

These changes have been made because the **-language C++/CLI** and **-dotnet legacy** options have been removed from *Code Generator*. See "What's New in 4.0.0" in the *RTI Code Generator Release Notes* for more information.

5.1.4 Code Generator Dialog's Language Choices now Include Python

The language drop-down list in the Code Generator dialog has been updated to include Python.

5.1.5 Persistence Service Advanced Options Dialog now Allows Setting the Restore State to Persistent Storage

The Persistence Service Advanced Options dialog has been updated to allow you to set the Restore state to any of its supported values. Now you can use `-restore 1`, `-restore 0`, or omit the `-restore` option. Previously `-restore 1` was not supported.

5.1.6 Launcher Automatically Updates to Reflect Changes from Installed RTI Packages

Previously, if the installation or removal of an RTI Package (`*.rtipkg`) caused a button or tab to be added or removed in *Launcher*, you had to restart *Launcher* to see the change. *Launcher* has been updated to automatically update its content if a change is detected while *Launcher* is running.

5.1.7 New Location for Configuration Files for Labs Panel

The configuration files for the Labs panel are now in the *Connex* installation directory, instead of `rti_workspace`. You will find these files in `NDDSHOME>/resource/app/app_support/launcher/panels`.

5.1.8 Validated Windows Platforms added to Code Generator Dialog's Platforms Menu

In the Code Generator dialog, the choices in the Platforms drop-down menu now include validated Windows platforms such as `x64Win64VS2019` and `x64Win64VS2022`.

5.1.9 New Configuration Options for Launcher Tabs

The configuration file has been updated to allow you to:

- Specify the position of a tab in *Launcher*.
- Specify which tab is selected by default (if the License File has been set).
- Split a tab into two sub-panels.

For more information about these new configurations, see Section 3.1.1, Configuration File, in the *Launcher User's Manual*.

5.1.10 Updates to DDS Spy Dialog

The DDS Spy dialog has been updated with new options to:

- Configure what type of data (discovery data, user data) will be displayed (**-mode** <USER|DISC>). If **-mode** is omitted, both types are displayed.
- Display the entity name (**-showEntityName**)
- Display the partition (**-showPartition**) to which an entity belongs

The **Print Sample** option has been updated so you can configure which type of sample information DDS Spy will display (plain or compact). The default is plain.

The **Truncate** option has been removed, since DDS Spy no longer supports it.

5.2 What's Fixed in 7.0.0

5.2.1 Launcher Crashed when Reopening Code Generator Dialog after Closing it

Launcher crashed when reopening the *Code Generator* dialog after closing it. This problem has been resolved.

[RTI Issue ID LAUNCHER-599]

5.2.2 Unable to Start Some Tools on Windows Systems in Certain Cases

On Windows systems, *Launcher* (as well as *Admin Console* and *Monitor*) failed to start when the installation path contained white spaces and the user did not have admin privileges. This problem has been resolved.

[RTI Issue ID LAUNCHER-602]

5.2.3 Possible Crash when Using Unsupported Image Format

Launcher may have crashed when using an unsupported image format such as **.webp**. This problem has been resolved. Now, *Launcher* will report an error when trying to use an image whose format is not one of the following: **wimp, .gif, .ico, .jpeg, .png, .tiff, .bmp**.

[RTI Issue ID LAUNCHER-605]

5.2.4 Migration Guide in Help Menu Pointed to an Invalid URL

The *Migration Guide* in the Help menu pointed to an invalid URL. This problem has been resolved.

[RTI Issue ID LAUNCHER-620]

5.2.5 Licensed RTI Services Failed to Run from Launcher in LM Version

Licensed RTI Services, such as *RTI Routing Service*, failed to run from *Launcher* in the License-Managed (LM) version if you skipped copying the license file to a known location. This issue has been resolved.

[RTI Issue ID LAUNCHER-653]

6 Known Issues

Note: For an updated list of critical known issues, see the Critical Issues List on the RTI Customer Portal at <https://support.rti.com>.

6.1 Error when Updating GTK2 Libraries on Linux Platforms

If you update the GTK2 libraries on a Linux system and click on the textbox, *Launcher* will crash and show this error:

```
java: cairo-misc.c:380: _cairo_operator_bounded_by_source: Assertion `NOT_REACHED' failed.
./rti_connexxt_dds-5.2.0/bin/rtilauncher: line 48: 17317 Aborted (core dumped)
"$JREHOME/bin/java" -jar "$rti_launcher.jar"
```

To resolve this problem, modify the *Launcher* script (<NDDSHOME>/bin/rtilauncher). Add the following to the java call in the **rtilauncher** script:

```
-Dorg.eclipse.swt.internal.gtk.cairoGraphics=false
```

When you are done, it should look like this:

```
"$JREHOME/bin/java" -Dorg.eclipse.swt.internal.gtk.cairoGraphics=false -jar "$rti_launcher.jar"
```

[RTI Issue ID LAUNCHER-151]

6.2 Command History Window cannot be Resized on Red Hat Enterprise Linux 7.0 Platforms

The command history window cannot be resized on Red Hat Enterprise Linux 7.0 platforms.

[RTI Issue ID LAUNCHER-162]

6.3 Launcher Fails to Copy License from Network Location into an Administrator Owner Directory

Launcher fails to copy the license from a network location into an administrator owner directory. This is because *Launcher* tries to copy the license using a command prompt with administration privileges, which cannot access the shared folder because it is running in a different user context.

[RTI Issue ID LAUNCHER-181]

6.4 GLib Warnings when Opening Dialogs

On certain Linux platforms, you may see the following warning when opening a dialog:

```
(RTI Launcher:2680): GLib-CRITICAL **: .... Source ID 1968 was not found when attempting to remove it
```

This warning is harmless. It happens because `g_source_remove()` is called to disconnect a source that was already disconnected. (*Launcher* doesn't call that function, but does call some of its dependent libraries.)

[RTI Issue ID LAUNCHER-382]

6.5 Launcher not Scaled Properly for Intermediate Factors on High-DPI Displays on Windows Platforms

SWT (the library used to build *Launcher*) automatically scales images on high-DPI monitors based on the resolution of the monitor; however, this scaling works only with integer scaling factors (100%, 200%, etc.) by default. Therefore, *Launcher* is not scaled properly when using intermediate scaling factors (125%, 150%, etc.) on high-DPI displays on Windows platforms.

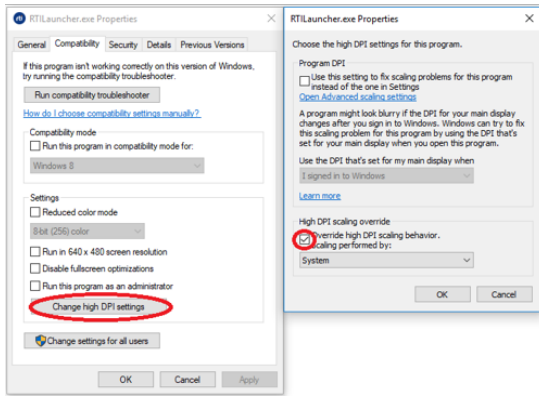
The workaround is to change the scaling behavior from **Application** to **System**. For example, on Windows 10 platforms:

1. Right click the **RTILauncher.exe** executable and select Properties.
2. Navigate to the Compatibility tab and choose the "Change high DPI settings" button.
3. Select the "Override high DPI scaling behavior" check box and change **Application** to **System** in the drop-down menu.

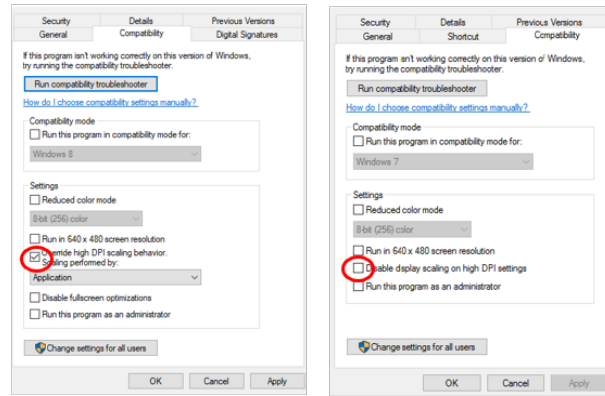
Note: The "Override high DPI scaling behavior" is located in different places on older Windows 10 versions:

- The "Override high DPI scaling behavior" check box may be located in the Compatibility tab.

- The check box may be called "Disable display scaling on high DPI settings" located in the Compatibility tab.



Windows 10



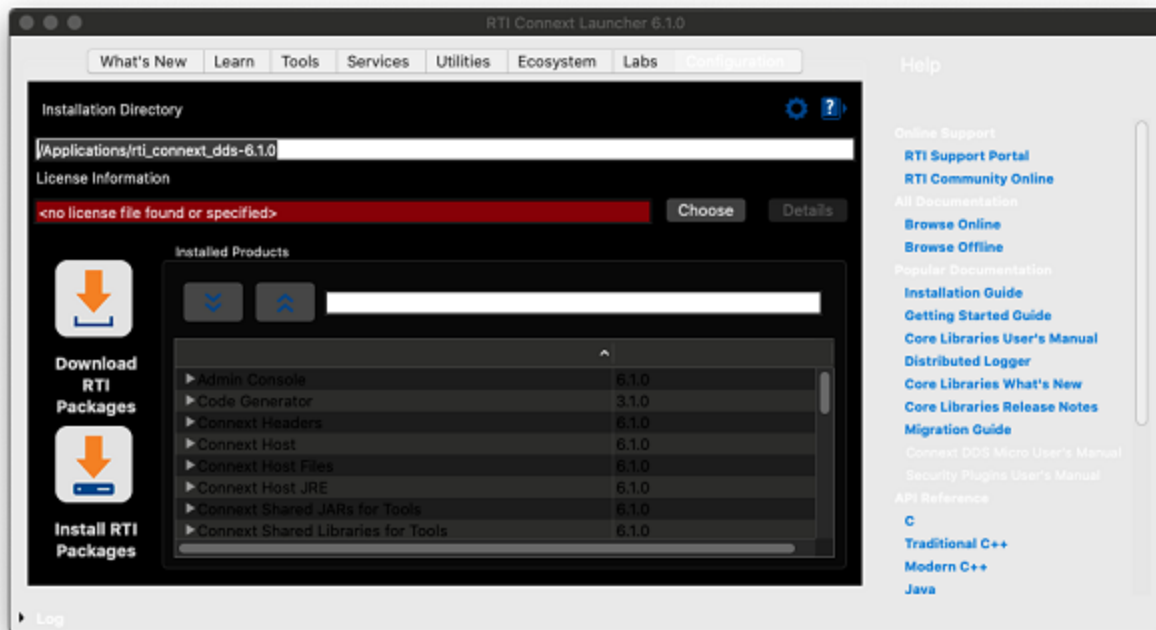
Older Windows 10 versions

[RTI Issue ID LAUNCHER-387]

6.6 Appearance Issues on macOS 10.15 Platforms (Catalina)

Launcher shows some appearance issues on macOS 10.15 platforms (Catalina):

- If the appearance mode is set to *Auto*, *Launcher* will mix the Light and Dark appearances.
- Changing the appearance mode from Light to Dark, or vice versa, will also mix the Light and Dark appearances of *Launcher*.



In both cases, changing the appearance mode to Light or Dark and reopening *Launcher* will fix the appearance issue.

[RTI Issue ID LAUNCHER-510]

6.7 Drag-and-drop does not work when running Launcher as Administrator on Windows systems

The drag-and-drop feature doesn't work when running *Launcher* as an Administrator on a Windows system.

[RTI Issue ID LAUNCHER-607]

6.8 Connexx DDS Professional Terminal does not configure OpenSSL in PATH

The terminal that is launched by pressing the button for *Connexx DDS Professional* doesn't configure OpenSSL in the PATH.

[RTI Issue ID LAUNCHER-694]