

RTI Launcher Release Notes

Version 7.3.0



Contents

1	Copyrights and Notices	1
2	Supported Platforms	3
3	Compatibility	4
4	What's New in 7.3.0 LTS	5
4.1	New button in Tools panel runs PlotJuggler RTI Edition	5
4.2	New API panel contains direct links to API documentation	5
4.3	Removed Labs panel	5
4.4	New option in DDS Ping and DDS Spy configures Builtin Discovery Plugins	7
4.5	DDS Ping and DDS Spy support configuring participant partitions	8
4.6	Third-Party software changes	10
5	Previous Releases	11
5.1	What's New in 7.2.0	11
5.1.1	Updated Ecosystem panel	11
5.1.2	Updated What's New panel	11
5.1.3	Updated Utilities panel	11
5.1.4	Third-party software changes	12
5.2	What's Fixed in 7.2.0	12
5.2.1	[Critical] Launcher crashed when a dialog contained an invalid value	12
5.2.2	[Trivial] Connex Professional Terminal did not configure OpenSSL in PATH *	12
5.3	What's New in 7.1.0	12
5.3.1	Option in Web Integration Service dialog to enable builtin topics	12
5.3.2	Launcher displays correct mode (Drive or Professional) when both products are installed	13
5.3.3	Code Generator dialog now accepts directories as input and to search for files recursively	13
5.4	What's Fixed in 7.1.0	13
5.4.1	[Minor] Local link to Ping documentation pointed to Spy documentation *	13
5.5	What's New in 7.0.0	13
5.5.1	'Copy Connex Micro SDK' Button no longer Copies Connex Micro Documentation	13
5.5.2	User Entry of OpenSSL Path no longer Required	14
5.5.3	C++/CLI and Legacy .NET Options Removed from Code Generator Dialog	14
5.5.4	Code Generator Dialog's Language Choices now Include Python	14
5.5.5	Persistence Service Advanced Options Dialog now Allows Setting the Restore State to Persistent Storage	14
5.5.6	Launcher Automatically Updates to Reflect Changes from Installed RTI Packages . .	14

5.5.7	New Location for Configuration Files for Labs Panel	14
5.5.8	Validated Windows Platforms added to Code Generator Dialog's Platforms Menu . .	15
5.5.9	New Configuration Options for Launcher Tabs	15
5.5.10	Updates to DDS Spy Dialog	15
5.6	What's Fixed in 7.0.0	15
5.6.1	[Major] Launcher crashed when reopening Code Generator dialog after closing it . .	16
5.6.2	[Major] Unable to start some tools on Windows systems in certain cases	16
5.6.3	[Major] Possible crash when using unsupported image format	16
5.6.4	[Minor] Migration Guide in Help menu pointed to invalid URL	16
5.6.5	[Minor] Licensed RTI Services failed to run from Launcher in LM version	16
6	Known Issues	17
6.1	Error when Updating GTK2 Libraries on Linux Platforms	17
6.2	Launcher Fails to Copy License from Network Location into an Administrator Owner Directory	17
6.3	GLib Warnings when Opening Dialogs	18
6.4	Launcher not Scaled Properly for Intermediate Factors on High-DPI Displays on Windows Platforms	18
6.5	Appearance Issues on macOS 10.15 Platforms (Catalina)	19
6.6	Drag-and-drop does not Work when Running Launcher as Administrator on Windows Systems	19
6.7	Launcher Fails to Start Terminal Applications in macOS Ventura	20

Chapter 1 Copyrights and Notices

© 2017-2024 Real-Time Innovations, Inc. All rights reserved. Apr 04, 2024

Trademarks

RTI, Real-Time Innovations, Connex, Connex Drive, NDDS, the RTI logo, 1RTI and the phrase, “Your Systems. Working as one.” are registered trademarks, trademarks or service marks of Real-Time Innovations, Inc. All other trademarks belong to their respective owners.

Copy and Use Restrictions

No part of this publication may be reproduced, stored in a retrieval system, or transmitted in any form (including electronic, mechanical, photocopy, and facsimile) without the prior written permission of Real-Time Innovations, Inc. The software described in this document is furnished solely under and subject to RTI’s standard terms and conditions available at <https://www.rti.com/terms> and in accordance with your License Acknowledgement Certificate (LAC) and Maintenance and Support Certificate (MSC), except to the extent otherwise accepted in writing by a corporate officer of RTI.

Securing a distributed, embedded system is an exercise in user risk management. RTI expressly disclaims all security guarantees and/or warranties based on the names of its products, including SECURITY PLUGINS (*RTI Security Plugins*) and SECURITY PLUGINS SDK (*RTI Security Plugins SDK*). Visit <https://www.rti.com/terms/> for complete product terms and an exclusive list of product warranties.

Third-Party Software

RTI software may contain independent, third-party software or code that are subject to third-party license terms and conditions, including open source license terms and conditions. Copies of applicable third-party licenses and notices are located at community.rti.com/documentation. IT IS YOUR RESPONSIBILITY TO ENSURE THAT YOUR USE OF THIRD-PARTY SOFTWARE COMPLIES WITH THE CORRESPONDING THIRD-PARTY LICENSE TERMS AND CONDITIONS.

Notices

Deprecations and Removals

Any deprecations or removals noted in this document serve as notice under the Real-Time Innovations, Inc. Maintenance Policy #4220 and/or any other agreements by and between RTI and customer regarding maintenance and support of RTI's software.

Deprecated means that the item is still supported in the release, but will be removed in a future release. *Removed* means that the item is discontinued or no longer supported. By specifying that an item is deprecated in a release, RTI hereby provides customer notice that RTI reserves the right after one year from the date of such release and, with or without further notice, to immediately terminate maintenance (including without limitation, providing updates and upgrades) for the item, and no longer support the item, in a future release.

Technical Support Real-Time Innovations, Inc. 232 E. Java Drive Sunnyvale, CA 94089 Phone: (408) 990-7444 Email: support@rti.com Website: <https://support.rti.com/>

Chapter 2 Supported Platforms

See [Supported Platforms](#), in the RTI Connext Core Libraries Release Notes.

Chapter 3 Compatibility

For backward-compatibility information between this and previous releases, see the *Migration Guide* on the RTI Community Portal (<https://community.rti.com/documentation>).

Launcher has been tested with AdoptOpenJDK 17.0.6, which is included in the installation package.

To run *Launcher* on a Linux platform: *Launcher* requires at least GTK™ 3 version 3.20.0 and its dependencies.

Chapter 4 What's New in 7.3.0 LTS

Connex 7.3.0 is a Long-Term Support (LTS) release that is built upon and combines all of the features in releases 7.0.0, 7.1.0, and 7.2.0 (see *Previous Releases*). See the [Connex Releases](#) page on the RTI website for more information on RTI's software release model.

4.1 New button in Tools panel runs PlotJuggler RTI Edition

The Tools panel has been updated to add a new button to run PlotJuggler RTI Edition. This new button downloads and installs the product if it is not already installed. Once installed, clicking the button will start PlotJuggler.

4.2 New API panel contains direct links to API documentation

A new panel, API, has been added to *Launcher* containing links to consult the extensive API documentation.

4.3 Removed Labs panel

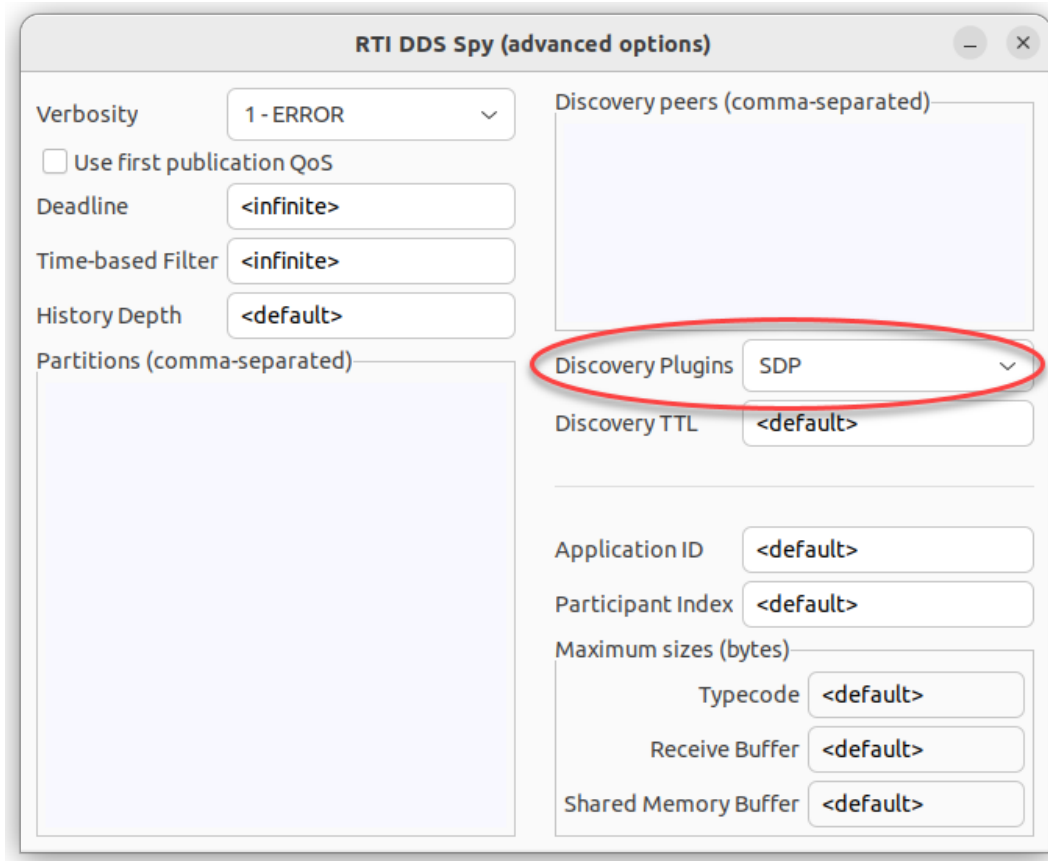
The Labs panel has been removed and its content moved to other panels. To distinguish an experimental product from a non-experimental product, a small icon displays in the lower-left corner and an (**experimental**) label is added.

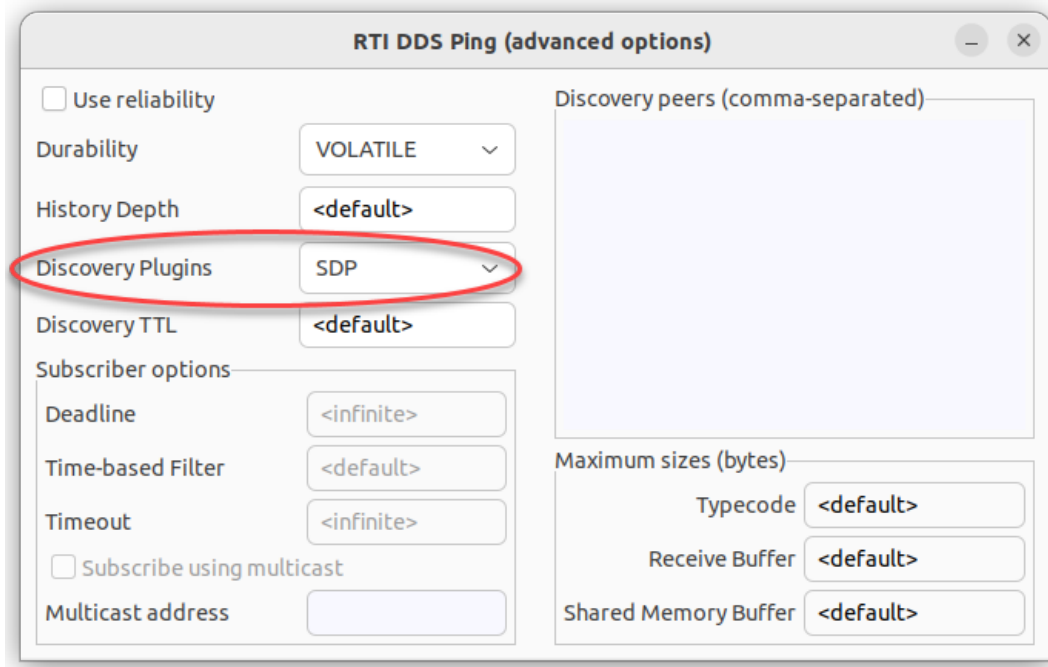


Log Parser (experimental)

4.4 New option in DDS Ping and DDS Spy configures Builtin Discovery Plugins

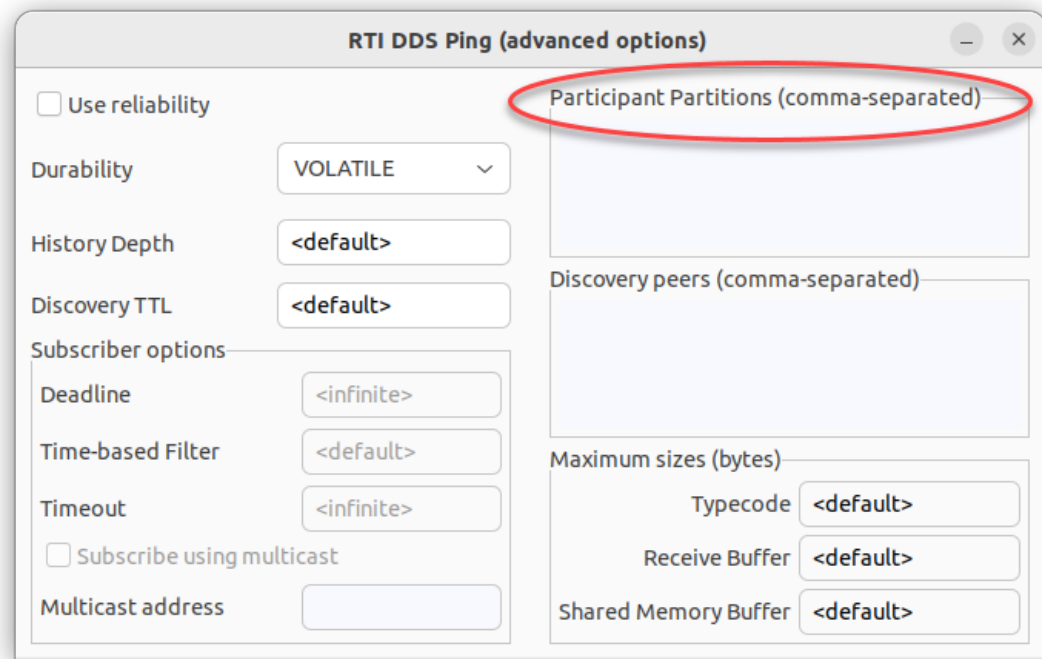
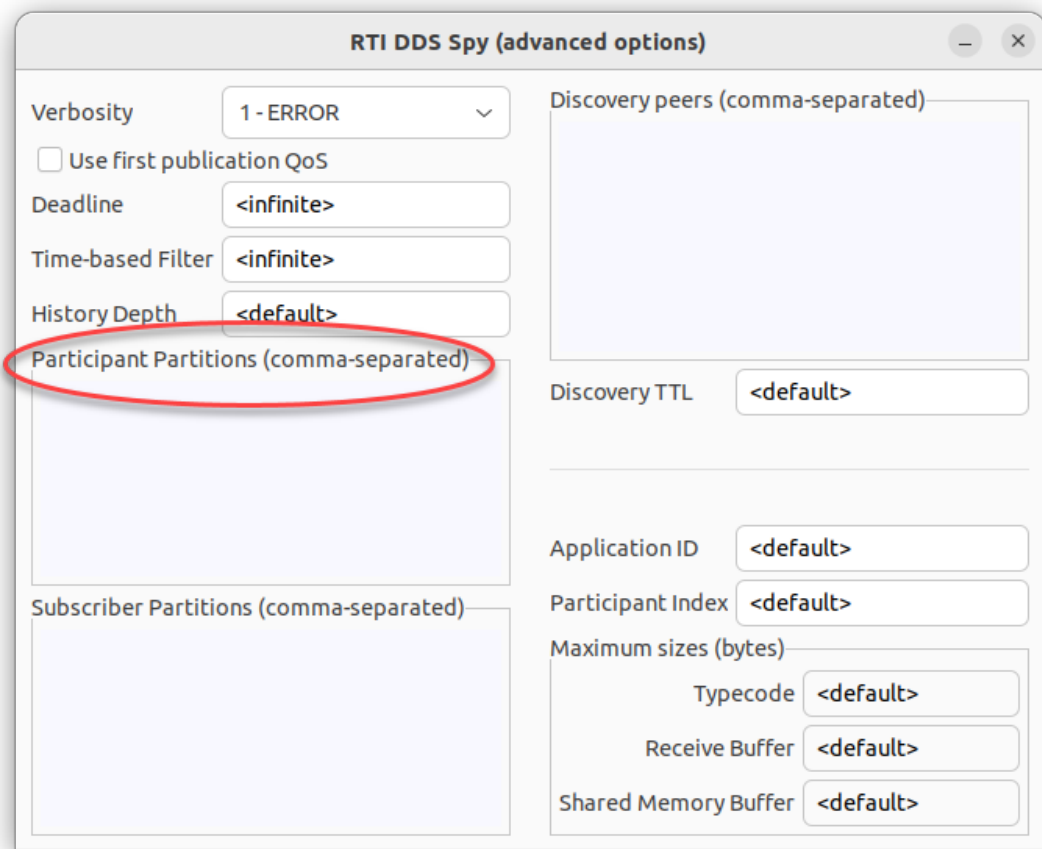
A new option, Discovery Plugins, has been added to the Advanced Options dialog for *Ping* and *Spy* to support configuring the Builtin Discovery Plugins. See [DISCOVERY_CONFIG QoSPolicy \(DDS Extension\)](#) in the *Core Libraries User's Manual* for information on the `builtin_discovery_plugins` options.





4.5 DDS Ping and DDS Spy support configuring participant partitions

A new option, Participant Partitions, has been added to the Advanced Options dialog for *Ping* and *Spy* to support configuring *DomainParticipant* partitions. See [PARTITION QosPolicy](#) in the *Core Libraries User's Manual* for more information on *DomainParticipant* partitions.



4.6 Third-Party software changes

The following third-party software used by *Launcher* has been upgraded:

Table 4.1: Third-Party Software Upgrades

Third-Party Software	Old Version	New Version
SWT	4.19 and 4.15	4.30
Apache Commons Lang	3.4	3.13
Apache Commons Exec	1.1	1.3
Apache Commons IO	2.11	2.13

For information on third-party software used by *Connex* products, see the “3rdPartySoftware” documents in your installation: <NDDSHOME>/doc/manuals/connex_dds_professional/release_notes_3rdparty.

Chapter 5 Previous Releases

5.1 What's New in 7.2.0

5.1.1 Updated Ecosystem panel

The **Ecosystem** panel has been updated to display the applications from RTI's partners as a list, instead of buttons like other Launcher panels.

5.1.2 Updated What's New panel

The **What's New** panel was updated to clearly indicate the selected information type.

- When a button is selected, the button text is now bolded to indicate the selection
- The title now updates based on the button selected:
 - What's New: What's New in Connext <VERSION>
 - News: RTI News Releases
 - Blogs: RTI Blog

5.1.3 Updated Utilities panel

The **Utilities** panel was updated as follows:

- **Connector for Python®** and **Connector for JavaScript®** were removed from the panel.
- The **Perftest** icon now downloads and installs **Perftest** from the RTI github repository. Once installed, clicking **Perftest** opens a new dialog from which the utility can be run.

5.1.4 Third-party software changes

The following third-party software used by *Launcher* has been upgraded:

Third-Party Software	Previous Version	Current Version
AdoptOpenJDK	11.0.13	17.0.6
AdoptOpenJRE	11.0.13	17.0.6

For information on third-party software used by *Connex* products, see the “3rdPartySoftware” documents in your installation: `<NDDSHOME>/doc/manuals/connex_dds_professional/release_notes_3rdparty`.

5.2 What’s Fixed in 7.2.0

[Critical]: System-stopping issue, such as a crash or data loss. [Major]: Significant issue with no easy workaround. [Minor]: Issue with an available workaround. [Trivial]: Small issue, such as a typo in a log.

5.2.1 [Critical] Launcher crashed when a dialog contained an invalid value

Launcher may have failed to access the platform-specific icons for Warnings, Errors, Info, and Questions, causing *Launcher* to crash when a dialog contained an invalid value. This issue also caused some dialogs, like *Code Generator* and *Connex Professional Terminal*, to not open. This issue has been resolved.

[RTI Issue ID LAUNCHER-722]

5.2.2 [Trivial] Connex Professional Terminal did not configure OpenSSL in PATH

*

The terminal launched on selecting the *Connex Professional Terminal* icon did not add OpenSSL in the PATH. This problem has been resolved. *Launcher* now calls `rtisetenv_<architecture>`, which configures OpenSSL in the PATH, on selecting *Connex Professional Terminal*.

[RTI Issue ID LAUNCHER-694]

* *This bug does not affect you if you are upgrading from 6.1.x or earlier.*

5.3 What’s New in 7.1.0

5.3.1 Option in Web Integration Service dialog to enable builtin topics

There is a new option in the Advanced Options dialog for Web Integration Service to enable support for builtin topics.

5.3.2 Launcher displays correct mode (Drive or Professional) when both products are installed

Previously, if both *Connex Drive* and *Connex Professional* were installed on the same machine, you had to remove the workspace each time you wanted to run the second installation because the workspace was shared between the two products. This has been changed so now *Launcher* will detect the mode at startup.

5.3.3 Code Generator dialog now accepts directories as input and to search for files recursively

The *Code Generator* dialog now accepts directories as input. When using a directory as an input, *Launcher* will automatically add the **-inputIDL** or **-inputXML** option. There is also a new checkbox to search for files recursively.

5.4 What's Fixed in 7.1.0

[Critical]: System-stopping issue, such as a crash or data loss. [Major]: Significant issue with no easy workaround. [Minor]: Issue with an available workaround. [Trivial]: Small issue, such as a typo in a log.

5.4.1 [Minor] Local link to Ping documentation pointed to Spy documentation *

The local link to the *DDS Ping* documentation pointed to the *DDS Spy* documentation. This issue has been resolved.

[RTI Issue ID LAUNCHER-668]

* *This bug does not affect you if you are upgrading from 6.1.x or earlier.*

5.5 What's New in 7.0.0

5.5.1 'Copy Connex Micro SDK' Button no longer Copies Connex Micro Documentation

In previous releases, the **Copy Connex Micro SDK** button copied the entire *Connex Micro* installation directory. This caused broken links between *Connex Micro* and *Connex Core Libraries* documentation. This issue has been resolved; the **Copy Connex Micro SDK** button will now only copy the *Connex Micro* source code and the examples; it will not copy the *Connex Micro* documentation, *Code Generator*, or *Micro Application Generator*. Documentation must be accessed via *Launcher* or the *Connex Micro* installation directory.

5.5.2 User Entry of OpenSSL Path no longer Required

You no longer need to specify the path to OpenSSL, because OpenSSL is always installed under `$NDDSHOME/third_party/openssl-<version>`.

The OpenSSL fields have been removed from the dialogs for opening *Connex Professional* and *Connex Micro* terminals.

5.5.3 C++/CLI and Legacy .NET Options Removed from Code Generator Dialog

The C# (Legacy) and C++/CLI (Legacy .NET only) language options have been removed from the *Code Generator* dialog.

These changes have been made because the **-language C++/CLI** and **-dotnet legacy** options have been removed from *Code Generator*. See “What’s New in 4.0.0” in the *RTI Code Generator Release Notes* for more information.

5.5.4 Code Generator Dialog’s Language Choices now Include Python

The language drop-down list in the Code Generator dialog has been updated to include Python.

5.5.5 Persistence Service Advanced Options Dialog now Allows Setting the Restore State to Persistent Storage

The Persistence Service Advanced Options dialog has been updated to allow you to set the Restore state to any of its supported values. Now you can use **-restore 1**, **-restore 0**, or omit the **-restore** option. Previously **-restore 1** was not supported.

5.5.6 Launcher Automatically Updates to Reflect Changes from Installed RTI Packages

Previously, if the installation or removal of an RTI Package (*.rtipkg) caused a button or tab to be added or removed in *Launcher*, you had to restart *Launcher* to see the change. *Launcher* has been updated to automatically update its content if a change is detected while *Launcher* is running.

5.5.7 New Location for Configuration Files for Labs Panel

The configuration files for the Labs panel are now in the *Connex* installation directory, instead of `rti_workspace`. You will find these files in `NDDSHOME>/resource/app/app_support/launcher/panels`.

5.5.8 Validated Windows Platforms added to Code Generator Dialog's Platforms Menu

In the Code Generator dialog, the choices in the Platforms drop-down menu now include validated Windows platforms such as x64Win64VS2019 and x64Win64VS2022.

5.5.9 New Configuration Options for Launcher Tabs

The configuration file has been updated to allow you to:

- Specify the position of a tab in *Launcher*.
- Specify which tab is selected by default (if the License File has been set).
- Split a tab into two sub-panels.

For more information about these new configurations, see Section 3.1.1, Configuration File, in the *Launcher User's Manual*.

5.5.10 Updates to DDS Spy Dialog

The DDS Spy dialog has been updated with new options to:

- Configure what type of data (discovery data, user data) will be displayed (**-mode <USERIDISC>**). If **-mode** is omitted, both types are displayed.
- Display the entity name (**-showEntityName**)
- Display the partition (**-showPartition**) to which an entity belongs

The **Print Sample** option has been updated so you can configure which type of sample information DDS Spy will display (plain or compact). The default is plain.

The **Truncate** option has been removed, since DDS Spy no longer supports it.

5.6 What's Fixed in 7.0.0

[Critical]: System-stopping issue, such as a crash or data loss. [Major]: Significant issue with no easy workaround. [Minor]: Issue with an available workaround. [Trivial]: Small issue, such as a typo in a log.

5.6.1 [Major] Launcher crashed when reopening Code Generator dialog after closing it

Launcher crashed when reopening the *Code Generator* dialog after closing it. This problem has been resolved.

[RTI Issue ID LAUNCHER-599]

5.6.2 [Major] Unable to start some tools on Windows systems in certain cases

On Windows systems, *Launcher* (as well as *Admin Console* and *Monitor*) failed to start when the installation path contained white spaces and the user did not have admin privileges. This problem has been resolved.

[RTI Issue ID LAUNCHER-602]

5.6.3 [Major] Possible crash when using unsupported image format

Launcher may have crashed when using an unsupported image format such as **.webp**. This problem has been resolved. Now, *Launcher* will report an error when trying to use an image whose format is not one of the following: **wimp, .gif, .ico, .jpeg, .png, .tiff, .bmp**.

[RTI Issue ID LAUNCHER-605]

5.6.4 [Minor] Migration Guide in Help menu pointed to invalid URL

The *Migration Guide* in the Help menu pointed to an invalid URL. This problem has been resolved.

[RTI Issue ID LAUNCHER-620]

5.6.5 [Minor] Licensed RTI Services failed to run from Launcher in LM version

Licensed RTI Services, such as *RTI Routing Service*, failed to run from *Launcher* in the License-Managed (LM) version if you skipped copying the license file to a known location. This issue has been resolved.

[RTI Issue ID LAUNCHER-653]

* *This bug does not affect you if you are upgrading from 6.1.x or earlier.*

Chapter 6 Known Issues

Note: For an updated list of critical known issues, see the Critical Issues List on the [RTI Customer Portal](#).

6.1 Error when Updating GTK2 Libraries on Linux Platforms

If you update the GTK2 libraries on a Linux system and click on the textbox, *Launcher* will crash and show this error:

```
java: cairo-misc.c:380: _cairo_operator_bounded_by_source: Assertion `NOT_
↪REACHED' failed.
./rti_connnext_dds-5.2.0/bin/rtilauncher: line 48: 17317 Aborted (core dumped)
↪"$JREHOME/bin/java" -jar "$rti_launcher.jar"
```

To resolve this problem, modify the *Launcher* script (<NDDSHOME>/bin/rtilauncher). Add the following to the java call in the **rtilauncher** script:

```
-Dorg.eclipse.swt.internal.gtk.cairoGraphics=false
```

When you are done, it should look like this:

```
"$JREHOME/bin/java" -Dorg.eclipse.swt.internal.gtk.cairoGraphics=false -jar "
↪$rti_launcher.jar"
```

[RTI Issue ID LAUNCHER-151]

6.2 Launcher Fails to Copy License from Network Location into an Administrator Owner Directory

Launcher fails to copy the license from a network location into an administrator owner directory. This is because *Launcher* tries to copy the license using a command prompt with administration privileges, which cannot access the shared folder because it is running in a different user context.

[RTI Issue ID LAUNCHER-181]

6.3 GLib Warnings when Opening Dialogs

On certain Linux platforms, you may see the following warning when opening a dialog:

```
(RTI Launcher:2680): GLib-CRITICAL **: .... Source ID 1968 was not found when...
↳ attempting to remove it
```

This warning is harmless. It happens because `g_source_remove()` is called to disconnect a source that was already disconnected. (*Launcher* doesn't call that function, but does call some of its dependent libraries.)

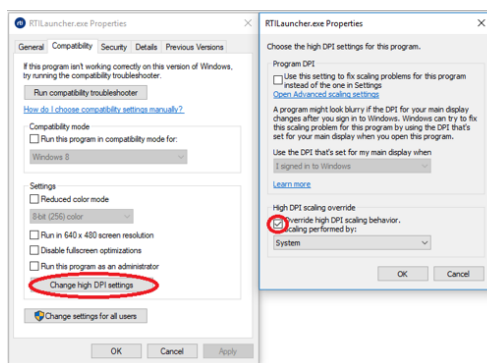
[RTI Issue ID LAUNCHER-382]

6.4 Launcher not Scaled Properly for Intermediate Factors on High-DPI Displays on Windows Platforms

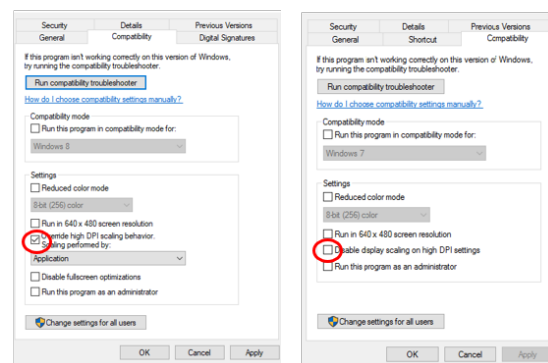
SWT (the library used to build *Launcher*) automatically scales images on high-DPI monitors based on the resolution of the monitor; however, this scaling works only with integer scaling factors (100%, 200%, etc.) by default. Therefore, *Launcher* is not scaled properly when using intermediate scaling factors (125%, 150%, etc.) on high-DPI displays on Windows platforms.

The workaround is to change the scaling behavior from **Application** to **System**. For example, on Windows 10 platforms:

1. Right click the **RTILauncher.exe** executable and select Properties.
2. Navigate to the Compatibility tab and choose the “Change high DPI settings” button.
3. Select the “Override high DPI scaling behavior” check box and change **Application** to **System** in the drop-down menu.
4.
 - The “Override high DPI scaling behavior” check box may be located in the Compatibility tab.
 - The check box may be called “Disable display scaling on high DPI settings” located in the Compatibility tab.



Windows 10



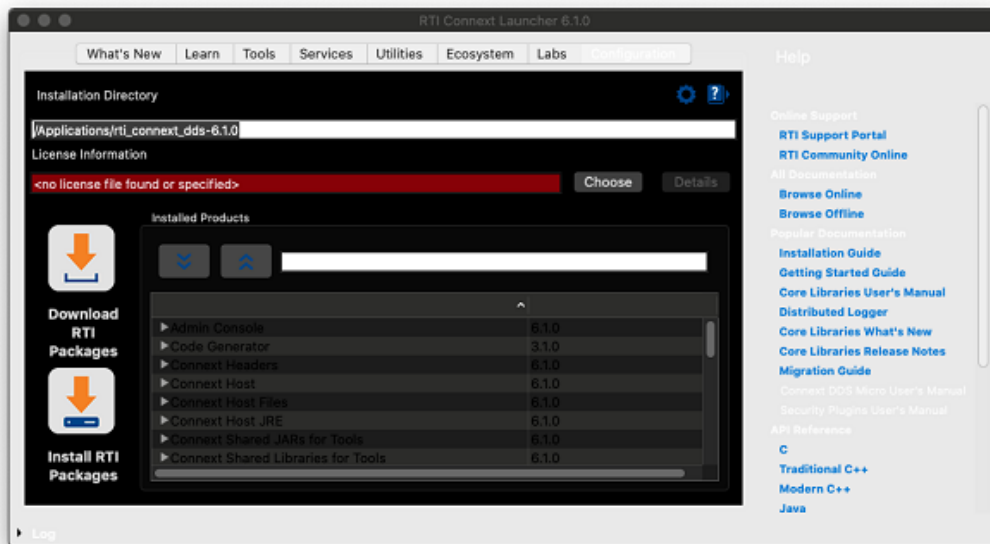
Older Windows 10 versions

[RTI Issue ID LAUNCHER-387]

6.5 Appearance Issues on macOS 10.15 Platforms (Catalina)

Launcher shows some appearance issues on macOS 10.15 platforms (Catalina):

- If the appearance mode is set to Auto, *Launcher* will mix the Light and Dark appearances.
- Changing the appearance mode from Light to Dark, or vice versa, will also mix the Light and Dark appearances of *Launcher*.



In both cases, changing the appearance mode to Light or Dark and reopening *Launcher* will fix the appearance issue.

[RTI Issue ID LAUNCHER-510]

6.6 Drag-and-drop does not Work when Running Launcher as Administrator on Windows Systems

The drag-and-drop feature doesn't work when running *Launcher* as an Administrator on a Windows system.

[RTI Issue ID LAUNCHER-607]

6.7 Launcher Fails to Start Terminal Applications in macOS Ventura

Due to a known issue in macOS Ventura versions 13.3 and lower, *Launcher* fails to start any applications that run in a terminal window (for example, *Routing Service*). Upgrading to the latest macOS version resolves this issue.

[RTI Issue ID LAUNCHER-741]