

RTI Connex DDS

Core Libraries

XML-Based Application Creation

Getting Started Guide

Version 6.1.2



© 2023 Real-Time Innovations, Inc.
All rights reserved.
Printed in U.S.A. First printing.
September 2023.

Trademarks

RTI, Real-Time Innovations, Connex, NDDS, the RTI logo, 1RTI and the phrase, “Your Systems. Working as one.” are registered trademarks, trademarks or service marks of Real-Time Innovations, Inc. All other trademarks belong to their respective owners.

Copy and Use Restrictions

No part of this publication may be reproduced, stored in a retrieval system, or transmitted in any form (including electronic, mechanical, photocopy, and facsimile) without the prior written permission of Real-Time Innovations, Inc. The software described in this document is furnished solely under and subject to RTI's standard terms and conditions available at <https://www.rti.com/terms> and in accordance with your License Acknowledgement Certificate (LAC) and Maintenance and Support Certificate (MSC), except to the extent otherwise accepted in writing by a corporate officer of RTI.

This is an independent publication and is neither affiliated with, nor authorized, sponsored, or approved by, Microsoft Corporation.

The security features of this product include software developed by the OpenSSL Project for use in the OpenSSL Toolkit (<http://www.openssl.org/>). This product includes cryptographic software written by Eric Young (eay@cryptsoft.com). This product includes software written by Tim Hudson (tjh@cryptsoft.com).

Notice

Any deprecations or removals noted in this document serve as notice under the Real-Time Innovations, Inc. Maintenance Policy #4220 and/or any other agreements by and between RTI and customer regarding maintenance and support of RTI's software.

Deprecated means that the item is still supported in the release, but will be removed in a future release. *Removed* means that the item is discontinued or no longer supported. By specifying that an item is deprecated in a release, RTI hereby provides customer notice that RTI reserves the right after one year from the date of such release and, with or without further notice, to immediately terminate maintenance (including without limitation, providing updates and upgrades) for the item, and no longer support the item, in a future release.

Technical Support

Real-Time Innovations, Inc.
232 E. Java Drive, Sunnyvale, CA 94089
Phone: (408) 990-7444
Email: support@rti.com
Website: <https://support.rti.com/>

Contents

Chapter 1 Introduction	1
Chapter 2 Paths Mentioned in Documentation	3
Chapter 3 A ‘Hello, World’ Example	
3.1 Hello World using XML and Dynamic Data	5
3.1.1 Build the Application	6
3.1.2 Run the Application	7
3.1.3 Examine the XML Configuration Files Definition	8
3.1.4 Publisher Application	12
3.1.5 Subscriber Application	14
3.1.6 Subscribing with a Content Filter	16
3.2 Hello World using XML and Compiled Types	16
3.2.1 Define the Data Types using IDL or XML	16
3.2.2 Generate Type-Support Code from the Type Definition	17
3.2.3 Build the Application	18
3.2.4 Run the Application	19
3.2.5 Examine the XML Configuration Files Definition	20
3.2.6 Examine the Publisher Application	22
3.2.7 Examine the Subscriber Application	24
Chapter 4 Using Prototyper	27
Chapter 5 Understanding XML-Based Application Creation	
5.1 Important Points	29
5.2 Loading XML Configuration Files	29
5.3 XML Syntax and Validation	30
5.3.1 Validation at Run Time	30
5.3.2 Validation during Editing	30
5.4 Accessing Entities Defined in XML Configuration from an Application	31

5.5 XML Tags for Configuring Entities	32
5.5.1 Domain Library	33
5.5.2 Participant Library	37
5.6 Names Assigned to Entities	44
5.6.1 Referring to Entities and Other Elements within XML Files	46
5.7 Creating and Retrieving Entities Configured in an XML File	47
5.7.1 Creating and Retrieving a DomainParticipant Configured in an XML File	47
5.7.2 Creating and Retrieving Publishers and Subscribers	48
5.7.3 Creating and Retrieving DataWriters and DataReaders	49
5.7.4 Creating Content Filters	50
5.7.5 Using User-Generated Types	50
Chapter 6 Connex DDS Micro Application Generator	
6.1 Paths Mentioned in Documentation	53
6.2 Command-Line Options	55
6.3 Generated Files	56
6.3.1 Integrating Generated Files into Your Application's Build	57
6.4 A "Hello, World" Example	57
6.4.1 Generate Type-Support Code from the Type Definition	57
6.4.2 Generate DDS Entities from the System Definition	59
6.4.3 Examine the XML Configuration Files and the Generated Code	60
6.4.4 QoS Definition	68
6.4.5 Transport and Discovery Configuration	79
6.4.6 Flow Controllers	81
6.4.7 Static Discovery	83
6.4.8 RTI Security Plugins	88
6.5 Using Environment Variables in XML	90
6.6 Errors Caused by Invalid Configurations	91
6.7 Unsupported QoS	93

Chapter 1 Introduction

This document assumes you have a basic understanding of *RTI® Connex® DDS* application development and concepts such as *Domains*, *DomainParticipants*, *Topics*, *DataWriters* and *DataReaders*. For an overview of these concepts, please see the [RTI Connex DDS Getting Started Guide](https://community.rti.com/documentation), which is part of your distribution, or you can find it online at <https://community.rti.com/documentation>.

XML-Based Application Creation is a mechanism to simplify the development and programming of *Connex DDS* applications. *Connex DDS* supports the use of XML for the complete system definition. This includes not only the definition of the data types and Quality of Service settings, but also the definition of the *Topics*, *DomainParticipants*, and all the *Entities* they contain (*Publishers*, *Subscribers*, *DataWriters* and *DataReaders*).

With the traditional approach, an application developer must program explicitly into the code the actions needed to join a domain, register the data types it will use, create the *Topics* and all the *Entities* (*Publishers*, *Subscribers*, *DataReaders* and *DataWriters*) that the application uses. Even for simple applications this “system creation” code can result in hundreds of lines of boiler-plate code. Besides being error prone, the traditional approach results in larger code-bases that are harder to understand and maintain. Using XML-Based Application Creation can significantly simplify this process.

XML-Based Application Creation is a simple layer that builds on top of the standard APIs. Everything that you do with the XML configuration can also be done with the underlying APIs. In this manner, an application can be initially developed using XML-Based Application Creation and transitioned to the traditional API at a later time. This would be useful in case the application has to be deployed on a platform without a file system or needs to be ported to a DDS-compliant library that does not support XML-based configuration.

Using XML-Based Application Creation is easy: simply edit **USER_QOS_PROFILE.xml** to define:

- The data types that will be used to communicate information in the system
- The *Topics* that will be used in the domain, associating each *Topic* with a data type
- The *DomainParticipants* that can potentially be used, giving each a **participant name**
- The *DataWriters* and *DataReaders* present within each *DomainParticipant*, each associated with its corresponding *Topic*.

The application code simply indicates the **participant configuration name** of the *DomainParticipant* that the application wants to create. The XML-Based Application Creation infrastructure takes care of the rest: creating the *DomainParticipant*, registering the types and *Topics*, and populating all the configured *Entities*.

When the application needs to read or write data, register listeners, or perform any other action, it simply looks up the appropriate *Entity* by name and uses it.

XML-Based Application Creation enables several powerful work flows:

- Developers can describe all the *Entities* that a *Connex DDS* application will need in an XML file and then create that application with a single function call, saving many hundreds of lines of setup code.
- Application descriptions written in XML are usable from all programming languages.
- The complete domain (including the data types and *Topics* that can be in the domain) can be defined in an XML file and shared among all the developers and applications.
- The Quality of Service (QoS) that should be used for each *DomainParticipant*, *Topic*, *DataReader*, and *DataWriter* can be fully specified in the XML and shared among a group of developers and applications.
- The XML description of the application can be used in combination with *RTI Prototyper* to design and prototype application deployment scenarios, allowing quick testing and validation without the need for programming.

To use the companion *RTI Prototyper*, see [Using Prototyper \(Chapter 4 on page 27\)](#).

Chapter 2 Paths Mentioned in Documentation

The documentation refers to:

- **<NDDSHOME>**

This refers to the installation directory for *RTI® Connex® DDS*. The default installation paths are:

- macOS® systems:
/Applications/rti_connex_dds-6.1.2
- Linux systems, non-*root* user:
/home/<your user name>/rti_connex_dds-6.1.2
- Linux systems, *root* user:
/opt/rti_connex_dds-6.1.2
- Windows® systems, user without Administrator privileges:
<your home directory>\rti_connex_dds-6.1.2
- Windows systems, user with Administrator privileges:
C:\Program Files\rti_connex_dds-6.1.2

You may also see **\$NDDSHOME** or **%NDDSHOME%**, which refers to an environment variable set to the installation path.

Wherever you see **<NDDSHOME>** used in a path, replace it with your installation path.

Note for Windows Users: When using a command prompt to enter a command that includes the path **C:\Program Files** (or any directory name that has a space), enclose the path in quotation marks. For example:

```
"C:\Program Files\rti_connex_dds-6.1.2\bin\rtiddsgen"
```

Or if you have defined the **NDDSHOME** environment variable:

```
"%NDDSHOME%\bin\rtiddsgen"
```

- **<path to examples>**

By default, examples are copied into your home directory the first time you run *RTI Launcher* or any script in **<NDDSHOME>/bin**. This document refers to the location of the copied examples as **<path to examples>**.

Wherever you see **<path to examples>**, replace it with the appropriate path.

Default path to the examples:

- macOS systems: ***/Users/<your user name>/rti_workspace/6.1.2/examples***
- Linux systems: ***/home/<your user name>/rti_workspace/6.1.2/examples***
- Windows systems: ***<your Windows documents folder>\rti_workspace\6.1.2\examples***

Where 'your Windows documents folder' depends on your version of Windows. For example, on Windows 10, the folder is ***C:\Users\<your user name>\Documents***.

Note: You can specify a different location for ***rti_workspace***. You can also specify that you do not want the examples copied to the workspace. For details, see *Controlling Location for RTI Workspace and Copying of Examples* in the *RTI Connex DDS Installation Guide*.

Chapter 3 A ‘Hello, World’ Example

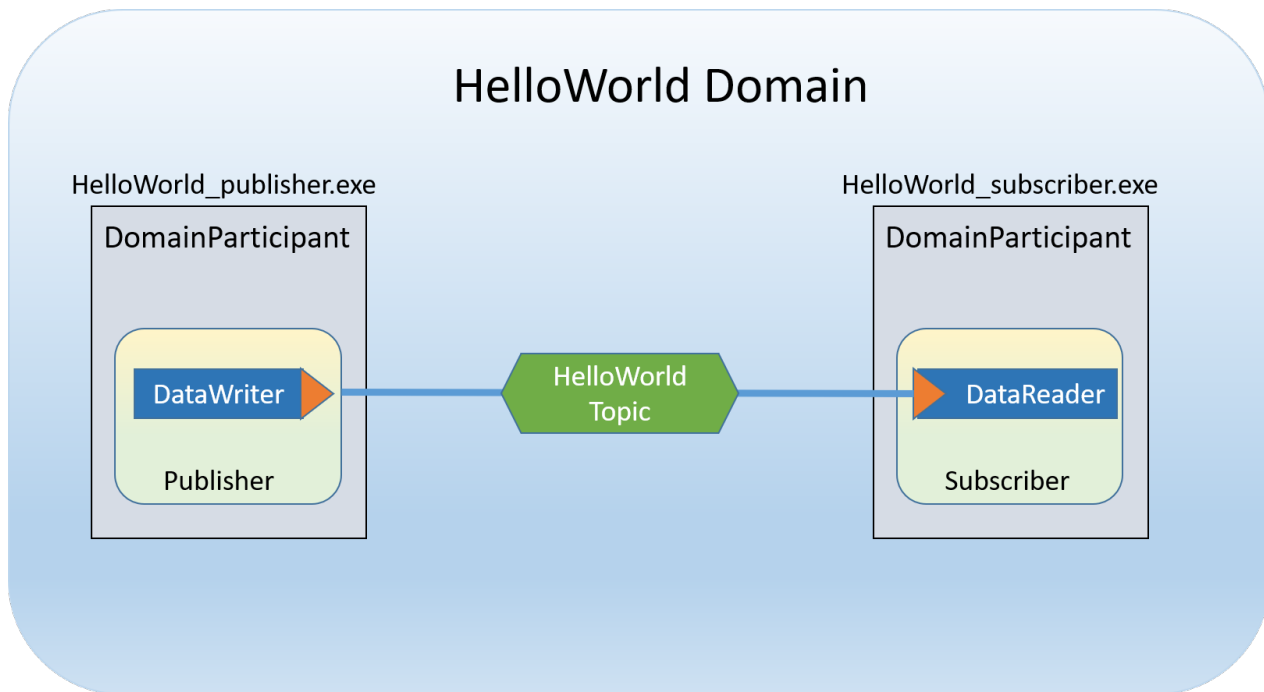
This chapter assumes that you have installed *Connex DDS* and configured your environment correctly. If you have not done so, please follow the steps in the [RTI Connex DDS Installation Guide](#), and Set Up Environment Variables (rtisetenv), in "Hands-On 1" of *Introduction to Publish/Subscribe*, in the [RTI Connex DDS Getting Started Guide](#). These guides are part of your distribution; you can also find them online at <https://community.rti.com/documentation>. The *Getting Started Guide* will help you set both your environment variable NDDSHOME and, depending on your architecture, the environment variable PATH (on Windows® systems), LD_LIBRARY_PATH (on Linux® systems), or DYLD_LIBRARY_PATH (on macOS® systems).

3.1 Hello World using XML and Dynamic Data

The files for this example are in the directory `<path to examples>/connex_dds/c++/hello_world_xml_dynamic`. See [Chapter 2 Paths Mentioned in Documentation on page 3](#).

This simple scenario consists of two applications, illustrated in the figure below: **HelloWorld_publisher.exe**, which writes the *Topic*, **HelloWorldTopic**, and **HelloWorld_subscriber.exe**, which subscribes to that *Topic*.

Figure 3.1: Hello World Domain



First we will build and run the application, then we will examine the configuration file and source code.

3.1.1 Build the Application

The example code is provided in C++, C#, and Java. The following instructions describe how to build it on Windows, Linux, and macOS systems. If you will be using an embedded platform, see the [RTI Connext DDS Core Libraries Getting Started Guide Addendum for Embedded Systems](#) for instructions specific to these platforms.

To build the example C++ applications on a Windows system:

1. In Windows Explorer, go to `<path to examples>\connext_dds\c++\hello_world_xml_dynamic\win32` and open the Microsoft® Visual Studio® solution file for your architecture. For example, the file for Visual Studio 2017 32-bit platforms is **Hello-i86Win32VS2017.sln**.

Note: If your Windows SDK Version is not 10.0.15063.0, you may be prompted to retarget the file. If this happens, in the Retarget Projects window that appears, select an installed version of Windows SDK and click OK.

2. The Solution Configuration combo box in the toolbar indicates whether you are building debug or release executables; select **Release**. Then select **Build Solution** from the Build menu.

To build the example C++ applications on a Linux or macOS system:

1. From your command shell, change directory to **<path to examples>/connext_dds/c++/hello_world_xml_dynamic**.
2. Type:

```
make -f make/Makefile.<architecture>
```

where **<architecture>** is one of the supported architectures (e.g., **Makefile.armv8Linux4gcc7.3.0**); see the contents of the make directory for a list of available architectures. This command will build a release executable. To build a debug version instead, type:

```
make -f make/Makefile.<architecture> DEBUG=1
```

3.1.2 Run the Application

The previous step should have built one executable: **Hello.exe**. This application should be in the proper architecture subdirectory under the **objs** directory (for example, **objs\x64Win64VS2017** in the Windows example cited below and **objs/armv8Linux4gcc7.3.0** in the Linux example).

To start the publishing application on a Windows system:

From your command shell, go to **<path to examples>\connext_dds\c++\hello_world_xml_dynamic** and type:

```
objs\<<architecture>\Hello pub
```

where **<architecture>** is the architecture you just built; look in the **objs** directory to see the name of the architecture you built. For example, the Windows architecture name corresponding to 32-bit Visual Studio 2017 is **i86Win32VS2017**.

To start the publishing application on a Linux or macOS system:

From your command shell, change directory to **<path to examples>/connext_dds/c++/hello_world_xml_dynamic** and type:

```
objs/<architecture>/Hello pub
```

where **<architecture>** is the architecture you just built; look in the **objs** directory to see the name of the architecture you built. For example, **armv8Linux4gcc7.3.0**.

To start the subscribing application on a Windows system:

From a different command shell, go to **<path to examples>\connext_dds\c++\hello_world_xml_dynamic** and type:

```
objs\<<architecture>\Hello sub
```

where **<architecture>** is the architecture you just built; look in the **objs** directory to see the name of the architecture you built. For example, the Windows architecture name corresponding to 32-bit Visual

Studio 2017 is **i86Win32VS2017**.

To start the subscribing application on a Linux or macOS system:

From a different command shell, change directory to `<path to examples>/connext_dds/c++/hello_world_xml_dynamic` and type:

```
objs/<architecture>/Hello sub
```

where `<architecture>` is the architecture you just built; look in the **objs** directory to see the name of the architecture you built. For example, **armv8Linux4gcc7.3.0**.

You should immediately see some messages from the publishing application showing that it is writing data and messages from the subscribing application showing the data it receives. Do not worry about the contents of the messages. They are generated automatically for this example. The important thing is to understand how the application is defined, which will be explained in the following sections.

3.1.3 Examine the XML Configuration Files Definition

A *Connext DDS* application is defined in the file **USER_QOS_PROFILES.xml** found in the directory `<path to examples>/connext_dds/c++/hello_world_xml_dynamic`. Let's review its content to see how this scenario was constructed. The main sections in the file are:

- [3.1.3.1 QoS Definition on the next page](#)
- [3.1.3.2 Type Definition on page 10](#)
- [3.1.3.3 Domain Definition on page 10](#)
- [3.1.3.4 Participant Definition on page 11](#)

The entire file is shown below. We will examine the file section-by-section.

```
<?xml version="1.0"?>
<dds version="6.1.2"
xsi:noNamespaceSchemaLocation=
"http://community.rti.com/schema/current/rti_dds_profiles.xsd"
xmlns:xsi="http://www.w3.org/2001/XMLSchema-instance">

  <!-- Qos Library -->
  <qos_library name="qosLibrary">
    <qos_profile name="DefaultProfile">
    </qos_profile>
  </qos_library>

  <!-- types -->
  <types>
    <const name="MAX_NAME_LEN" value="64" type="long"/>
    <const name="MAX_MSG_LEN" value="128" type="long"/>
    <struct name="HelloWorld">
      <member name="sender" type="string">
```

```

        stringMaxLength="MAX_NAME_LEN" key="true"/>
        <member name="message" type="string"
            stringMaxLength="MAX_MSG_LEN"/>
        <member name="count" type="long"/>
    </struct>
</types>

<!-- Domain Library -->
<domain_library name="MyDomainLibrary">
    <domain name="HelloWorldDomain" domain_id="0">
        <register_type name="HelloWorldType"
            type_ref="HelloWorld"/>
        <topic name="HelloWorldTopic"
            register_type_ref="HelloWorldType">
            <topic_qos name="HelloWorld_qos"
                base_name="qosLibrary::DefaultProfile"/>
        </topic>
    </domain>
</domain_library>

<!-- Participant library -->
<domain_participant_library name="MyParticipantLibrary">
    <domain_participant name="PublicationParticipant"
        domain_ref="MyDomainLibrary::HelloWorldDomain">
        <publisher name="MyPublisher">
            <data_writer name="HelloWorldWriter"
                topic_ref="HelloWorldTopic"/>
        </publisher>
    </domain_participant>

    <domain_participant name="SubscriptionParticipant"
        domain_ref="MyDomainLibrary::HelloWorldDomain">
        <subscriber name="MySubscriber">
            <data_reader name="HelloWorldReader"
                topic_ref="HelloWorldTopic">
                <datareader_qos name="HelloWorld_reader_qos"
                    base_name="qosLibrary::DefaultProfile"/>
            </data_reader>
        </subscriber>
    </domain_participant>
</domain_participant_library>
</dds>

```

3.1.3.1 QoS Definition

The defined DDS *Entities* have an associated QoS. The QoS section of the XML file provides a way to define QoS libraries and profiles, which can then be used to configure the QoS of the defined *Entities*.

The syntax of the QoS libraries and profiles section is described in *Configuring QoS with XML*, in the [RTI Connex DDS Core Libraries User's Manual](#) and may also contain *Entity* configurations.

In this example, the QoS library and profile are empty, just to provide a placeholder where the QoS can be specified. Using this empty profile results in the default DDS QoS being used:

```

<!-- QoS Library -->
<qos_library name="qosLibrary">

```

```

    <qos_profile name="DefaultProfile">
    </qos_profile>
</qos_library>

```

3.1.3.2 Type Definition

The data associated with the HelloWorld *Topic* consists of two strings and a numeric counter:

1. The first string contains the name of the sender of the message. This field is marked as “key” as signals the identity of the data-object.
2. The second string contains a message.
3. The third field is a simple counter which the application increments with each message.

This example uses the Dynamic Data API, so the data type must be defined in the XML configuration. You can do this by adding the type definition within the `<types>` tag:

```

<types>
  <const name="MAX_NAME_LEN" type="long" value="64"/>
  <const name="MAX_MSG_LEN" type="long" value="128"/>
  <struct name="HelloWorld">
    <member name="sender" type="string"
      key="true" stringMaxLength="MAX_NAME_LEN"/>
    <member name="message" type="string"
      stringMaxLength="MAX_MSG_LEN"/>
    <member name="count" type="long"/>
  </struct>
</types>

```

The `<types>` tag may be used to define a library containing the types that the different applications will need. You can even refer to other files containing types by using the XML include tag within the `<types>` tag. (For example: `<include file="PrimitiveTypes.xml"/>`.) For this simple example, just one data-type, the HelloWorld type seen above, is included.

3.1.3.3 Domain Definition

The domain section is used to define the system’s *Topics* and the corresponding data types associated with each *Topic*. To define a *Topic*, the associated data type must be registered with the domain, giving it a registered type name. The registered type name is used to refer to that data type within the domain at the time the *Topic* is defined.

In this example, the configuration file registers the previously defined HelloWorld type under the name HelloWorldType. Then it defines a *Topic* named HelloWorldTopic, which is associated with the registered type, referring to it by its registered name, HelloWorldType:

```

<!-- Domain Library -->
<domain_library name="MyDomainLibrary" domain_id="0" >
  <domain name="HelloWorldDomain">
    <register_type name="HelloWorldType"
      type_ref="HelloWorld"/>
  </domain>
</domain_library>

```

```

        <topic name="HelloWorldTopic"
            register_type_ref="HelloWorldType"/>
    </domain>
</domain_library>

```

Notes:

- The attribute **type_ref** in the `<register_type>` element refers to the same HelloWorld type defined in the `<types>` section.
- A domain definition may register as many data types and define as many *Topics* as it needs. In this example, a single data type and *Topic* will suffice.
- The **domain_library** can be used to define multiple domains. However, this example only uses one domain.

3.1.3.4 Participant Definition

The participant section is used to define the *DomainParticipants* in the system and the *DataWriters* and *DataReaders* that each participant has. *DomainParticipants* are defined within the `<domain_participant_library>` tag.

Each *DomainParticipant*:

- Has a unique name (within the library) which will be used later by the application that creates it.
- Is associated with a domain, which defines the **domain_id**, Topics, and data types the *DomainParticipant* will use.
- Defines the *Publishers* and *Subscribers* within the *DomainParticipant*. *Publishers* contain *DataWriters*, *Subscribers* contain *DataReaders*.
- Defines the set of *DataReaders* it will use to write data. Each *DataReader* has a QoS and a unique name which can be used from application code to retrieve it.
- Defines the set of *DataWriters* it will use to write data. Each *DataWriter* has a QoS and a unique name which can be used from application code to retrieve it.
- Optionally the *Participants*, *Publishers*, *Subscribers*, *DataWriters*, and *DataReaders* can specify a QoS profile that will be used to configure them.

The example below defines two *DomainParticipants*, called *PublicationParticipant* and *SubscriptionParticipant*:

```

<domain_participant_library name="MyParticipantLibrary">
    <domain_participant name="PublicationParticipant"
        domain_ref="MyDomainLibrary::HelloWorldDomain">
        <publisher name="MyPublisher">
            <data_writer name="HelloWorldWriter"
                topic_ref="HelloWorldTopic"/>
        </publisher>
    </domain_participant>
</domain_participant_library>

```

```

</domain_participant>
<domain_participant name="SubscriptionParticipant"
domain_ref="MyDomainLibrary::HelloWorldDomain">
  <subscriber name="MySubscriber">
    <data_reader name="HelloWorldReader"
    topic_ref="HelloWorldTopic">
      <datareader_qos name="HelloWorld_reader_qos"
      base_name="qosLibrary::DefaultProfile"/>
    </data_reader>
  </subscriber>
</domain_participant>
</domain_participant_library>

```

Examining the XML, we see that:

- PublicationParticipant is bound to the domain, MyDomainLibrary::HelloWorldDomain.
- The participant contains a single *Publisher* named MyPublisher, which itself contains a single *DataWriter* named HelloWorldWriter.
- The *DataWriter* writes the *Topic* HelloWorldTopic, which is defined in the domain MyDomainLibrary::HelloWorldDomain.

Similarly:

- SubscriptionParticipant is also bound to the domain MyDomainLibrary::HelloWorldDomain.
- The participant contains a single *Subscriber* named MySubscriber, which itself contains a single *DataReader* named HelloWorldReader.
- The *DataReader* reads the *Topic* HelloWorldTopic, which is defined in the domain MyDomainLibrary::HelloWorldDomain.

Since both participants are in the same domain and the HelloWorldWriter *DataWriter* writes the same *Topic* that the HelloWorldReader *DataReader* reads, the two participants will communicate as depicted in [Figure 3.1: Hello World Domain on page 6](#).

3.1.4 Publisher Application

Open the file `<path to examples>/connext_dds/c++/hello_world_xml_dynamic/src/HelloWorld_publisher.cxx` and look at the source code.

The logic of this simple application is contained in the `publisher_main()` function. The logic is composed of two parts:

- Entity Creation

The application first creates a *DomainParticipant* using the function `create_participant_from_config()`. This function takes the configuration name of the participant, `MyParticipantLibrary::PublicationParticipant`, which is the same name that was specified in the XML file. Note that the name in the XML file, `PublicationParticipant`, has been qualified with the name of the library it belongs to: `MyParticipantLibrary`.

```
DDSDomainParticipant * participant =
    DDSTheParticipantFactory->create_participant_from_config(
        "MyParticipantLibrary::PublicationParticipant");
```

This single function call registers all the necessary data types and creates and the *Topics* and *Entities* that were specified in the XML file. In this simple case, the participant only contains a *Publisher*, `MyPublisher`, with a single *DataWriter*, `HelloDataWriter`. However, in more realistic scenarios, this single call can create hundreds of entities (both readers and writers).

- Use of the Entities

The remaining part of the function uses the created *Entities* to perform the logic of the program.

This example writes data using the single *DataWriter*. So the application looks up the `HelloWorldWriter` *DataWriter* using the fully qualified name `MyPublisher::HelloWorldWriter` and narrows it to be a `DynamicDataWriter`:

```
DDSDynamicDataWriter * dynamicWriter =
    DDSDynamicDataWriter::narrow(participant->lookup_datawriter_by_name(
        "MyPublisher::HelloWorldWriter"));
```

Once the *DataWriter* is available, some data objects need to be created and used to send the data. As this example uses dynamic data, and the type code is internally created, you can use the operations `create_data()` and `delete_data()` in a *DataWriter* to create and delete a data object. This is achieved with the calls seen below:

```

/* Create data */
DDS_DynamicData *dynamicData =
    dynamicWriter->create_data(DDS_DYNAMIC_DATA_PROPERTY_DEFAULT);

/* Main loop to repeatedly send data */
for (count=0; count < 100 ; ++count) {
    /* Set the data fields */
    retcode = dynamicData->set_string(
        "sender", DDS_DYNAMIC_DATA_MEMBER_ID_UNSPECIFIED,
        "John Smith");
    retcode = dynamicData->set_string(
        "message", DDS_DYNAMIC_DATA_MEMBER_ID_UNSPECIFIED,
        "Hello World!");
    retcode = dynamicData->set_long(
        "count", DDS_DYNAMIC_DATA_MEMBER_ID_UNSPECIFIED,
        count);

    /* Write the data */
    retcode = dynamicWriter->write(*dynamicData, DDS_HANDLE_NIL);
    ...
}
/* Delete data sample */
dynamicWriter->delete_data(dynamicData

```

Note that operations such as `set_long()` are used to set the different attributes of the Dynamic Data object. These operations refer to the attribute names (e.g., “count”) that were defined as part of the data type.

3.1.5 Subscriber Application

Open the file `<path to examples>/connext_dds/c++/hello_world_xml_dynamic/src/HelloWorld_subscriber.cxx` and look at the source code.

The logic of this simple application is contained in the `subscriber_main()` function. Similar to the publisher application, the logic is composed of two parts:

- Entity Creation

The application first creates a *DomainParticipant* using the function `create_participant_from_config()`. This function takes the configuration name of the participant `MyParticipantLibrary::SubscriptionParticipant`, which is the same name that was specified in the XML file. Notice that the name in the XML file, `SubscriptionParticipant`, has been qualified with the name of the library it belongs to: `MyParticipantLibrary`.

```

DDSDomainParticipant * participant =
    DDSTheParticipantFactory->create_participant_from_config(
        "MyParticipantLibrary::SubscriptionParticipant");

```

This single function call registers all the necessary data types and creates and the *Topics* and *Entities* that were specified in the XML file. In this simple case, the participant only contains a *Subscriber*,

MySubscriber, with a single *DataReader*, **HelloDataReader**. However in more realistic scenarios, this single call can create hundreds of *Entities* (both *DataReaders* and *DataWriters*).

- Use of the Entities

The remaining part of the function uses the entities that were created to perform the logic of the program.

This example only needs to read data using the single *DataReader*. So the application looks up the `HelloWorldReader` *DataReader* using the fully qualified name `MySubscriber::HelloWorldReader` and narrows it to be a `DynamicDataReader`:

```
DDSDynamicDataReader * dynamicReader = DDSDynamicDataReader::narrow(
    participant-> lookup_datareader_by_name(
        "MySubscriber::HelloWorldReader"));
```

To process the data, the application installs a *Listener* on the *DataReader*. The `HelloWorldListener`, defined on the same file implements the `DataReaderListener` interface, which the *DataReader* uses to notify the application of relevant events, such as the reception of data.

```
/* Create a DataReaderListener */
HelloWorldListener * reader_listener = new HelloWorldListener();

/* set listener */
retcode = dynamicReader->set_listener(reader_listener, DDS_DATA_AVAILABLE_STATUS);
```

The last part is the implementation of the listener functions. In this case, we only implement the `on_data_available()` operation which is the one called when data is received.

The `on_data_available()` function receives all the data into a sequence and then uses the `DDS_DynamicData::print()` function to print each data item received.

```
void HelloWorldListener::on_data_available(DDSDataReader* reader)
{
    DDSDynamicDataReader * ddDataReader = NULL;
    DDS_DynamicDataSeq dataSeq;
    DDS_SampleInfoSeq infoSeq;
    DDS_ReturnCode_t retcode = DDS_RETCODE_ERROR;
    DDS_Long i = 0;

    ddDataReader = DDSDynamicDataReader::narrow(reader);
    retcode = ddDataReader->take(dataSeq, infoSeq,
        DDS_LENGTH_UNLIMITED, DDS_ANY_SAMPLE_STATE,
        DDS_ANY_VIEW_STATE, DDS_ANY_INSTANCE_STATE);
    printf("on_data_available:%s\n",
        ddDataReader->get_topicdescription()->get_name());
    for (i = 0; i < dataSeq.length(); ++i) {
        if (infoSeq[i].valid_data) {
            retcode = dataSeq[i].print(stdout, 0);
        }
    }
    retcode = ddDataReader->return_loan(dataSeq, infoSeq);
}
```

3.1.6 Subscribing with a Content Filter

To use a content filter, modify the `SubscriptionParticipant` configuration to look like this:

```
<domain_participant_library name="MyParticipantLibrary">
  ...
  <domain_participant name="SubscriptionParticipant"
    domain_ref="MyDomainLibrary::HelloWorldDomain">
    <subscriber name="MySubscriber">
      <data_reader name="HelloWorldReader"
        topic_ref="HelloWorldTopic">
        <datareader_qos
          name="HelloWorld_reader_qos"
          base_name="qosLibrary::DefaultProfile"/>
        <filter name="HelloWorldTopic"
          kind="builtin.sql">
          <expression>count > 2</expression>
        </filter>
      </data_reader>
    </subscriber>
  </domain_participant>
</domain_participant_library>
```

The extra XML within the `<filter>` tag adds a SQL content filter which only accepts samples with the field count greater than two.

Now run `HelloWorld_subscriber` without recompiling and confirm that you see the expected behavior.

3.2 Hello World using XML and Compiled Types

The files for this example are in the directory `<path to examples>/connext_dds/c++/hello_world_xml_compiled`. This simple scenario consists of two applications identical in purpose to the one illustrated in [Figure 3.1: Hello World Domain on page 6](#): `HelloWorld_publisher.exe`, which writes to the *Topic* “HelloWorldTopic,” and `HelloWorld_subscriber.exe`, which subscribes to that same *Topic*.

In contrast with [3.1 Hello World using XML and Dynamic Data on page 5](#), which uses the Dynamic Data API, this example uses compiled types.

Compiled types are syntactically nicer to use from application code and provide better performance. The drawback is that there is an extra step of code-generation involved to create that supporting infrastructure to marshal and unmarshal the types into a format suitable for network communications.

3.2.1 Define the Data Types using IDL or XML

The first step is to describe the data type in a programming language-neutral manner. Two languages are supported by the *Connext DDS* tools: XML and IDL. These languages (XML and IDL) provide equivalent type-definition capabilities, so you can choose either one depending on your personal preference. You can even transform between one and the other with the RTI tools. That said, as the rest of the con-

figuration files use XML, it is often more convenient to also use XML to describe the data types, so they can be shared or moved to other XML configuration files.

The directory `<path to examples>/connext_dds/c++/hello_world_xml_compiled` contains the IDL description of the data type in the file `HelloWorld.idl`.

Let's examine the contents of the IDL file:

```
const long MAX_NAME_LEN = 64;
const long MAX_MSG_LEN = 128;

struct HelloWorld {
    string<MAX_NAME_LEN> sender; //@key
    string<MAX_MSG_LEN> message;
    long count;
};
```

The file defines a structure type called “HelloWorld” consisting of a string (the sender), a string (the message), and an integer count.

If you want to create an XML description of the data type, that XML would look exactly like the type-declaration syntax in the `USER_QOS_PROFILES.xml` file used for the dynamic example ([3.1.3.2 Type Definition on page 10](#)).

3.2.2 Generate Type-Support Code from the Type Definition

This step produces code to support the direct use of the structure ‘HelloWorld’ from application code. The code is generated using the provided tool named `rtiddsgen`.

The Code Generator supports many programming languages. XML-Based Application Creation currently supports C, C++, Java, and C#. We will use C++ in this example.

To generate code, follow these steps (replacing `<architecture>` as needed for your system; e.g., `x64Win64VS2017` or `armv8Linux4gcc7.3.0`):

On a Windows system:

From your command shell, change directory to `<path to examples>\connext_dds\c++\hello_world_xml_compiled` and type:

```
<NDDSHOME>\bin\rtiddsgen -language C++ -example <architecture> HelloWorld.idl
```

On a Linux or macOS system:

From your command shell, change directory to `<path to examples>/connext_dds/c++/hello_world_xml_compiled` and type:

```
<NDDSHOME>/bin/rtiddsgen -language C++ -example <architecture> HelloWorld.idl
```

As a result of this step you will see the following files appear in the directory `hello_world_xml_compiled`: `HelloWorld.h`, `HelloWorld.cxx`, `HelloWorldPlugin.h`, `HelloWorldPlugin.cxx`, `HelloWorldSupport.h`,

and **HelloWorldSupport.cxx**.

The most notable thing at this point is that the **HelloWorld.h** file contains the declaration of the C++ structure, built according to the specification in the XML file:

```
static const DDS_Long MAX_NAME_LEN = 64;
static const DDS_Long MAX_MSG_LEN = 128;

typedef struct HelloWorld
{
    char* sender; /* maximum length = ((MAX_NAME_LEN)) */
    char* message; /* maximum length = ((MAX_MSG_LEN)) */
    DDS_Long count;
} HelloWorld;
```

3.2.3 Build the Application

The example code is provided in C++, C#, and Java. The following instructions describe how to build it on Linux, macOS, and Windows systems. If you will be using an embedded platform, see the [RTI Connext DDS Core Libraries Getting Started Guide Addendum for Embedded Systems](#) for instructions specific to these platforms.

C++ on Windows Systems:

In the Windows Explorer, go to <path to examples>\connext_dds\c++\hello_world_xml_compiled and open the Microsoft Visual Studio solution file for your architecture. For example, the file for Visual Studio 2017 32-bit platforms is **HelloWorld-i86Win32VS2017.sln**. (You have to have already generated code as described in [3.2.2 Generate Type-Support Code from the Type Definition on the previous page](#) in order to see this file.)

The Solution Configuration combo box in the toolbar indicates whether you are building debug or release executables; select **Release**. Select **Build Solution** from the Build menu.

C++ on Linux and macOS systems:

From your command shell, change directory to <path to examples>/connext_dds/c++/hello_world_xml_compiled.

Type:

```
make -f Makefile.<architecture>
```

where <architecture> is one of the supported architectures (e.g., Makefile.armv8Linux4gcc7.3.0). This command will build a *release* executable. To build a *debug* version instead, type:

```
make -f Makefile.<architecture> DEBUG=1
```

3.2.4 Run the Application

The previous step built two executables: **HelloWorld_subscriber** and **HelloWorld_publisher**. These applications should be in proper architecture subdirectory under the **objs** directory (for example, **objs\x64Win64VS2017** in the Windows example cited below and **objs/armv8Linux4gcc7.3.0** in the Linux example).

1. Start the subscribing application:

On a Windows system:

From your command shell, go to **<path to examples>\connect_dds\c++\hello_world_xml_compiled** and type:

```
objs\<architecture>\HelloWorld_subscriber.exe
```

where **<architecture>** is the architecture you just built; see the contents of the **objs** directory to see the name of the architecture you built. For example, the Windows architecture name corresponding to 32-bit Visual Studio 2017 is **i86Win32VS2017**.

On a Linux or macOS system:

From your command shell, change directory to **<path to examples>/connect_dds/c++/hello_world_xml_compiled** and type:

```
objs/<architecture>/HelloWorld_subscriber
```

where **<architecture>** is the architecture you just built of the supported architectures; examine the contents of the **objs** directory to see the name of the architecture you built.

2. Start the publishing application:

On a Windows system:

From your command shell, go to **<path to examples>\connect_dds\c++\hello_world_xml_compiled** and type:

```
objs\<architecture>\HelloWorld_publisher.exe
```

where **<architecture>** is the architecture you just built; see the contents of the **objs** directory to see the name of the architecture you built.

On a Linux or macOS system:

From your command shell, change directory to **<path to examples>/connect_dds/c++/hello_world_xml_compiled** and type:

```
objs/<architecture>/HelloWorld_publisher
```

You should immediately see some messages on the publishing application showing that it is writing data and messages in the subscribing application indicating the data it receives. Do not worry about the contents of the messages. They are generated automatically for this example. The important thing is to understand how the application is defined, which will be explained in the following subsections.

3.2.5 Examine the XML Configuration Files Definition

This system is defined in the file **USER_QOS_PROFILES.xml** in the directory **<path to examples>/-connex_t_dds/c++/hello_world_xml_compiled**. Let's look at its content and what are the elements defined to construct this scenario.

```
<?xml version="1.0"?>
<dds version="6.1.2"
xsi:noNamespaceSchemaLocation=
"http://community.rti.com/schema/current/rti_dds_profiles.xsd"
xmlns:xsi="http://www.w3.org/2001/XMLSchema-instance">

<!-- Qos Library -->
<qos_library name="qosLibrary">
  <qos_profile name="DefaultProfile"> </qos_profile>
</qos_library>

<!-- Domain Library -->
<domain_library name="MyDomainLibrary">
  <domain name="HelloWorldDomain" domain_id="0">
    <register_type name="HelloWorldType"/>
    <topic name="HelloWorldTopic" register_type_ref="HelloWorldType">
      <topic_qos name="HelloWorld_qos"
        base_name="qosLibrary::DefaultProfile"/>
    </topic>
  </domain>
</domain_library>

<!-- Participant library -->
<domain_participant_library name="MyParticipantLibrary">
  <domain_participant name="PublicationParticipant"
    domain_ref="MyDomainLibrary::HelloWorldDomain">
    <publisher name="MyPublisher">
      <data_writer name="HelloWorldWriter"
        topic_ref="HelloWorldTopic"/>
    </publisher>
  </domain_participant>
  <domain_participant name="SubscriptionParticipant"
    domain_ref="MyDomainLibrary::HelloWorldDomain">
    <subscriber name="MySubscriber">
      <data_reader name="HelloWorldReader"
        topic_ref="HelloWorldTopic">
        <datareader_qos
          name="HelloWorld_reader_qos"
          base_name="qosLibrary::DefaultProfile"/>
      </data_reader>
    </subscriber>
  </domain_participant>
</domain_participant_library>
```



```
</domain_participant_library>
</dds>
```

Notice that this file contains virtually the same information found in the **hello_world_xml_dynamic** example. This is no surprise, since we are essentially trying to define the same system. Please see [3.1.3 Examine the XML Configuration Files Definition on page 8](#) for a description of what each section in the XML does.

There are only two differences in the configuration file for the **hello_world_xml_compiled** compared to **hello_world_xml_dynamic**:

- The type definition “<types>” section does not appear in the configuration of the **HelloWorld_xml_compiled** example.

The type-definition section that appears between the tags “<types>” and “</types>” is not there because in this case the data types are compiled in. So the type-definition has been moved to an external file to facilitate the code generation described in [3.2.2 Generate Type-Support Code from the Type Definition on page 17](#).

- The registration of the data-type inside the domain uses the syntax:

```
<register_type name="HelloWorldType" />
```

This contrasts with what was used in the HelloWorld_xml_dynamic example:

```
<register_type name="HelloWorldType" type_ref="HelloWorld" />.
```

The difference between the two is easily observable from the type registration mechanism in XML-Application Creation, which is as follows:

1. If a <register_type> tag is not present, the value of the attribute **register_type_ref** of a `{{<topic>}}` is used as registered type name of a type support that must have been already registered by the application.
2. If a <register_type> tag is specified but its attribute **type_ref** is not present, this is equivalent to 1, but the registered type name is the one specified by the <register_type> tag.
3. If a <register_type> tag is specified and the **type_ref** is present, XML-Application Creation will first search for a type support already registered. If no type support is found, it will automatically register the type using DynamicData and with the TypeCode defined by the XML type referenced by type_ref.

This behavior enables the possibility of defining configurations that are independent of how the types are registered, leaving that decision up to the end application. That is, the same configuration can be used for applications that generate a type or that rely on DynamicData.

3.2.6 Examine the Publisher Application

Open the file `<path to examples>/connext_dds/c++/hello_world_xml_compiled/HelloWorld_publisher.cxx` and look at the source code.

The logic of this simple application is contained in the `publisher_main()` function. The logic can be seen as composed of three parts:

- Type registration (this step is new compared to `HelloWorld_xml_dynamic`)

The first thing the application does is register the data-types that were defined in the code-generation step. This is accomplished by calling the `register_type_support()` function on the `DomainParticipantFactory`.

```
/* type registration */
retcode = DDSTheParticipantFactory->register_type_support(
    HelloWorldTypeSupport::register_type, "HelloWorldType");
```

The function `register_type_support()` must be called for each code-generated data type that will be associated with the *Topics* published and subscribed to by the application. In this example, there is only one *Topic* and one data type, so only one call to this function is required.

The function `register_type_support()` takes as a parameter the `TypeSupport` function that defines the data type in the compiled code. In this case, it is `HelloWorldTypeSupport::register_type()`, which is declared in `HelloWorldSupport.h`. However, you cannot see it directly because it is defined using macros. Instead you will find the line:

```
DDS_TYPESUPPORT_CPP(HelloWorldTypeSupport, HelloWorld);
```

This line defines the `HelloWorldTypeSupport::register_type()` function.

In general, if you include multiple data-type definitions in a single XML (or IDL) file called `MyFile.xml` (or `MyFile.idl`), you will have multiple `TypeSupport` types defined within the generated file `MyFileTypeSupport.h`. You can identify them searching for the `DDS_TYPESUPPORT_CPP()` macro and you should register each of them (the ones the application uses) using the operation `register_type_support()` as was shown above.

- Entity creation

The steps to create the entities are the same as for the `HelloWorld_xml_dynamic` example. The application first creates a *DomainParticipant* using the function `create_participant_from_config()`, which takes the configuration name of the participant “`MyParticipantLibrary::PublicationParticipant`” (which is the same name that was specified in the XML file). Note that the name in the XML file “`PublicationParticipant`” has been qualified with the name of the library it belongs to: “`MyParticipantLibrary`”.

```
DDSDomainParticipant * participant =
    DDSTheParticipantFactory->create_participant_from_config(
```

```
"MyParticipantLibrary::PublicationParticipant");
```

This single function call registers all the necessary data types and creates the *Topics* and *Entities* that were specified in the XML file. In this simple case, the participant only contains a *Publisher* “MyPublisher” with a single *DataWriter* “HelloDataWriter”. However in more realistic scenarios, this single call can create hundreds of entities (both readers and writers).

- Use of the Entities

The remaining part of the function uses the entities that were created to perform the logic of the program.

This example only needs to write data using the single *DataWriter*. So the application looks-up the “HelloWorldWriter” *DataWriter* using the fully qualified name “MyPublisher::HelloWorldWriter” and narrows it to be a HelloWorldDataWriter. Note the difference with the HelloWorld_xml_dynamic example. Rather than the generic “DynamicDataWriter” used in that example, here we use a *DataWriter* specific to the HelloWorld data type.

```
HelloWorldDataWriter * helloWorldWriter = HelloWorldDataWriter::narrow(
    participant->lookup_datawriter_by_name(
        "MyPublisher::HelloWorldWriter"));
/* Create data */
HelloWorld * helloWorldData = HelloWorldTypeSupport::create_data();

/* Main loop */
for (count=0; (sample_count == 0) || (count < sample_count); ++count)
{
    printf("Writing HelloWorld, count: %d\n", count);

    /* Set the data fields */
    helloWorldData->sender = "John Smith";
    helloWorldData->message = "Hello World!";
    helloWorldData->count = count;
    retcode = helloWorldWriter->write(*helloWorldData,
        DDS_HANDLE_NIL);

    if (retcode != DDS_RETCODE_OK) {
        printf("write error %d\n", retcode);
        publisher_shutdown(participant);
        return -1;
    }
    NDDSUtility::sleep(send_period);
}
```

Note that the data-object helloWorldData can be manipulated directly as a plain-language object. Then to set a field in the object, the application can refer to it directly. For example:

```
helloWorldData->count = count;
```

This “plain language object” API is both higher performance and friendlier to the programmer than the DynamicData API.

3.2.7 Examine the Subscriber Application

Open the file `<path to examples>/connext_dds/c++/hello_world_xml_compiled/HelloWorld_subscriber.cxx` and look at the source code.

The logic of this simple application is in the `subscriber_main()` function. Similar to the publisher application the logic can be seen as composed of three parts:

1. Type registration (this step is new compared to `HelloWorld_xml_dynamic`)

This step is identical to the one for the publisher application. The first thing the application does is register the data types that were defined in the code-generation step. This is accomplished calling the `register_type_support()` function on the `DomainParticipantFactory`.

```
/* type registration */
retcode = DDSTheParticipantFactory->register_type_support(
    HelloWorldTypeSupport::register_type, "HelloWorldType");
```

Please refer to the explanation of the publishing application for more details on this step, regardless of whether the application uses a type to publish or subscribe.

2. Entity creation

The steps for creating the entities are the same as for the `HelloWorld_xml_dynamic` example. The application first creates a *DomainParticipant* using the function `create_participant_from_config()` this function takes the configuration name of the participant “`MyParticipantLibrary::SubscriptionParticipant`” which is the same name that was specified in the XML file. Note that the name in the XML file “`SubscriptionParticipant`” has been qualified with the name of the library it belongs to: “`MyParticipantLibrary`”.

```
DDSDomainParticipant * participant =
    DDSTheParticipantFactory->create_participant_from_config(
        "MyParticipantLibrary::SubscriptionParticipant");
```

This single function call registers all the necessary data types, and creates the *Topics* and *Entities* that were specified in the XML file. In this simple case, the participant only contains a *Subscriber* “`MySubscriber`” with a single *DataReader* “`HelloDataReader`”. However in more realistic scenarios, this single call can create hundreds of entities (both *DataReaders* and *DataWriters*).

3. Use of the Entities

The remaining part of the function uses the created entities to perform the logic of the program.

This example only needs to read data using the single *DataReader*. So the application looks-up the “HelloWorldReader” *DataReader* using the fully qualified name “MyPublisher::HelloWorldReader” and narrows it to be a HelloWorldDataReader:

```
HelloWorldDataReader * helloWorldReader =
    HelloWorldDataReader::narrow(
        participant->lookup_datareader_by_name(
            "MySubscriber::HelloWorldReader"));
```

To process the data, the application installs a Listener on the *DataReader*. The HelloWorldListener defined in the same file implements the DataReaderListener interface. The *DataReader* uses that interface to notify the application of relevant events, such as the reception of data.

```
/* Create a data reader listener */
HelloWorldListener *reader_listener = new HelloWorldListener();

/* set listener */
retcode = helloWorldReader->set_listener(reader_listener,
    DDS_DATA_AVAILABLE_STATUS);
```

The last part is the implementation of the listener functions. In this case, we only implement the **on_data_available()** operation, which is called when data is received.

The **on_data_available()** function receives all the data into a sequence, then uses the **HelloWorldTypeSupport::print()** function to print each data item received.

```
void HelloWorldListener::on_data_available(DDSDataReader* reader)
{
    HelloWorldDataReader *helloWorldReader = NULL;
    HelloWorldSeq dataSeq;
    DDS_SampleInfoSeq infoSeq;
    DDS_ReturnCode_t retcode = DDS_RETCODE_ERROR;
    DDS_Long i = 0;

    helloWorldReader = HelloWorldDataReader::narrow(reader);

    retcode = helloWorldReader->take(dataSeq, infoSeq,
        DDS_LENGTH_UNLIMITED, DDS_ANY_SAMPLE_STATE,
        DDS_ANY_VIEW_STATE, DDS_ANY_INSTANCE_STATE);

    for (i = 0; i < dataSeq.length(); ++i)
    {
        if (infoSeq[i].valid_data) {
            HelloWorldTypeSupport::print_data(&dataSeq[i]);
        }
    }
    retcode = helloWorldReader->return_loan(dataSeq, infoSeq);
}
```

Note that the sequence received is of type HelloWorldSeq which contains the native plain language objects of type HelloWorld. This can be manipulated directly by the application. For example the fields can be dereferenced as shown in the code snippet below:

```
HelloWorld *helloWorldData = &dataSeq[i];  
printf("count= %s\n", helloWorldData->count);
```

Chapter 4 Using Prototyper

RTI Prototyper is a companion tool for use with the XML-Based Application Creation feature. This tool allows application developers to quickly try out scenarios directly from their XML descriptions, without writing any code.

On a Windows system:

From your command shell, go to `<path to examples>\connext_dds\c++\hello_world_xml_dynamic`. Open two console windows.

In one window, type (all on one line):

```
%NDDSHOME%\bin\rtiddsprototyper -cfgName "MyParticipantLibrary::PublicationParticipant"
```

In the other window, type (all on one line):

```
%NDDSHOME%\bin\rtiddsprototyper -cfgName "MyParticipantLibrary::SubscriptionParticipant"
```

On a Linux or macOS system:

From your command shell, go to `<path to examples>/connext_dds/c++/hello_world_xml_dynamic`. Open two console windows.

In one window, type (all on one line):

```
${NDDSHOME}/bin/rtiddsprototyper -cfgName "MyParticipantLibrary::PublicationParticipant"
```

In the other window, type (all on one line):

```
${NDDSHOME}/bin/rtiddsprototyper -cfgName  
"MyParticipantLibrary::SubscriptionParticipant"
```

You can run both of these on the same computer or on separate computers within the same (multicast enabled) network. You should immediately see the subscribing application receive and print the information from the publishing side.

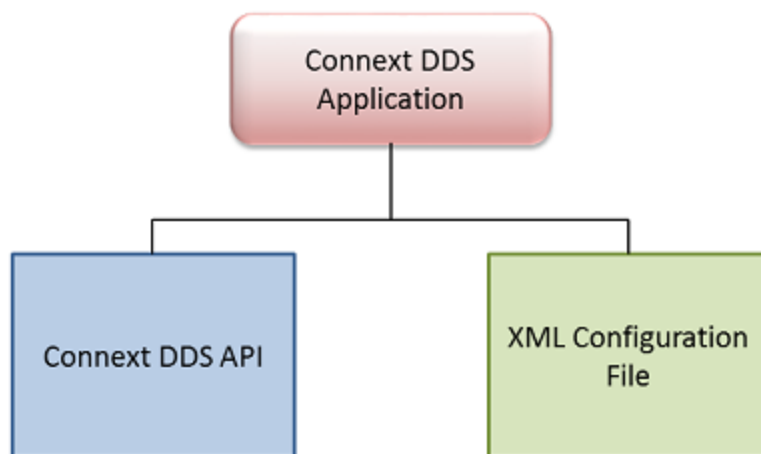
For more information, please read the [RTI Connext DDS Core Libraries Prototyper with Lua Getting Started Guide](#).

Chapter 5 Understanding XML-Based Application Creation

Figure 5.1: Using Both Connext API and XML Configuration File to Develop an Application below depicts a *Connext DDS* application built with the aid of both the *Connext DDS* API and an XML configuration file. Using the XML configuration file in combination with the XML-Based Application Creation feature simplifies and accelerates application development.

The Entities defined in the XML configuration file can be created by a single call to the API. Once created, all Entities can be retrieved from application code using standard “lookup” operations so they can be used to read and write data.

Figure 5.1: Using Both Connext API and XML Configuration File to Develop an Application



5.1 Important Points

- Applications can instantiate a *DomainParticipant* from a participant configuration described in the XML configuration file. All the *Entities* defined by such a participant configuration are created automatically as part of *DomainParticipant* creation. In addition, multiple participant configurations may be defined within a single XML configuration file.
- All the *Entities* created from a participant configuration are automatically assigned an entity name. *Entities* can be retrieved via “lookup” operations by specifying their name. Each *Entity* stores its own name in the QoS policies of the *Entity* so that it can be retrieved locally (via a lookup) and communicated via discovery. This is described in [5.7 Creating and Retrieving Entities Configured in an XML File on page 47](#).
- An XML configuration file is not tied to the application that uses it. Different applications may run using the same configuration file. A single file may define multiple participant configurations. A single application can instantiate as many *DomainParticipants* as desired.
- Changes in the XML configuration file do not require recompilation, even if *Entities* are added or removed, unless the logic that uses the *Entities* also needs to change.

5.2 Loading XML Configuration Files

Connex DDS loads its XML configuration from multiple locations. This section presents the various approaches, listed in load order.

The following locations contain QoS Profiles (see *Configuring QoS with XML*, in the [RTI Connex DDS Core Libraries User's Manual](#)) and may also contain *Entity* configurations.

- **\$NDDSHOME/resource/xml/NDDS_QOS_PROFILES.xml**

This file contains the *Connex DDS* default QoS values; it is loaded automatically if it exists. When present this is the first file loaded. (Where *x.y* represent version numbers.)

This file is loaded automatically if it exists (not the default case) and `ignore_resource_profile` in the `PROFILE QosPolicy` is `FALSE` (the default). **NDDS_QOS_PROFILES.xml does not exist by default.** However, `NDDS_QOS_PROFILES.example.xml` is shipped with the host bundle of the product; you can copy it to `NDDS_QOS_PROFILES.xml` and modify it for your own use. The file contains the default QoS values that will be used for all entity kinds. (First to be loaded)

- File specified in `NDDS_QOS_PROFILES` Environment Variable

The files (or XML strings) separated by semicolons referenced in this environment variable, if any, are loaded automatically. These files are loaded after the **NDDS_QOS_PROFILES.xml** and they are loaded in the order they appear listed in the environment variable.

- **<working directory>/USER_QOS_PROFILES.xml**

This file is loaded automatically if it exists in the ‘working directory’ of the application, that is, the directory from which the application is run. (Last to be loaded)

5.3 XML Syntax and Validation

The configuration files use XML format. Please see [3.1.3 Examine the XML Configuration Files Definition on page 8](#) for an example XML file and a description of its contents.

5.3.1 Validation at Run Time

Connex DDS validates the input XML files using a built-in Document Type Definition (DTD). You can find a copy of the built-in DTD in `$NDDSHOME/resource/schema/rti_dds_profiles.dtd`.

This is only a copy of the DTD that *Connex* DDS uses. Changing this file has no effect unless you specify its path with the DOCTYPE tag, described below.

You can overwrite the built-in DTD by using the XML tag, `<!DOCTYPE>`. For example, the following indicates that *Connex* DDS must use a different DTD file to perform validation:

```
<!DOCTYPE dds SYSTEM
"/local/usr/rti/dds/modified_rti_dds_profiles.dtd">
```

If you do not specify the DOCTYPE tag in the XML file, the built-in DTD is used. The DTD path can be absolute or relative to the application's current working directory.

5.3.2 Validation during Editing

Connex DDS provides DTD and XSD files that describe the format of the XML content. We highly recommend including a reference to the XSD in the XML file. This provides helpful features in code editors such as Visual Studio, Eclipse®, or NetBeans™, including validation and auto-completion while you are editing the XML file.

To include a reference to the XSD file, use the `xmlns:xsi:noNamespaceSchemaLocation` attribute inside the opening `<dds>` tag to reference its location online, as illustrated below:

```
<?xml version="1.0" encoding="UTF-8"?>
<dds version="6.1.2"
xmlns:xsi:noNamespaceSchemaLocation=
"http://community.rti.com/schema/current/rti_dds_profiles.xsd"
xmlns:xsi="http://www.w3.org/2001/XMLSchema-instance">
```

If you want to use the DTD for syntax validation instead of the XSD, use the `<!DOCTYPE>` tag. Note, however, that this validation is less strict and will offer far less help in terms of auto-completion. The use of `<!DOCTYPE>` is shown below, using its online location.

```
<?xml version="1.0" encoding="UTF-8"?>
<!DOCTYPE dds SYSTEM "http://community.rti.com/schema/current/rti_dds_profiles.dtd">
<dds>
```

```
...
</dds>
```

Alternatively, you can reference the XSD file locally, as follows, replacing ‘6.x.y’ with the current version number and replacing <NDDSHOME> as described in [Chapter 2 Paths Mentioned in Documentation on page 3](#):

```
<?xml version="1.0" encoding="UTF-8"?>
<dds xmlns:xsi="http://www.w3.org/2001/XMLSchema-instance"
  xsi:noNamespaceSchemaLocation=
  "<NDDSHOME>/resource/schema/rti_dds_profiles.xsd"
  version="6.x.y">
```

To reference the DTD file locally, do the following, replacing \$NDDSHOME with your *Connex* DDS installation directory:

```
<?xml version="1.0" encoding="UTF-8"?>
<!DOCTYPE dds SYSTEM $NDDSHOME/resource/schema/rti_dds_profiles.dtd">
<dds>
  ...
</dds>
```

You may use relative or absolute paths to the schema files. These files are provided as part of your distribution in the following location (replace <NDDSHOME> as described in [Chapter 2 Paths Mentioned in Documentation on page 3](#)):

- <NDDSHOME>/resource/schema/rti_dds_profiles.xsd
- <NDDSHOME>/resource/schema/rti_dds_profiles.dtd

5.4 Accessing Entities Defined in XML Configuration from an Application

You can use the operations listed in [Table 5.1 Operations Intended for Use with XML-Based Configuration](#) to retrieve and then use the *Entities* defined in your XML configuration files.

Table 5.1 Operations Intended for Use with XML-Based Configuration

Working with...	Configuration-Related Operations	Reference
DomainParticipantFactory	create_participant_from_config create_participant_from_config_w_params lookup_participant_by_name	5.7.1 Creating and Retrieving a DomainParticipant Configured in an XML File on page 47
	register_type_support	5.7.5 Using User-Generated Types on page 50

Table 5.1 Operations Intended for Use with XML-Based Configuration

Working with...	Configuration-Related Operations	Reference
DomainParticipant	lookup_publisher_by_name lookup_subscriber_by_name lookup_datawriter_by_name lookup_datareader_by_name	5.7.2 Creating and Retrieving Publishers and Subscribers on page 48
Publisher	lookup_datawriter_by_name	5.7.3 Creating and Retrieving DataWriters and DataReaders on page 49
Subscriber	lookup_datareader_by_name	

5.5 XML Tags for Configuring Entities

There are two top-level tags to configure Entities in the XML configuration files:

- **<domain_library>**: Defines a collection of domains. A domain defines a global data-space where applications can publish and subscribe to data by referring to the same *Topic* name. Each domain within the domain library defines the *Topics* and associated data-types that can be used within that domain. Note that this list is not necessarily exhaustive. The participants defined within the **<domain_participant_library>** might add *Topics* beyond the ones listed in the domain library.
- **<domain_participant_library>**: Defines a collection of *DomainParticipants*. A *DomainParticipant* provides the means for an application to join a domain. The *DomainParticipant* contains all the Entities needed to publish and subscribe data in the domain (*Publishers*, *Subscribers*, *DataWriters*, *DataReaders*, etc.).

[Figure 5.2: Top-Level Tags in Configuration File on the next page](#) and [Table 5.2 Top-Level Tags in Configuration File](#) describe the top-level tags that are allowed within the root `<dds>` tag.

Figure 5.2: Top-Level Tags in Configuration File

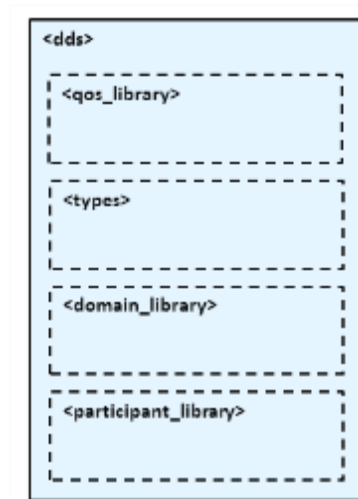


Table 5.2 Top-Level Tags in Configuration File

Tags within <dds>	Description	Number of Tags Allowed
<domain_library>	Specifies a domain library. Set of <domain> definitions. Attributes:	0 or more
	name	
<domain_participant_library>	Specifies a participant library. Set of <domain_participant> definitions.	0 or more
	name	
<qos_library>	Specifies a QoS library and profiles. The contents of this tag are specified in the same manner as for a <i>Connex DDS QoS</i> profile file—see <i>Configuring QoS with XML</i> , in the RTI Connex DDS Core Libraries User's Manual .	0 or more
<types>	Defines types that can be used for dynamic data registered types. See <i>Creating User Data Types with Extensible Markup Language (XML)</i> , in the <i>Data Types and DDS Data Samples</i> chapter of the RTI Connex DDS Core Libraries User's Manual .	0 or 1

5.5.1 Domain Library

A domain library provides a way to organize a set of domains that belong to the same system. A domain represents a data space where data can be shared by means of reading and writing the same *Topics*, each *Topic* having an associated data-type. Therefore, in a <domain> tag you can specify *Topics* and their data types.

Figure 5.3: Domain Library Tag

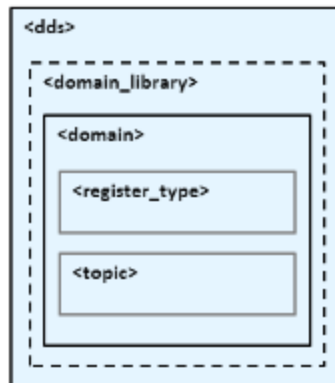


Figure 5.3: Domain Library Tag above, Table 5.3 Domain Library Tags, and Table 5.4 Domain Tags describe what tags can be in a `<domain_library>`.

- The `<register_type>` tag specifies a type definition that will be registered in the *DomainParticipants* whenever they specify a *Topic* associated with that data type.
- The `<topic>` tag specifies a *Topic* by associating it with a `<register_type>` that contains the type information.

In a domain, you can also specify the domain ID to which the *DomainParticipant* associated with this domain will be bound.

Table 5.3 Domain Library Tags

Tags within <code><domain_library></code>	Description	Number of Tags allowed	
<code><domain></code>	Specifies a domain. Attributes:	1 or more	
	<code>name</code>		Domain name
	<code>domain_id</code> (<i>optional</i>)		Domain ID (default id=0)
	<code>base_name</code> (<i>optional</i>)		Base domain name. Specifies another domain from which properties will be inherited.

Table 5.4 Domain Tags

Tags within <domain>	Description		Number of Tags allowed
<register_type>	<p>Specifies the kind of data type to be registered. These are as follows:</p> <p>builtin.string (see String Built-in Type, in the <i>Built-in Data Types</i> chapter of the RTI Connex DDS Core Libraries User's Manual)</p> <p>builtin.keyedString (see <i>Keyed String Built-in Type</i>, in the <i>Built-in Data Types</i> chapter of the RTI Connex DDS Core Libraries User's Manual)</p> <p>builtin.octets (see Octets Built-in Type, in the <i>Built-in Data Types</i> chapter of the RTI Connex DDS Core Libraries User's Manual)</p> <p>builtin.keyedOctets (see <i>Keyed Octets Built-in Type</i>, in the <i>Built-in Data Types</i> chapter of the RTI Connex DDS Core Libraries User's Manual)</p> <p>dynamicData Data type is defined within the <types> tag.</p> <p>userGenerated Data is defined by the type support code created by the code generator, <i>rtiddsgen</i>.</p> <p>Attributes:</p>		1 or more
	name	Name used to refer to this registered type within the XML file. This is also the name under which the type is registered with the <i>DomainParticipants</i> unless overridden by the <registered_name> tag.	
	type_ref (<i>optional</i>)	Reference (fully qualified name) to a defined type within <types>. Indicates to use DynamicData if a type is not registered at participant creation time.	
<topic>	<p>Specifies a topic associating its data-type and optionally QoS.</p> <p>Attributes:</p>		1 or more
	name	Name of the topic if no <registered_name> is specified.	
	register_type_ref	<p>Name of a registered type support or reference (name) to a register_type within this domain with which this topic is associated. A built-in registered type can be specified by using one of these special values:</p> <ul style="list-style-type: none"> • DDS::String • DDS::KeyedString • DDS::Octets • DDS::KeyedOctets 	

Note that a domain may inherit from another “base domain” definition by using the **base_name** attribute. A domain that declares a “base domain” might still override some of the properties in the base domain. Overriding is done simply by including elements in the derived domain with the same name as in the base domain.

The <register_type> tag, described in [Figure 5.4: Register Type Tag on the next page](#) and [Table 5.5 Register Type Tag](#), determines how a type is registered by specifying the type definition and the name with which it is registered.

Figure 5.4: Register Type Tag

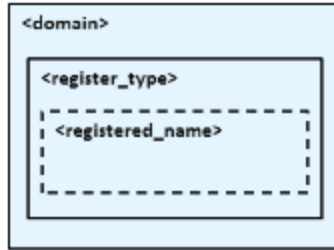


Table 5.5 Register Type Tag

Tags within <register_type>	Description	Number of tags allowed
<registered_name>	Name with which the type is registered.	0 or 1

The <topic> tag, described in [Figure 5.5: Topic Tag below](#) and [Table 5.6 Topic Tag](#), describes a *Topic* by specifying the name and type of the *Topic*. It may also contain the QoS configuration for that *Topic*.

Figure 5.5: Topic Tag

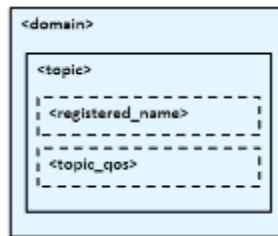


Table 5.6 Topic Tag

Tags within <topic >	Description	Number of tags allowed
<registered_name>	Name of the <i>Topic</i> .	0 or 1
<topic_qos>	<i>Topic</i> QoS configuration.	0 or 1

Some elements may refer to already specified types and QoS tags. The definitions of these referenced tags may appear either in the same configuration file or in a different one—as long as it is one of the ones loaded by *Connex DDS* as described in [5.2 Loading XML Configuration Files on page 29](#).

If a QoS is not specified for an Entity, then the QoS will be set to a default value that is either the default configured in the XML files, or if such default does not exist, then the *Connex DDS* QoS defaults. Please see *Configuring QoS with XML*, in the [RTI Connex DDS Core Libraries User's Manual](#) for more details.

For example:

```
<!-- types -->
<types>
  <struct name="MyType">
    <member name="message" type="string"/>
    <member name="count" type="int32"/>
  </struct>
</types>

<!-- Domain Library -->
<domain_library name="MyDomainLibrary" >
  <domain name="MyDomain" domain_id="10">
    <register_type name="MyRegisteredType"
      type_ref="MyType"/>
    <topic name="MyTopic" register_type_ref="MyRegisteredType">
      <topic_qos base_name="qosLibrary::DefaultProfile"/>
    </topic>
  </domain>
</domain_library>
```

The above configuration defines a domain with name “MyDomain” and domain_id “10” containing a *Topic* called “MyTopic” with type “MyType” registered with the name “MyRegisteredType”:

- `<register_type>` defines the registration of a dynamic data type with name “MyRegisteredType” and definition “MyType”—defined in the same file.
- `<topic>` with name “MyTopic” and whose corresponding type is the one defined above with the name “MyRegisteredType” found within the same configuration. The *Topic* QoS configuration is the one defined by the profile “qosLibrary::DefaultProfile”, which is defined in a different file.

Note that the *DomainParticipant* created from a configuration profile bound to this domain will be created with **domain_id=10**, unless the **domain_id** is overridden in the participant configuration.

5.5.2 Participant Library

A participant library provides a way to organize a set of participants belonging to the same system. A participant configuration specifies all the entities that a *DomainParticipant* created from this configuration will contain.

Figure 5.6: Participant Library Tag



Figure 5.6: Participant Library Tag above, Table 5.7 Participant Library Tag, and Table 5.8 Domain Participant Tag show the description of a `<domain_participant_library>` and the tags it contains.

A `<domain_participant>` can be associated with a domain where topics and their associated types are already defined. The elements `<register_type>` and `<topic>` may also be defined in a `<domain_participant>`—the same way it is done in a `<domain>`. This makes it possible to add *Topics*, data-types, etc. beyond the ones defined in the domain, or alternatively redefine the elements that are already in the `<domain>`.

A `<domain_participant>` is defined by specifying the set of *Entities* it contains. This is done using tags such as `<publisher>`, `<subscriber>`, `<data_writer>` and `<data_reader>`, which specify an *Entity* of their corresponding type. These *Entities* are created within the *DomainParticipant* instantiated from the configuration profile that contains the definitions.

Table 5.7 Participant Library Tag

Tags within <domain_participant_library>	Description	Number of Tags Allowed	
<domain_participant>	Specifies a participant configuration. Attributes:	1 or more	
	name		Participant configuration name.
	base_name (optional)		Base participant name. It specifies another participant from which to inherit the configuration.
	domain_ref (optional)		Reference (fully qualified name) to a defined <domain> in the domain library.
	domain_id (optional)		Domain ID. If specified, overrides the id in the domain it refers to. If no domain_id is specified directly or in the referenced domain then the default domain_id is 0.

A <domain_participant> may inherit its configuration from another “base participant” specified using the **base_name** attribute. In this case, overriding applies to the base <domain_participant> as well as to the referred <domain>.

Note that in *DataWriters* always belong to a *Publisher* and *DataReaders* to a *Subscriber*. For this reason the <data_writer> and <data_reader> typically appear nested inside the corresponding <publisher> and <subscriber> tags. However, for convenience, it is possible to define <data_writer> and <data_reader> tags directly under the <domain_participant> tag. In this case, the *DataWriters* and *DataReaders* are created inside the implicit *Publisher* and *Subscriber*, respectively.

Table 5.8 Domain Participant Tag

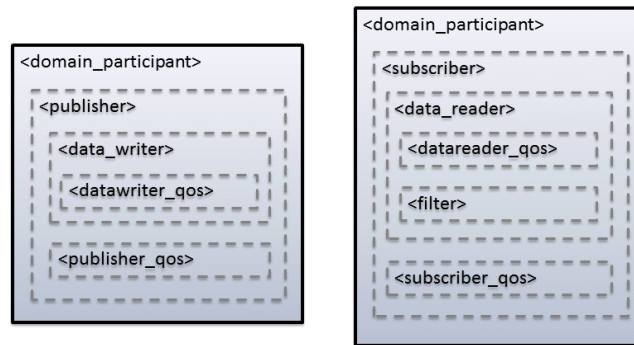
Tags within <domain_participant>	Description	Number of Tags Allowed		
<memory_management>	<p>Configures certain aspects of how <i>Connex DDS</i> allocates internal memory. The configuration is per <i>DomainParticipant</i> and therefore affects all the contained <i>DataReaders</i> and <i>DataWriters</i>. For example:</p> <pre data-bbox="324 567 755 808"><domain_participant name="test"> <memory_management> <sample_buffer_min_size> x </sample_buffer_min_size> <sample_buffer_trim_to_size> true </sample_buffer_trim_to_size> </memory_management> ...</pre> <p>The <memory_management> tag can include the following tags:</p> <p>sample_buffer_min_size: For all <i>DataReaders</i> and <i>DataWriters</i>, the way <i>Connex DDS</i> allocates memory for samples is as follows: <i>Connex DDS</i> pre-allocates space for samples up to size X in the reader and writer queues. If a sample has an actual size greater than X, the memory is allocated dynamically for that sample. The default size is DDS_LENGTH_UNLIMITED (meaning no dynamic memory is used; the maximum sample size is pre-allocated).</p> <p>sample_buffer_trim_to_size: If set to true, after allocating dynamic memory for very large samples, that memory will be released when possible. If false, that memory will not be released but kept for future samples if needed. The default is false.</p> <p>This feature is useful when a data type has a very high maximum size (e.g., megabytes) but most of the samples sent are much smaller than the maximum possible size (e.g., kilobytes). In this case, the memory footprint is dramatically reduced, while still correctly handling the rare cases in which very large samples are published.</p>	0 or more		
<register_type>	Specifies how a type is registered. Same as within the <domain> tag	0 or more		
<topic>	Specifies a topic. Same as within the <domain> tag	0 or more		
<publisher>	<p>Specifies a configuration.</p> <p>Attributes:</p>	0 or more		
	<table border="1" data-bbox="297 1381 1360 1564"> <tr> <td data-bbox="297 1381 828 1444">name</td> <td data-bbox="828 1381 1360 1444"><i>Publisher</i> configuration name.</td> </tr> <tr> <td data-bbox="297 1444 828 1564">multiplicity (optional)</td> <td data-bbox="828 1444 1360 1564">Number of <i>Publishers</i> that are created with this configuration. Default is 1.</td> </tr> </table>		name	<i>Publisher</i> configuration name.
name	<i>Publisher</i> configuration name.			
multiplicity (optional)	Number of <i>Publishers</i> that are created with this configuration. Default is 1.			
<subscriber>	<p>Specifies a <i>Subscriber</i> configuration.</p> <p>Attributes:</p>	0 or more		
	<table border="1" data-bbox="297 1659 1360 1843"> <tr> <td data-bbox="297 1659 828 1722">name</td> <td data-bbox="828 1659 1360 1722"><i>Subscriber</i> configuration name.</td> </tr> <tr> <td data-bbox="297 1722 828 1843">multiplicity (<i>optional</i>)</td> <td data-bbox="828 1722 1360 1843">Number of <i>Subscribers</i> that are created with this configuration. Default is 1.</td> </tr> </table>		name	<i>Subscriber</i> configuration name.
name	<i>Subscriber</i> configuration name.			
multiplicity (<i>optional</i>)	Number of <i>Subscribers</i> that are created with this configuration. Default is 1.			

Table 5.8 Domain Participant Tag

Tags within <domain_participant>	Description		Number of Tags Allowed
<data_writer>	Specifies a <i>DataWriter</i> configuration. The <i>DataWriter</i> will be created inside the implicit <i>Publisher</i> . Attributes:		0 or more
	name	<i>DataWriter</i> configuration name.	
	topic_ref	Reference (name) a <topic> within the <domain> referenced by its <participant> parent.	
	multiplicity (<i>optional</i>)	Number of <i>DataWriters</i> that are created with this configuration. Default is 1.	
<data_reader>	Specifies a data reader configuration. The <i>DataReader</i> will be created inside the implicit subscriber. Attributes:		0 or more
	name	Data reader configuration name.	
	topic_ref	Reference (name) a <topic> within the <domain> referenced by its <participant> parent.	
	multiplicity (<i>optional</i>)	Number of <i>DataReaders</i> that are created with this configuration. Default is 1.	
<domain_participant_qos>	<i>DomainParticipant</i> QoS configuration.		0 or 1

The <publisher>, <subscriber>, <data_writer>, and <data_reader> tags are described in [Figure 5.7: Publisher and Subscriber Tags](#) on the next page, [Table 5.9 Publisher Tag](#), [Table 5.10 Subscriber Tag](#), [Table 5.11 DataWriter Tag](#) and [Table 5.12 DataReader Tags](#).

Figure 5.7: Publisher and Subscriber Tags



The <publisher> tag defines by default a *Publisher*. It may contain a QoS configuration and several *DataWriters*. Likewise, the <subscriber> tag defines by default a *Subscriber*. It may contain a QoS configuration and several *DataReaders*.

Table 5.9 Publisher Tag

Tags within <publisher >	Description	Number of Tags Allowed
<data_writer>	Specifies a <i>DataWriter</i> configuration. Same as within the <participant> tag.	0 or more
<publisher_qos>	<i>Publisher</i> QoS configuration.	0 or 1

Table 5.10 Subscriber Tag

Tags within <subscriber>	Description	Number of Tags Allowed
<data_reader>	Specifies a <i>DataReader</i> configuration. Same as within the <participant> tag.	0 or more
<subscriber_qos>	<i>Subscriber</i> QoS configuration.	0 or 1

Table 5.11 DataWriter Tag

Tags within <data_writer >	Description	Number of Tags Allowed
<datawriter_qos>	<i>DataWriter</i> QoS configuration	0 or 1

Table 5.12 DataReader Tags

Tags within <data_reader>	Description	Number of Tags Allowed	
<datareader_qos>	<i>DataReader</i> QoS configuration.	0 or more	
<filter>	Enables the creation of <i>DataReader</i> with this configuration from a <i>ContentFilteredTopic</i> . Attributes:	0 or 1	
	name		Name of the <i>ContentFilteredTopic</i> . The <i>ContentFilteredTopic</i> will be associated with the same <i>Topic</i> referenced by the containing <data_reader>
	filter_kind		Specifies which <i>ContentFilter</i> to use. It defaults to the builtin.sql filter.

The <filter> tag within a <data_reader> enables content filtering. It causes the corresponding *DataReader* to be created from a *ContentFilteredTopic* with the specified filter characteristics.

The *ContentFilteredTopic* name is generated as follows: **xml_filter_name::xml_topic_name**.

Where **xml_filter_name** is the value of the attribute name of the <filter> tag, and **xml_topic_name** is the value of the attribute name of the referred <topic> tag.

Table 5.13 Filter Tag

Tags within <filter >	Description	Number of Tags Allowed
<expression>	Filter expression	0 or 1
<parameter_list>	List of parameters. Parameters are specified using <param> tags. The maximum number of parameters is 100. <pre> <parameter_list> <param>param_0</param> <param>param_1</param> ... </parameter_list> </pre>	0 or 1

For example:

```

<domain_participant name="MyParticipant"
  domain_ref="MyDomainLibrary::MyDomain">
  <publisher name="MyPublisher">
    <data_writer name="MyWriter" topic_ref="MyTopic"/>
  </publisher>

  <subscriber name="MySubscriber">
    <data_reader name="MyReader" topic_ref="MyTopic">
      <filter name="MyFilter" kind="builtin.sql">

```

```

        <expression> count &gt; %0 </expression>
        <parameter_list>
            <param>10<param>
        </parameter_list>
    </filter>
</data_reader>
</subscriber>
</domain_participant>

```

The above configuration defines a `<domain_participant>` that is bound to the `<domain>` “MyDomain”.

A *DomainParticipant* created from this configuration will contain:

- A *Publisher* which has a *DataWriter* created from the *Topic* “MyTopic”.
- A *Subscriber* which has *DataReader* created from a *ContentFilteredTopic* whose related *Topic*, “MyTopic”, uses a SQL filter. The *ContentFilteredTopic* has the name “MyTopic::MyFilter”.

5.6 Names Assigned to Entities

Each Entity configured in an XML file is given a unique name. This name is used to refer to it from other parts of the XML configuration and also to retrieve it at run-time using the *Connex DDS API*.

In the context of XML-based configuration, we distinguish between two kinds of names:

- **Configuration name:** The name of a specific Entity’s configuration. It is given by the name attribute of the corresponding XML element.
- **Entity name:** The actual name of the Entity within the run-time system. The name assignment follows these rules of precedence:
 1. An explicit name provided as a parameter in `DomainParticipantConfigParams_t` (applies only to a *DomainParticipant*).
 2. An explicit name, obtained from the specified `EntityNameQosPolicy` settings.
 3. A default entity name, obtained from the name attribute of the corresponding configuration.

For example:

```

<domain_participant_library name="MyLibrary">
    <domain_participant name="MyParticipant">
        <publisher name="MyPublisher">
            <data_writer name="MyWriter" topic_ref="MyTopic"/>
            <data_writer name="MyWriter2" topic_ref="MyTopic2">
                <publication_name>
                    <name>WriterNameFromQos</name>
                </publication_name>
            </data_writer>
        </publisher>
    </domain_participant>
</domain_participant_library>

```



```
</domain_participant>
</domain_participant_library>
```

For the above XML configuration, the name assignments are:

Entity	Configuration Name	Entity Name
<i>DomainParticipant</i>	"MyParticipant"	"MyParticipant"
<i>Publisher</i>	"MyPublisher"	"MyPublisher"
<i>DataWriter</i>	"MyWriter"	"MyWriter"
<i>DataWriter</i>	"MyWriter2"	"WriterNameFromQos"

For all the cases, the entity name is stored by *Connex* DDS using the `EntityNameQosPolicy` QoS policy for *DomainParticipants*, *Publishers*, *Subscribers*, *DataWriters* and *DataReaders*. The policy is represented by the following C structure:

```
Struct DDS_EntityNameQosPolicy {
    char * name;
    char * role_name;
}
```

The mapping is:

Field	Value
name	Entity name
role_name	Configuration name

For the above XML example, assuming the entities are created with `create_participant_from_config(configuration)`:

Entity	EntityNameQosPolicy
<i>DomainParticipant</i>	name = "MyParticipant" role_name = "MyParticipant"
<i>Publisher</i>	name = "MyPublisher" role_name = "MyPublisher"
<i>DataWriter</i>	name = "MyWriter" role_name = "MyWriter"
<i>DataWriter</i>	name = "WriterNameFromQos" role_name = "MyWriter2"

5.6.1 Referring to Entities and Other Elements within XML Files

Entities and other elements within the XML file are addressed using a hierarchical name that matches their declaration hierarchy. This is summarized in the table below.

Entity or Element	Hierarchical Name	Example Use
type	[type_name]	type_ref="MyType"
qos	[qos_library_name]::[qos_profile_name]	base_name="qosLibrary::DefaultProfile"
domain	[domain_library_name]::[domain_name]	domain_ref="MyDomainLibrary::MyDomain"
participant	[domain_participant_library_name]:: [participant_name]	base_name="MyParticipantLibrary::PublicationParticipant"
topic	[topic_name] Must be defined within the scope of the Domain or the Participant that refers to it	topic_ref="MyTopic"
publisher	[publisher_name] Must be defined within the scope of the Participant that refers to it	name="MyPublisher"
subscriber	[subscriber_name] Must be defined within the scope of the Participant that refers to it	name="MySubscriber"
data_writer	[publisher_name]::[datawriter_name] If addressing from within the same Publisher, the "publisher_name::" prefix may be omitted	name="MyPublisher::MyWriter" name="MyWriter"
data_reader	[subscriber_name]::[datareader_name] If addressing from within the same Subscriber, the "subscriber_name::" prefix may be omitted	name="MySubscriber::MyReader" name="MyReader"

The example above corresponds to a configuration such as the one following:

```
<dds xmlns:xsi="http://www.w3.org/2001/XMLSchema-instance"
  xsi:noNamespaceSchemaLocation=
    "http://community.rti.com/schema/current/rti_dds_profiles.xsd" version="6.x.y">
  <types>
    <struct name="MyType">
      <member name="mylong" type="int32"/>
    </struct>
  </types>

  <domain_library name="MyDomainLibrary">
    <domain name="MyDomain" domain_id="0">
      <register_type name="MyRegisteredType"
        type_ref="MyType"/>
      <topic name="MyTopic"
        register_type_ref="MyRegisteredType"/>
    </domain>
  </domain_library>
</dds>
```

```

        </domain>
    </domain_library>

    <domain_participant_library name="MyParticipantLibrary">
        <domain_participant name="MyParticipant"
            domain_ref="MyDomainLibrary::MyDomain">
            <publisher name="MyPublisher">
                <data_writer name="MyWriter"
                    topic_ref="MyTopic"/>
            </publisher>
            <subscriber name="MySubscriber">
                <data_reader name="MyReader"
                    topic_ref="MyTopic"/>
            </subscriber>
        </domain_participant>
    </domain_participant_library>
</dds>

```

5.7 Creating and Retrieving Entities Configured in an XML File

There are two kinds of operations that affect *Entities* configured in an XML file:

- Create the defined entities. Only the operation **create_participant_from_config()** in the `DomainParticipantFactory` triggers the creation of a *DomainParticipant* and all its contained *Entities* given a configuration name.
- Retrieve the defined entities: After creation, you can retrieve the defined *Entities* by using the **lookup_by_name()** operations available in the `DomainParticipantFactory`, *DomainParticipant*, *Publisher* and *Subscriber*.

5.7.1 Creating and Retrieving a DomainParticipant Configured in an XML File

To create a *DomainParticipant* from a configuration profile in XML, use the function **create_participant_from_config()**, which receives the configuration name and creates all the entities defined by that configuration.

For example :

```

<domain_participant_library = "MyLibrary">
    <domain_participant name="MyParticipant"
        domain_ref="MyDomainLibrary::MyDomain" domain_id="1">
        ...
    </domain_participant>
</domain_participant_library>

```

Given the above configuration, a *DomainParticipant* is created as follows:

```

DDSDomainParticipant * participant =
    DDSTheParticipantFactory->create_participant_from_config
        ("MyLibrary::MyParticipant");
if (participant == NULL) {

```

```
//handle error
}
```

The *DomainParticipant* is bound to the `domain_id` specified in either the `<domain_participant>` tag—this has precedence—or the `<domain>` tag. In this example the `domain_id` is set to one.

When the *DomainParticipant* is created by means of `create_participant_from_config()`, a name will be generated automatically based on the configuration name and the number of existing participants created from the same configuration. The generation follows the same strategy explained in [5.6 Names Assigned to Entities on page 44](#) for the domain entities where the multiplicity is replaced by the number of existing participants. If this number is identified by "N", the participant name for a new participant will be assigned as follows:

Participant Name	N
"configuration_name"	0
"configuration_name#N"	[1,N-1]

For example, if we create three participants from the configuration "lib::participant", the names assigned as the participants are created will be:

- -participant
- -participant#1
- -participant#2

Once a participant is created, it can be retrieved by its name at any other place in your program as follows, based on the previous example and assuming that only one participant was created:

```
participant =
    DDSTheParticipantFactory->lookup_participant_by_name (
        "MyParticipant");
if (participant == NULL) {
    //handle error
}
```

To provide more flexibility, `create_participant_from_config_w_params()` allows you to specify the participant name. You can also override the specification in the configuration for the domain ID and QoS profile for the participant and entities in the domain.

5.7.2 Creating and Retrieving Publishers and Subscribers

Publishers and *Subscribers* configured in XML are created automatically when a *DomainParticipant* is created from the `<domain_participant>` that contains the `<publisher>` and `<subscriber>` configurations.

Given the following example:

```

<domain_participant name="MyParticipant"
  domain_ref="MyDomainLibrary::MyDomain">
  <publisher name="MyPublisher" multiplicity="2">
    ...
  </publisher>
  <subscriber name="MySubscriber">
    ...
  </subscriber>
</domain_participant>

```

Once a *DomainParticipant* is created as explained in [5.7.1 Creating and Retrieving a DomainParticipant Configured in an XML File on page 47](#), *Publishers* and *Subscribers* can be retrieved from the created *DomainParticipant* using their name as follows:

```

DDS::Publisher * publisher =
    participant->lookup_publisher_by_name("MyPublisher");
if (publisher == NULL) {
    //handle error
}

DDS::Publisher * publisher_1 =
    participant->lookup_publisher_by_name("MyPublisher#1");
if (publisher == NULL) {
    //handle error
}

DDS::Subscriber * subscriber =
    participant->lookup_subscriber_by_name("MySubscriber");
if (subscriber == NULL) {
    //handle error
}

```

5.7.3 Creating and Retrieving DataWriters and DataReaders

DataWriters and *DataReaders* configured in XML are created automatically when a *DomainParticipant* is created from the `<domain_participant>` that contains the `<data_writer>` and `<data_reader>` configurations.

Given the following example:

```

<domain_participant name="MyParticipant"
  domain_ref="MyDomainLibrary::MyDomain">
  <publisher name="MyPublisher">
    <data_writer name="MyWriter" topic_ref="MyTopic"/>
  </publisher>
  <subscriber name="MySubscriber">
    <data_reader name="MyReader" topic_ref="MyTopic"/>
  </subscriber>
</domain_participant>

```

Once a *DomainParticipant* is created as explained in [5.7.1 Creating and Retrieving a DomainParticipant Configured in an XML File on page 47](#), *DataWriters* and *DataReaders* can be retrieved from the created *DomainParticipant* using their fully qualified name seen below:

```

DDSDataWriter * dataWriter =
    participant->lookup_dataWriter_by_name(
        "MyPublisher::MyWriter");
if (dataWriter == NULL) {
    //handle error
}
DDSDataReader * dataReader =
    participant->lookup_dataReader_by_name(
    "MySubscriber::MyReader");
if (dataReader == NULL) {
    //handle error
}

```

Or from the created *Publisher* and *Subscriber*, using their ‘unqualified’ name seen below:

```

DDSDataWriter * dataWriter =
    publisher->lookup_dataWriter_by_name("MyWriter");
if (dataWriter == NULL) {
    //handle error
}
DDSDataReader * dataReader =
    subscriber->lookup_dataReader_by_name("MyReader");

```

5.7.4 Creating Content Filters

To use a content filter, modify the “SubscriptionParticipant” configuration to look like this:

```

<domain_participant_library name="MyParticipantLibrary">
    ...
    <domain_participant name="SubscriptionParticipantWithFilter"
        domain_ref="MyDomainLibrary::HelloWorldDomain">
        <subscriber name="subscriber">
            <data_reader name="HelloWorldReader"
                topic_ref="HelloWorldTopic">
                <datareader_qos name="HelloWorld_reader_qos"
                    base_name="qosLibrary::DefaultProfile"/>
                <filter name="HelloWorldTopic" kind="builtin.sql">
                    <expression> count &lt; 20 </expression>
                </filter>
            </data_reader>
        </subscriber>
    </domain_participant>
</domain_participant_library>

```

It adds a SQL content filter, which only accepts samples with a field count less than 20.

Now run the HelloWorld_subscriber application without recompiling and check that it only receives data where the counter is less than 20.

5.7.5 Using User-Generated Types

If a user-generated type by means of *rtiddsgen* is desired rather than dynamic data, the corresponding type support must be registered with the DomainParticipantFactory before creating a *DomainParticipant*. To register the type support, use the function **register_type_support()** in the DomainParticipantFactory,

which takes (a) a pointer to a function that registers a type and (b) the type name it is registered with. Then the specified function will be called automatically by the middleware whenever the type registration is needed.

The definition of this function is given by:

```
typedef DDS_ReturnCode_t (*DomainParticipantFactory_RegisterTypeFunction)
    (DDSDomainParticipant * participant,
     const char * type_name);
```

This “register type function” should be generated using the *rtiddsgen* command-line tool from the IDL or XML definition of the data type. See [3.2 Hello World using XML and Compiled Types on page 16](#) for a simple example of how to follow this process.

For example, the following XML snippet defines a data type registered under the name **MyType** with a TypeSupport that is user-generated. To use this data type, the application must also generate the TypeSupport code for the appropriate language binding using *rtiddsgen* and associate the generated TypeSupport with the name **MyType**. This association is made by calling the operation **register_type_support()** on the **DomainParticipantFactory**:

```
<domain name="MyDomain" domain_id="13">
  <register_type name="MyType"/>
  ...
</domain>
```

Continuing the example above, assume that the structure of "MyType" is described in the IDL file **MyType.idl**. Also assume that you are using the C++ language API and you have already run *rtiddsgen* and generated the type-support files: **MyTypeSupport.h** and **MyTypeSupport.cxx**. These files will contain the declaration and implementation of the function **MyTypeSupport::register_type()**. In this situation, you must associate the **MyTypeSupport::register_type()** operation with the type name **MyType** by calling **DDSTheParticipantFactory->register_type_support()** from your application code prior to creating the *DomainParticipant* as shown in the C++ snippet below:

```
DDS_ReturnCode_t * retCode =
    DDSTheParticipantFactory->register_type_support(
        FooTypeSupport::register_type, "MyType");
if (retCode != DDS_RETCODE_OK) {
    //handle error
}
```

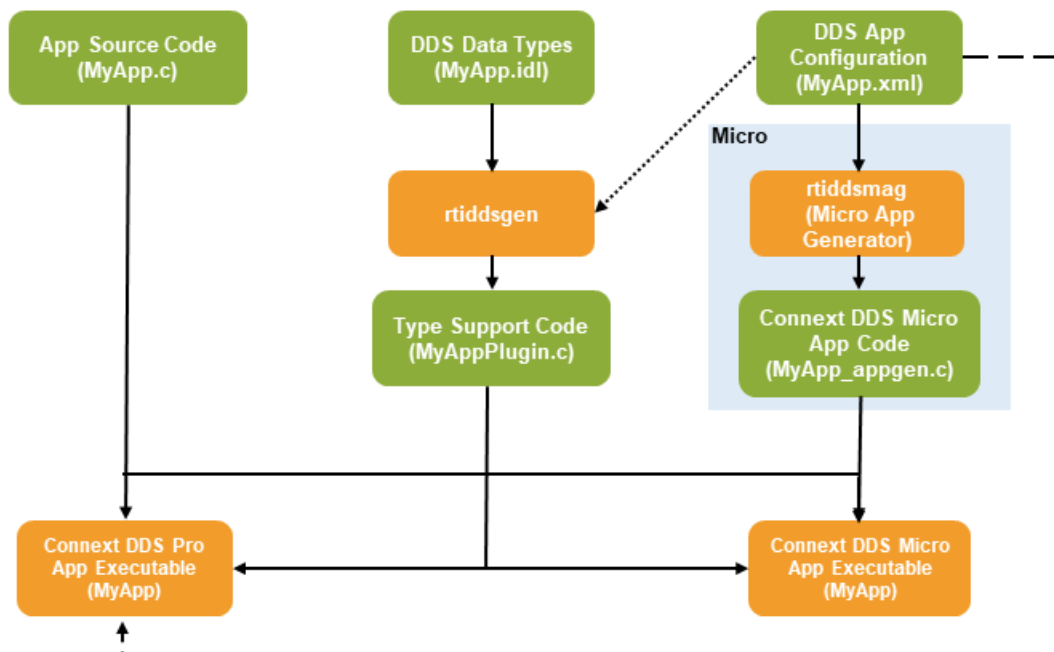
You can find an example of using a user-generated type in `<path to examples>/connext_dds/c++/hello_world_xml_compiled`. Also refer to the description of this example in [3.2 Hello World using XML and Compiled Types on page 16](#).

Chapter 6 Connexx DDS Micro Application Generator

XML-Based Application Creation can also be used to configure *Connexx DDS Micro* applications, through a utility called *RTI Micro Application Generator (MAG)*.

To use MAG, you must have *Connexx DDS Micro* installed.

MAG generates code from an XML configuration file; it creates DDS entities and registers all the components needed for a *Connexx DDS Micro*-based application.



Extending *XML-Based Application Creation* to *Connex DDS Micro* enables two important use cases:

- Users who may eventually develop with *Connex DDS Micro*, but who haven't determined their final platform, can prototype applications on a generic platform and validate that the QoS and DDS Entity configuration is within scope of what *Connex DDS Micro* supports. The same concept applies to those who eventually want to use *Connex DDS* in a safety-critical platform, such as those required by DO-178C for avionics or ISO 26262 for automotive applications.
- Users who want to develop directly with *Connex DDS Micro* can simplify their development efforts through shared XML files that can be configuration managed. This reduces the burden on system integrators who want to configure *Connex DDS Micro* systems without having to manually code in static configurations.

Some of the main features of MAG are:

- Generates code for the languages supported by *Connex DDS Micro*: C and C++.
- Automatically configures the remote entities that are needed to communicate with applications that use static discovery.
- Automatically tries to use the default values used by *Connex DDS Micro*, to reduce the size of the generated code.
- Optimizes the components used by your application. By default, MAG generates code that will unregister transports that your application is not using.

Notes:

- MAG has been tested with OpenJDK JDK 11, which is included in the installation package.
- Customization is not currently supported for MAG.

6.1 Paths Mentioned in Documentation

This chapter may refer to:

- **<RTIMEHOME>**

This refers to the installation directory for *Connex DDS Micro*. The default installation paths are:

- macOS systems:
/Applications/rti_connex_dds-6.1.2/rti_connex_dds_micro-<version>
- Linux systems, non-*root* user:
/home/<your user name>/rti_connex_dds-6.1.2/rti_connex_dds_micro-<version>
- Linux systems, *root* user:
/opt/rti_connex_dds-6.1.2/rti_connex_dds_micro-<version>

- Windows systems, user without Administrator privileges:
`<your home directory>\rti_connex_dds-6.1.2\rti_connex_dds_micro-<version>`
- Windows systems, user with Administrator privileges:
 - 64-bit machines:
`C:\Program Files\rti_connex_dds-6.1.2\rti_connex_dds_micro-<version>`
 - 32-bit machines:
`C:\Program Files (x86)\rti_connex_dds-6.1.2\rti_connex_dds_micro-<version>`

You may also see \$RTIMEHOME or %RTIMEHOME%, which refers to an environment variable set to the installation path.

Wherever you see <RTIMEHOME> used in a path, replace it with your installation path.

Note for Windows Users: When using a command prompt to enter a command that includes the path `C:\Program Files` (or any directory name that has a space), enclose the path in quotation marks. For example:

```
"C:\Program Files\rti_connex_dds-6.1.2\rti_connex_dds_micro-
<version>\rtiddsmag\scripts\rtiddsmag.bat"
```

Or if you have defined the RTIMEHOME environment variable:

```
"%RTIMEHOME%\rtiddsmag\scripts\rtiddsmag.bat"
```

- **<path to Micro examples>**

Connex DDS Micro examples are in <RTIMEHOME>/**example** after you've installed *Connex DDS Micro*. This document refers to the location of these examples as **<path to Micro examples>**.

Wherever you see **<path to Micro examples>**, replace it with the appropriate path.

Default path to the *Connex DDS Micro* examples:

- Linux systems: <RTIMEHOME>/**example/unix**
- Windows systems: <RTIMEHOME>**example\windows**

Note: The script to run MAG can be in two different folders:

- <NDDSHOME>/**bin/rtiddsmag**
- <RTIMEHOME>/**rtiddsmag/scripts/rtiddsmag**

The first script is included in the *Connex DDS Professional* bundle and the second in the *Connex DDS Micro* RTI package.

6.2 Command-Line Options

The following table shows the options available when using *rtiddsmag* to generate code for *Connex DDS Micro* applications.

Table 6.1 Command-Line Options for *rtiddsmag*

Option	Description
-d <outdir>	Generates the output in the specified directory. By default, MAG will generate files in the directory where the XML file is located.
-dontAddLocations	Use this flag to avoid adding the input file location of fields into the generated files. By default (when this flag is not used), MAG will add the location where an entity was defined in the XML file. The location will be placed above the definition of that entity in the generated code.
-dontOptimizeSE	Use this flag to avoid static endpoint discovery optimization. Then MAG will include all DataWriters and DataReaders when calculating the remote entities. By default (when this option is not used) MAG will optimize the number of remote entities by only including Data Writers and DataReaders that use the same Topic in the remote model.
-dontUpdateResourceLimits	Use this flag to avoid automatically updating the resource limit settings for the DomainParticipantFactory, DomainParticipants, DataReaders, and DataWriters. Note: The use of this flag for the DomainParticipantFactory is currently not supported. By default (when this flag is not used), MAG will update the resource limits so it will at least be able to support the entities defined in the XML file. If your applications communicate with more remote entities than the ones specified in the XML file, you might need to manually update them.
-dontUseDefaultValues	Use this flag to avoid automatically generating code using default QoS policy values when possible. By default (when this flag is not used), MAG will check whether the values that are set in every element of the QoS policies for each entity are the same as the defaults used by <i>Connex DDS Micro</i> . If that's the case, the generated code will contain the default values for those policies, instead of the values set by the user.
-dpdeName <name>	Specifies the name used by MAG when registering a DPDE discovery plugin. By default, this name is dpde .
-dpseName <name>	Specifies the name used by MAG when registering a DPSE discovery plugin. By default, this name is dpse .
-help	Prints out the command-line options for MAG.
-idlFile <file>	Specifies the IDL file name used by <i>rtiddsgen</i> to generate the code. This value is used by MAG to specify the Plugin header generated by <i>rtiddsgen</i> . By default, MAG uses the name of the XML file.
-inputXml <file>	Specifies the XML configuration file used to generate code. The XML configuration file can be passed directly to MAG without using the <code>-inputXml</code> option, by default MAG knows that any argument with no option is the input file.
-language <C C++>	Specifies the language to use for the generated files. The default language is C
-onlyValidate	Causes MAG to just validate the input file. It will not generate any code.

Option	Description
-outputFinalQoS <QosLibrary::QosProfile>	Use this flag to display the final values of the specified QoS profile after applying inheritance. Although MAG currently doesn't generate code to set the QoS for <i>Connex DDS Micro</i> , using this flag will determine the final values in the profile after applying inheritance. For complex XML files, with multiple levels of inheritance, it might be a challenge to determine the final QoS values. Using this flag simplifies the process. Note: This option does not check whether or not the final values are supported by <i>Connex DDS Micro</i> .
-referencedFile <file>	Specifies a file which is referenced from the one being used to generate code. In general, it is recommended to split the application definition from the QoS definition. This way, the QoS can be shared among various applications. Note: Can be repeated: -referencedFile <file1> -referencedFile <file2>
-replace	Use this flag to overwrite existing generated files.
-securityName <name>	Specifies the name used by MAG when registering the <i>RTI Security Plugins</i> suite. By default, this name is sec . Note: This flag is currently not supported.
-shmemName <name>	Specifies the name used by MAG when registering a shared ememory (SHMEM) transport plugin. By default, this name is shmem .
-udpName <name>	Specifies the name used by MAG when registering a UDP transport plugin. By default, this name is udp .
-verbosity [1-4]	Sets the MAG verbosity: <ul style="list-style-type: none"> • 1: Exceptions. • 2: Exceptions and warnings. • 3: Exceptions, warnings, and information. (Default) • 4: Exceptions, warnings, information, and debug.
-version	Displays the version of MAG being used, such as 1.x.y.

6.3 Generated Files

The following table shows the files that MAG creates for an example XML file, **HelloWorld.xml** (which contains the application definition) and a referenced file, **HelloWorldQos.xml** (which contains the QoS definition). This second file is optional; you can define the QoS in the application file.

Table 6.2 C and C++ Files Created for Example HelloWorld.xml

Generated Files	Description
HelloWorldAppgen.h (C and C++)	Generated code for each DDS <i>Entity</i> and its run-time components.
HelloWorldAppgen.c (C and C++)	Generated code for each Entity Model; also contains the values of each array used in the header file.

Generated Files	Description
HelloWorldAppgen_plugin.h (C++ only)	Header file that contains the declarations of all the wrappers.
HelloWorldAppgen_plugin.cxx (C++ only)	A wrapper for the <code>_get()</code> call (<code>get_plugin_type</code>): <pre>struct DDS_TypePluginI *HelloWorldPlugin_get_cpp(void) { return HelloWorldPlugin_get(); }</pre>

6.3.1 Integrating Generated Files into Your Application's Build

Integrating the generated files into your application is as easy as including the generated files **HelloWorldAppgen.h** and **HelloWorldAppgen.c** in your application. If your application uses C++, you will also need to include **HelloWorldAppgen_plugin.h** and **HelloWorldAppgen_plugin.cxx**.

Then you can create entities using the standard **DDS_DomainParticipantFactory_create_participant_from_config()** operation and retrieve all the entities from your application code using the standard **lookup_<entity>_by_name()** operations, such as **lookup_datawriter_by_name()**. For details on these operations, see the `DomainParticipantFactory` module in the *Connex DDS Micro* API reference HTML documentation, available at <https://community.rti.com/documentation/>.

6.4 A "Hello, World" Example

This simple scenario consists of two applications: **HelloWorld_publisher**, which writes the *Topic*, **HelloWorldTopic**, and **HelloWorld_subscriber**, which subscribes to that *Topic*.

The files for this example are provided when you install *Connex DDS Micro*. You will find them in the directory `<path to Micro examples>/C/HelloWorld_appgen`. (See [6.1 Paths Mentioned in Documentation on page 53](#).)

6.4.1 Generate Type-Support Code from the Type Definition

The first step is to describe the data type in a programming language-neutral manner. Three languages are supported by *RTI Code Generator*: XML, IDL, and XSD. These three languages provide equivalent type-definition capabilities, so you can choose whichever one you prefer. You can even transform between one of these three languages and another with *RTI Code Generator*. That said, since the rest of the configuration files use XML, it is often more convenient to also use XML to describe the data types, so they can be shared or moved to other XML configuration files.

The file **HelloWorld.xml** contains the XML description of the data type. You can find this file in `<path to Micro examples>/C/HelloWorld_appgen`.

Let's examine the type used in this example:

```
<types>
  <const name="MAX_NAME_LEN" type="long" value="64"/>
```

```
<const name="MAX_MSG_LEN" type="long" value="128"/>
<struct name="HelloWorld">
  <member name="sender" type="string" stringMaxLength="MAX_NAME_LEN" key="true"/>
  <member name="message" type="string" stringMaxLength="MAX_MSG_LEN"/>
  <member name="count" type="long"/>
</struct>
</types>
```

The data associated with the HelloWorld *Topic* consists of two strings and a numeric counter:

1. The first string contains the name of the sender of the message. This field is marked as the “key” since it signals the identity of the data-object.
2. The second string contains a message.
3. The third field is a simple counter, which the application increments with each message.

Once the type has been defined, we use *rtiddsgen* to generate the code for the HelloWorld data type.

We will use the C language in this example.

To generate code with *rtiddsgen*:

- On a Windows system:

From your command shell, change directory to **<path to Micro examples>\C\HelloWorld_appgen** and type:

```
<RTIMEHOME>\rtiddsgen\scripts\rtiddsgen.bat -language C -micro HelloWorld.xml
```

Note: The Visual Studio solution in the example folder automatically calls *rtiddsgen*.

- On a Linux or macOS system:

From your command shell, change directory to **<path to Micro examples>/C/HelloWorld_appgen** and type:

```
<RTIMEHOME>/rtiddsgen/scripts/rtiddsgen -language C -micro HelloWorld.xml
```

After running *rtiddsgen*, you will see the following files in the **HelloWorld_appgen** directory:

- **HelloWorld.h**
- **HelloWorld.c**
- **HelloWorldPlugin.h**
- **HelloWorldPlugin.c**
- **HelloWorldSupport.h**
- **HelloWorldSupport.c**

The most notable files are **HelloWorld.h** and **HelloWorldPlugin.h**:

- **HelloWorld.h** contains the declaration of the C structure, built according to the specification in the XML file:

```
typedef struct HelloWorld
{
    CDR_String sender;
    CDR_String message;
    CDR_Long count;
} HelloWorld;
```

- **HelloWorldPlugin.h** contains the **get_plugin_type()** function that MAG will use when generating the code to create all the DDS entities:

```
NDDSUSERDllExport extern struct NDDS_Type_Plugin*
HelloWorldTypePlugin_get(void);
```

6.4.2 Generate DDS Entities from the System Definition

This step uses *rtiddsmag* to generate code to support the creation of DDS entities using *XML-Based Application Creation*.

rtiddsmag supports C and C++. We will use C in this example.

Note: You can do this step before or after generating Type-Support from the Type definition since the type code doesn't need to exist when running *rtiddsmag*.

To generate code with *rtiddsmag*:

- On a Windows system:

From your command shell, change directory to **<path to Micro examples>\C\HelloWorld_app-gen** and type:

```
<NDDSHOME>\bin\rtiddsmag.bat -language C -referencedFile HelloWorldQos.xml HelloWorld.xml
```

or

```
<RTIMEHOME>\rtiddsmag\scripts\rtiddsmag.bat -language C -referencedFile HelloWorldQos.xml HelloWorld.xml
```

Note: The Visual Studio solution in the example folder automatically calls *rtiddsmag*.

- On a Linux or macOS system:

From your command shell, change directory to **<path to Micro examples>/C/HelloWorld_app-gen** and type:

```
<NDDSHOME>/bin/rtiddsmag -language C -referencedFile HelloWorldQos.xml HelloWorld.xml
```

or

```
<RTIMEHOME>/rtiddsmag/scripts/rtiddsmag -language C -referencedFile HelloWorldQos.xml HelloWorld.xml
```

We will examine the content of the generated files in the next section.

6.4.3 Examine the XML Configuration Files and the Generated Code

The entire **HelloWorld.xml** file is shown below. Let's review its content to see how this scenario was constructed. The main sections in the file are:

- [6.4.3.1 Type Definition on the next page](#)
- [6.4.3.2 Domain Definition on the next page](#)
- [6.4.3.3 DomainParticipant Definition on page 63](#)

```
<?xml version="1.0"?>
<dds xmlns:xsi="http://www.w3.org/2001/XMLSchema-instance"
xsi:noNamespaceSchemaLocation="http://community.rti.com/schema/current/rti_dds_profiles.xsd">
  <!-- Type Definition -->
  <types>
    <const name="MAX_NAME_LEN" type="int32" value="64"/>
    <const name="MAX_MSG_LEN" type="int32" value="128"/>
    <struct name="HelloWorld">
      <member name="sender" type="string" stringMaxLength="MAX_NAME_LEN" key="true"/>
      <member name="message" type="string" stringMaxLength="MAX_MSG_LEN"/>
      <member name="count" type="int32"/>
    </struct>
  </types>
  <!-- Domain Library -->
  <domain_library name="HelloWorldLibrary">
    <domain name="HelloWorldDomain" domain_id="0">
      <register_type name="HelloWorldType" type_ref="HelloWorld">
      </register_type>
      <topic name="HelloWorldTopic" register_type_ref="HelloWorldType">
        <registered_name>HelloWorldTopic</registered_name>
      </topic>
    </domain>
  </domain_library>
  <!-- Participant Library -->
  <domain_participant_library name="HelloWorldAppLibrary">
    <domain_participant name="HelloWorldDPDEPubDP"
domain_ref="HelloWorldLibrary::HelloWorldDomain">
      <publisher name="HelloWorldDPDEPub">
        <data_writer topic_ref="HelloWorldTopic" name="HelloWorldDPDEDW">
          <datawriter_qos base_name="QosLibrary::DPDEProfile"/>
        </data_writer>
      </publisher>
    </domain_participant>
  </domain_participant_library>
</dds>
```



```

    <domain_participant_qos base_name="QosLibrary::DPDEProfile"/>
</domain_participant>
<domain_participant name="HelloWorldDPDESubDP"
  domain_ref="HelloWorldLibrary::HelloWorldDomain">
  <subscriber name="HelloWorldDPDESub">
    <data_reader topic_ref="HelloWorldTopic" name="HelloWorldDPDEDR">
      <datareader_qos base_name="QosLibrary::DPDEProfile"/>
    </data_reader>
  </subscriber>
  <domain_participant_qos base_name="QosLibrary::DPDEProfile"/>
</domain_participant>
<domain_participant name="HelloWorldDPSEPubDP"
  domain_ref="HelloWorldLibrary::HelloWorldDomain">
  <publisher name="HelloWorldDPSEPub">
    <data_writer topic_ref="HelloWorldTopic" name="HelloWorldDPSEDR">
      <datawriter_qos base_name="QosLibrary::DPSEProfile"/>
    </data_writer>
  </publisher>
  <domain_participant_qos base_name="QosLibrary::DPSEProfile"/>
</domain_participant>
<domain_participant name="HelloWorldDPSESubDP"
  domain_ref="HelloWorldLibrary::HelloWorldDomain">
  <subscriber name="HelloWorldDPSESub">
    <data_reader topic_ref="HelloWorldTopic" name="HelloWorldDPSEDR">
      <datareader_qos base_name="QosLibrary::DPSEProfile"/>
    </data_reader>
  </subscriber>
  <domain_participant_qos base_name="QosLibrary::DPSEProfile"/>
</domain_participant>
</domain_participant_library>
</dds>

```

6.4.3.1 Type Definition

rtiddsmag doesn't use the types section of the XML file to generate any code. This section is used by *rtiddsgen* to generate the code to support the direct use of the structure 'HelloWorld' from application code (see [6.4.1 Generate Type-Support Code from the Type Definition on page 57](#)).

```

<types>
  <const name="MAX_NAME_LEN" type="int32" value="64"/>
  <const name="MAX_MSG_LEN" type="int32" value="128"/>
  <struct name="HelloWorld">
    <member name="sender" type="string" stringMaxLength="MAX_NAME_LEN" key="true"/>
    <member name="message" type="string" stringMaxLength="MAX_MSG_LEN"/>
    <member name="count" type="int32"/>
  </struct>
</types>

```

6.4.3.2 Domain Definition

The domain section defines the system's *Topics* and their corresponding data types. To define a *Topic*, the associated data type must be registered with the domain, giving it a registered type name. The registered

type name is used to refer to that data type within the domain when the *Topic* is defined.

In this example, the configuration file registers the previously defined HelloWorld type under the name HelloWorldType. Then it defines a *Topic* named HelloWorldTopic, which is associated with the registered type, referring to its registered name, HelloWorldType. The value used in `get_plugin_type` depends on how the registration of the data-type is configured inside the domain:

1. If a `<register_type>` tag is specified *without* a `type_ref` attribute, the value of `get_type_plugin` is generated from the `<register_type>` tag plus the string "Plugin_get".
2. If a `<register_type>` tag is specified *with* a `type_ref` attribute, the value of `get_type_plugin` is generated from that attribute plus the string "TypePlugin_get". Our example has `type_ref = "HelloWorld"`, so the value of `get_type_plugin` will be `HelloWorldTypePlugin_get`.

```
<!-- Domain Library -->
<domain_library name="HelloWorldLibrary">
  <domain name="HelloWorldDomain" domain_id="0">
    <register_type name="HelloWorldType" type_ref="HelloWorld">
    </register_type>
    <topic name="HelloWorldTopic" register_type_ref="HelloWorldType">
    </topic>
  </domain>
</domain_library>
```

rtiddsmag generates the following code for each entity that uses this *Topic*:

- **HelloWorldAppgen.c**

```
const struct APPGEN_TypeRegistrationModel
HelloWorldAppLibrary_HelloWorldDPDEPubDP_type_registrations[1] =
{
  {
    "HelloWorldType", /* registered_type_name */
    HelloWorldTypePlugin_get /* get_type_plugin */
  }
};

const struct APPGEN_TopicModel
HelloWorldAppLibrary_HelloWorldDPDEPubDP_topics[1] =
{
  {
    "HelloWorldTopic", /* topic_name */
    "HelloWorldType", /* type_name */
    DDS_TopicQos_INITIALIZER /* topic_qos*/
  }
};
```

These two structures are used in the DomainParticipant definition, where they will be registered by *Connex DDS Micro* when calling the Micro Application Generation API.

- **HelloWorldAppgen.h**

```
extern const struct APPGEN_TypeRegistrationModel
HelloWorldAppLibrary_HelloWorldDPDEPubDP_type_registrations[1];

extern const struct APPGEN_TopicModel
HelloWorldAppLibrary_HelloWorldDPDEPubDP_topics[1];

#define RTI_APP_GEN_DP_HelloWorldAppLibrary_HelloWorldDPDEPubDP \
{ \
    ...
    1UL, /* type_registration_count */ \
    HelloWorldAppLibrary_HelloWorldDPDEPubDP_type_registrations, /* type_registrations*/ \
    1UL, /* topic_count */ \
    HelloWorldAppLibrary_HelloWorldDPDEPubDP_topics, /* topics */ \
    ...
}
```

Note: *Connex DDS Micro* automatically registers the types that *rtiddsmag* generates. This means the content inside the Domain definition must match the types generated by *rtiddsgen*.

6.4.3.3 DomainParticipant Definition

The DomainParticipant section defines the *DomainParticipants* in the system and the *DataWriters* and *DataReaders* that each *DomainParticipant* has. *DomainParticipants* are defined within the `<domain_participant_library>` tag.

Each *DomainParticipant*:

- Has a unique name (within the library) which will be used later by the application that creates it.
- Is associated with a domain, which defines the **domain_id**, *Topics*, and the data types the *DomainParticipant* will use.
- Defines the *Publishers* and *Subscribers* within the *DomainParticipant*. *Publishers* contain *DataWriters*, *Subscribers* contain *DataReaders*.
- Defines the set of *DataReaders* it will use to read data. Each *DataReader* has a QoS and a unique name which can be used from application code to retrieve it.
- Defines the set of *DataWriters* it will use to write data. Each *DataWriter* has a QoS and a unique name which can be used from application code to retrieve it.
- Optionally, the *DomainParticipants*, *Publishers*, *Subscribers*, *DataWriters*, and *DataReaders* can specify a QoS profile that will be used to configure them.

The example below defines four *DomainParticipants*, two of them (HelloWorldDPDEPubDP and HelloWorldDPDESubDP) use Dynamic Participant/Dynamic Endpoint (DPDE) and the other two (Hel-

loWorldDPSEPubDP and HelloWorldDPSESubDP) use Dynamic Participant/Static Endpoint (DPSE) discovery:

```
<!-- Participant Library -->
<domain_participant_library name="HelloWorldAppLibrary">
  <domain_participant name="HelloWorldDPDEPubDP"
    domain_ref="HelloWorldLibrary::HelloWorldDomain">
    <publisher name="HelloWorldDPDEPub">
      <data_writer topic_ref="HelloWorldTopic" name="HelloWorldDPDEDW">
        <datawriter_qos base_name="QosLibrary::DPDEProfile"/>
      </data_writer>
    </publisher>
    <domain_participant_qos base_name="QosLibrary::DPDEProfile"/>
  </domain_participant>

  <domain_participant name="HelloWorldDPDESubDP"
    domain_ref="HelloWorldLibrary::HelloWorldDomain">
    <subscriber name="HelloWorldDPDESub">
      <data_reader topic_ref="HelloWorldTopic" name="HelloWorldDPDEDR">
        <datareader_qos base_name="QosLibrary::DPDEProfile"/>
      </data_reader>
    </subscriber>
    <domain_participant_qos base_name="QosLibrary::DPDEProfile"/>
  </domain_participant>

  <domain_participant name="HelloWorldDPSEPubDP"
    domain_ref="HelloWorldLibrary::HelloWorldDomain">
    <publisher name="HelloWorldDPSEPub">
      <data_writer topic_ref="HelloWorldTopic" name="HelloWorldDPSEDW">
        <datawriter_qos base_name="QosLibrary::DPSEProfile"/>
      </data_writer>
    </publisher>
    <domain_participant_qos base_name="QosLibrary::DPSEProfile"/>
  </domain_participant>

  <domain_participant name="HelloWorldDPSESubDP"
    domain_ref="HelloWorldLibrary::HelloWorldDomain">
    <subscriber name="HelloWorldDPSESub">
      <data_reader topic_ref="HelloWorldTopic" name="HelloWorldDPSEDR">
        <datareader_qos base_name="QosLibrary::DPSEProfile"/>
      </data_reader>
    </subscriber>
    <domain_participant_qos base_name="QosLibrary::DPSEProfile"/>
  </domain_participant>
</domain_participant_library>
```

Examining the XML, we see that:

- Each *DomainParticipant* is bound to the Domain, HelloWorldLibrary::HelloWorldDomain.

- The two *DomainParticipants* that use DPDE as their discovery mechanism inherit from the profile `QosLibrary::DPDELibrary`, while the other two that use DPSE as their discovery mechanism inherit from `QosLibrary::DPSELibrary`.
- Each *DomainParticipant* contains a single *Publisher* or *Subscriber*, which in turn contains a single *DataWriter* or *DataReader* that inherits from `QosLibrary::DPDELibrary` or `QosLibrary::DPSELibrary`, depending on the discovery mechanism used by its *DomainParticipant*.
- Each *DataWriter* writes the *Topic* `HelloWorldTopic`, which is defined in the domain `HelloWorldLibrary::HelloWorldDomain`. Each *DataReader* reads the same *Topic*.

Since both Dynamic *DomainParticipants* (those which are using DPDE as their discovery mechanism) are in the same domain and the *DataWriter* writes the same *Topic* that the *DataReader* reads, the two *DomainParticipants* will communicate. This also applies to both static participants (those which are using DPSE as their discovery mechanism); the only difference is that *rtiddsmag* will generate extra code to configure the remote entities (for details, see [6.4.7 Static Discovery on page 83](#)).

Let's look at the content of a *DomainParticipant* definition to explain the code generated by *rtiddsmag*.

```
<domain_participant name="HelloWorldDPDEPubDP"
  domain_ref="HelloWorldLibrary::HelloWorldDomain">
  <publisher name="HelloWorldDPDEPub">
    <data_writer topic_ref="HelloWorldTopic" name="HelloWorldDPDEDW">
      <datawriter_qos base_name="QosLibrary::DPDEProfile"/>
    </data_writer>
  </publisher>
  <domain_participant_qos base_name="QosLibrary::DPDEProfile"/>
</domain_participant>
```

rtiddsmag generates the code needed to register each component used by this *DomainParticipant* and unregister those components that are not being used. In our example, for each *DomainParticipant*, *rtiddsmag* registers the discovery transport, **dpde** or **dpse**; registers the UDP transport used by each *DomainParticipant* (since they use the same configuration, only one UDP transport configuration is generated); and unregisters the default UDP and INTRA transports, since they are not being used (these two are the only ones that can be unregistered by *rtiddsmag*).

It also creates the code for each entity. In this case, it generates the code needed to create:

- A *Publisher* named `HelloWorldDPDEPub`
- A *DataWriter* named `HelloWorldDPDEDW`
- A *DomainParticipant* named `HelloWorldDPDEPubDP`
- The QoS used by this *DomainParticipant* (see [6.4.4 QoS Definition on page 68](#))

HelloWorldAppgen.c

```

const struct ComponentFactoryUnregisterModel
HelloWorldAppLibrary_HelloWorldDPDEPubDP_unregister_components[2] =
{
    {
        "_udp", /* NETIO_DEFAULT_UDP_NAME */
        NULL, /* udp struct RT_ComponentFactoryProperty** */
        NULL /* udp struct RT_ComponentFactoryListener** */
    },
    {
        "_intra", /* NETIO_DEFAULT_INTRA_NAME */
        NULL, /* _intra struct RT_ComponentFactoryProperty** */
        NULL /* _intra struct RT_ComponentFactoryListener** */
    }
};

struct DPDE_DiscoveryPluginProperty
HelloWorldAppLibrary_HelloWorldDPDEPubDP_dpde[1] =
{
    RTI_APP_GEN___dpde__HelloWorldAppLibrary_HelloWorldDPDEPubDP_dpde1
};

struct UDP_InterfaceFactoryProperty
HelloWorldAppLibrary_HelloWorldDPDEPubDP_udpv4[1] =
{
    RTI_APP_GEN___udpv4__HelloWorldAppLibrary_HelloWorldDPDEPubDP_udp1
};

const struct ComponentFactoryRegisterModel
HelloWorldAppLibrary_HelloWorldDPDEPubDP_register_components[2] =
{
    {
        "dpde1", /* register_name */
        DPDE_DiscoveryFactory_get_interface, /* register_intf */
        &HelloWorldAppLibrary_HelloWorldDPDEPubDP_dpde[0]._parent, /* register_property */
        NULL /* register_listener */
    },
    {
        "udp1", /* register_name */
        UDP_InterfaceFactory_get_interface, /* register_intf */
        &HelloWorldAppLibrary_HelloWorldDPDEPubDP_udpv4[0]._parent._parent, /* register_
property */
        NULL /* register_listener */
    }
};

...

const struct APPGEN_DataWriterModel
HelloWorldAppLibrary_HelloWorldDPDEPubDP_publisher_HelloWorldDPDEPub_data_writers[1] =
{
    {
        "HelloWorldDPDEDW", /* name */
        1UL, /* multiplicity */
    }
};

```

```

        "HelloWorldTopic", /* topic_name */
        RTI_APP_GEN__DW_QOS>HelloWorldAppLibrary>HelloWorldDPDEPubDP>HelloWorldDPDEPub_
>HelloWorldDPDEDW /* writer_qos */
    }
};
const struct APPGEN_PublisherModel
>HelloWorldAppLibrary>HelloWorldDPDEPubDP_publishers[1] =
{
    {
        "HelloWorldDPDEPub", /* name */
        1UL, /* multiplicity */
        DDS_PublisherQos_INITIALIZER, /* publisher_qos */
        1UL, /* writer_count */
       >HelloWorldAppLibrary>HelloWorldDPDEPubDP_publisher>HelloWorldDPDEPub_data_writers /*
data_writers */
    }
};

```

HelloWorldAppgen.h

Note: The OSAPI_LOG_VERBOSITY_DEBUG element below is currently not supported.

```

extern struct DPDE_DiscoveryPluginProperty>HelloWorldAppLibrary>HelloWorldDPDEPubDP_dpde[1];
extern struct UDP_InterfaceFactoryProperty>HelloWorldAppLibrary>HelloWorldDPDEPubDP_udp4[1];
extern const struct ComponentFactoryUnregisterModel
>HelloWorldAppLibrary>HelloWorldDPDEPubDP_unregister_components[2];
extern const struct ComponentFactoryRegisterModel
>HelloWorldAppLibrary>HelloWorldDPDEPubDP_register_components[2];

#define RTI_APP_GEN__DPF>HelloWorldAppLibrary>HelloWorldDPDEPubDP \
{ \
    2UL, /* unregister_count */ \
>HelloWorldAppLibrary>HelloWorldDPDEPubDP_unregister_components, /* unregister_components
*/ \
    2UL, /* register_count */ \
>HelloWorldAppLibrary>HelloWorldDPDEPubDP_register_components, /* register_components */ \
    RTI_APP_GEN__DPF_QOS_QosLibrary_DefaultProfile, /* factory_qos */ \
    OSAPI_LOG_VERBOSITY_DEBUG /* verbosity */ \
}

extern const struct APPGEN_TypeRegistrationModel
>HelloWorldAppLibrary>HelloWorldDPDEPubDP_type_registrations[1];
extern const struct APPGEN_TopicModel>HelloWorldAppLibrary>HelloWorldDPDEPubDP_topics[1];
extern const struct APPGEN_PublisherModel
>HelloWorldAppLibrary>HelloWorldDPDEPubDP_publishers[1];

#define RTI_APP_GEN__DP>HelloWorldAppLibrary>HelloWorldDPDEPubDP \
{ \
    "HelloWorldDPDEPubDP", /* name */ \
    RTI_APP_GEN__DPF>HelloWorldAppLibrary>HelloWorldDPDEPubDP, /* domain_participant_factory */
\
    RTI_APP_GEN__DP_QOS>HelloWorldAppLibrary>HelloWorldDPDEPubDP, /* domain_participant_qos */
\
    0L, /* domain_id */ \
}

```

```

1UL, /* type_registration_count */ \
HelloWorldAppLibrary_HelloWorldDPDEPubDP_type_registrations, /* type_registrations */ \
1UL, /* topic_count */ \
HelloWorldAppLibrary_HelloWorldDPDEPubDP_topics, /* topics */ \
1UL, /* publisher_count */ \
HelloWorldAppLibrary_HelloWorldDPDEPubDP_publishers, /* publishers */ \
0UL, /* subscriber_count */ \
NULL, /* subscribers */ \
0UL, /* remote_participant_count */ \
NULL, /* remote_participants */ \
0UL, /* flow_controller_count */ \
NULL, /* flow_controllers */ \
}

```

6.4.4 QoS Definition

The defined DDS Entities have an associated QoS, which can be defined in a separate file such as **HelloWorldQos.xml** or within the System XML file.

See the entire file below. Then we will examine the file section by section, showing the code generated by *rtiddsmag*.

```

<?xml version="1.0"?>
<dds xmlns:xsi="http://www.w3.org/2001/XMLSchema-instance"
  xsi:noNamespaceSchemaLocation="http://community.rti.com/schema/current/rti_dds_profiles.xsd">
  <qos_library name="QosLibrary">
    <qos_profile name="DefaultProfile" is_default_participant_factory_profile="true">

      <!-- Participant Factory Qos -->
      <participant_factory_qos>
        <entity_factory>
          <autoenable_created_entities>>false</autoenable_created_entities>
        </entity_factory>
      </participant_factory_qos>

      <!-- Participant Qos -->
      <domain_participant_qos>
        <discovery>
          <accept_unknown_peers>>false</accept_unknown_peers>
          <initial_peers>
            <element>127.0.0.1</element>
            <element>239.255.0.1</element>
          </initial_peers>
          <enabled_transports>
            <element>udpv4</element>
          </enabled_transports>
          <multicast_receive_addresses>
            <element>udpv4://127.0.0.1</element>
            <element>udpv4://239.255.0.1</element>
          </multicast_receive_addresses>
        </discovery>
        <default_unicast>
          <value>

```



```

        <element>
            <transports>
                <element>udpv4</element>
            </transports>
        </element>
    </value>
</default_unicast>
<transport_builtin>
    <mask>UDpv4</mask>
</transport_builtin>
<resource_limits>
    <local_writer_allocation>
        <max_count>1</max_count>
    </local_writer_allocation>
    <local_reader_allocation>
        <max_count>1</max_count>
    </local_reader_allocation>
    <local_publisher_allocation>
        <max_count>1</max_count>
    </local_publisher_allocation>
    <local_subscriber_allocation>
        <max_count>1</max_count>
    </local_subscriber_allocation>
    <local_topic_allocation>
        <max_count>1</max_count>
    </local_topic_allocation>
    <local_type_allocation>
        <max_count>1</max_count>
    </local_type_allocation>
    <remote_participant_allocation>
        <max_count>8</max_count>
    </remote_participant_allocation>
    <remote_writer_allocation>
        <max_count>8</max_count>
    </remote_writer_allocation>
    <remote_reader_allocation>
        <max_count>8</max_count>
    </remote_reader_allocation>
    <max_receive_ports>32</max_receive_ports>
    <max_destination_ports>32</max_destination_ports>
</resource_limits>
</domain_participant_qos>
<!-- DataWriter Qos -->
<datawriter_qos>
    <history>
        <depth>32</depth>
    </history>
    <resource_limits>
        <max_instances>2</max_instances>
        <max_samples>64</max_samples>
        <max_samples_per_instance>32</max_samples_per_instance>
    </resource_limits>
    <reliability>

```

```

        <kind>RELIABLE_RELIABILITY_QOS</kind>
    </reliability>
    <protocol>
        <rtps_reliable_writer>
            <heartbeat_period>
                <nanosec>250000000</nanosec>
                <sec>0</sec>
            </heartbeat_period>
        </rtps_reliable_writer>
    </protocol>
    <!-- transports -->
    <unicast>
        <value>
            <element>
                <transports>
                    <element>udpv4</element>
                </transports>
            </element>
        </value>
    </unicast>
</datawriter_qos>
<!-- DataReader Qos -->
<datareader_qos>
    <history>
        <depth>32</depth>
    </history>
    <resource_limits>
        <max_instances>2</max_instances>
        <max_samples>64</max_samples>
        <max_samples_per_instance>32</max_samples_per_instance>
    </resource_limits>
    <reliability>
        <kind>RELIABLE_RELIABILITY_QOS</kind>
    </reliability>
    <reader_resource_limits>
        <max_remote_writers>10</max_remote_writers>
        <max_remote_writers_per_instance>10</max_remote_writers_per_instance>
    </reader_resource_limits>
    <!-- transports -->
    <unicast>
        <value>
            <element>
                <transports>
                    <element>udpv4</element>
                </transports>
            </element>
        </value>
    </unicast>
    <multicast>
        <value>
            <element>
                <receive_address>127.0.0.1</receive_address>
                <transports>
                    <element>udpv4</element>

```

```

        </multicast>
    </datareader_qos>
</qos_profile>

<qos_profile name="DPDEProfile" base_name="DefaultProfile">
    <domain_participant_qos>
        <discovery_config>
            <builtin_discovery_plugins>SDP</builtin_discovery_plugins>
        </discovery_config>
    </domain_participant_qos>
</qos_profile>

<qos_profile name="DPSEProfile" base_name="DefaultProfile">
    <domain_participant_qos>
        <discovery_config>
            <builtin_discovery_plugins>DPSE</builtin_discovery_plugins>
        </discovery_config>
    </domain_participant_qos>
</qos_profile>
</qos_library>
</dds>

```

Note: *rtiddsmag* only generates code for the QoSs used by at least one entity, unless the profile has either of the default flags **is_default_participant_factory_profile** or **is_default_qos** set to true.

6.4.4.1 DomainParticipant Factory QoS

Note: The ability to set resource limits and verbosity for the DomainParticipantFactory is currently not supported.

rtiddsmag only generates code for the `<participant_factory_qos>` in the `<qos_profile>` that has the flag **is_default_participant_factory_profile** set to true. The log verbosity can also be configured by using `<verbosity>` inside `<logging>`. For example:

```

<!-- Participant Factory Qos -->
<participant_factory_qos>
    <entity_factory>
        <autoenable_created_entities>>false</autoenable_created_entities>
    </entity_factory>
    <resource_limits>
        <max_participants>4</max_participants>
        <max_components>20</max_components>
    </resource_limits>
    <logging>
        <verbosity>ALL</verbosity>
    </logging>
</participant_factory_qos>

```

rtiddsmag generates the following code:

HelloWorldAppgen.h

```
#define RTI_APP_GEN___DPF_QOS_QosLibrary_DefaultProfile \
{ \
  { /* entity_factory */ \
    DDS_BOOLEAN_FALSE /* autoenable_created_entities */ \
  }, \
  { /* resource_limits */ \
    4L, /* max_participants */ \
    20L /* max_components */ \
  } \
}

#define RTI_APP_GEN___DPF>HelloWorldAppLibrary>HelloWorldDPDEPubDP \
{ \
  ...,
  RTI_APP_GEN___DPF_QOS_QosLibrary_DefaultProfile, /* factory_qos */ \
  OSAPI_LOG_VERBOSITY_DEBUG /* verbosity */ \
}
```

6.4.4.2 DomainParticipant QoS

The example defines a base profile named *DefaultProfile*, which contains the base QoSs used by each *DomainParticipant*. You can see the content of the *DomainParticipant* QoS below.

```
<domain_participant_qos>
  <discovery>
    <accept_unknown_peers>>false</accept_unknown_peers>
    <initial_peers>
      <element>127.0.0.1</element>
      <element>239.255.0.1</element>
    </initial_peers>
    <enabled_transports>
      <element>udpv4</element>
    </enabled_transports>
    <multicast_receive_addresses>
      <element>udpv4://127.0.0.1</element>
      <element>udpv4://239.255.0.1</element>
    </multicast_receive_addresses>
  </discovery>
  <default_unicast>
    <value>
      <element>
        <transports>
          <element>udpv4</element>
        </transports>
      </element>
    </value>
  </default_unicast>
  <transport_builtin>
    <mask>UDpv4</mask>
  </transport_builtin>
```

```

<resource_limits>
  <local_writer_allocation>
    <max_count>1</max_count>
  </local_writer_allocation>
  <local_reader_allocation>
    <max_count>1</max_count>
  </local_reader_allocation>
  <local_publisher_allocation>
    <max_count>1</max_count>
  </local_publisher_allocation>
  <local_subscriber_allocation>
    <max_count>1</max_count>
  </local_subscriber_allocation>
  <local_topic_allocation>
    <max_count>1</max_count>
  </local_topic_allocation>
  <local_type_allocation>
    <max_count>1</max_count>
  </local_type_allocation>
  <remote_participant_allocation>
    <max_count>8</max_count>
  </remote_participant_allocation>
  <remote_writer_allocation>
    <max_count>8</max_count>
  </remote_writer_allocation>
  <remote_reader_allocation>
    <max_count>8</max_count>
  </remote_reader_allocation>
  <max_receive_ports>32</max_receive_ports>
  <max_destination_ports>32</max_destination_ports>
</resource_limits>
</domain_participant_qos>

```

This *DomainParticipant* is then inherited by two different profiles, which set up the discovery mechanism:

```

<domain_participant_qos>
  <discovery_config>
    <builtin_discovery_plugins>SDP</builtin_discovery_plugins>
  </discovery_config>
</domain_participant_qos>
<domain_participant_qos>
  <discovery_config>
    <builtin_discovery_plugins>DPSE</builtin_discovery_plugins>
  </discovery_config>
</domain_participant_qos>

```

rtiddsmag generates the following code for each *DomainParticipant* whose QoS inherits from any of the previous ones, adding those values that are specified in the XML configuration file (which is not the case in our example).

HelloWorldAppgen.c

```

const char *const HelloWorldAppLibrary_HelloWorldDPDEPubDP_initial_peers[2] =
{

```

```

    "127.0.0.1",
    "239.255.0.1"
};
const char *const HelloWorldAppLibrary_HelloWorldDPDEPubDP_discovery_enabled_transports[3] =
{
    "udp1://",
    "udp1://127.0.0.1",
    "udp1://239.255.0.1"
};
const char *const HelloWorldAppLibrary_HelloWorldDPDEPubDP_transport_enabled_transports[1] =
{
    "udp1"
};
const char *const HelloWorldAppLibrary_HelloWorldDPDEPubDP_user_traffic_enabled_transports[1] =
{
    "udp1://"
};

```

HelloWorldAppgen.h

```

extern const char *const HelloWorldAppLibrary_HelloWorldDPDEPubDP_initial_peers[2];
extern const char *const HelloWorldAppLibrary_HelloWorldDPDEPubDP_discovery_enabled_transports
[3];
extern const char *const HelloWorldAppLibrary_HelloWorldDPDEPubDP_transport_enabled_transports
[1];
extern const char *const HelloWorldAppLibrary_HelloWorldDPDEPubDP_user_traffic_enabled_
transports[1];

#define RTI_APP_GEN__DP_QOS_HelloWorldAppLibrary_HelloWorldDPDEPubDP \
{ \
    { /* entity_factory */ \
        DDS_BOOLEAN_TRUE /* autoenable_created_entities */ \
    }, \
    { /* discovery */ \
        REDA_StringSeq_INITIALIZER_W_LOAN(HelloWorldAppLibrary_HelloWorldDPDEPubDP_initial_
peers, 2, 2), /* initial_peers */ \
        REDA_StringSeq_INITIALIZER_W_LOAN(HelloWorldAppLibrary_HelloWorldDPDEPubDP_discovery_
enabled_transports, 3, 3), /* enabled_transports */ \
        { \
            { { "dpdel1" } }, /* RT_ComponentFactoryId_INITIALIZER */ \
            NDDS_Discovery_Property_INITIALIZER \
        }, /* discovery_component */ \
        DDS_BOOLEAN_FALSE /* accept_unknown_peers */ \
    }, \
    { /* resource_limits */ \
        1L, /* local_writer_allocation */ \
        1L, /* local_reader_allocation */ \
        1L, /* local_publisher_allocation */ \
        1L, /* local_subscriber_allocation */ \
        1L, /* local_topic_allocation */ \
        1L, /* local_type_allocation */ \
        8L, /* remote_participant_allocation */ \
        8L, /* remote_writer_allocation */ \
        8L, /* remote_reader_allocation */ \
    } \
}

```

```

    32L, /* matching_writer_reader_pair_allocation */ \
    32L, /* matching_reader_writer_pair_allocation */ \
    32L, /* max_receive_ports */ \
    32L, /* max_destination_ports */ \
    65536, /* unbound_data_buffer_size */ \
    500UL /* shmем_ref_transfer_mode_max_segments */ \
}, \
DDS_ENTITY_NAME_QOS_POLICY_DEFAULT, \
DDS_WIRE_PROTOCOL_QOS_POLICY_DEFAULT, \
{ /* transports */ \
    REDA_StringSeq_INITIALIZER_W_LOAN(HelloWorldAppLibrary>HelloWorldDPDEPubDP_transport_
enabled_transports, 1, 1) /* enabled_transports */ \
}, \
{ /* user_traffic */ \
    REDA_StringSeq_INITIALIZER_W_LOAN(HelloWorldAppLibrary>HelloWorldDPDEPubDP_user_
traffic_enabled_transports, 1, 1) /* enabled_transports */ \
}, \
DDS_TRUST_QOS_POLICY_DEFAULT, \
DDS_PROPERTY_QOS_POLICY_DEFAULT \
}

```

6.4.4.3 Publisher QoS

Our example doesn't specify any value for *Publisher QoS*, however *rtiddsmag* would generate code if it was specified.

6.4.4.4 DataWriter QoS

The example defines a base profile named *DefaultProfile*, which contains the base QoSs used by each *DomainParticipant*. You can see the content of the *DataWriter QoS* below.

```

<!-- DataWriter Qos -->
<datawriter_qos>
  <history>
    <depth>32</depth>
  </history>
  <resource_limits>
    <max_instances>2</max_instances>
    <max_samples>64</max_samples>
    <max_samples_per_instance>32</max_samples_per_instance>
  </resource_limits>
  <reliability>
    <kind>RELIABLE_RELIABILITY_QOS</kind>
  </reliability>
  <protocol>
    <rtps_reliable_writer>
      <heartbeat_period>
        <nanosec>250000000</nanosec>
        <sec>0</sec>
      </heartbeat_period>
    </rtps_reliable_writer>
  </protocol>

```

```

<!-- transports -->
<unicast>
  <value>
    <element>
      <transports>
        <element>udpv4</element>
      </transports>
    </element>
  </value>
</unicast>
</datawriter_qos>

```

rtiddsmag generates the following code:

HelloWorldAppgen.c

```

const char *const
HelloWorldAppLibrary_HelloWorldDPDEPubDP_HelloWorldDPDEPub_HelloWorldDPDEDW_transport_enabled_
transports[1] =
{
  "udp1://"
};

```

HelloWorldAppgen.h

```

extern const char *const
HelloWorldAppLibrary_HelloWorldDPDEPubDP_HelloWorldDPDEPub_HelloWorldDPDEDW_transport_enabled_
transports[1];

#define RTI_APP_GEN__DW_QOS_HelloWorldAppLibrary_HelloWorldDPDEPubDP_HelloWorldDPDEPub_
HelloWorldDPDEDW \
{ \
  DDS_DEADLINE_QOS_POLICY_DEFAULT, \
  DDS_LIVELINESS_QOS_POLICY_DEFAULT, \
  { /* history */ \
    DDS_KEEP_LAST_HISTORY_QOS, /* kind */ \
    32L /* depth */ \
  }, \
  { /* resource_limits */ \
    64L, /* max_samples */ \
    2L, /* max_instances */ \
    32L /* max_samples_per_instance */ \
  }, \
  DDS_OWNERSHIP_QOS_POLICY_DEFAULT, \
  DDS_OWNERSHIP_STRENGTH_QOS_POLICY_DEFAULT, \
  DDS_LATENCY_BUDGET_QOS_POLICY_DEFAULT, \
  { /* reliability */ \
    DDS_RELIABLE_RELIABILITY_QOS, /* kind */ \
    { /* max_blocking_time */ \
      0L, /* sec */ \
      100000000L /* nanosec */ \
    } \
  }, \
  DDS_DURABILITY_QOS_POLICY_DEFAULT, \
  DDS_DESTINATION_ORDER_QOS_POLICY_DEFAULT, \

```



```

DDS_TRANSPORT_ENCAPSULATION_QOS_POLICY_DEFAULT, \
DDS_DATA_REPRESENTATION_QOS_POLICY_DEFAULT, \
{ /* protocol */ \
  DDS_RTPS_AUTO_ID, /* rtps_object_id */ \
  { /* rtps_reliable_writer */ \
    { /* heartbeat_period */ \
      0L, /* sec */ \
      250000000L /* nanosec */ \
    }, \
    1L, /* heartbeats_per_max_samples */ \
    DDS_LENGTH_UNLIMITED, /* max_send_window */ \
    DDS_LENGTH_UNLIMITED, /* max_heartbeat_retries */ \
    { /* first_write_sequence_number */ \
      0, /* high */ \
      1 /* low */ \
    } \
  }, \
  DDS_BOOLEAN_TRUE /* serialize_on_write */ \
}, \
DDS_TYPESUPPORT_QOS_POLICY_DEFAULT, \
{ /* transports */ \
  REDA_StringSeq_INITIALIZER_W_LOAN(HelloWorldAppLibrary>HelloWorldDPDEPubDP_
HelloWorldDPDEPub>HelloWorldDPDEDW_transport_enabled_transports, 1, 1) /* enabled_transports */
\
}, \
RTI_MANAGEMENT_QOS_POLICY_DEFAULT, \
DDS_DATAWRITERRESOURCE_LIMITS_QOS_POLICY_DEFAULT, \
DDS_PUBLISH_MODE_QOS_POLICY_DEFAULT, \
DDS_DATAWRITERQOS_TRUST_INITIALIZER \
DDS_DATAWRITERQOS_APPGEN_INITIALIZER \
NULL, \
DDS_DataWriterTransferModeQosPolicy_INITIALIZER \
}

```

6.4.4.5 Subscriber QoS

Our example doesn't specify any value for Subscriber QoS, however *rtiddsmag* would generate code if it was specified.

6.4.4.6 DataReader QoS

The example defines a base profile named *DefaultProfile*, which contains the base QoSs used by each *DomainParticipant*. You can see the content of the *DataReader* QoS below.

```

<!-- DataReader QoS -->
<datareader_qos>
  <history>
    <depth>32</depth>
  </history>
  <resource_limits>
    <max_instances>2</max_instances>
    <max_samples>64</max_samples>

```

```

    <max_samples_per_instance>32</max_samples_per_instance>
</resource_limits>
<reliability>
    <kind>RELIABLE_RELIABILITY_QOS</kind>
</reliability>
<reader_resource_limits>
    <max_remote_writers>10</max_remote_writers>
    <max_remote_writers_per_instance>10</max_remote_writers_per_instance>
</reader_resource_limits>
<!-- transports -->
<unicast>
    <value>
        <element>
            <transports>
                <element>udpv4</element>
            </transports>
        </element>
    </value>
</unicast>
<multicast>
    <value>
        <element>
            <receive_address>127.0.0.1</receive_address>
            <transports>
                <element>udpv4</element>
            </transports>
        </element>
    </value>
</multicast>
</datareader_qos>

```

rtiddsmag generates the following code:

HelloWorldAppgen.c

```

const char *const
HelloWorldAppLibrary_HelloWorldDPDESubDP_HelloWorldDPDESub_HelloWorldDPDEDR_transport_enabled_
transports[2] =
{
    "udp1://",
    "udp1://127.0.0.1"
};

```

HelloWorldAppgen.h

```

extern const char *const
HelloWorldAppLibrary_HelloWorldDPDESubDP_HelloWorldDPDESub_HelloWorldDPDEDR_transport_enabled_
transports[2];
#define RTI_APP_GEN___DR_QOS_HelloWorldAppLibrary_HelloWorldDPDESubDP_HelloWorldDPDESub_
HelloWorldDPDEDR \
{ \
    DDS_DEADLINE_QOS_POLICY_DEFAULT, \
    DDS_LIVELINESS_QOS_POLICY_DEFAULT, \
    { /* history */ \
        DDS_KEEP_LAST_HISTORY_QOS, /* kind */ \

```

```

    32L /* depth */ \
}, \
{ /* resource_limits */ \
    64L, /* max_samples */ \
    2L, /* max_instances */ \
    32L /* max_samples_per_instance */ \
}, \
DDS_OWNERSHIP_QOS_POLICY_DEFAULT, \
DDS_LATENCY_BUDGET_QOS_POLICY_DEFAULT, \
{ /* reliability */ \
    DDS_RELIABLE_RELIABILITY_QOS, /* kind */ \
    { /* max_blocking_time */ \
        0L, /* sec */ \
        0L /* nanosec */ \
    } \
}, \
DDS_DURABILITY_QOS_POLICY_DEFAULT, \
DDS_DESTINATION_ORDER_QOS_POLICY_DEFAULT, \
DDS_TRANSPORT_ENCAPSULATION_QOS_POLICY_DEFAULT, \
DDS_DATA_REPRESENTATION_QOS_POLICY_DEFAULT, \
DDS_TYPESUPPORT_QOS_POLICY_DEFAULT, \
DDS_DATA_READER_PROTOCOL_QOS_POLICY_DEFAULT, \
{ /* transports */ \
    REDA_StringSeq_INITIALIZER_W_LOAN(HelloWorldAppLibrary>HelloWorldDPDESubDP_
HelloWorldDPDESub>HelloWorldDPDEDR_transport_enabled_transports, 2, 2) /* enabled_transports */
\
}, \
{ /* reader_resource_limits */ \
    10L, /* max_remote_writers */ \
    10L, /* max_remote_writers_per_instance */ \
    1L, /* max_samples_per_remote_writer */ \
    1L, /* max_outstanding_reads */ \
    DDS_NO_INSTANCE_REPLACEMENT_QOS, /* instance_replacement */ \
    4L, /* max_routes_per_writer */ \
    DDS_MAX_AUTO, /* max_fragmented_samples */ \
    DDS_MAX_AUTO, /* max_fragmented_samples_per_remote_writer */ \
    DDS_SIZE_AUTO /* shm_ref_transfer_mode_attached_segment_allocation */ \
}, \
RTI_MANAGEMENT_QOS_POLICY_DEFAULT, \
DDS_DATAREADERQOS_TRUST_INITIALIZER \
DDS_DATAREADERQOS_APPGEN_INITIALIZER \
NULL \
}

```

6.4.5 Transport and Discovery Configuration

rtiddsmag creates the code necessary to configure each one of the available transports used by *Connex DDS Micro* (UDP and SHMEM) and the discovery mechanism (Dynamic and Static discovery). It also generates the name automatically for each component regardless of if it is a transport or discovery; for this *rtiddsmag* will add a *DomainParticipant* number at the end of its name, only if that configuration is not used by any other *DomainParticipant*:

- UDP Transport: **udp** + participant_number.
- SHMEM Transport: **shmem** + participant_number.
- DPDE: **dpde** + participant_number.
- DPSE: **dpse** + participant_number.

These names can be changed by using the **...Names** options described in [6.2 Command-Line Options on page 55](#).

Notes:

- *rtiddsmag* will only create the transport configuration based on the strongly typed XML elements in the schema. *rtiddsmag* **will not** use the values in the property tag to configure the transport.
- If the length of one of these names exceeds the maximum length, *rtiddsmag* will throw an error.

The following configuration specifies dynamic discovery:

```
<domain_participant_qos>
  <discovery_config>
    <builtin_discovery_plugins>SDP</builtin_discovery_plugins>
  </discovery_config>
</domain_participant_qos>
```

HelloWorldAppgen.h

```
#define RTI_APP_GEN__dpde__HelloWorldAppLibrary_HelloWorldDPDEPubDP_dpde1 \
{ \
  RT_ComponentFactoryProperty_INITIALIZER, /* _parent */ \
  { /*participant_liveliness_assert_period */ \
    30L, /* sec */ \
    0L /* nanosec */ \
  }, \
  { /*participant_liveliness_lease_duration */ \
    100L, /* sec */ \
    0L /* nanosec */ \
  }, \
  5, /* initial_participant_announcements */ \
  { /*initial_participant_announcement_period */ \
    1L, /* sec */ \
    0L /* nanosec */ \
  }, \
  DDS_BOOLEAN_FALSE, /* cache_serialized_samples */ \
  DDS_LENGTH_AUTO, /* max_participant_locators */ \
  4, /* max_locators_per_discovered_participant */ \
  8, /* max_samples_per_builtin_endpoint_reader */ \
  DDS_LENGTH_UNLIMITED, /* builtin_writer_max_heartbeat_retries */ \
  { /*builtin_writer_heartbeat_period */ \
    0L, /* sec */ \
    100000000L /* nanosec */ \
  }
```

```

    }, \
    1L /* builtin_writer_heartbeats_per_max_samples */ \
    DDS_PARTICIPANT_MESSAGE_READER_RELIABILITY_KIND_INITIALIZER \
}

#define RTI_APP_GEN___DP_QOS>HelloWorldAppLibrary>HelloWorldDPDEPubDP \
{ \
    ...
    { /* discovery */ \
        REDA_StringSeq_INITIALIZER_W_LOAN>HelloWorldAppLibrary>HelloWorldDPDEPubDP_initial_
peers, 2, 2), /* initial_peers */ \
        REDA_StringSeq_INITIALIZER_W_LOAN>HelloWorldAppLibrary>HelloWorldDPDEPubDP_discovery_
enabled_transports, 3, 3), /* enabled_transports */ \
        { \
            { { "dpdel" } }, /* RT_ComponentFactoryId_INITIALIZER */ \
            NDDS_Discovery_Property_INITIALIZER \
        }, /* discovery_component */ \
        DDS_BOOLEAN_FALSE /* accept_unknown_peers */ \
    }, \
    ...
}

```

Notes:

- *rtiddsmag* will throw an error if the list of available transports for the *DomainParticipant*, *DataWriter*, and *DataReader* contains a transport alias that is not part of the **transport_builtin** mask.
- *rtiddsmag* will not generate code for the SHMEM or UDPv4 transport if it is not specified in the **transport_builtin** mask.
- UDP transformation is not supported in XML.

When using the transport alias to specify the **enabled_transports** for the discovery *DomainParticipant*, *DataWriter* or *DataReader*, you could use the transport names for the built-in transport plugins: **shmem** and **udpv4**. *rtiddsmag* will automatically modify this alias to match the new one with the *DomainParticipant* number at the end of the name.

6.4.6 Flow Controllers

rtiddsmag creates code which it will be used by *Connex DDS Micro* to create a flow controller. The flow controller is configured through properties in the XML file. Let's see an example of how to configure a flow controller named **custom_flowcontroller** and the code that *rtiddsmag* generates:

```

<domain_participant_qos>
    ...
    <property>
        <value>
            <element>
                <name>
                    dds.flow_controller.token_bucket.custom_flowcontroller.token_bucket.max_tokens

```

```

        </name>
        <value>2</value>
    </element>
    <element>
        <name>
dds.flow_controller.token_bucket.custom_flowcontroller.token_bucket.tokens_added_per_period
        </name>
        <value>2</value>
    </element>
    <element>
        <name>
dds.flow_controller.token_bucket.custom_flowcontroller.token_bucket.tokens_leaked_per_period
        </name>
        <!-- The value -1 means LENGTH_UNLIMITED -->
        <value>-1</value>
    </element>
    <element>
        <name>
dds.flow_controller.token_bucket.custom_flowcontroller.token_bucket.period.sec
        </name>
        <value>0</value>
    </element>
    <element>
        <name>
dds.flow_controller.token_bucket.custom_flowcontroller.token_bucket.period.nanosec
        </name>
        <value>100000000</value>
    </element>
    <element>
        <name>
dds.flow_controller.token_bucket.custom_flowcontroller.token_bucket.bytes_per_token
        </name>
        <value>1024</value>
    </element>
</value>
</property>
</domain_participant_qos>

<datawriter_qos>
    <publish_mode>
        <flow_controller_name>
            dds.flow_controller.token_bucket.custom_flowcontroller
        </flow_controller_name>
        <kind>ASYNCHRONOUS_PUBLISH_MODE_QOS</kind>
        <priority>12</priority>
    </publish_mode>
</datawriter_qos>

```

HelloWorldAppgen.c

```

const struct APPGEN_FlowControllerModel
HelloWorldAppLibrary>HelloWorldDPDEPubDP_flow_controllers[1] =
{
    {

```

```

        "custom_flowcontroller", /* name */
        RTI_APP_GEN__FC_P_QOS>HelloWorldAppLibrary>HelloWorldDPDEPubDP_custom_flowcontroller
/* flow_controller_property */
    }
};

```

HelloWorldAppgen.h

```

#define
RTI_APP_GEN__FC_P_QOS>HelloWorldAppLibrary>HelloWorldDPDEPubDP_custom_flowcontroller \
{ \
    NETIO_FlowControllerProperty_INITIALIZER, \
    DDS_EDF_FLOW_CONTROLLER_SCHED_POLICY, /* scheduling_policy */ \
    { /* token_bucket */ \
        2L, /* max_tokens */ \
        2L, /* tokens_added_per_period */ \
        -1L, /* tokens_leaked_per_period */ \
        { /* period */ \
            0L, /* sec */ \
            100000000L /* nanosec */ \
        }, \
        1024L /* bytes_per_token */ \
    }, \
    DDS_BOOLEAN_FALSE /* is_vendor_specific */ \
}

#define
RTI_APP_GEN__DW_QOS>HelloWorldAppLibrary>HelloWorldDPDEPubDP>HelloWorldDPDEPub_
>HelloWorldDPDEDW \
{ \
    ...
    { /* publish_mode */ \
        DDS_ASYNCHRONOUS_PUBLISH_MODE_QOS, /* max_remote_readers */ \
        "custom_flowcontroller", /* flow_controller_name */ \
        12L /* priority */ \
    }, \
    ...
}

extern const struct APPGEN_FlowControllerModel
>HelloWorldAppLibrary>HelloWorldDPDEPubDP_flow_controllers[1];

#define RTI_APP_GEN__DP>HelloWorldAppLibrary>HelloWorldDPDEPubDP \
{ \
    ...
    1UL, /* flow_controller_count */ \
   >HelloWorldAppLibrary>HelloWorldDPDEPubDP_flow_controllers /* flow_controllers */ \
}

```

6.4.7 Static Discovery

rtiddsmag iterates through each *DomainParticipant* definition in the XML configuration file, creating the remote entities that are needed to communicate with applications that use static discovery, and updating the

object_id of each *DataWriter* or *DataReader* involved if they don't have a valid value or they are using the default value.

Let's see an example of two applications that use static discovery and how *rtiddsmag* generates the necessary code that will be asserted by *Connex DDS Micro* to communicate with both applications:

```
<domain_participant name="HelloWorldDPSEPubDP"
  domain_ref="HelloWorldLibrary::HelloWorldDomain">
  <publisher name="HelloWorldDPSEPub">
    <data_writer topic_ref="HelloWorldTopic" name="HelloWorldDPSEDW">
      <datawriter_qos base_name="QosLibrary::DPSEProfile"/>
    </data_writer>
  </publisher>
  <domain_participant_qos base_name="QosLibrary::DPSEProfile"/>
</domain_participant>

<domain_participant name="HelloWorldDPSESubDP"
  domain_ref="HelloWorldLibrary::HelloWorldDomain">
  <subscriber name="HelloWorldDPSESub">
    <data_reader topic_ref="HelloWorldTopic" name="HelloWorldDPSEDR">
      <datareader_qos base_name="QosLibrary::DPSEProfile"/>
    </data_reader>
  </subscriber>
  <domain_participant_qos base_name="QosLibrary::DPSEProfile"/>
</domain_participant>
```

For these two *DomainParticipants*, *rtiddsmag* will update the **rtps_object_id** for the *DataWriter* and *DataReader*, since they didn't have any values set in the XML file. You can see this in the following snippet from **HelloWorldAppgen.h**:

```
#define
RTI_APP_GEN__DW_QOS_HelloWorldAppLibrary_HelloWorldDPSEPubDP_HelloWorldDPSEPub_
HelloWorldDPSEDW \
{ \
  ...
  { /* protocol */ \
    1UL, /* rtps_object_id */ \
    { /* rtps_reliable_writer */ \
      { /* heartbeat_period */ \
        0L, /* sec */ \
        250000000UL /* nanosec */ \
      }, \
      1L, /* heartbeats_per_max_samples */ \
      DDS_LENGTH_UNLIMITED, /* max_send_window */ \
      DDS_LENGTH_UNLIMITED, /* max_heartbeat_retries */ \
      { /* first_write_sequence_number */ \
        0, /* high */ \
        1 /* low */ \
      } \
    }, \
    DDS_BOOLEAN_TRUE /* serialize_on_write */ \
  }, \
  ...
```



```

}

#define
RTI_APP_GEN__DR_QOS>HelloWorldAppLibrary>HelloWorldDPSESubDP>HelloWorldDPSESub_
>HelloWorldDPSEDR \
{ \
    ...
    { /* protocol */ \
        2UL /* rtps_object_id */ \
    }, \
    ...
}

```

riddsmag will also generate the remote *DomainParticipants*, *DataWriters*, and *DataReaders* that need to be asserted in order for endpoints to match:

HelloWorldAppgen.c

```

const struct APPGEN_RemoteSubscriptionModel
>HelloWorldAppLibrary>HelloWorldDPSEPubDP_remote_subscribers[1] =
{
    RTI_APP_GEN__RSD>HelloWorldAppLibrary>HelloWorldDPSEPubDP>HelloWorldAppLibrary_
>HelloWorldDPSESubDP>HelloWorldDPSESub>HelloWorldDPSEDR
};

const struct APPGEN_RemoteParticipantModel
>HelloWorldAppLibrary>HelloWorldDPSEPubDP_remote_participants[1] =
{
    {
        "HelloWorldDPSESubDP", /* name */
        0UL, /* remote_publisher_count */
        NULL, /* remote_publishers */
        1UL, /* remote_subscriber_count */
>HelloWorldAppLibrary>HelloWorldDPSEPubDP_remote_subscribers /* remote_subscribers */
    }
};

const struct APPGEN_RemotePublicationModel
>HelloWorldAppLibrary>HelloWorldDPSESubDP_remote_publishers[1] =
{
    RTI_APP_GEN__RPD>HelloWorldAppLibrary>HelloWorldDPSESubDP>HelloWorldAppLibrary_
>HelloWorldDPSEPubDP>HelloWorldDPSEPub>HelloWorldDPSEDW
};

const struct APPGEN_RemoteParticipantModel
>HelloWorldAppLibrary>HelloWorldDPSESubDP_remote_participants[1] =
{
    {
        "HelloWorldDPSEPubDP", /* name */
        1UL, /* remote_publisher_count */
>HelloWorldAppLibrary>HelloWorldDPSESubDP_remote_publishers, /* remote_publishers */
        0UL, /* remote_subscriber_count */
        NULL /* remote_subscribers */
    }
}

```

};

HelloWorldAppgen.h

```

#define RTI_APP_GEN__RSD>HelloWorldAppLibrary>HelloWorldDPSEPubDP>HelloWorldAppLibrary_
>HelloWorldDPSESubDP>HelloWorldDPSESub>HelloWorldDPSEDR \
{ \
    { /* subscription_data */ \
        { \
            { 0, 0, 0, 2 } /* key */ \
        }, \
        { \
            { 0, 0, 0, 0 } /* participant_key */ \
        }, \
        "HelloWorldTopic", /* topic_name */ \
        "HelloWorldType", /* type_name */ \
        DDS_DEADLINE_QOS_POLICY_DEFAULT, \
        DDS_OWNERSHIP_QOS_POLICY_DEFAULT, \
        DDS_LATENCY_BUDGET_QOS_POLICY_DEFAULT, \
        { /* reliability */ \
            DDS_RELIABLE_RELIABILITY_QOS, /* kind */ \
            { /* max_blocking_time */ \
                0L, /* sec */ \
                0L /* nanosec */ \
            } \
        }, \
        DDS_LIVELINESS_QOS_POLICY_DEFAULT, \
        DDS_DURABILITY_QOS_POLICY_DEFAULT, \
        DDS_DESTINATION_ORDER_QOS_POLICY_DEFAULT, \
        DDS_SEQUENCE_INITIALIZER, \
        DDS_SEQUENCE_INITIALIZER, \
        DDS_DATA_REPRESENTATION_QOS_POLICY_DEFAULT \
        DDS_TRUST_SUBSCRIPTION_DATA_INITIALIZER \
    }, \
    HelloWorldTypePlugin_get /* get_type_plugin */ \
}
extern const struct APPGEN_RemoteSubscriptionModel>HelloWorldAppLibrary>HelloWorldDPSEPubDP_
remote_subscribers[1];
extern const struct APPGEN_RemoteParticipantModel>HelloWorldAppLibrary>HelloWorldDPSEPubDP_
remote_participants[1];

#define RTI_APP_GEN__DP>HelloWorldAppLibrary>HelloWorldDPSEPubDP \
{ \
    "HelloWorldDPSEPubDP", /* name */ \
    RTI_APP_GEN__DPF>HelloWorldAppLibrary>HelloWorldDPSEPubDP, /* domain_participant_factory */
\
    RTI_APP_GEN__DP_QOS>HelloWorldAppLibrary>HelloWorldDPSEPubDP, /* domain_participant_qos */
\
    0L, /* domain_id */ \
    1UL, /* type_registration_count */ \
   >HelloWorldAppLibrary>HelloWorldDPSEPubDP_type_registrations, /* type_registrations */ \
    1UL, /* topic_count */ \
   >HelloWorldAppLibrary>HelloWorldDPSEPubDP_topics, /* topics */ \
    1UL, /* publisher_count */ \
}

```

```

HelloWorldAppLibrary_HelloWorldDPSEPubDP_publishers, /* publishers */ \
OUL, /* subscriber_count */ \
NULL, /* subscribers */ \
1UL, /* remote_participant_count */ \
HelloWorldAppLibrary_HelloWorldDPSEPubDP_remote_participants /* remote_participants */ \
OUL, /* flow_controller_count */ \
NULL, /* flow_controllers */ \
}

#define RTI_APP_GEN_RPD_HelloWorldAppLibrary_HelloWorldDPSESubDP_HelloWorldAppLibrary_
HelloWorldDPSEPubDP_HelloWorldDPSEPub_HelloWorldDPSEDW \
{ \
    { /* publication_data */ \
        { \
            { 0, 0, 0, 1 } /* key */ \
        }, \
        { \
            { 0, 0, 0, 0 } /* participant_key */ \
        }, \
        "HelloWorldTopic", /* topic_name */ \
        "HelloWorldType", /* type_name */ \
        DDS_DEADLINE_QOS_POLICY_DEFAULT, \
        DDS_OWNERSHIP_QOS_POLICY_DEFAULT, \
        DDS_OWNERSHIP_STRENGTH_QOS_POLICY_DEFAULT, \
        DDS_LATENCY_BUDGET_QOS_POLICY_DEFAULT, \
        { /* reliability */ \
            DDS_RELIABLE_RELIABILITY_QOS, /* kind */ \
            { /* max_blocking_time */ \
                0L, /* sec */ \
                100000000L /* nanosec */ \
            } \
        }, \
        DDS_LIVELINESS_QOS_POLICY_DEFAULT, \
        DDS_DURABILITY_QOS_POLICY_DEFAULT, \
        DDS_DESTINATION_ORDER_QOS_POLICY_DEFAULT, \
        DDS_SEQUENCE_INITIALIZER, \
        DDS_DATA_REPRESENTATION_QOS_POLICY_DEFAULT \
        DDS_TRUST_PUBLICATION_DATA_INITIALIZER \
    }, \
    HelloWorldTypePlugin_get /* get_type_plugin */ \
}

extern const struct APPGEN_RemotePublicationModel HelloWorldAppLibrary_HelloWorldDPSESubDP_
remote_publishers[1];
extern const struct APPGEN_RemoteParticipantModel HelloWorldAppLibrary_HelloWorldDPSESubDP_
remote_participants[1];

#define RTI_APP_GEN_DP_HelloWorldAppLibrary_HelloWorldDPSESubDP \
{ \
    "HelloWorldDPSESubDP", /* name */ \
    RTI_APP_GEN_DPF_HelloWorldAppLibrary_HelloWorldDPSESubDP, /* domain_participant_factory */ \
    \
    RTI_APP_GEN_DP_QOS_HelloWorldAppLibrary_HelloWorldDPSESubDP, /* domain_participant_qos */ \
    \
}

```

```

0L, /* domain_id */ \
1UL, /* type_registration_count */ \
HelloWorldAppLibrary_HelloWorldDPSESubDP_type_registrations, /* type_registrations */ \
1UL, /* topic_count */ \
HelloWorldAppLibrary_HelloWorldDPSESubDP_topics, /* topics */ \
0UL, /* publisher_count */ \
NULL, /* publishers */ \
1UL, /* subscriber_count */ \
HelloWorldAppLibrary_HelloWorldDPSESubDP_subscribers, /* subscribers */ \
1UL, /* remote_participant_count */ \
HelloWorldAppLibrary_HelloWorldDPSESubDP_remote_participants /* remote_participants */ \
0UL, /* flow_controller_count */ \
NULL /* flow_controllers */ \
}

```

6.4.8 RTI Security Plugins

Note: The functionality described in this section is currently not supported.

rtiddsmag creates the code necessary to enable and configure *RTI Security Plugins*. It also automatically generates the name for each different security configuration found in the input XML file. For this, *rtiddsmag* will add a *DomainParticipant* number at the end of its name, only if that configuration is not used by any other *DomainParticipant*:

- RTI Security Plugin: "sec" + participant_number

This name can be changed by using the `-securityName <name>` option described in [6.2 Command-Line Options on page 55](#).

Notes:

- *rtiddsmag* will only create the security configuration if all the required properties are configured and used by at least one *DomainParticipant* in the input XML file. See the properties marked as Required in the [table *DDS Security Properties for Configuring Authentication in the Connex DDS Micro User's Manual*](#).
- If the length of the security plugin name exceeds the maximum length, *rtiddsmag* will report an error.

The following configuration specifies security:

```

<domain_participant_qos>
  <property>
    <value>
      <element>
        <name>dds.sec.auth.identity_ca</name>
        <value>file:../../../../dds_security/cert/cacertECdsa.pem</value>
      </element>
    </value>
  </property>
</domain_participant_qos>

```

```

    <element>
      <name>dds.sec.auth.identity_certificate</name>
      <value>file:../../../../dds_security/cert/peer1ECdsa.pem</value>
    </element>
    <element>
      <name>dds.sec.auth.private_key</name>
      <value>file:../../../../dds_security/cert/peer1keyECdsa.pem</value>
    </element>
    <element>
      <name>dds.sec.access.permissions_ca</name>
      <value>file:../../../../dds_security/cert/cacertECdsa.pem</value>
    </element>
    <element>
      <name>dds.sec.access.governance</name>
      <value>
        file:../../../../dds_security/xml/signed/signed_Governance.p7s
      </value>
    </element>
    <element>
      <name>dds.sec.access.permissions</name>
      <value>
        file:../../../../dds_security/xml/signed/signed_PermissionsA.p7s
      </value>
    </element>
  </value>
</property>
</domain_participant_qos>

```

HelloWorldAppgen.h

```

extern const struct DDS_Property HelloWorldAppLibrary_HelloWorldDPDEPubDP_properties[6];
#define RTI_APP_GEN__DP_QOS_HelloWorldAppLibrary_HelloWorldDPDEPubDP \
{ \
  ...
  DDS_USERTRAFFIC_QOS_POLICY_DEFAULT, \
  { \
    { { "secl" } }, /* suite */ \
    RT_ComponentFactoryId_INITIALIZER, /* authentication */ \
    RT_ComponentFactoryId_INITIALIZER, /* access_control */ \
    RT_ComponentFactoryId_INITIALIZER, /* logging */ \
    RT_ComponentFactoryId_INITIALIZER /* interceptor */ \
  }, \
  { /* property */ \
DDS_PropertySeq_INITIALIZER_W_LOAN(HelloWorldAppLibrary_HelloWorldDPDEPubDP_properties, 6, 6) \
  } \
}

```

HelloWorldAppgen.c

```

const struct DDS_Property HelloWorldAppLibrary_HelloWorldDPDEPubDP_properties[6] =
{
    {
        "dds.sec.auth.identity_ca", /* name */
        "file:../../../../dds_security/cert/cacertECdsa.pem", /* value */
        DDS_BOOLEAN_TRUE /* propagate */
    },
    {
        "dds.sec.auth.identity_certificate", /* name */
        "file:../../../../dds_security/cert/peer1ECdsa.pem", /* value */
        DDS_BOOLEAN_TRUE /* propagate */
    },
    {
        "dds.sec.auth.private_key", /* name */
        "file:../../../../dds_security/cert/peer1keyECdsa.pem", /* value */
        DDS_BOOLEAN_TRUE /* propagate */
    },
    {
        "dds.sec.access.permissions_ca", /* name */
        "file:../../../../dds_security/cert/cacertECdsa.pem", /* value */
        DDS_BOOLEAN_TRUE /* propagate */
    },
    {
        "dds.sec.access.governance", /* name */
        "file:../../../../dds_security/xml/signed/signed_Governance.p7s", /* value */
        DDS_BOOLEAN_TRUE /* propagate */
    },
    {
        "dds.sec.access.permissions", /* name */
        "file:../../../../dds_security/xml/signed/signed_PermissionsA.p7s", /* value */
        DDS_BOOLEAN_TRUE /* propagate */
    }
};

```

6.5 Using Environment Variables in XML

Note: Using environment variables in XML is currently not supported by MAG.

The text in an XML tag and attribute can refer to an environment variable. To do so, use the following notation:

```
$(MY_VARIABLE)
```

For example:

```

<element attr="The attribute is $(MY_ATTRIBUTE)">
  <name>The name is $(MY_NAME)</name>
  <value>The value is $(MY_VALUE)</value>
</element>

```

When MAG parses the above tags, it will replace the references to environment variables with their actual values.

6.6 Errors Caused by Invalid Configurations

This section explains the different results thrown by MAG if it receives invalid configuration files.

- **Invalid XML content**

MAG will fail to validate the configuration file if it contains invalid content, such as elements/attributes that don't exist in the schema or values that aren't supported by any of the existing types. For example:

```
<dds>
  ...
  <!-- Participant Library -->
  <domain_participant_library name="FeatureTestLibrary">
    <domain_participant name="01_EmptyDomainParticipant"
      domain_ref="HelloWorldLibrary::HelloWorldDomain">
      <invalid_tag></invalid_tag>
    </domain_participant>
  </domain_participant_library>
  ...
</dds>
```

```
07:41:48.334 [main] INFO com.rti.micro.appgen.MicroAppGen - Processing file : /
home/test/Error.xml
07:41:49.827 [main] ERROR com.rti.micro.appgen.MicroAppGen - Failed to parse inp
ut file : /home/test/Error.xml
07:41:49.837 [main] ERROR com.rti.micro.appgen.MicroAppGen - cvc-complex-type.2.
4.a: Invalid content was found starting with element 'invalid_tag'. One of '{dat
a_writer, publisher_qos}' is expected.
07:41:49.837 [main] INFO com.rti.micro.appgen.MicroAppGen - Exiting.
```

- **Unsupported elements**

MAG will throw a warning for any elements that are not supported by *Connex DDS Micro*. Unsupported elements will be ignored, such as the `user_data` in the following:

```
<dds>
  ...
  <!-- Participant Library -->
  <domain_participant_library name="FeatureTestLibrary">
    <domain_participant name="01_EmptyDomainParticipant"
      domain_ref="HelloWorldLibrary::HelloWorldDomain">
      <domain_participant_qos>
        <!-- user_data is not supported by Micro -->
        <user_data/>
      </domain_participant_qos>
    </domain_participant>
  </domain_participant_library>
  ...
</dds>
```

```

    </domain_participant_library>
</dds>

```

```

07:39:52.643 [main] INFO com.rti.micro.appgen.MicroAppGen - Processing file : /
home/test/Warning.xml
07:39:53.439 [main] WARN com.rti.micro.appgen.utils.ConverterUtils - userData i
s not supported by Micro, the tool will ignore its value.
file=/home/test/Warning.xml, lineNumber=90, columnNumber=38

```

- **Unsupported values**

MAG will throw an error if it finds a value that is not supported by *Connex DDS Micro*.

```

<dds>
  ...
  <!-- Participant Library -->
  <domain_participant_library name="FeatureTestLibrary">
    <domain_participant name="01_EmptyDomainParticipant"
      domain_ref="HelloWorldLibrary::HelloWorldDomain">
      <publisher name="test">
        <data_writer topic_ref="HelloWorldTopic1" name="testW">
          <datawriter_qos>
            <durability>
              <!-- transient is not supported by Micro -->
              <kind>TRANSIENT_DURABILITY_QOS</kind>
            </durability>
          </datawriter_qos>
        </data_writer>
      </publisher>
    </domain_participant>
  </domain_participant_library>
</dds>

```

```

07:39:01.248 [main] INFO com.rti.micro.appgen.MicroAppGen - Processing file : /
home/test/Error.xml
07:39:02.069 [main] ERROR com.rti.micro.appgen.utils.ConverterUtils - TRANSIENT_
DURABILITY_QOS is not supported by Micro, only VOLATILE and TRANSIENT_LOCAL are
valid values for the durability kind field.
file=/home/test/Error.xml, lineNumber=35, columnNumber=37
07:39:02.072 [main] ERROR com.rti.micro.appgen.MicroAppGen - Failed to add input
file information into the model.
07:39:02.074 [main] INFO com.rti.micro.appgen.MicroAppGen - Exiting.

```

MAG will also throw an error if the QoS values are not consistent with values supported in *Connex DDS Micro*. For example, the following XML contains a deadline period that is too large.

```

<dds>
  ...
  <!-- Participant Library -->
  <domain_participant_library name="FeatureTestLibrary">

```



```

<domain_participant name="01_EmptyDomainParticipant"
  domain_ref="HelloWorldLibrary::HelloWorldDomain">
  <publisher name ="test">
    <data_writer topic_ref="HelloWorldTopic1" name="testW">
      <datawriter_qos>
        <deadline>
          <!-- this deadline exceeds the maximum -->
          <period>
            <sec>123213123</sec>
            <nanosec>12</nanosec>
          </period>
        </deadline>
      </datawriter_qos>
    </data_writer>
  </publisher>
</domain_participant>
</domain_participant_library>
</dds>

```

```

07:43:26.805 [main] INFO com.rti.micro.appgen.MicroAppGen - Processing file : /
home/test/Error.xml
07:43:27.619 [main] ERROR com.rti.micro.appgen.utils.ConverterUtils - The durati
on of deadline.period=3.90706250000000038052 y exceeded the maximum range [1 ns,
1 year]
file=/home/test/Error.xml, lineNumber=35, columnNumber=11
07:43:27.620 [main] ERROR com.rti.micro.appgen.MicroAppGen - Failed to add input
file information into the model.
07:43:27.620 [main] INFO com.rti.micro.appgen.MicroAppGen - Exiting.

```

6.7 Unsupported QoS

Not all the QoS policies supported by *Connex DDS Micro* can be configured in XML. The following QoS policies and settings, and *Connex DDS Micro* features, cannot be configured in XML:

- DDS_PropertyQosPolicy (except to configure Security)
- DDS_TrustQosPolicy
- UDP transformation

See the *Connex DDS Micro* API Reference for more information on the policies. See the *Connex DDS Micro User's Manual* for more information on UDP transformation.